

2009 Funders

Alliance for Sustainable Energy, LLC
American Recovery and Reinvestment Act – EPA
American Recovery and Reinvestment Act – NOAA
American Recovery and Reinvestment Act – New York
The Brookings Institution
Chase Real Estate Insurance & Financial Services
The CollegeBound Network
Commonwealth of Pennsylvania
Duke Energy Foundation
Ecology and Environment, Inc.
Environmental Consulting & Technology, Inc.
Government of Ontario
Government of Québec
Great Lakes Observing System
Great Lakes Protection Fund
Healing Our Waters® - Great Lakes Coalition
Industrial Economics, Inc.
International Joint Commission
The Joyce Foundation
Michigan Department of Environmental Quality
National Fish and Wildlife Foundation
New York Power Authority
National Oceanic and Atmospheric
Administration (NOAA) Coastal Services Center
NOAA National Sea Grant College Program
NOAA Restoration Center
Northeast-Midwest Institute
Public Sector Consultants, Inc.
State of Illinois
State of Indiana
State of Michigan
State of Minnesota
State of New York
State of Ohio
State of Wisconsin
U.S. Army Corps of Engineers
U.S. Department of Agriculture,
Natural Resources Conservation Service
U.S. Department of Energy,
National Renewable Energy Laboratory
U.S. Environmental Protection Agency (U.S. EPA),
Great Lakes National Program Office
U.S. EPA, Office of Solid Waste and Emergency Response
U.S. EPA, Region 5, Air and Radiological Division
U.S. EPA, Region 5, Superfund Division
U.S. Fish and Wildlife Service
We Energies
Wege Foundation
Windustry

2009 Funders

The great majority of Commission programs and projects are pursued in partnership with other agencies and organizations, and benefit from their funding support. A listing of 2009 funders is provided to the right. Thanks to all for their assistance!

Revenues and expenses

The Great Lakes Commission concluded FY 2009 in sound financial condition, with operating revenues of \$4.37 million.

Expenses exceeded revenues by \$239,657, slightly over five percent. This was largely due to higher than anticipated personnel costs under the general fund and higher than expected costs related to Commission-sponsored meetings as well as increases in staff travel.

Overall, the Commission continues to effectively manage its general and restricted funds to achieve the goals and objectives of the organization.

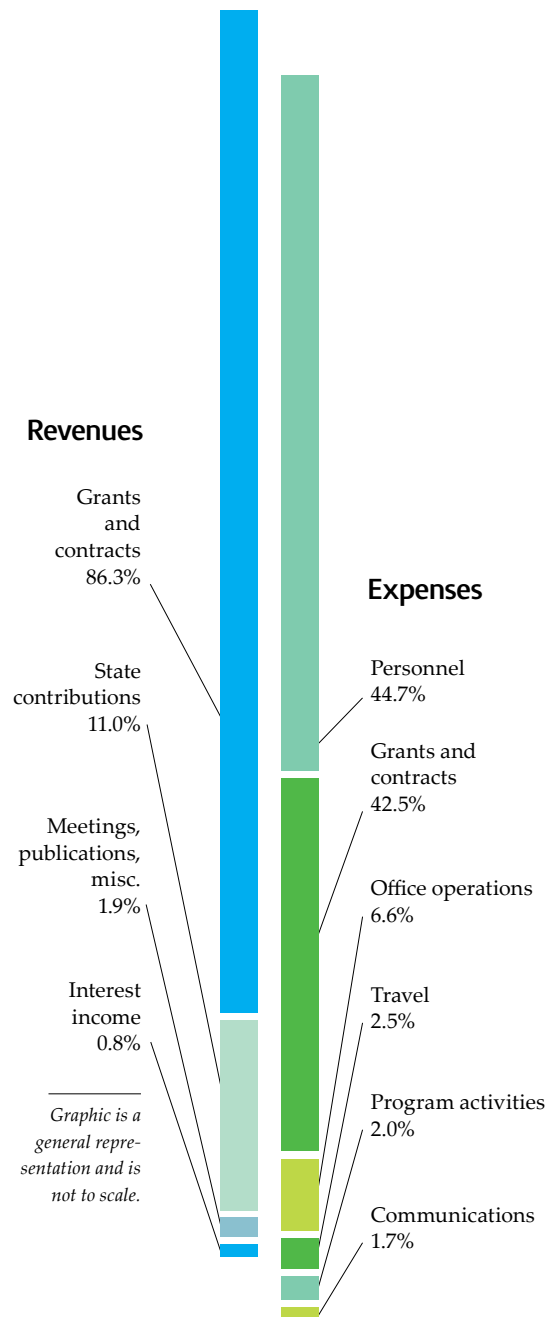
These figures were confirmed by an independent audit, which is conducted each year to examine the Commission's financial operations. The 2009 fiscal year ended June 30, 2009.

Revenues

Grants and contracts	\$ 3,769,993
State contributions	480,000
Meetings, publications, mis.	82,368
Interest income	33,983
Total	\$ 4,366,344

Expenses

Personnel	\$ 2,059,496
Grants and Contracts	1,959,043
Office Operations	304,648
Travel	113,744
Program activities	91,542
Communications	77,528
Total	\$ 4,606,001



Commissioners, Alternates and Observers

Delegation chairs are in **bold**.

ILLINOIS

Gov. Patrick Quinn

Joe Deal, *City of Chicago*
Marc Miller, *Illinois Dept. of Natural Resources*
Steven M. Powell,
United Food and Commercial Workers
Douglas P. Scott, *Gov. Appointee*
Kimberly J. Walz,
Illinois Fifth Congressional District

Alternates

Pat Carey, *City of Chicago*
Gary Clark, *Illinois Dept. of Natural Resources*
Dan Injerd, *Illinois Dept. of Natural Resources*

INDIANA

David Pippen,

Office of the Governor (through 3.2010)

Kari Evans, *Indiana Dept. of
Natural Resources (appointed 3.2010)*

Robert E. Carter, Jr.,
Indiana Dept. of Natural Resources
Thomas W. Easterly, *Indiana*

Dept. of Environmental Management
Ron McAhron,

Indiana Dept. of Natural Resources
Jody W. Peacock, *Ports of Indiana*

MICHIGAN

Ken DeBeaussaert, *Michigan*

Dept. of Natural Resources and Environment

Hon. Patricia Birkholz, *State Senator*
Lt. Gov. John D. Cherry, Jr. (*Immediate Past Chair*)
Hon. Mike Cox, *Attorney General*
Curtis Hertel,
Detroit/Wayne County Port Authority

Alternates

Gary Owen, *Office of the Lieutenant Governor*
Peter Manning, *Dept. of the Attorney General*

MINNESOTA

Hon. Thomas Huntley, *State Representative*

Hon. Bill G. Ingebrigtsen, *State Senator*
Hon. Morrie Lanning, *State Representative*
Ed Oliver, *Gov. Appointee*
Hon. Yvonne Prettner Solon, *State Senator*

Alternates

Dick Lambert,
Minnesota Dept. of Transportation
Cal Larson, *Gov. Appointee*

NEW YORK

Alexander B. Grannis, *New York State*

Dept. of Environmental Conservation
Michael Elmendorf, *Gov. Appointee*
John Francis O'Mara, *Gov. Appointee*
Philip Reed, *Gov. Appointee*

Alternate

Donald Zelazny, *New York State*
Dept. of Environmental Conservation

OHIO

Sean D. Logan,

Ohio Dept. of Natural Resources

Hon. Timothy J. Grendell, *State Senator*
Christopher Korleski,
Ohio Environmental Protection Agency
Hon. Chris Redfern, *State Representative*
James Weakley, *Lake Carriers' Association*

Alternates

John Baker,
International Longshoremen's Association
Ed Hammett, *Ohio Lake Erie Commission*
Cathryn Loucas,
Ohio Dept. of Natural Resources

ONTARIO

William Carr,

Ministry of Intergovernmental Affairs

John Lieou, *Ministry of the Environment*
David O'Toole, *Ministry of Transportation*
Kevin J. Wilson, *Ministry of Natural Resources*

Alternates

Sharon Bailey, *Ministry of the Environment*
Linda McAusland, *Ministry of Transportation*
Ranissah Samah,
Ministry of Intergovernmental Affairs

PENNSYLVANIA

Kelly Burch, *Pennsylvania*

Dept. of Environmental Protection

Robert W. Light, *Pennsylvania Sea Grant*
Pat Lupo, *Lake Erie-Allegheny Earth Force*

Alternates

John Booser, *Pennsylvania*
Dept. of Environmental Protection
Lori Boughton, *Pennsylvania*
Dept. of Environmental Protection
John Hines, *Pennsylvania*
Dept. of Environmental Protection

QUÉBEC

Marc T. Boucher, *Government of Québec*

Pierre Bertrand, *Ministry of Sustainable
Development, Environment and Parks*
Nathalie Camden, *Ministère des
Ressources naturelles et de la Faune*
André Meloche, *Ministry of Transportation*

Alternates

Marcel Bernard, *Ministère des
Ressources naturelles et de la Faune*
Ève Jospeh, *Ministère des Transports du Québec*
Louise Lapierre, *Ministry of Sustainable
Development, Environment and Parks*

WISCONSIN

Todd Amb,

Wisconsin Dept. of Natural Resources

Hon. Dave Hansen, *State Senator*
Fred Schnook, *Foth & Van Dyke and Assoc., Inc.*

Alternate

Nancy Larson,
Wisconsin Dept. of Natural Resources

OBSERVERS

Alliance for the Great Lakes, *Joel Brammeier*
Canadian Embassy, *Christina Jutzi*
Chippewa Ottawa Resource Authority, *Mike Ripley*
Coastal States Organization, *Kristen Fletcher*
Council of Great Lakes Governors, *David Naftzger*
Council of Great Lakes Industries, *George Kuper*
John G. Shedd Aquarium, *Melanie Napoleon*
Great Lakes Fishery Commission,
Christopher Goddard
Great Lakes Sea Grant Network, *Jeff Gunderson*
Great Lakes United, *Jennifer Nalbone*
Helsinki Commission, *Anne Christine Brusendorff*
International Joint Commission, *Dr. Saad Y. Jasim*
Maritime Administration, Great Lakes Region,
Floyd Miras

National Association of Conservation Districts,
Bradley Rogers

National Oceanic and Atmospheric
Administration, Great Lakes Environmental
Research Laboratory, *Marie Colton*

NOAA Office of Ocean and Coastal Resource
Management, *David Kennedy*

National Park Service, *Gary Vequist*
Ninth Coast Guard District, *Radm. Peter Neffenger*
St. Lawrence Seaway Development Corp.,
Terry Johnson, Jr.

U.S. Army Corps of Engineers, *Jan Miller*
U.S. Department of Agriculture, *Garry Lee*
U.S. Department of Energy, *Patrick L. Wilkey*
U.S. Environmental Protection Agency,
Great Lakes National Program Office, *Gary Gulezian*
U.S. Fish & Wildlife Service, *Craig Czarnecki*
U.S. Geological Survey, *Jim Nicholas*
U.S. Geological Survey, *Russell Strach*

CREDITS

Copyright © 2010 Great Lakes Commission
Editor: Dave Knight
Designer: Laura Andrews
Managing Editor: Christine Manninen

Photo credits: page 1 (cover), Pier Cove Beach
on Lake Michigan © Andy Simonds. Page 2,
Pictured Rocks National Lakeshore on Lake
Superior © Kevin Lau. Pages 4-5, Muskegon
photo © Dave Craymer; all others © Great
Lakes Commission. Page 6-7, Asian carp
photo © Jason Lindsey, all others © Great Lakes
Commission. Page 8, Georgian Bay on Lake
Huron © Robert Wallace. Page 11, clockwise
from upper left: sunset on Lake Huron
© John Weise; sailing on Lake Michigan © Ryan
Whisner; mallards on Lake Superior © Randen
Pederson; the M/V *Canadian Transfer* © Robert
Shaw; golfers on Mackinac Island © Andy
Simonds; Humber Bay Park on Lake Ontario
© Andrew O. Page 12 (back cover), Indiana
Dunes National Lakeshore © Tom Gill.

**Printed on 100% recycled paper, 50% post-
consumer waste, processed chlorine free.**



Sunset on Lake Huron.



Sailing on Lake Michigan.



STAFF

Front row (*from left*): Anjali Patel, Hao Zhuang, Erika Jensen, Heather Braun, Kathe Glassner-Shwayder, Rita Straith, Pat Gable, Sarah-Émilie Hebert-Marcoux. Second row: Laura Andrews, Michael Schneider, Vitaliy Peker, Richard Garcia, Tom Crane, Ron Hasselbring, Matt Doss, Stuart Eddy. Third row: Tim Eder, Victoria Pebbles, Laura Kaminski, Christine Manninen, Becky Pearson. Back row: Guan Wang, Dave Knight, John Hummer, Roger Gauthier, Hugh Brennan, Gary Overmier.



A mallard family on Lake Superior.



M/V Canadian Transfer in Hamilton, Ont.



Toronto's Humber Bay Park on Lake Ontario.



Golfers on Mackinac Island enjoy Lake Michigan views.

View of Lake Michigan from Indiana Dunes National Lakeshore near Chesterton, Indiana.

About the Commission

The Great Lakes Commission was established in 1955 with a mandate to “promote the orderly, integrated and comprehensive development, use and conservation of the water resources of the Great Lakes basin.” Founded in state law with U.S. federal consent, with membership consisting of the eight Great Lakes states and associate member status

for the provinces of Ontario and Québec, the Commission pursues four primary functions: communication and education, information integration and reporting, facilitation and consensus building, and policy coordination and advocacy.

Each Member jurisdiction is represented by a delegation consisting of three to five members who are appointees of the respective governor or premier, legislators or senior agency officials. A board of directors, consisting of the chair of each

delegation, is the Commission’s executive body.

In carrying out its initiatives, the Commission works in close cooperation with many partner organizations, including U.S. and Canadian federal agencies, binational institutions, tribal/ First Nation governments and other regional interests. Representatives appointed by partner entities participate extensively in Commission activities through a formal Observer program. The Commission is supported by a professional staff in Ann Arbor, Mich.