

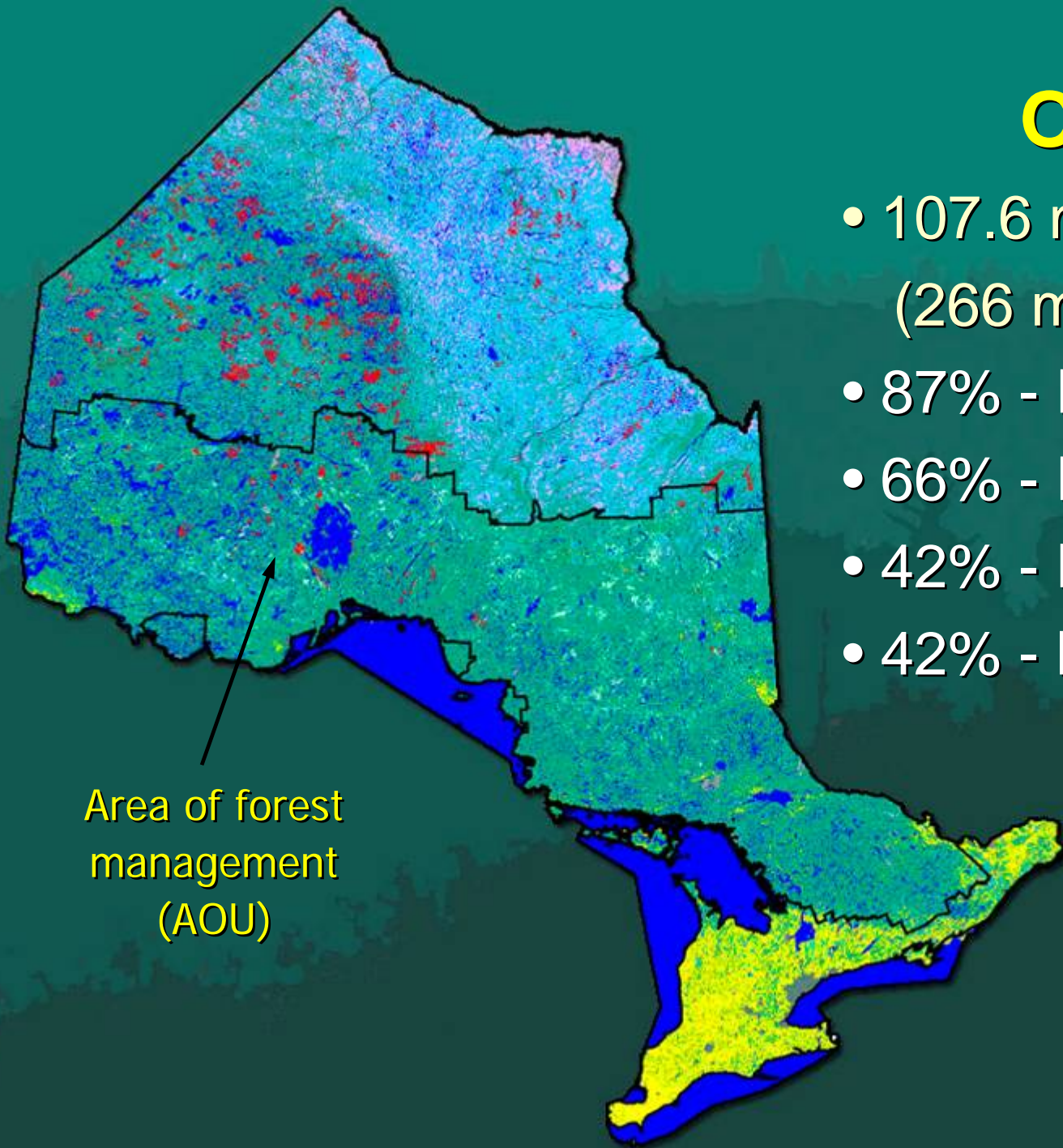
Sustainable Forest Management in Ontario

**Great Lakes Commission
Semiannual Meeting
May 4, 2006**

**Rich Greenwood – Director, Forest Management Branch
Ontario Ministry of Natural Resources**

Ontario

- 107.6 million hectares (266 million acres)
- 87% - Public Land
- 66% - Forested
- 42% - Forest Mgmt
- 42% - Natural State

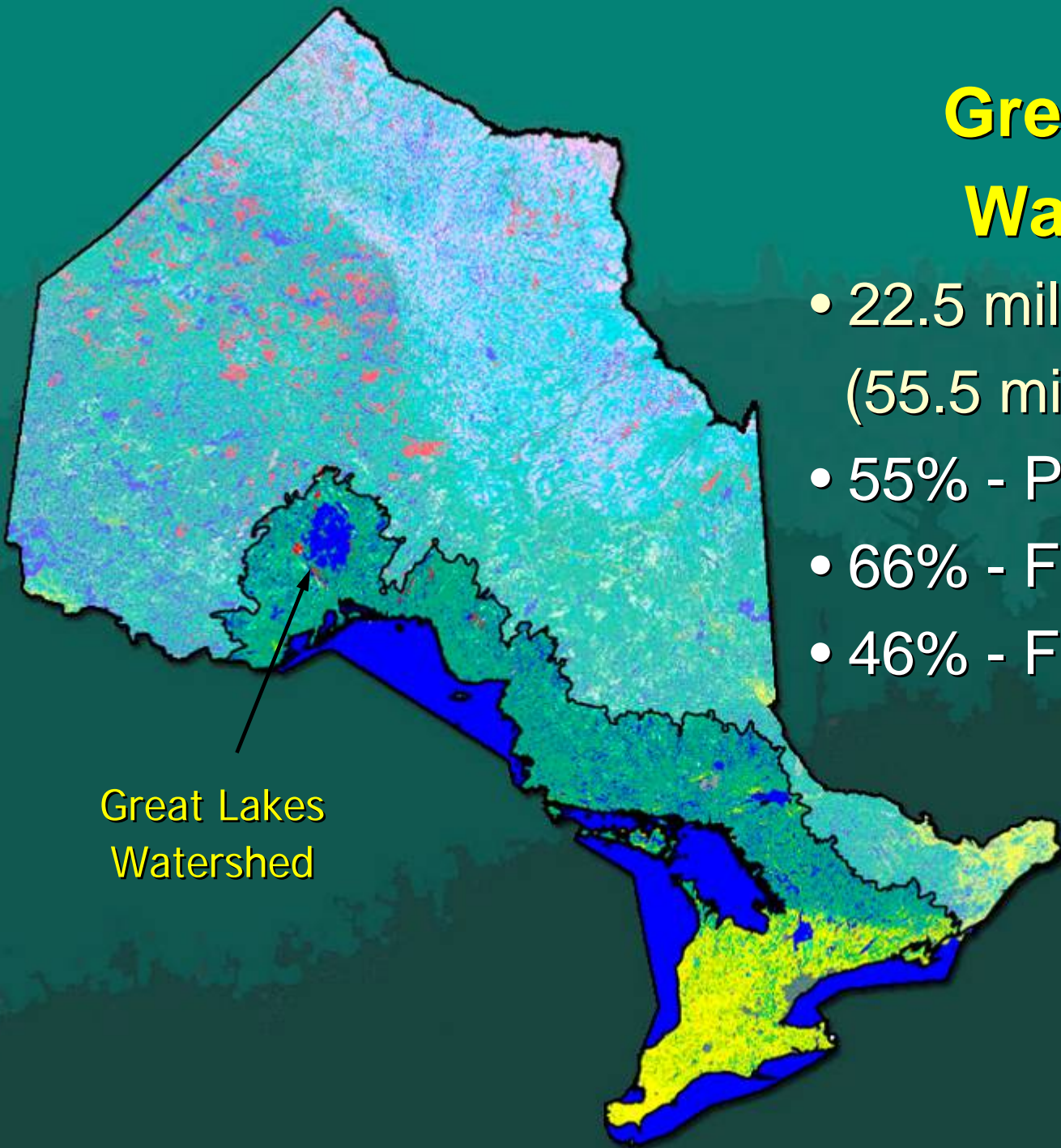


Area of forest management (AOU)

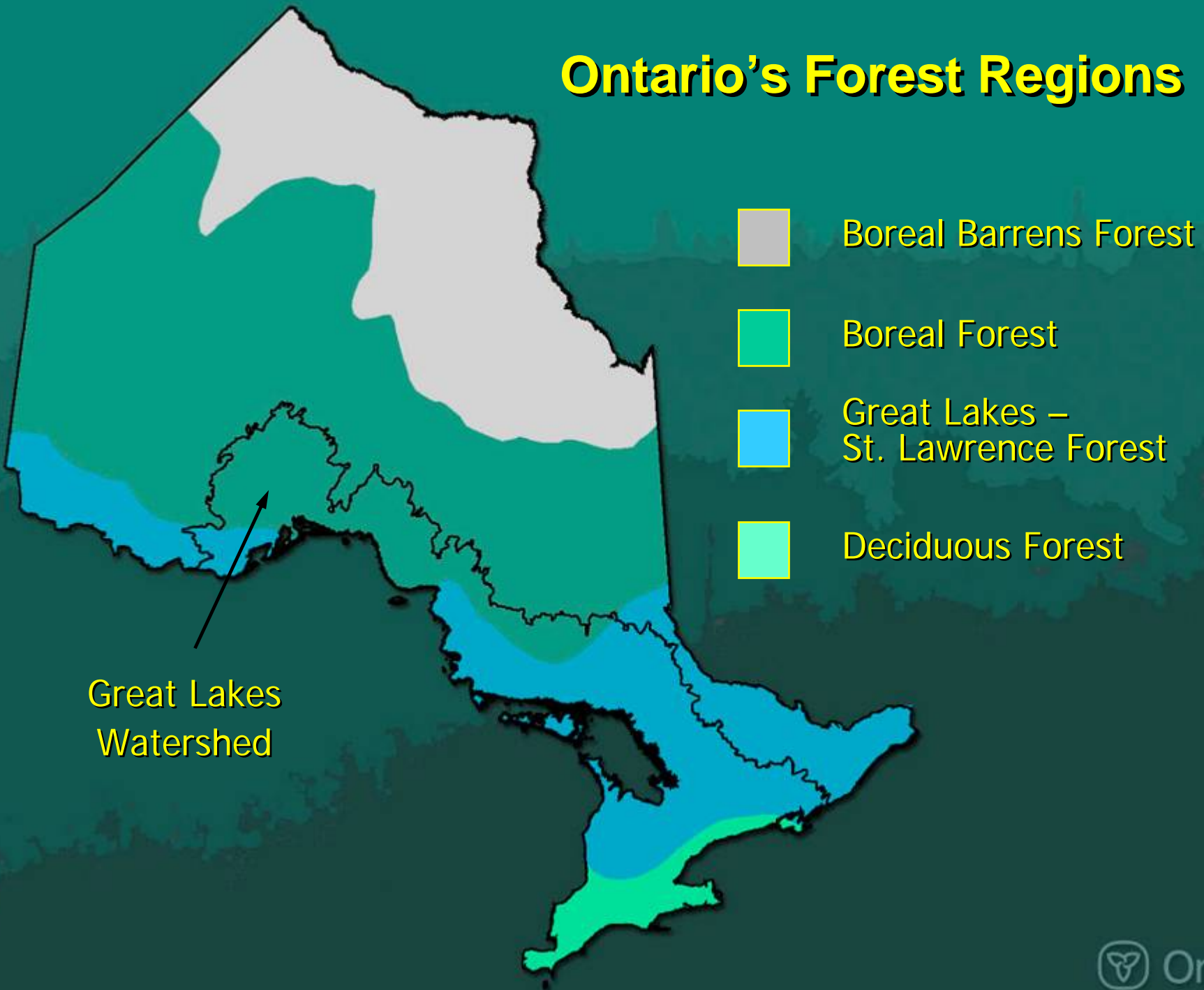
Great Lakes Watershed

- 22.5 million hectares (55.5 million acres)
- 55% - Public Land
- 66% - Forested
- 46% - Forest Mgmt

Great Lakes Watershed



Ontario's Forest Regions



Sustainable Forest Management Framework



- Legislation & Regulations
- Licencing Use
- Planning & Guides
- Monitoring & Evaluation
- Public Reporting
- Sound Science

Legislative Authority Key Acts

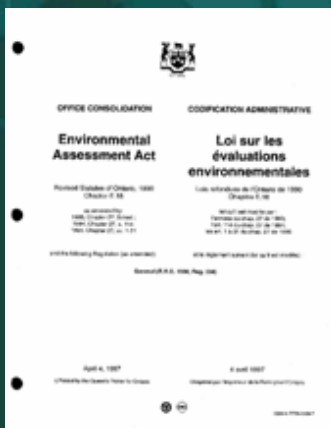
Crown Forest Sustainability Act

- regulates requirement for sustainable management of Crown forests
- binding on Crown and forest industry



Environmental Assessment Act

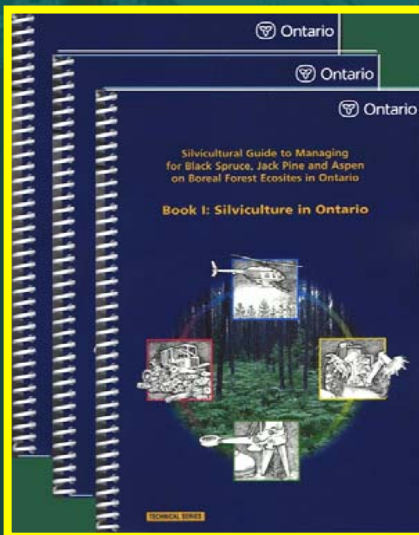
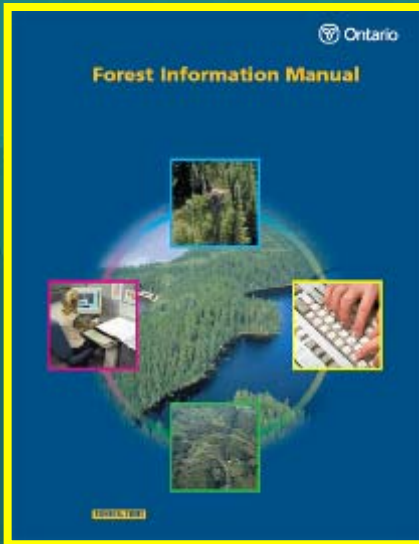
- Timber (1994) & Forest Management (2004) Class EA Approvals



Forestry Act

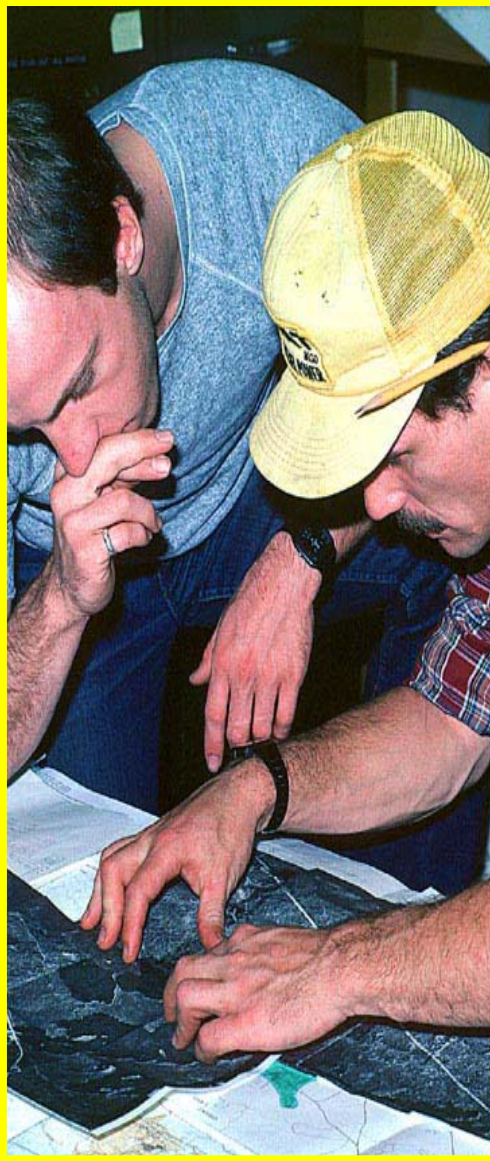
- for agreements and programs on private land

Regulated Manuals



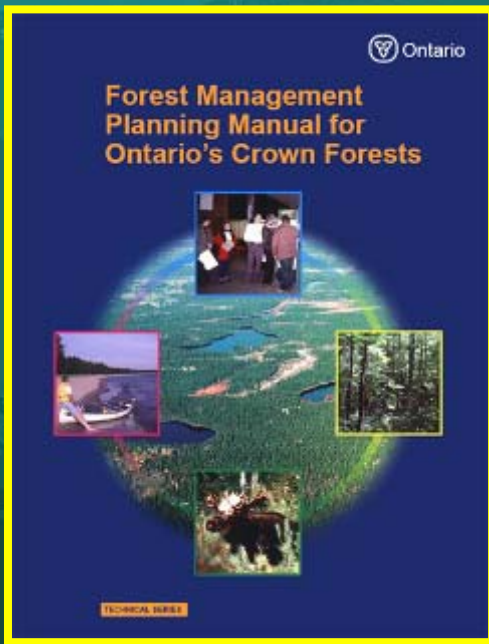
- 4 Regulated Manuals :
- Forest Management Planning
 - Forest Operations and Silviculture (plus specific guidelines)
 - Forest Information
 - Timber Scaling

Licences



- access to public timber gained through Forest Resource Licences
- large licenses are referred to as Sustainable Forest Licences (SFL's)
- SFL - 20-year “perpetual” licenses
 - monitored for compliance and performance
 - independently audited every 5 years
 - must prepare and **comply** with 5 year (10 year in 2007) forest management plans
 - mandatory information & reporting

Forest Management Plans



- Where sustainability determined
- Mandatory public participation & First Nation consultation
- Identify all values & management to protect/enhance (e.g. fish habitat)
- Mandatory use of science-based Guides to protect values
- Determine allowable harvest levels plus access, harvest, renewal & maintenance activities

Forest Management Guides

- Science-based set of 34 documents
- Mandatory use by planning team requiring local professional application
- Standards and direction to protect/enhance
 - e.g.
 - Silviculture
 - Fish and wildlife habitat
 - Natural pattern emulation
 - Tourism
 - Other values (e.g. cultural, access, aesthetics)
- Produced with stakeholder involvement
- Currently reviewing and consolidating existing guides into 5 documents

Formal Monitoring Programs - Internal -

- Compliance (and enforcement)
- Silvicultural effectiveness
- Guideline effectiveness
- Wildlife population
- Forest health

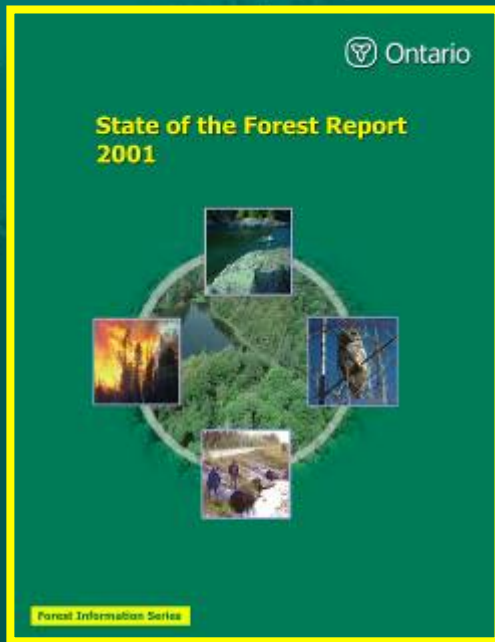


Formal Monitoring Programs - Third Party -

- Independent Forest Audit - 5 years
 - Audit compliance with the CFSA, the planning process, FMP objectives, licence obligations
 - Compare planned vs actual forest management activities and effectiveness
 - Assess sustainability
 - Recommend licence extension
- Third Party Forest Certification
 - Forest Stewardship Council (FSC), Canadian Standards Association (CSA), Sustainable Forest Initiative (SFI)

Formal Public Reporting

- Annual Report on Forest Management
- 5 Year State of the Forest Report
 - SFM criteria and indicator based
- Independent Forest Audit Reports
- Compliance and Enforcement (web site)





Questions??

rich.greenwood@mnr.gov.on.ca

(705) 945-6653