



Chicago

Great Lakes Commission 2007 Annual Meeting

Oct. 1-2, 2007

Sustainable Living on the Lakes

go

Illinois



Great Lakes
Commission
des Grands Lacs

Great Lakes Information Network (GLIN) Turns 15 in 2008

- This is the fourth redesign of GLIN in its 15-year history
- Use of GLIN continues to grow, now averaging 200,000 unique visitors and 650,000 page views per month
- GLIN is one of the Commission's most successful projects and has grown into the region's premier source for Great Lakes news and information
- We want to hear from you — the users — about how we can improve GLIN! Write to us at comments@glin.net or visit www.glin.net/forms/comment_form.html



1998-2000



1996-97



1994-95

GLIN Redesign 2008

- Began in June and projected for completion in March 2008
- Considering: user needs, content enhancements, aesthetics, usability and search capabilities

New features will include:

- Enhanced search tools, “Great Lakes Google”
- “My GLIN” news aggregator so users can customize their GLIN display based on their personal interests
- GIS/mapping functions to serve real-time and historical data on lake conditions, through a partnership with the Great Lakes Observing System



www.glin.net or www.great-lakes.net



*Great Lakes recreational
boating's economic punch*

Recreational Boating

- 4.3 M Boats – Great Lakes States
 - 911,000 on the Great Lakes
- \$16 B spent – boating and trips
 - \$19b sales, \$6b income, \$9.2b value added
- 107,000 Jobs
 - 244,000 including indirect/secondary
- 87 Harbors – Threatened by lack of Dredging



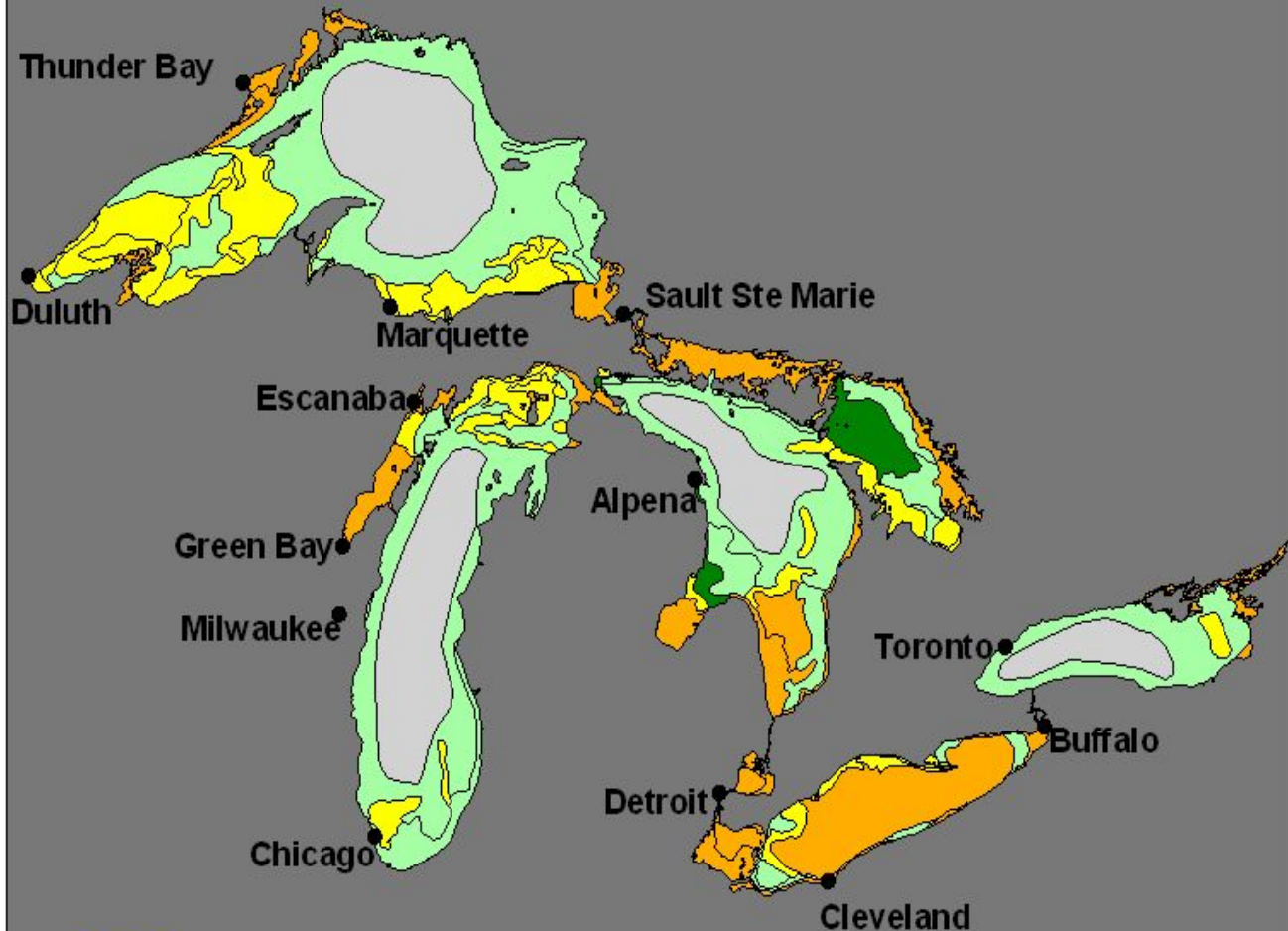


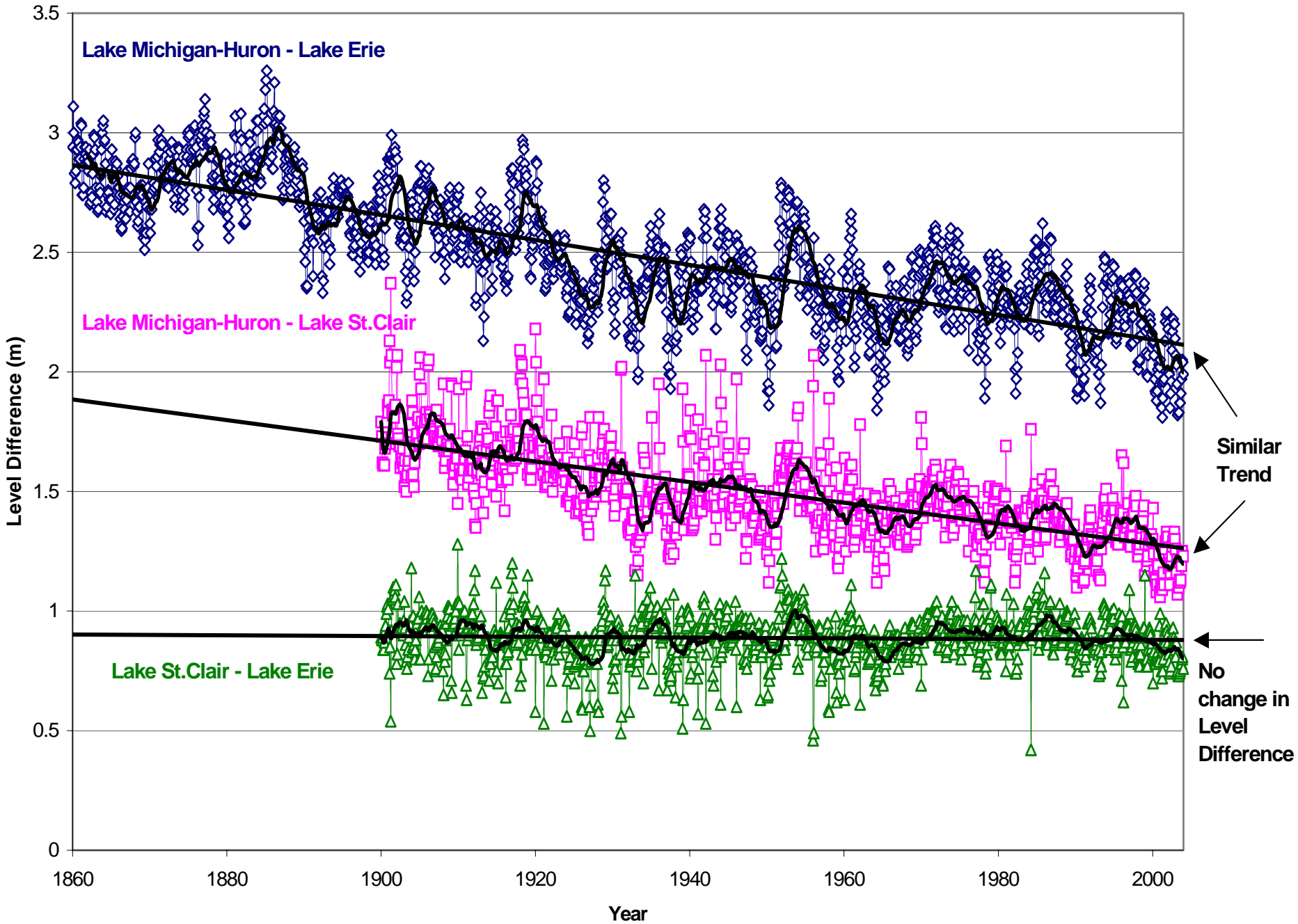
Human Changes to Lakes Michigan-Huron Water Levels

Regime Change	Date	Estimated Effect on Lake Huron Water Level (inches)
20-foot Navigation Channel Dredging	1855 to 1906	-4.0 to -9.5
Removal of Shoal – St. Clair Flat	1906	-0.5
Sinking of Steamers Fontana and Martin	1900	+1.5
Sand and Gravel Mining	1908 to 1925	-3.5
Dredging 25-foot Navigation Channel	1930 to 1937	-2.0
Dredging 27-foot Navigation Channel	1960 to 1962	-5.0
NET EFFECT	1855 to 1962	-13.0 to -18.0



Great Lakes Ice Chart From 26 Feb 07 Based on Estimated Thickness in Inches





Human Changes to Lakes Michigan-Huron Water Levels

Regime Change	Date	Estimated Effect on Lake Huron Water Level (inches)
20-foot Navigation Channel Dredging	1855 to 1906	-4.0 to -9.5
Removal of Shoal – St. Clair Flat	1906	-0.5
Sinking of Steamers Fontana and Martin	1900	+1.5
Sand and Gravel Mining	1908 to 1925	-3.5
Dredging 25-foot Navigation Channel	1930 to 1937	-2.0
Dredging 27-foot Navigation Channel	1960 to 1962	-5.0
NET EFFECT	1855 to 1962	-13.0 to -18.0





Ballast water release

photo courtesy of L. David Smith,
<http://massbay.mit.edu/exoticspecies/ballast/>

An aerial photograph of Chicago, Illinois, showing the city's grid pattern and the surrounding greenery, with Lake Michigan visible in the upper right. The word "Chicago" is overlaid in a large, bold, sans-serif font. The letters "Chi" are white, and the letters "cago" are dark blue. The "c" in "Chicago" is particularly large and stylized, with a circular cutout showing a landscape scene.

Chicago

Great Lakes Commission 2007 Annual Meeting

Oct. 1-2, 2007

Sustainable Living on the Lakes

Illinois