

The Great Lakes Observing System: Partnership for Science-based Solutions



Monday, October 5, 2008

Dr. Frank Kudrna, Vice Chair

Dr. Jennifer Read, Executive Director



Outline

- History – origin and development
- Issues GLOS is addressing
- GLOS role in the Great Lakes
- Structure and Governance
- Projects
- GLOS and You



Critical Issues GLOS is Addressing

1. Climate Change
2. Ecosystem/ Food web Integrity
3. Public Health
4. Navigation

GLOS Role

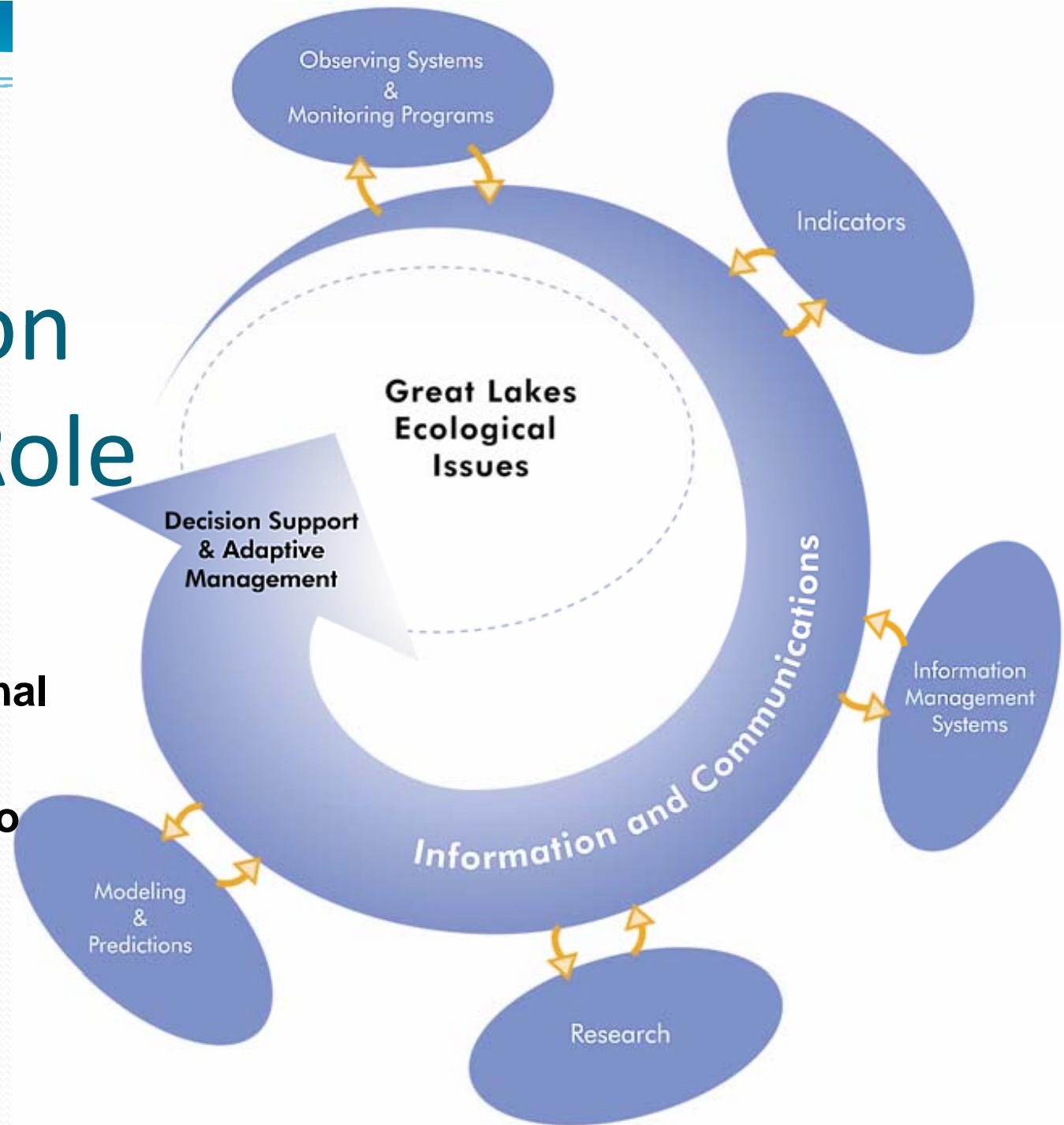


1. Categorize
2. Coordinate

3. Cooperate
4. Collaborate

Potential Application of GLOS Role

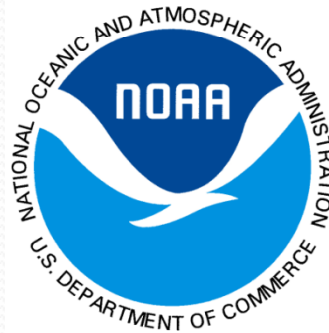
- Great Lakes Water Quality Agreement
- Great Lakes Regional Collaboration
- The Canada-Ontario Agreement
- Resource Management Tools
- Navigation Tools



GLOS Structure and Governance

- GLOS-RA leadership
 - 12 member Board of Directors (9 currently)
 - Jennifer Read, Executive Director
 - Additional staff support from GLC
 - Program Review Panel not yet constituted
 - Great Lakes Sea Grant Network support for working with various user communities
- Organizational structure
 - Public non-profit, Michigan corporation
 - 501(c)(3) tax exempt status pending

Projects



- 2007-08

- Huron-Erie Modeling
- HarborView
- Great Lakes Modeling Assessment Center
- Offshore Implementation

- 2008-09

- GLOS membership
- Online Data Management and Communications
- Huron-Erie Modeling



GLOS and GLC

- GLOS Observer status at GLC
- GLC as GLOS member
- Technical support
 - Communications
 - Data Management/Communications

GLOS and You

- Science, policy and management challenges
- GLOS mission is to support and enable science-based solutions
- GLOS is a partner in innovating Great Lakes science to meet user needs

Join us!

Benefits of Membership

- Input into new data and information products
- Leverage your organization's data/information
- Delivery of your data/information to your target audience(s)
- Collaborative opportunities/networking
- Input on future direction of GLOS

Thank You

Jennifer Read
Executive Director
jenread@umich.edu
734.936.3622
www.glos.us



*GLOS gratefully acknowledges financial and technical support from
NOAA-CSC, NOAA-IOOS and GLC*