

# Indiana Digs into the Aquatic Plant Trade



**Doug Keller, Indiana Department of Natural Resources**  
**Kristin TePas, Illinois-Indiana Sea Grant**

# Why Aquatic Plants in Trade?



Common waterweed  
*Egeria densa*  
Photo by A. Murray  
Copyright 2001 Univ. Florida



*Hydrilla*  
*Hydrilla verticillata*  
Photo by Vic Ramsey  
Copyright 1999 Univ. Florida



Common waterweed  
*Egeria densa*  
Photo by A. Murray  
Copyright 2001 Univ. Florida



*Hydrilla*  
*Hydrilla verticillata*  
Photo by Vic Ramsey  
Copyright 1999 Univ. Florida

# Green Expo Workshop

## AGENDA

- **Invasive Species and Trade in Ornamental Plants** Reuben Keller, Univ. of Notre Dame
- **Regional Perspectives: Efforts to Prevent & Control** Kathe Glassner-Shwayder, GLC
- **Invasive aquatic plant management in Indiana** Doug Keller, IN DNR
- **Breakout Session**

# Breakout Session Questions

- **What are important components of a regulatory approach?**
- **What are voluntary best management practices (BMPs) the plant industry can adopt?**
- **What kind of education and outreach strategies would be most helpful?**

# Breakout Session Outtakes

- **Regulations**
  - Risk assessment program, science-based
  - Consistent and sufficient enforcement
  - Provide regulation-awareness outreach
  - Involve industry in process



# Breakout Session Outtakes

- **Best Management Practices**
  - Promote native or non-invasive plants
  - Treat plants to remove hitchhikers
  - Provide care instructions/warnings on plants



# Breakout Session Outtakes

- **Education/Outreach**
  - Educate retailers and consumers about invasive plants
  - Create list of invasives and alternatives



# Next Steps

- **Indiana Invasive Aquatic Plant Working Group**
- **Thirteen participants w/varied roles in industry**
- **First meeting April 25th**

# **ACTIVITIES ADDRESSING INDIANA'S AIS MANAGEMENT PLAN**

**DOUG KELLER  
INDIANA AIS COORDINATOR**

# **ACTIVITIES IMPLEMENTING INDIANA SMP**

- **RAPID RESPONSE**
- **EARLY DETECTION AND MONITORING**
- **CONTROL OF ESTABLISHED AIS**
- **OUTREACH**
- **REGULATORY ACTIVITIES**

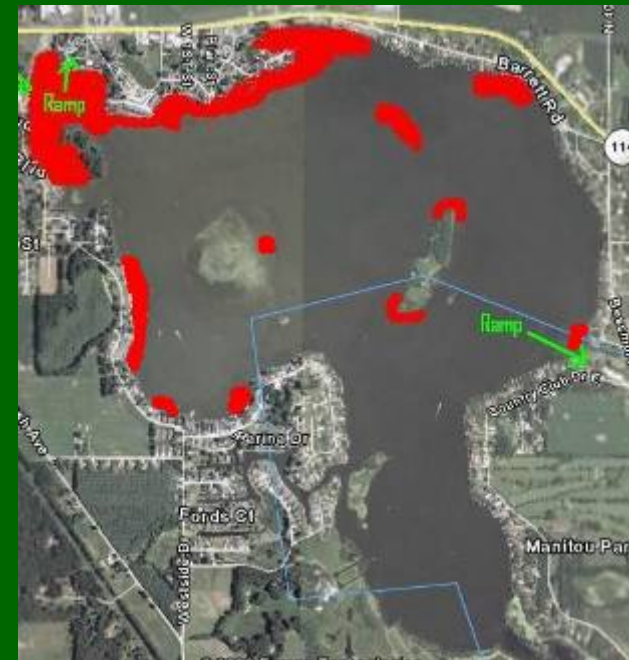
# RAPID RESPONSE

- **GRIFFY LAKE BRAZILIAN ELODEA**
  - 109 ACRE IMPOUNDMENT
  - \$135k OVER 2 YRS
  - BEGAN 2<sup>ND</sup> YR, SHOULD ACHIEVE ERADICATION
  
- **LAKE MANITOU HYDRILLA**
  - 734 ACRE LAKE
  - EXPECT AT LEAST \$2M OVER AT LEAST 4 YR PERIOD



# EARLY DETECTION AND MONITORING

- **INCREASED PLANT SURVEYS DUE TO RECENT INVASIONS**
  - 25 LAKES w/in ½ HR OF HYDRILLA INFESTATION SURVEYED
  - LAKES w/in 1 HR SURVEYED THIS YEAR
  - PLANT CONTROL COMPANIES AND LAKE GROUPS ALSO LOOKING



# CONTROL OF ESTABLISHED AIS (MAINLY PLANTS)

- \$900k IN LAKE AND RIVER  
ENHANCEMENT GRANTS FOR PLANT  
CONTROL PROJECTS
  - MAINLY FOCUS ON EURASIAN  
WATERMILFOIL
  - SOME CURLYLEAF PONDWEED



*Bass Lake*

*Aquatic Vegetation Management Plan*

*2006 Update*

February 12, 2007

Prepared for:  
Bass Lake Property Owners Association  
3620 South County Rd. 210  
Knox, IN 46534

Prepared by:  
Aquatic Control, Inc.  
PO Box 100  
Seymour, Indiana 47274

# OUTREACH

- BOAT RAMP SIGNS – STOP AQUATIC HITCHHIKERS
- HYDRILLA AND BRAZILIAN ELODEA IDENTIFICATION



## STOP AQUATIC HITCHHIKERS!™

Prevent the transport of nuisance species.  
Clean all recreational equipment.

[www.ProtectYourWaters.net](http://www.ProtectYourWaters.net)

### When you leave a body of water:

- Remove any visible mud, plants, fish or animals before transporting equipment.
- Eliminate water from equipment before transporting.
- Clean and dry anything that comes into contact with water (boats, trailers, equipment, clothing, dogs, etc.).
- Never release plants, fish or animals into a body of water unless they came out of that body of water.

**DNR**  
INDIANA DEPARTMENT OF  
NATURAL RESOURCES

PYW T851/02

# REGULATORY ACTIVITIES

- **MOST HAS BEEN REACTIVE  
(HYDRILLA, BRAZILIAN ELODEA)**
- **WORKING TO BE MORE PROACTIVE**
  - **WHITE LIST OF LEGAL BAIT FISH**
  - **PLANT TRANSPORT ON EQUIPMENT**
  - **PLANTS IN TRADE**

# GREATEST CHALLENGE



- **FUNDING**
  - PREVENTION IS CHEAP, BUT UNFORTUNATELY SPECIES STILL CROSS THE BORDER
  - CANNIBALIZING OTHER PROGRAMS TO ERADICATE
  - NO \$ EVEN FOR FEDERALLY REGULATED SPECIES THAT ARRIVE IN A NEW REGION
- **LIMITED FUNDING MEANS FEW PEOPLE DEDICATED TO AIS ISSUES**