

Asian Carp Coordination and Response

Presented at the

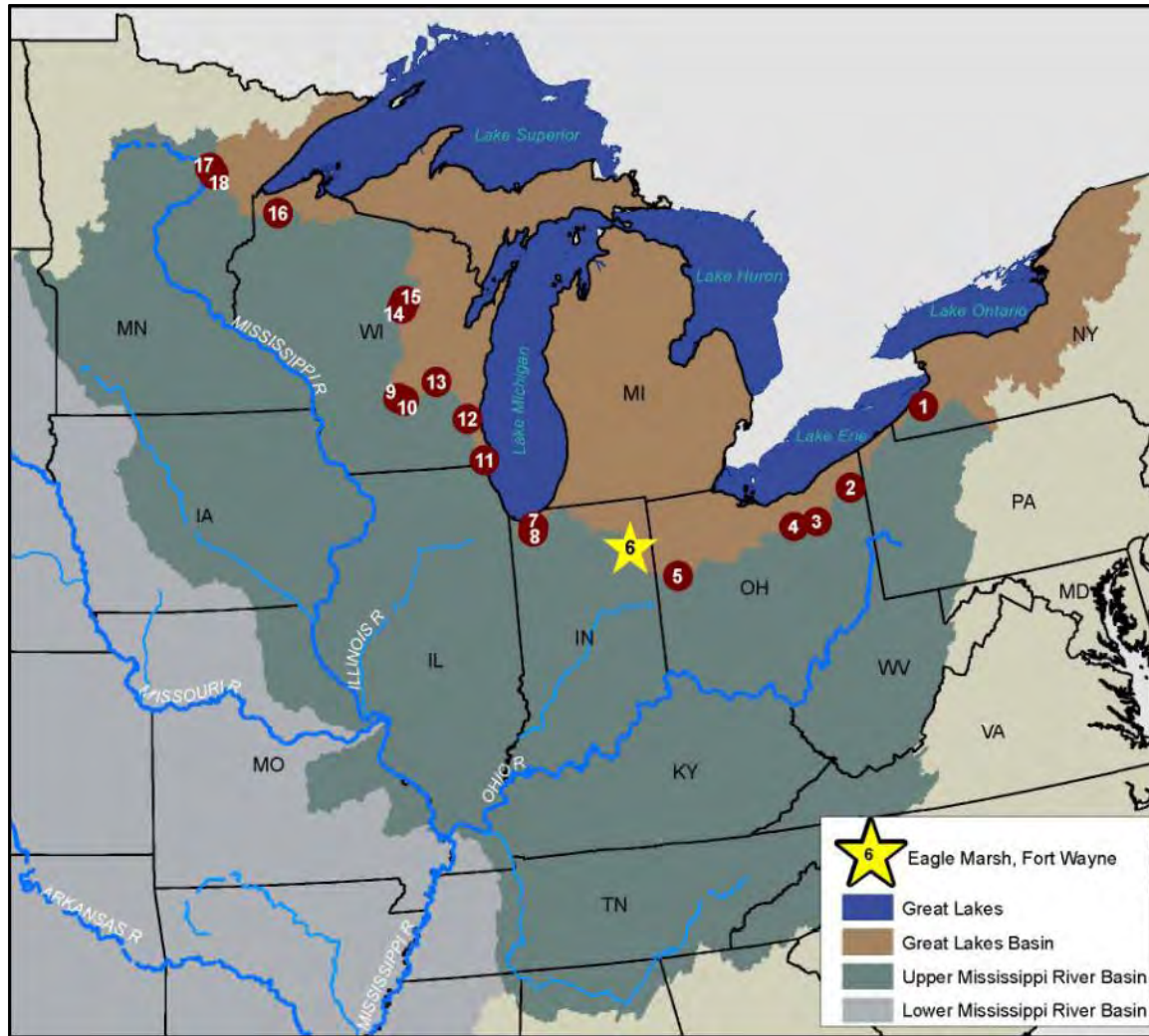
Great Lakes Panel/AIS Meeting
December 9, 2010

Bill Bolen
Senior Advisor
USEPA

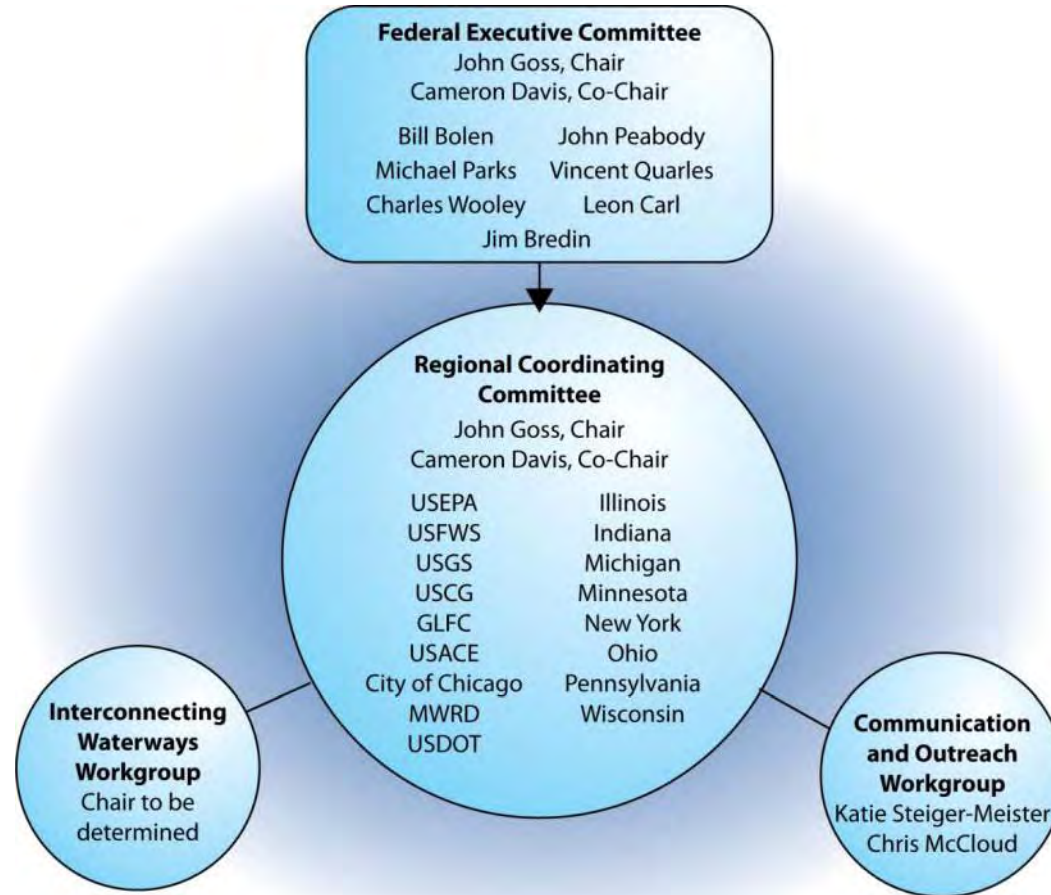
Chicago Area Waterway System



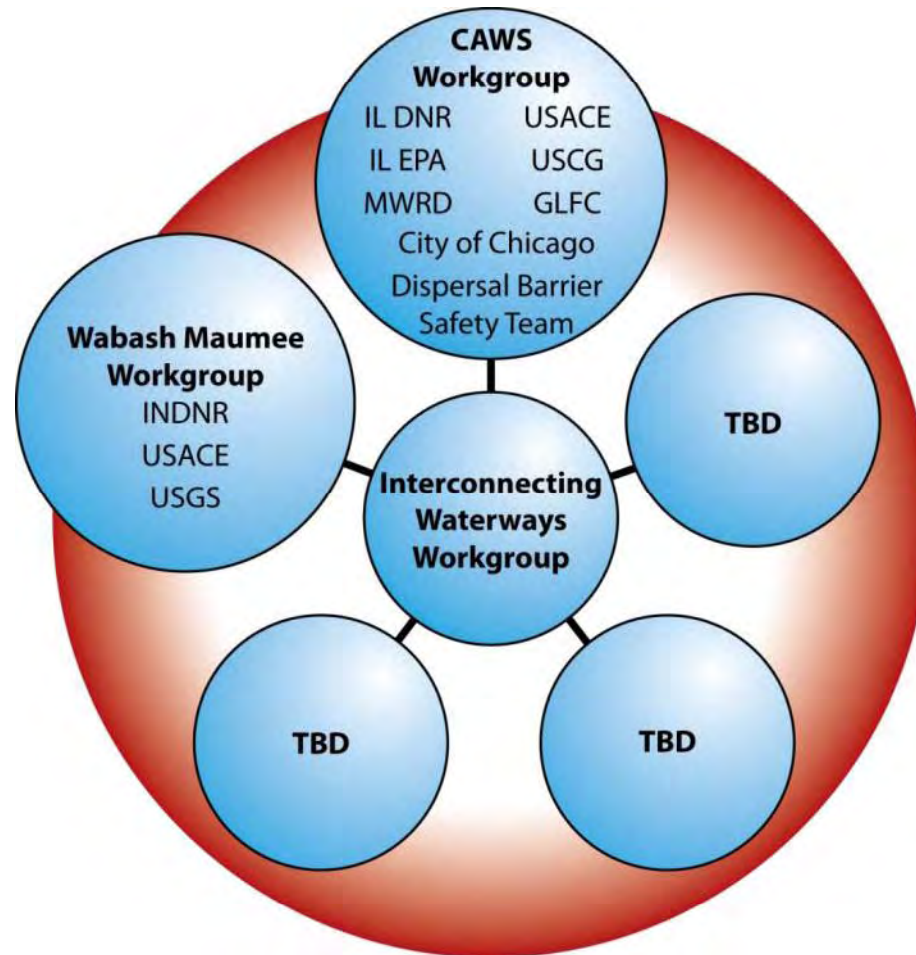
Other Pathways



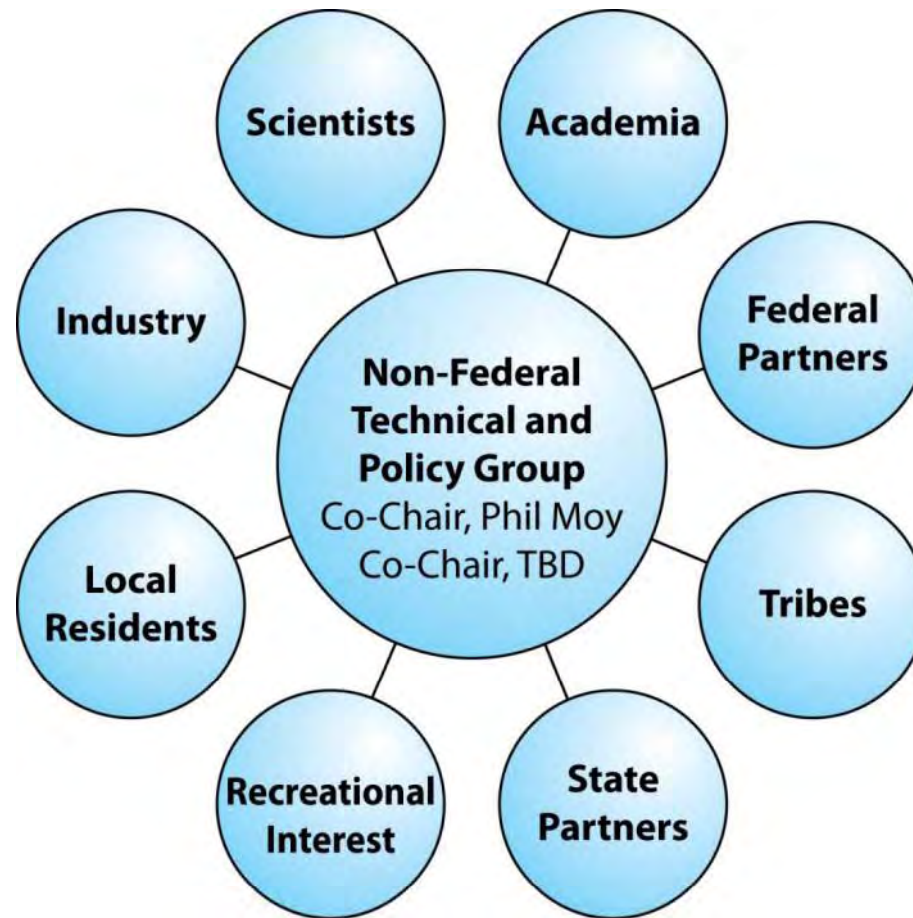
Asian Carp Regional Coordinating Committee Organization Chart



Interconnecting Waterways Workgroup



Non-Federal Technical and Policy Workgroup



Asian Carp Framework

Main Objectives

- Outline the immediate actions agencies are taking.
- Integrate and unify the existing and future actions of participating agencies.
- Transition from a single point of defense (e.g., electric barriers) to a multi-tiered defense (e.g., fishery management, structures, biological, etc.).
- Provide general direction while recognizing that agencies require flexibility to best act.
- Identify potential hurdles that might complicate Framework implementation.
- Identify opportunities for stakeholders to contribute in meaningful ways.

Proposed Action Item Categories

- **Targeted Monitoring Assessment Activities Above and Below the Electric Barrier System:** Operations to confirm and reduce Asian carp population upstream and downstream of the electric barriers.
- **Commercial Harvesting and Removal Actions Below the Electric Barrier System:** Actions intended to reduce populations of potential invaders on the electric barriers.
- **Barrier Action and Waterway Separation Measures:** Actions to further separate the Great Lakes and Mississippi River Basin thereby decreasing the opportunity for Asian carp to enter the Great Lakes.
- **Great Lakes Mississippi River Inter-Basin Study and Connecting Channel Activities:** Studies to further identify potential routes for entry into the Great Lakes and assessment of risk for Asian carp in the Great Lakes.

Proposed Action Item Categories (cont.)

- **Research and Technology Development:** Short- or long-term projects to identify novel control methods or movement patterns of Asian carp.
- **Environmental Deoxyribonucleic Acid (eDNA) Analysis and Refinement:** Actions aimed at refining the use of eDNA as a viable monitoring tool for Asian carp and to increasing agency capability in analysis.
- **Enforcement Activities:** Actions to further decrease the transport of live Asian carp into new waterways and to inform the public of their risks.
- **Funding Opportunities and Agency Preparation Activities for AIS:** Projects that provide funding opportunities to further collaborative efforts with state, local, and federal agencies and further agency AIS planning and preparation with all stakeholders beyond those with jurisdictional authority.
- **Other Asian Carp Support Activities:** Actions to further the development and progression of Asian carp efforts.

Electric Barrier and Waterway Separation Measures

- Construction of the DP and I and M Barriers
 - Expedited Construction of Barrier IIB
 - Modified Structures and Operations
 - Tagged Fish Research
 - Wabash-Maumee Separation

The Asian Carp Regional Coordinating Committee thanks the GLP for your support!

Contact Information

Bill Bolen

Bolen.bill@epa.gov

312-353-6316

Don't forget to go to....

Asiancarp.org