

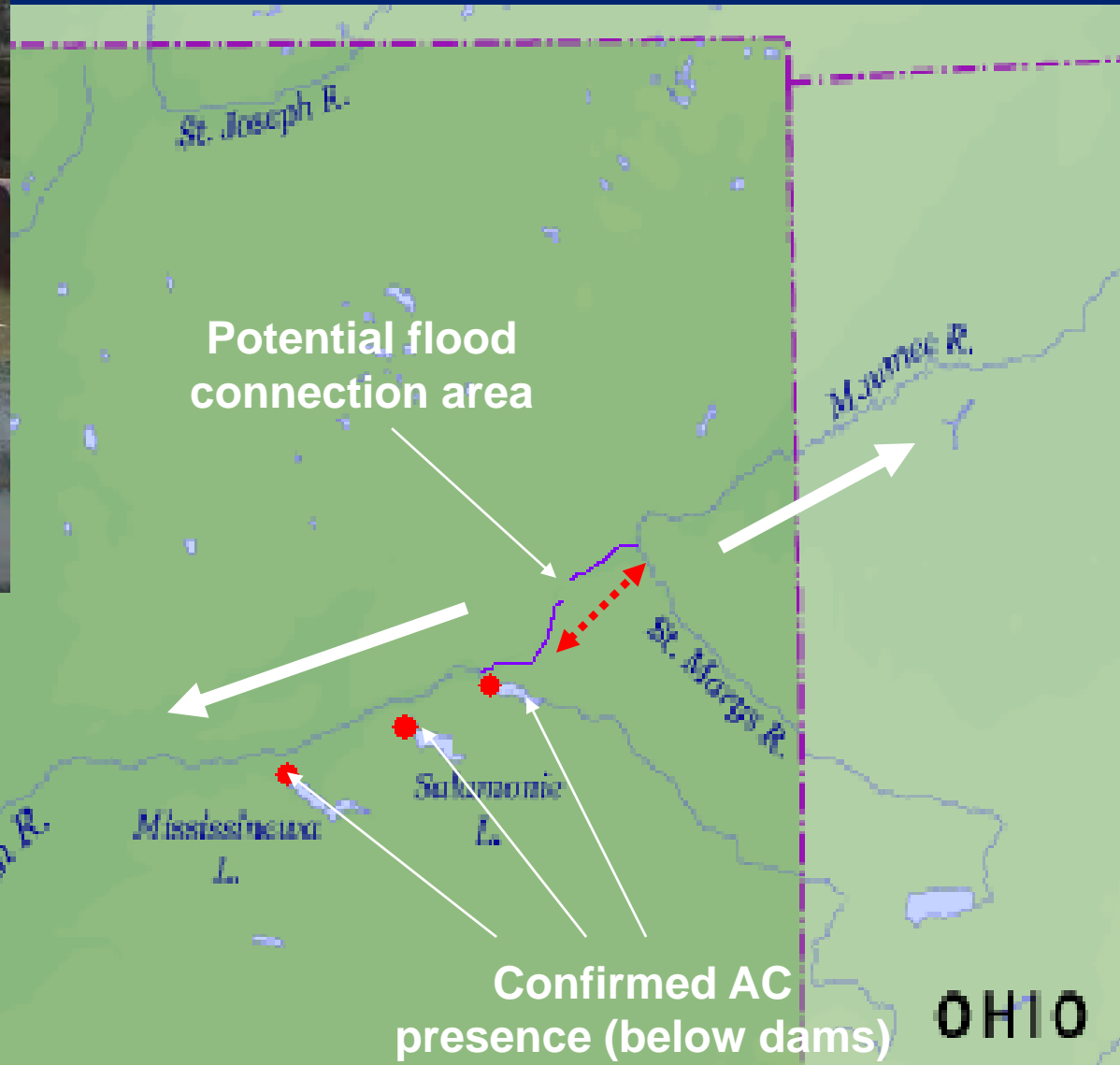
# INDIANA GLRI EXPECTED PROJECTS

DOUG KELLER  
AIS COORDINATOR

# FUNDING LEVEL

- \$792K FOR IMPLEMENTATION OF ANS MANAGEMENT PLAN
  - GRANT AGREEMENT COMPLETE
  - 1 YEAR MONEY?
- \$640K FOR ASIAN CARP ACTIVITIES
  - GRANT AGREEMENT IN PREPARATION
  - 2 YEAR MONEY

# CRITICAL CONNECTION



# WABASH-MAUMEE BOUNDARY SHOWN (red)– wide 100 yr natural flood plain connecting basins



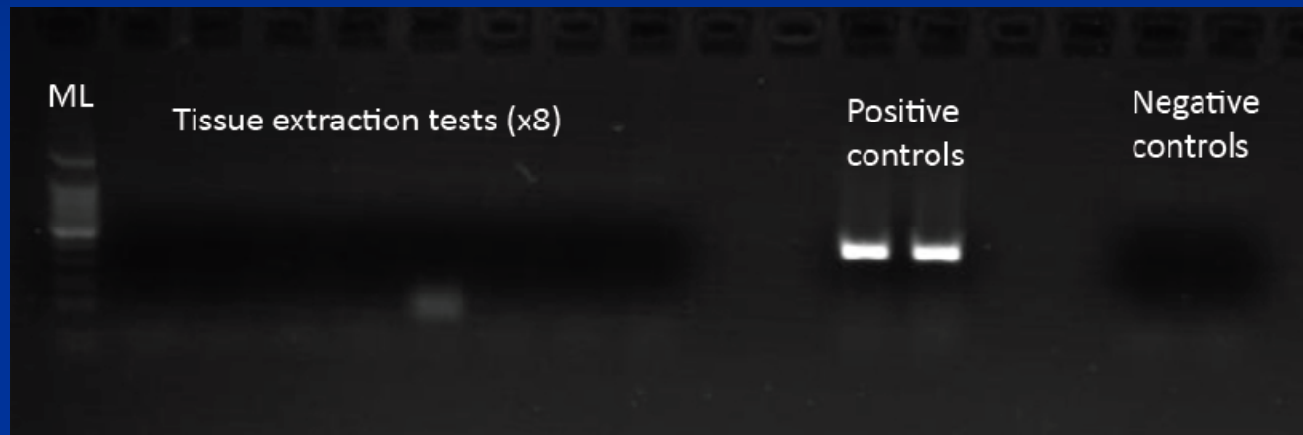
# Asian Carp De-“FENCE”



- 1,200 FEET LONG
- 8' HIGH, 2' UNDERGROUND
- \$180,000
- GOAL 1&3 IN GLRI ACTION PLAN

# STUDIES PLANNED

## ■ eDNA (upper Wabash and Maumee) – Notre Dame



- How far up are AC in the Wabash watershed?
- Could there be fish present on the Great Lakes side of the boundary?
- 240 samples collected in October with results likely in December
- GOAL 4 GLRI ACTION PLAN

# STUDIES PLANNED

- 2 YEAR TELEMETRY (upper Wabash) - Purdue
  - Where are fish concentrating?
  - Where are they migrating to for spawning?
  - Do AC show any interest in running up Little River?
  - Are they “testing” the fence?
  - GOAL 4 GLRI ACTION PLAN

# STUDIES PLANNED

- 2 YEAR SPAWNING EVALUATION (upper Wabash and upper EF White)
  - Where does spawning occur?
  - What are the conditions that trigger spawning (temperature, flow rate, river stage, etc)?
  - Where do juveniles go to for development?
  - GOAL 4 GLRI ACTION PLAN
    - These rivers are much smaller than other Great Rivers where AC have been looked at. This information may help predict possible spawning locations in the Great Lakes watershed.

# ANS PLAN IMPLEMENTATION

- ERADICATE NEW INVASIVE PLANTS (\$565K)
  - HYDRILLA
    - MANITOU & 4 SMALL PRIVATE WATERS
    - \$400K BUDGETED
  - BRAZILIAN ELODEA
    - 4 SMALL WATERS
    - \$60K BUDGETED
  - PARROT FEATHER
    - 1 PUBLIC WATER & SOME SMALL PONDS
    - \$15K BUDGETED
  - STARRY STONEWORT
    - 3 PUBLIC WATERS
    - \$90K BUDGETED
  - GOAL 1&5 GLRI ACTION PLAN

# ANS PLAN IMPLEMENTATION

- CONTROL ESTABLISHED PLANTS  
(\$172K)
  - EURASIAN WATERMILFOIL
    - 5 HIGH USE STATE CONTROLLED WATERS
  - PURPLE LOOSESTRIFE
    - MONITOR NATURAL SPREAD OF BIOCONTROL
    - INTRODUCE ROOT MINING WEEVILS
  - PHRAGMITES
    - DNR NATURE PRESERVE
- GOAL 5 GLRI ACTION PLAN

# ANS PLAN IMPLEMENTATION

- OUTREACH AND EDUCATION
  - \$50K BUDGETED
  - PARTNER WITH
    - SEA GRANT NETWORK
    - WILDLIFE FOREVER
- GOAL 3 GLRI ACTION PLAN



**Habitattitude**™

PROTECT OUR ENVIRONMENT  
DO NOT RELEASE FISH AND AQUATIC PLANTS

PIJAC • U.S. FISH & WILDLIFE SERVICE • NOAA'S SEA GRANT

[www.Habitattitude.net](http://www.Habitattitude.net)



**STOP AQUATIC  
HITCHHIKERS!**™

Prevent the transport of nuisance species.  
Clean all recreational equipment.

[www.ProtectYourWaters.net](http://www.ProtectYourWaters.net)

# ANS PLAN IMPLEMENTATION

- AQUATIC TAXA RISK ASSESSMENTS
  - COOPERATION WITH NOTRE DAME GLRI PROJECT
  - AND IMPLEMENT FINDINGS THROUGH RULE
  - GOAL 2 GLRI ACTION PLAN
- EARLY DETECTION SURVEYS
  - TNC SURVEYED PLANTS IN NEARLY ALL STATE PUBLIC WATERS IN 2009 AND 2010
  - REPEAT AT SOME POINT (PROBABLY NOT 2011)
  - GOAL 4 GLRI ACTION PLAN
- RAPID RESPONSE PLANNING
  - USE MRBP MODEL AS TEMPLATE
  - GOAL 4 GLRI ACTION PLAN