

The National Park Service and VHS

Bob Krumenaker
Superintendent
Apostle Islands National Lakeshore
Bayfield, Wisconsin



NATIONAL PARK SERVICE • LAKE SUPERIOR NATIONAL PARKS

Apostle Islands and Pictured Rocks National Lakeshores • Grand Portage National Monument • Isle Royale National Park

The Lake Superior National Parks

Grand Portage National Monument

Authorized by Act of Congress 1958

1 mile of coastline

[Fully within the

Grand Portage

Indian Reservation

Established by Treaty 1854]

Isle Royale National Park

Authorized by Act of Congress 1931

International Biosphere Reserve 1981

438,000 acres of Lake Superior jurisdiction

338 miles of coastline

Pictured Rocks National Lakeshore

Authorized by Act of Congress 1966

10,000 acres of Lake Superior jurisdiction

47 miles of coastline

Apostle Islands National Lakeshore

Authorized by Act of Congress 1970

27,000 acres of Lake Superior jurisdiction

154 miles of coastline



NATIONAL PARK SERVICE • LAKE SUPERIOR NATIONAL PARKS

Apostle Islands and Pictured Rocks National Lakeshores • Grand Portage National Monument • Isle Royale National Park

Congressional Mandates for National Park Areas

- 1916 NPS Organic Act
 - “to conserve the scenery and the natural and historic objects and the wild life therein ... by such means as will **leave them unimpaired** for the enjoyment of future generations”
- 1970 General Authorities Act
 - “these areas derive increased national dignity and recognition of their **superb environmental quality** through their inclusion jointly with each other in one national park system preserved and managed for the benefit and inspiration of all the people.”
- 1978 NPS “Redwood Amendment” to the Organic Act
 - “...the **protection, management, and administration of these areas** shall be conducted in light of the high public value and integrity of the National Park System and **shall not be exercised in derogation of these values and purposes...**”



The NPS *Must* Protect the Parks – *by law!*

Working Both Inside and Outside of National Park Boundaries

- 1978 Senate Committee Report on the Redwood amendment:
 - “The Secretary [of the Interior] has **an absolute duty**, which is not to be compromised, to fulfill the mandate of the 1916 Act **to take whatever actions and seek whatever relief as will safeguard the units of the national park system.**”
- 1998 Bicycle Trails v. Babbitt Federal Court Decision
 - [The NPS must] treat all units ... with resource protection the overarching concern.”
- 1990 National Park System Resource Protection Act
 - “The Secretary shall **undertake all necessary actions to prevent or minimize the destruction, loss of, or injury to park system resources**, or to minimize the imminent risk of such destruction, loss, or injury.”

NATIONAL PARK SERVICE • LAKE SUPERIOR NATIONAL PARKS

Apostle Islands and Pictured Rocks National Lakeshores • Grand Portage National Monument • Isle Royale National Park



Existing Coast Guard Ballast Water Regulations

Intend Protection for Sensitive Areas -- 33 CFR 151.2035 (a) (1)

“Masters, owners, operators, or persons-in-charge of all vessels equipped with ballast water tanks that operate in the waters of the U.S. must:

- *“Avoid the discharge or uptake of ballast water in areas within or that may directly affect marine sanctuaries, marine preserves, marine parks or coral reefs.”*

However well-intended ...

- “Avoid” provides guidance but is not enforceable
- Are the **fresh waters of the Great Lakes national parks** included within *“marine sanctuaries, marine preserves, marine parks”* ?
- Nationally-significant, unique, or vulnerable aquatic resources are not limited to salt water parks or preserves



Context for NPS Involvement in VHS Planning

- NPS has significant natural resources at risk
- NPS has clear authority to be involved
- We recognize that our jurisdiction is limited
- Protecting Lake Superior = Protecting the National Parks
- We need to work in a multi-agency, multi-jurisdictional arena



NATIONAL PARK SERVICE • LAKE SUPERIOR NATIONAL PARKS

Apostle Islands and Pictured Rocks National Lakeshores • Grand Portage National Monument • Isle Royale National Park



NPS Strategy

- Do everything we can within our own jurisdiction and authority
- Encourage others to exercise their authorities and work with them
- Encourage new authorities, technologies, and approaches
- Keep/increase the sense of urgency




NATIONAL PARK SERVICE • LAKE SUPERIOR NATIONAL PARKS

Apostle Islands and Pictured Rocks National Lakeshores • Grand Portage National Monument • Isle Royale National Park



NPS/Grand Portage Indian Band VHS Plan

- Developed with interagency experts
- Evaluated and prioritized *all* vectors
 - **Inside** and outside park boundaries



Emergency Prevention and Response Plan For Viral Hemorrhagic Septicemia

National Park System Units and the Grand Portage Indian Reservation within the Lake Superior Basin

March 14, 2008
EXPERIENCE YOUR AMERICA


Relative risk vectors within NPS and GPIR jurisdictional boundaries

Vector	Risk Factors			Human Activities		Risk Reduction Feasible on NPS Units?	Prevention Actions	Risk of VHS introduction with Prevention Actions
	Volume of Activity *1	Transport Potential *2	Propagule Pressure *3	Risk Score	Current Risk to NPS Units			
	Bait	High	High	Med	HHM			
Recreational boating and fishing	High	Med	Med	HMM	M+	Yes	Require draining and drying of boats, prior to entry into NPS waters.	Low
Agency operations	High	Med	Low	HML	M	Yes	Develop and adopt HACCP Plans Biosecurity practices Conditions on research and other permits Conditions on concessions and commercial services	Low
Ballast water with Fish	Low	High	Med	LHM	M	Yes	To keep risk at low, continue prohibition on ballast water exchange within ISRO waters and expand to include all Lake Superior National Parks if USCG regulation is not timely.	Low
Commercial and subsistence Fishing	Med	Med	Low	MML	M-	Yes	Outreach to commercial and subsistence fishermen. Recommend sampling and best management practices	Low
Stocking	Low	High	Low	LHL	L+	Yes	Require batch certification of all stocked fish	Low
Vector	Risk Factors			Natural Processes		Prevention Actions Feasible on NPS Units	Potential Prevention Actions	Risk of VHS introduction with Prevention Actions
	Volume of Activity *1	Transport Potential *2	Propagule Pressure *3	Risk Score	Current Risk to NPS Units			
	Wild fish movements (into and within NPS units)	Med	High	Low	MHL			
Migratory Birds	High	Low	Low	HLL	L+	No	None	Low



NPS/Grand Portage Indian Band VHS Plan

- Developed with interagency experts
- Evaluated and prioritized *all* vectors
 - Inside and **outside** park boundaries



Emergency
Prevention and Response Plan
For
Viral Hemorrhagic Septicemia

*National Park System Units and the Grand Portage Indian
Reservation within the Lake Superior Basin*

March 14, 2008
EXPERIENCE YOUR AMERICA

Human Activities						
Vector	Risk Factors			Risk Score	Current Risk to Park Units	Prevention Actions
	Volume of Activity *1	Transport Potential *2	Propagule Pressure *3			
Ballast water	High	High	Med	HHM	H	Cooperate with regulatory authorities to promote effective ballast water regulation for Lake Superior
Bait	High	High	Med	HHM	H	Support improved certification protocols and regulation as necessary.
Recreational boating and fishing	High	Med	Med	HMM	M+	Support effective regulations (drain and dry) and enforcement.
Stocking	Med	High	Low	MHL	M	Support continued evaluation and improvement of certification protocols. Lead by example (HA CCP plans etc). Encourage practices that minimize risk by other management agencies.
Agency operations	Med	Med	Low	MML	M-	
Commercial and Subsistence Fishing	Med	Med	Low	MML	M-	Cooperate with appropriate regulatory agencies to promote practices that reduce risk of transmission
Natural Processes						
Vector	Risk Factors			Risk Score	Current Risk to Park Units	Prevention Actions
	Volume of Activity *1	Transport Potential *2	Propagule Pressure *3			
Wild fish Movements (from lower Great Lakes)	Low	High	Med	LHM	M	Support studies of fish movement from lower Great Lakes to Lake Superior and measures to reduce movement as appropriate
Wild fish Movements (w/in Lake Superior)	Med	High	Low	MHL	M	Cooperate with other agencies to implement sampling and testing within NPS waters.
Migratory Birds	High	Low	Low	HLL	L+	None

Relative risk vectors outside NPS and GPIR jurisdictional boundaries



NPS/Grand Portage Indian Band VHS Plan

- Approved March 14, 2008
- Prevention and Response
- Being Implemented
- Major Action Items
 - Education
 - Boats
 - Bait
 - Ballast
 - New Regulations

Viral Hemorrhagic Septicemia or VHS

Pictured Rocks National Lakeshore
National Park Service
U.S. Department of the Interior



Viral Hemorrhagic Septicemia or VHS



Grand Portage National Monument
National Park Service
Grand Portage Band of Lake Superior
Chippewa

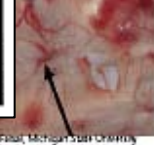
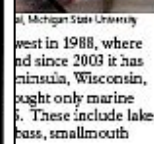


Drain and Dry

Attention: Kayakers and boaters...
Before you enter or leave a body of water you must drain/dry your equipment and remove all vegetation.

By doing so, **YOU**
help to prevent the spread of invasive species such as the deadly fish virus VHS.

Note: Detailed information is available on bulletin boards and at visitor centers.



Michigan State University
first reported in 1988, where
and since 2003 it has
Peninsula, Wisconsin,
thought only marine
fish. These include lake
trout, bass, smallmouth

Michigan State University
first reported in 1988, where
and since 2003 it has
Peninsula, Wisconsin,
thought only marine
fish. These include lake
trout, bass, smallmouth



Michigan State University
first reported in 1988, where
and since 2003 it has
Peninsula, Wisconsin,
thought only marine
fish. These include lake
trout, bass, smallmouth

It's the law.

the Great Lakes area.

How do fish get VHS?

Fish are most likely to get VHS by eating an infected fish. Fish may also pick up VHS when they are in the water, especially when they are stressed and the water is cold. VHS can be in urine, feces, and sexual fluids and can be transmitted to other fish through wounds or the gills if the virus is quite concentrated in the water. In some fish species the virus also can be transmitted from an infected female to the surface of her eggs. Outbreaks of the disease often occur during spring spawning runs when the water is cold, many fish are crowded together, and the fish are stressed.



Emergency Prevention and Response Plan and new bait use and boat cleaning restrictions for Viral Hemorrhagic Septicemia (VHSv) at Isle Royale National Park.

The plan focuses on preventing, detecting, responding, and accessing the risk of VHSv introduction in the four units of the National Park Service located in Lake Superior and the Grand Portage Indian Reservation. The plan also provides a framework for response. To view the plan, [click here](#). To view new regulations for boat cleaning and bait use in Lake Superior waters inside the park's boundary, [click here](#). To view the official news release, [click here](#).

NATIONAL PARK SERVICE • LAKE SUPERIOR NATIONAL PARKS

Apostle Islands and Pictured Rocks National Lakeshores • Grand Portage National Monument • Isle Royale National Park

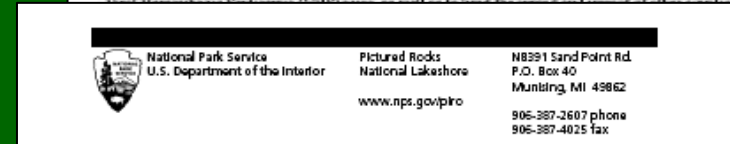
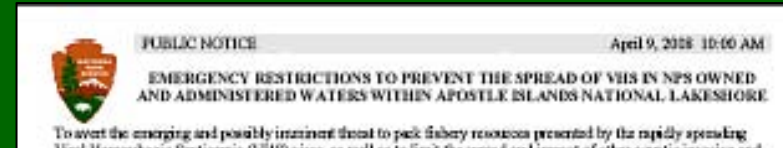


Park-Specific Emergency Restrictions

- Ballast water exchange within park boundaries
- Drain/dry/disinfect boats and equipment*
- Limits on bait usage and fishing practices*

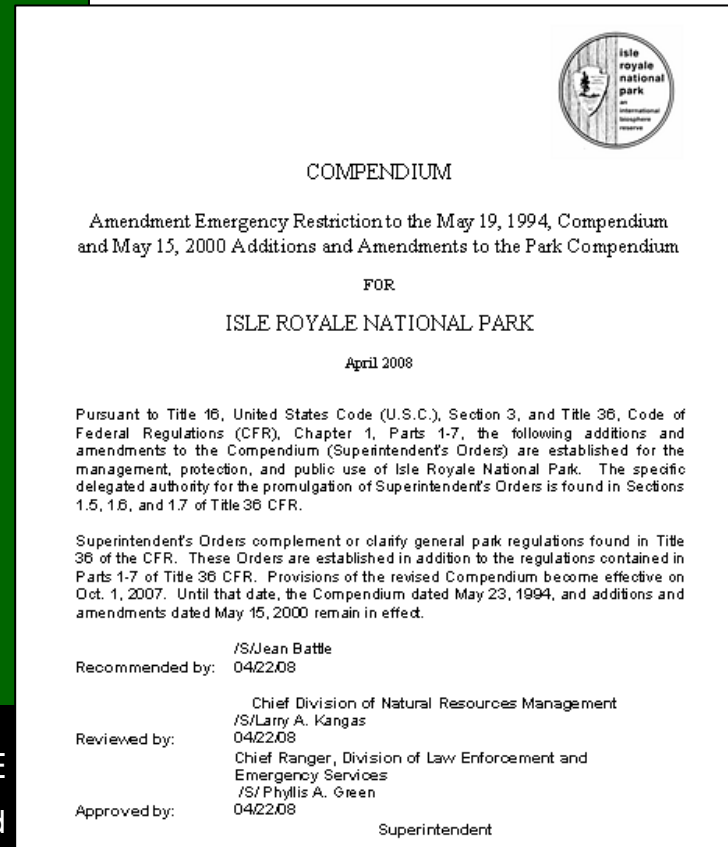


*Coordinated closely with state agencies



Pictured Rocks Public Notice

EMERGENCY RESTRICTIONS TO PREVENT THE SPREAD OF VHS
IN NPS OWNED AND ADMINISTERED WATERS
WITHIN PICTURED ROCKS NATIONAL LAKESHORE



Bottom Line for the NPS

- NPS is and will remain heavily engaged in the basin-wide effort to prevent VHS and other ANS introductions
- We intend to lead by example within our boundaries
- The great public interest in national parks provides an opportunity for NPS to educate thousands of people
- We will respectfully and persistently engage with other entities outside of our boundaries
- We applaud all those who are taking action
- The Lake Superior national parks are the national and international gems of the lake – and perhaps the “sentinels” of environmental health for all of us



The National Park Service and VHS

Bob Krumenaker
Superintendent
Apostle Islands National Lakeshore
Bayfield, Wisconsin



NATIONAL PARK SERVICE • LAKE SUPERIOR NATIONAL PARKS

Apostle Islands and Pictured Rocks National Lakeshores • Grand Portage National Monument • Isle Royale National Park

