



AIS Databases

Tools for Information Coordination

Rochelle Sturtevant

NOAA

NCRAIS, GLERL, Sea Grant



NATIONAL CENTER FOR RESEARCH ON
AQUATIC INVASIVE SPECIES



NIASDWG

nonindigenous aquatic species database working group

NEMESIS

The *National Exotic Marine and Estuarine Species Information System* provides data on species and distributions for marine and estuarine species.



The USGS Nonindigenous Aquatic Species fact sheets and real-time aquatic introductions nationwide on freshwater species.

GLANSIS

The *Great Lakes Aquatic Species Information System* node for and is a subset

EDAIS

NOAA's *Early Detection of Aquatic Invasions* (EDAIS) includes a database for regionally comparing regional

with new monitoring inventory lists containing 1000 species. Unrecognized aquatic taxa can be identified by taxonomic experts, available online in early 2000

NBIC

The *National Ballast Information Clearinghouse* specializes in national data regarding movement of AIS via ballast water.



Sea Grant Nonindigenous Species Information System provides online research publications, outreach materials, images, photos and educational tools.



National Aquatic Nuisance Species Clearinghouse

The *National Aquatic Nuisance Species Clearinghouse* provides a catalog for interlibrary loan hard copy AIS research

Aquatic Invasions Research Directory

The *Aquatic Invasions Research Directory* provides information on researchers working on AIS internationally.

Great Lakes - St. Lawrence Research Inventory

The *Great Lakes - St. Lawrence Research Inventory* includes 100 research projects in the Great Lakes region.

Sea Grant

Sea Grant Projects is a database currently under development which will include information on all Sea Grant AIS projects.



<http://www.anstaskforce.gov/experts>

Public View



This database was designed to direct users to invasive species experts. It has been set up as a 2-tier system with the first tier accessible to the public. The public portion of the database will guide you to a state contact who acts as a filter for information and identifications. If they can't answer your question, these state contacts have the ability to log in to the second tier experts.

Search the Invasive Species Experts Database:

Choose a state where the specimen was found:

State:

If you have any questions regarding the Experts database or would like to be added as an expert, please contact dave_britton@fws.gov

Other Resources for Taxonomic Experts

- ◆ [TRED](#) (Taxonomic Resources and Expertise Directory)
- ◆ [DAISIE](#) (European Alien Invasive Species Expertise Registry)
- ◆ NOAA's Taxonomic Cadre

Public View (Tier 1)



ANS Task Force Experts Directory

Name	State	Discipline	Affiliation	ExpertProfile
Mike Armstrong	AR	General Aquatic-All	Arkansas Game and Fish Commission	State ANS contact

[Back to the Search Page](#)

IL – Pat Charlebois, Steve Schultz

IN – Doug Keller

MI - Carol Swinehart, Ron Kinnunen

MN – Doug Jensen, Jay Rendall

NY – Dave MacNeill, Leslie Surprenant

OH – Larry Goedde, Kevin Kayle, Dave Kelch, John Navarro, et al

ONT – Invading Species Hotline

PA – Jim Grazio, Kevin Hess, Robert Morgan, Chris Urban, et al.

WI – Ron Martin, Phil Moy

Logged in View



ANS Task Force Experts Directory

[Add New Expert](#)

Name Tier State Discipline Grouping Phrase in Profile

(Results sorted by Last Name)

	Name	Tier	State	Discipline	Affiliation	ExpertProfile
EDIT	Jon Ambrose	1	GA	General Terrestrial-All	Georgia Department of Natural Resources	State contact for terrestrial issues
EDIT	Don Archer	1	UT	General Aquatic-All	Utah Division of Wildlife Resources	State ANS contact
EDIT	Mike Armstrong	1	AR	General Aquatic-All	Arkansas Game and Fish Commission	State ANS contact
EDIT	Lisa Barno	1	NJ	General Aquatic-All	New Jersey Department of Environmental Protection	State ANS contact
EDIT	Karen Bennett	1	DE	General Terrestrial-All	Delaware Department of Natural Resources and Environmental Control	State contact for terrestrial issues
EDIT	Kim Bogenschutz	1	IA	General Aquatic-All	Iowa Department of Natural Resources	State ANS contact
EDIT	Jeff Boxrucker	1	OK	General Aquatic-All	Oklahoma Department of Wildlife Conservation	State ANS contact
EDIT	John Buhnerkempe	1	IL	General Terrestrial-All	Illinois Department of Natural Resources	State contact for terrestrial issues
EDIT	Gerald Buynak	1	KY	General Aquatic-All	Kentucky Fish and Wildlife Resources	State ANS contact

Welcome pfuller!
[\(logout\)](#)

[Experts Listing](#)

[Add New Expert](#)

[Change Password](#)

[Add/Edit Users](#)

ANS Task Force Experts Directory

Welcome pam!
[Logout](#)

[Search](#)
[Tier2 Search](#)

[Edit Experts](#)
[Add New Expert](#)

[Add/Edit Users](#)

[Add New Expert](#)

Tier: [Any] State: FL - Florida
 Discipline: [ANY] Grouping: [ANY]
 Phrase in profile:

	Name	Tier	State	Discipline	Affiliation	ExpertProfile
EDIT	Dr. William Smith-Vaniz	2	FL	Taxonomy Fishes	US Geological Survey	cichlids and marine fishes
EDIT	Jim Williams	2	AL FL GA	Taxonomy Fishes Taxonomy Mollusks	US Geological Survey	freshwater fishes and unionid mussels
EDIT	Pam Fuller	1	AL AR CA CO FL	Pathways Fishes Pathways Crustaceans Pathways Mollusks Taxonomy Fishes	US Geological Survey	distribution of introduced aquatic species
EDIT	Skip Snow	1	FL	Control Reptiles Pathways Reptiles Taxonomy Reptiles	Everglades National Park	expert on snake introductions in the Everglades; especially Pythons
EDIT	Dr. Walt Meshaka	2	FL	Pathways Reptiles Pathways Amphibians Taxonomy Reptiles Taxonomy Amphibians	Penn State University	expert on species and distribution of introduced reptiles and amphibians in Florida
EDIT	Harriet Perry	2	AL FL LA MS TX	Taxonomy Crustaceans	Gulf Coast Research Lab	expert in decapod crustaceans in the Gulf of Mexico
EDIT	Dr. Monty Graham	2	AL FL LA MS TX	Taxonomy Coelenterates	Dauphin Island Marine Lab	expert in identification of Gulf of Mexico jellyfish; especially <i>Phyllorhiza punctata</i>
EDIT	Scott Hardin	1	FL	Control Mammals	FL Fish and Wildlife Conservation Commission	state contact for Gambian pouch rats; State ANS contact



ANS Task Force Experts Directory

Welcome pfuller!
[\(logout\)](#)

[Experts Listing](#)

[Add New Expert](#)

[Change Password](#)

[Add/Edit Users](#)

Add Expert:

Title/First/LastName

Affiliation

Address1

Address2

City

State

Zip

E-mail

Phone

Tier 1 (publicly accessible)
Tier 2 (hidden from public)

Profile

Tier: Tier 1 (publicly accessible)

Primary State: - select a state - (if expert in nation)

Expert in: - select a Discipline - - select a Group -

Group

- A-Aquatic All
- A-Terrestrial All
- I-Annelids
- I-Coelenterates
- I-Crustaceans
- I-Mollusks
- I->>>>>
- P-Plants Aquatic
- P-Plants Terrestrial
- V-Amphibians
- V-Fishes
- V->>>>

Discipline

- Control
- Ecology
- General
- Pathways
- Physiology
- Taxonomy

GLANSIS

is the Great Lakes node
of the national
Nonindigenous Aquatic Species
Database
Maintained by USGS



<http://www.glerl.noaa.gov/res/Programs/ncrais/glansis.html>

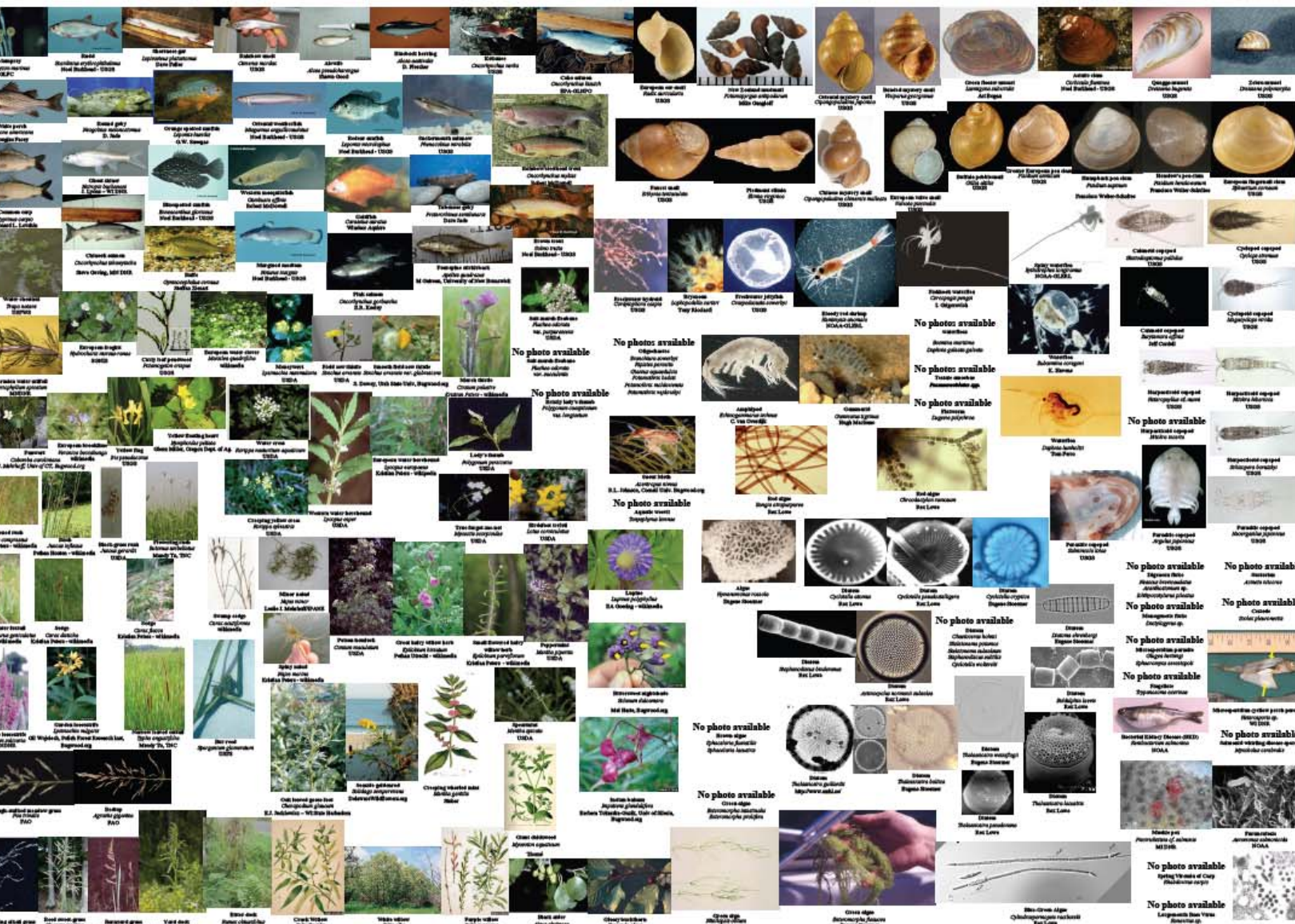


See <http://www.glerl.noaa.gov/res/Programs/ncaais/glansis.html> for more information.



Some of the ~~180~~ ~~181~~ ~~183~~ 185(?) Non-Native Species Established in the Great Lakes

(Pictures are NOT to scale; species list subject to change)



GLANSIS provides:

A one-stop source for information about non-indigenous species in the Great Lakes region!

Search Capability

- by scientific and common names,
- by Geographic areas (basins and lakes), and
- by major pathways of introduction and spread

Outputs

Tables of basic information which are sortable by

- name,
- taxonomy,
- origin,
- year of introduction, and
- status

Fact sheets including information on

- Taxonomy
- Identification
- Native and Invasive ranges
- Ecology and life history
- Means of Introduction
- Status
- Realized and potential impacts

Public domain photos

Interactive maps

Collection information including

- Location (state, county, watershed and/or latitude)
- Contact or reference
- Date
- Status
- Suspected pathway(s)

Bibliography of key references

Links to additional fact sheets and resources

GLANSIS Needs:

- Your verified collection information!

A database is only as good as the information contributed!

Reports can be sent to:
Dr. Rochelle Sturtevant
rochelle.sturtevant@noaa.gov

NOAA - GLERL
2205 Commonwealth Blvd
Ann Arbor, MI 48105

GLANSIS Database

Generate a NonIndigenous Species List

Select your criteria below

Portions of this database are still incomplete. Please be sure to check the [current status](#).

A list of nonindigenous species that matches your criteria will be generated.
Species with fact sheets will have links to the fact sheets.

Group	<input type="text" value="All"/>
Lake (HUC):	<input type="text" value="All Great Lakes Drainages"/> (seen on right)
Genus:	<input type="text"/>
Species:	<input type="text"/>
Common Name:	<input type="text"/>
Status	<input type="text" value="All"/>
Freshwater/Marine	<input type="text" value="All"/>
Pathway	<input type="text" value="All"/>
Exotic/Transplant:	<input type="text" value="All"/>
Sort by:	<input type="text" value="Taxonomic Group"/>
Results per page:	<input type="text" value="50"/>
<input type="button" value="Submit"/>	



Photo (from Fact Sheet)	Group ²⁾	Family	Scientific Name *	Common Name	Exotic / Native Transplant	Continent of Origin	Year First collected (as collected IUCN)	Status (as collected IUCN)
	Arthropoda	Crambidae	<u><i>Acentropus niveus</i></u>	(European) aquatic/water moth	Exotic	Europe	1927	established
	Protozoans	Acinetidae	<u><i>Acineta nitocras</i></u>	a suctorian ciliate	Exotic	Eurasia	1997	established
	Algae	Hemidiscaceae	<u><i>Actinocyclus normanii fo. subsalsus</i></u>	diatom	Exotic	Europe	1938	established
	Bacteria	Pseudomonadaceae	<u><i>Aeromonas salmonicida</i></u>	furunculosis, ulcer disease, erythrodermatitis	Exotic	Unknown	1902	established
	Plants	Poaceae	<u><i>Agrostis gigantea</i></u>	Redtop, black bent, water bentgrass	Exotic	Eurasia	1884	collected, established
	Plants	Betulaceae	<u><i>Alnus glutinosa</i></u>	Black alder	Exotic	Eurasia	1913	collected, established
	Plants	Poaceae	<u><i>Alopecurus geniculatus</i></u>	water foxtail, marsh meadow-foxtail	Exotic	Eurasia	1882	collected, established
	Fishes	Clupeidae	<u><i>Alosa aestivalis</i></u>	blueback herring	Native	North America	1981	established
	Fishes	Clupeidae	<u><i>Alosa pseudoharengus</i></u>	alewife	Native	North America	1868	established
	Fishes	Gasterosteidae	<u><i>Apeltes quadracus</i></u>	fourspine stickleback	Native	North America	1986	established
	Fishes	Gobiidae	<u><i>Apollonia (Neogobius) melanostomus</i></u>	round goby	Exotic	Eurasia	1990	established
	Crustaceans-Copepods	Argulidae	<u><i>Argulus japonicus</i></u>	parasitic copepod	Exotic	Asia	1988	established

Alosa pseudoharengus (Wilson 1811)

Common Name: alewife



Shawn Good

Identification: Whitehead (1985); Page and Burr (1991); Etnier and Starnes (1993); Jenkins and Burkhead (1994). The Alewife is a small herring with a dark dorsal side, bluish to greenish, and light sides with horizontal darker stripes.

Size: to 38 cm, but inland populations usually less than 25 cm

Native Range: Atlantic Coast from Red Bay, Labrador, to South Carolina; many landlocked populations (Page and Burr 1991).

Alosa pseudoharengus**Watersheds for which this species have been reported**

HUC 8 (red) are individual watersheds. HUC 6 (dark pink) are 'accounting units' which aggregate several watersheds and non-specific state records (light pink) aggregate whole state information. Pink shades are used only in cases where the records are insufficient to pinpoint the location more specifically. The map does not reflect status of the individual populations (established, reported, failed). Use the link below to access the collection records for more detailed information.

Specimen ID#	State	County	Locality	Year	HUC Number	Drainage Name	Status
33595	IL		Lake Michigan	1949	04060200	Lake Michigan	established
33673	IL		Lake Michigan	1956	04060200	Lake Michigan	established
33596	IL		Lake Michigan	1979	04060200	Lake Michigan	established
33570	IL		Lake Michigan	1985	04060200	Lake Michigan	established
34046	IN		Lake Michigan	1956	04060200	Lake Michigan	established
33824	IN		Lake Michigan	1985	04060200	Lake Michigan	established
33971	IN		northwest part of state (only Lake Michigan area?)	1992	04060200	Lake Michigan	established
158206	IN	Porter	Indiana Dunes National Lakeshore	1999	04040001	Little Calumet-Galien	established
35448	MI		Lake Huron	1933	04080300	Lake Huron	established
35576	MI		Lake Huron, about 40 mi from Rogers City; at a point about midway on a line drawn between Thunder Bay Island Light and Duck Island Light	1935	04080300	Lake Huron	established
35449	MI		Lake Michigan	1949	04060200	Lake Michigan	established
35426	MI		Lake Superior east end	1954	04020300	Lake Superior	established
35450	MI		Lake Superior	1955	04020300	Lake Superior	established
35384	MI		Lake Michigan	1956	04060200	Lake Michigan	established
35451	MI		Lake Superior	1985	04020300	Lake Superior	established
35447	MI		Lake Huron	1985	04080300	Lake Huron	established
35477	MI		Lake Michigan	1985	04060200	Lake Michigan	established
35372	MI		Lake Huron	1985	04080300	Lake Huron	established