

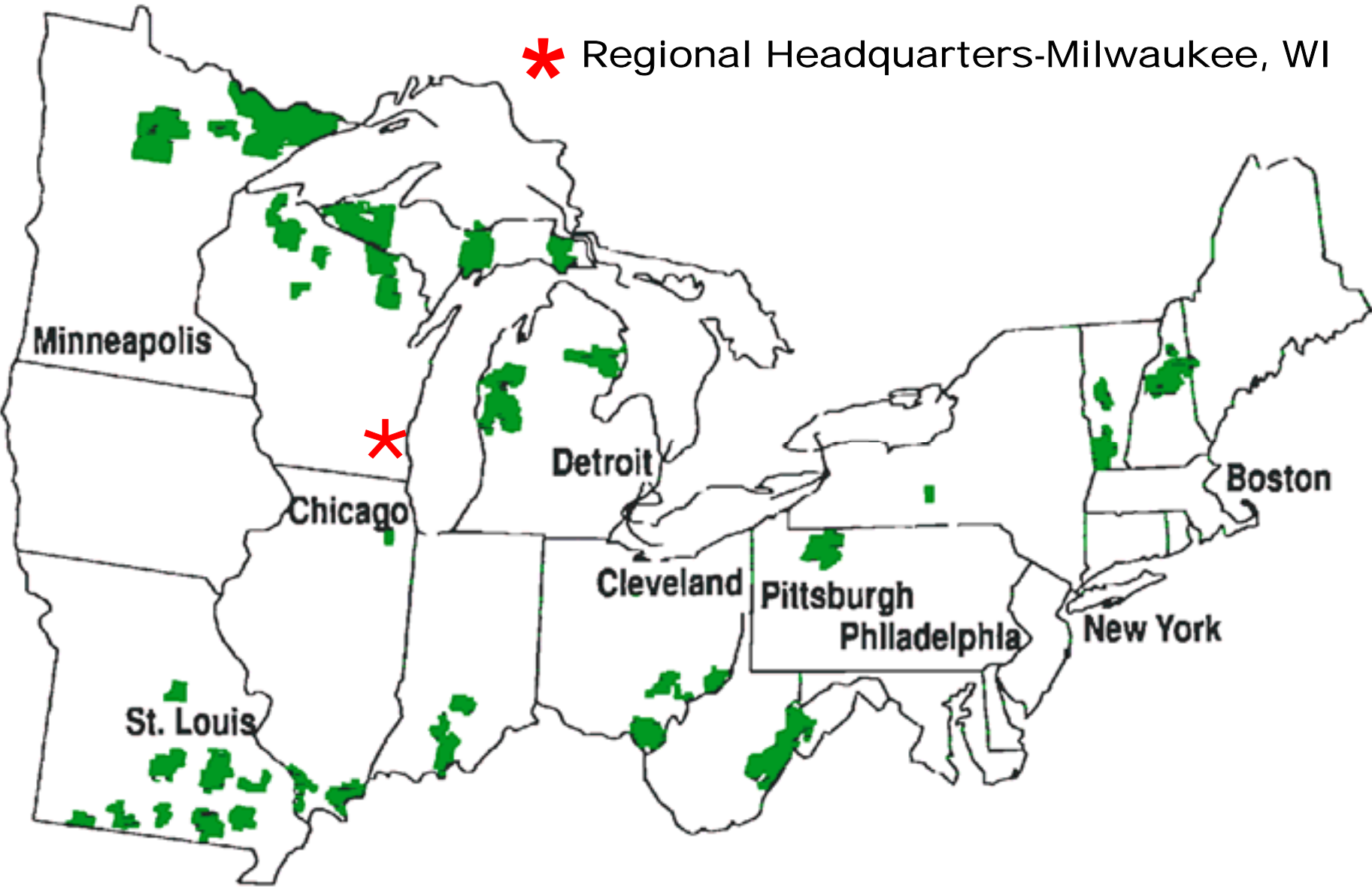


**ONLY YOU CAN PREVENT
Invasive Species....or
Smokey the Bear as a
Regional AIS Collaborator!**



**Nick Schmal
Fish and Aquatic Ecology
Program Leader
USDA Forest Service
Eastern Regional Office
Region 9**

Eastern Region (Region 9) of the USDA-Forest Service



* Regional Headquarters-Milwaukee, WI

Minneapolis

Chicago

Detroit

Cleveland

Pittsburgh

Philadelphia

New York

Boston

St. Louis

EASTERN REGION NATIONAL FORESTS

KEY FACTS

- Two million acres of wetlands
- 15,000 miles of streams
(68% of which contain trout and salmon)
- More than 10,000 lakes
- Half the nation's 45 million anglers
- Nearly 1,000,000 Total Lake Acres
- Over 300 fish species
- 68 crayfish species
- 46 RF Aquatic Sensitive Species

ANS Panels & Region 9 Forests

- **Great Lakes Panel:**

Chequamegon-Nicolet, Ottawa, Hiawatha, Huron Manistee, Superior, Finger Lakes NF's, Midewin Tall Grass Prairie

- **Mississippi River Basin Panel:**

Chippewa, Chequamegon-Nicolet, Ottawa, Shawnee, Mark Twain, Allegheny, Hoosier, Wayne and Monongahela NF's, Midewin Tall Grass Prairie

- **Northeast Panel:**

Green Mountain and White Mountain NF's

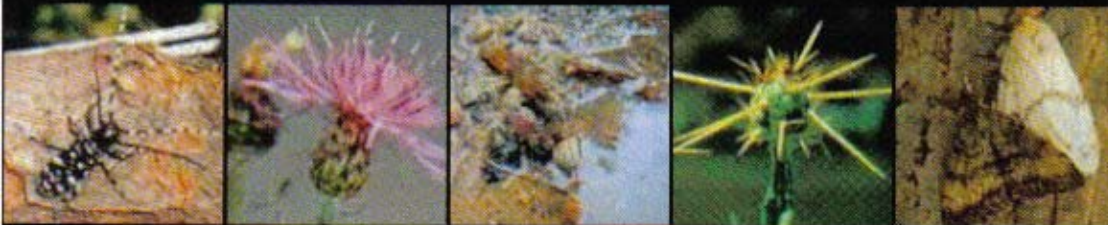
Forest Service Strategic Plan Goals



- Reduce risk from catastrophic wildland fire
- Reduce impacts from *invasive species*
- Provide outdoor recreation opportunities while sustaining natural resources, to meet demand.
- Help meet energy resource needs
- Increase watersheds that are in fully functional hydrologic condition.
- Conduct research and other mission-related work



National Strategy and Implementation Plan



for Invasive Species Management





Forest Service National Invasive Species Strategy

Program elements:

- Prevention
- Early detection/
rapid response
- Control/management
- Rehabilitation
/restoration

Overarching Themes:

- Partnerships and
collaboration
- Scientific basis
:research and
technology
- Communication/
education
- Organize for success
improve capacity,
streamline, funding

R9 NNIS Framework Purpose



“Provide an interdisciplinary framework to implement NNIS management programs on Eastern Region National Forests”

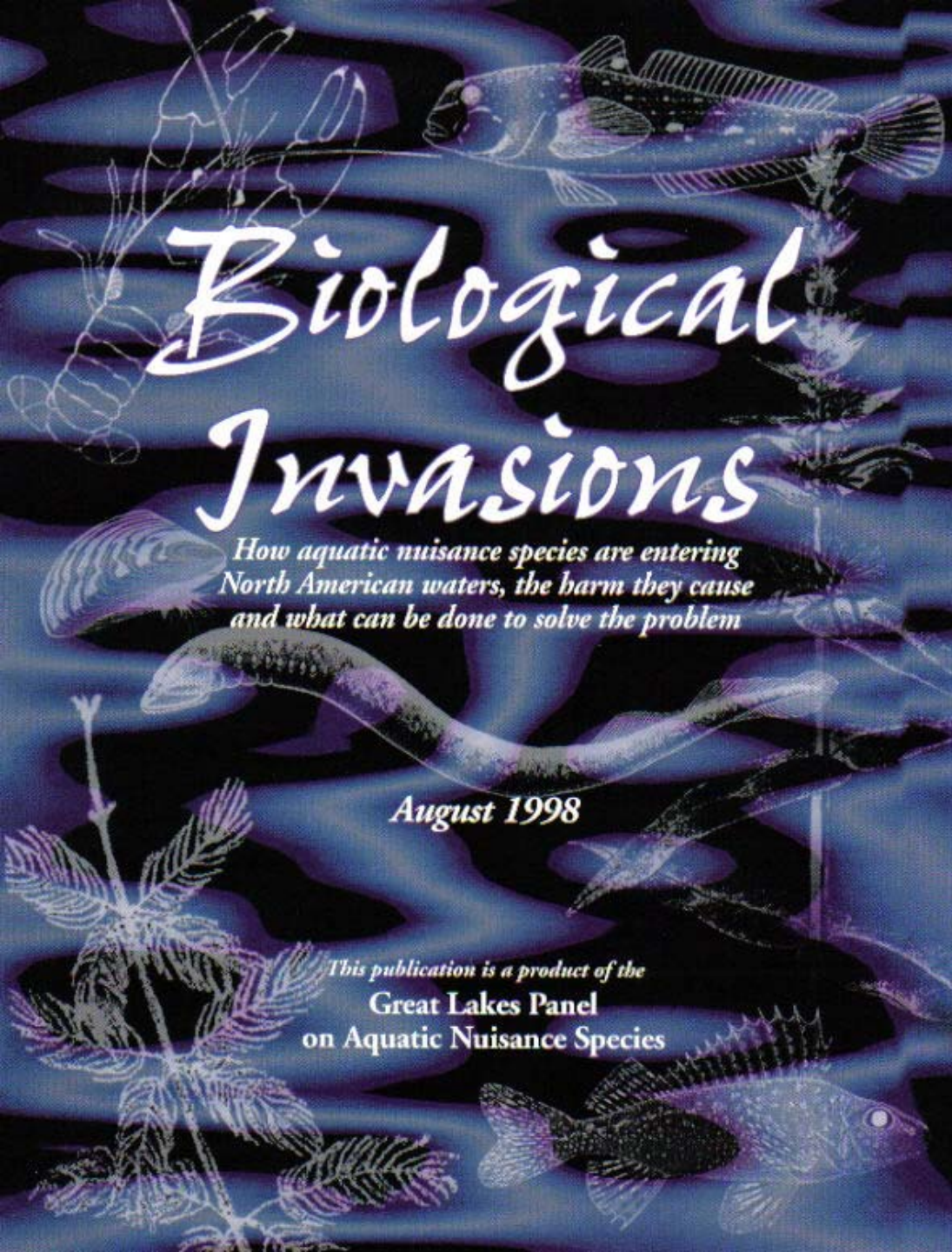


R9 Framework tiers off various existing direction...

- Executive Order 13112- Invasive Species (1999)
- Meeting the Invasive Species Challenge: National Invasive Species Mgmt Plan (2001)
- Stemming the Invasive Tide - Forest Service Invasive Species Strategy (1998)
- Forest Service Manual 2080
- State Laws and State Aquatic Nuisance Species Plans



Rusty crayfish



Biological Invasions

How aquatic nuisance species are entering North American waters, the harm they cause and what can be done to solve the problem

August 1998

This publication is a product of the Great Lakes Panel on Aquatic Nuisance Species



Partnerships
are
Important!!



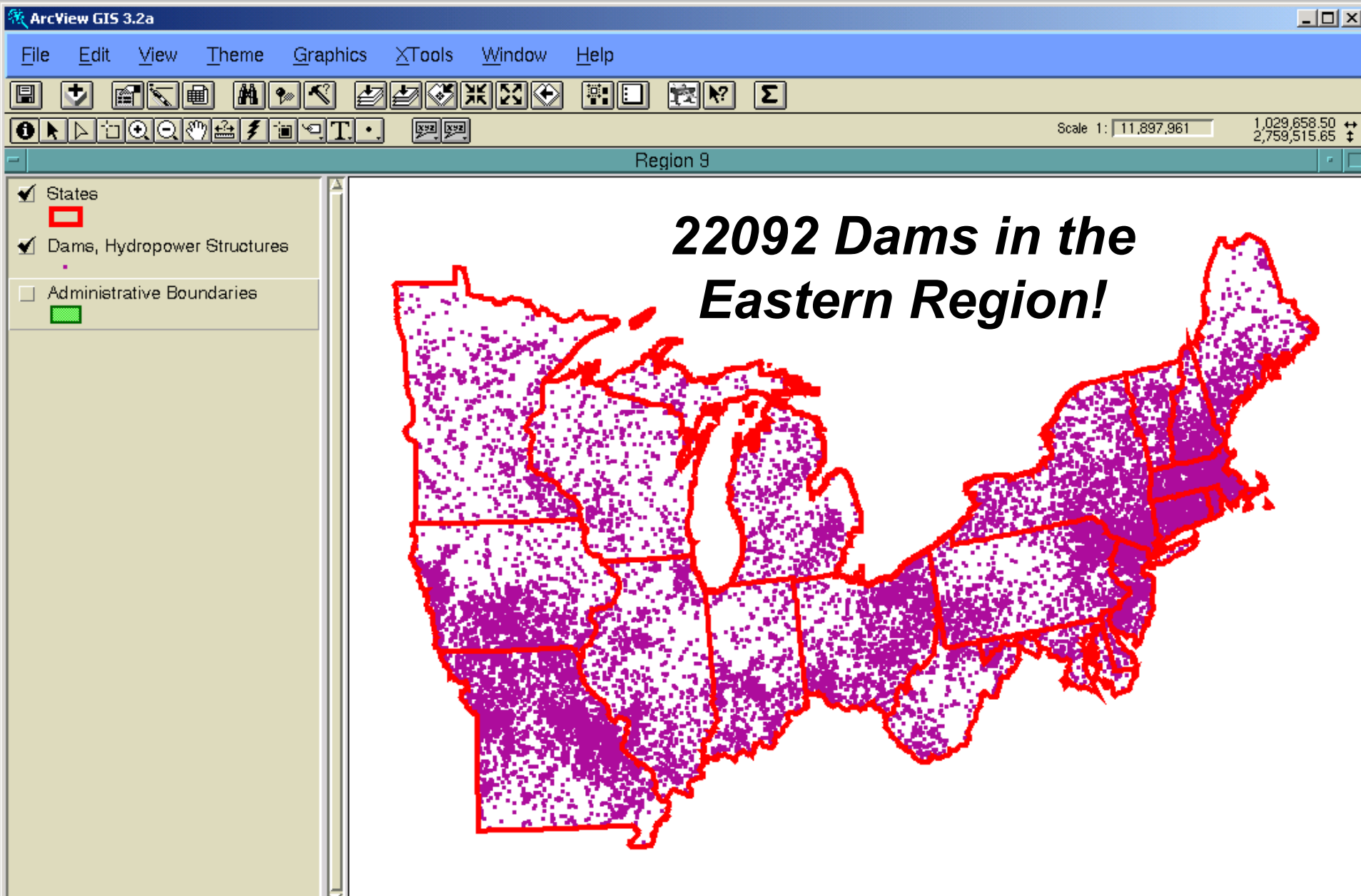


Conservation Education National Fishing Week Events

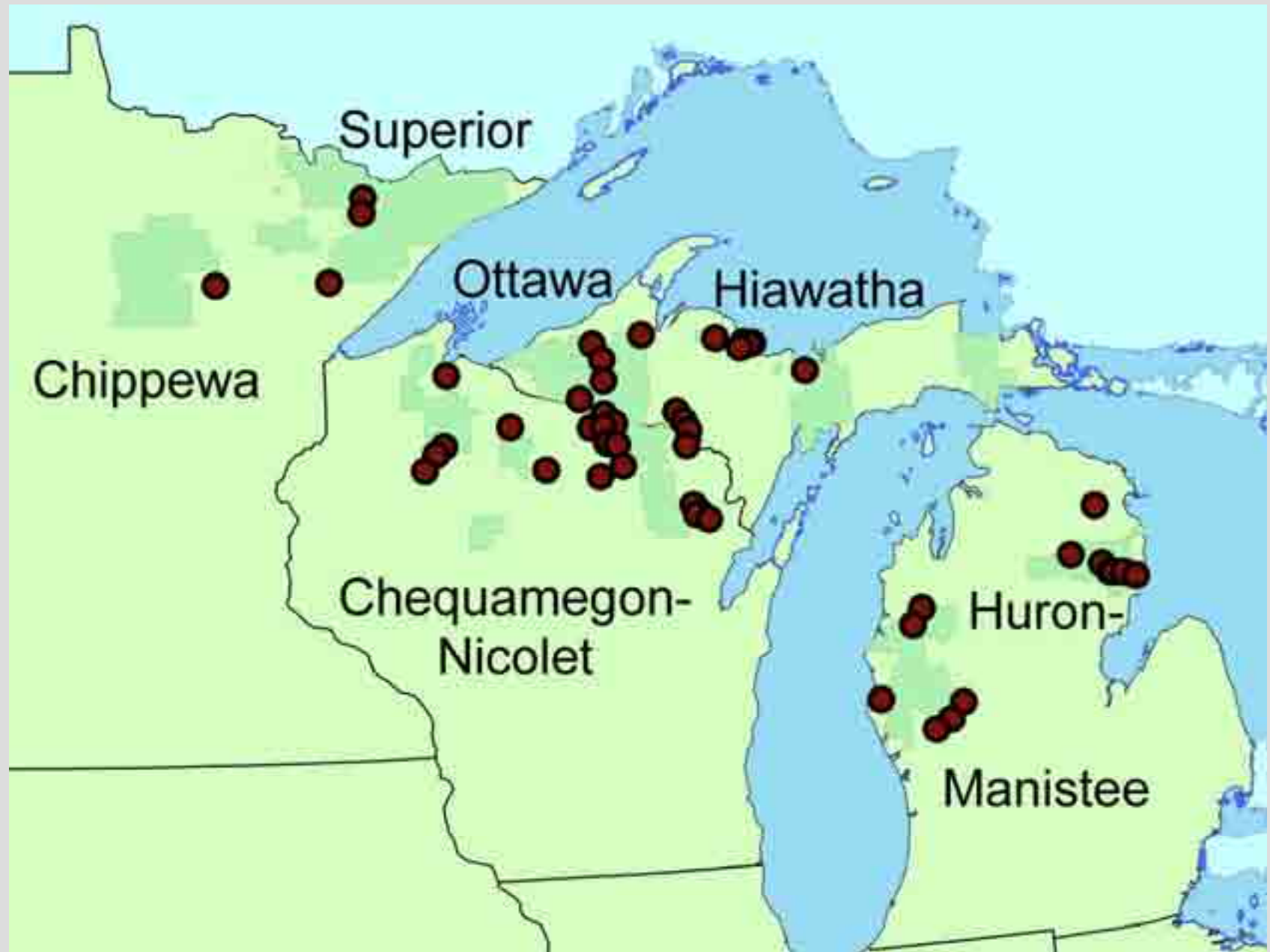


12 11:21 AM

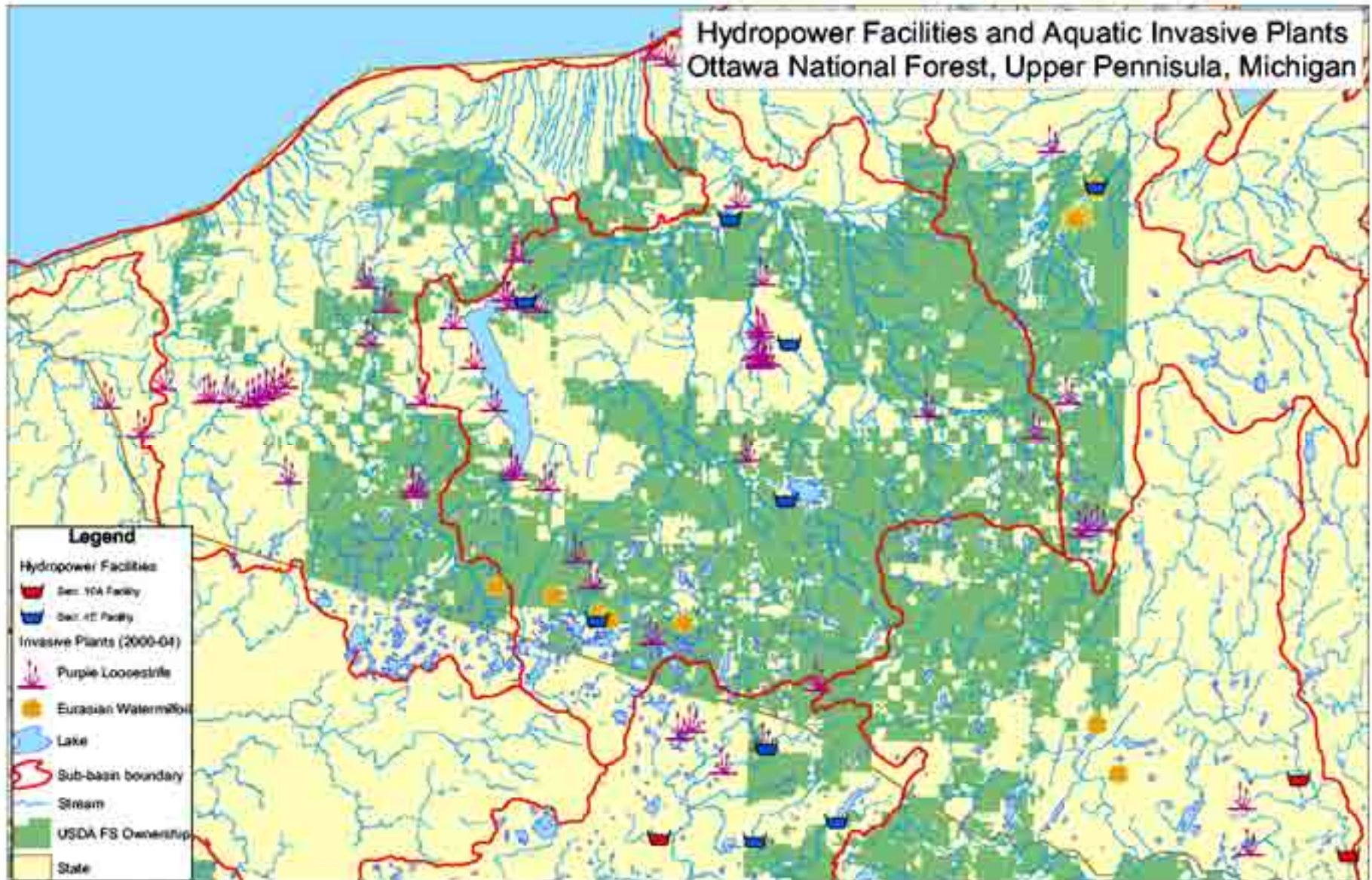
Eastern Region and State boundaries



Hydropower Sites in Upper Great Lakes on/near NFS Lands



Aquatic Invasive Plants at or near Hydropower Facilities



EXOTIC SPECIES ALERT

These waters contain *Eurasian Watermilfoil*.



This plant can spread very quickly from small leaf fragments. It can form dense mats that interfere with swimming, fishing, and boating.

Existing Barrier Removal-Or not?



- 29,931 System Road Miles
- 48,121 Culverts 5th HUC
- 13,822 Culverts NFS lands



QUESTIONS??

nschmal@fs.fed.us

<http://www.fs.fed.us/r9/wildlife/nnis/>