

National Wind Coordinating Collaborative

Katie Kalinowski, RESOLVE

May 7, 2008

www.nationalwind.org

Many Stakeholders, One Vision

Commercial wind-power markets that are environmentally, economically
and politically sustainable

Stakeholder Sectors

Electric utilities and their support organizations

State legislators

State utility commissions

Consumer advocacy offices

Wind industry

Environmental organizations

State and federal agencies

Overall NWCC Functions

Identify issues that affect the use of wind power

Establish dialogue among key stakeholders

Catalyze activities aimed at sustainable wind markets

Neutral Forum - Not an Advocacy
Organization



How Do We Operate?

Collaborative discussions
early



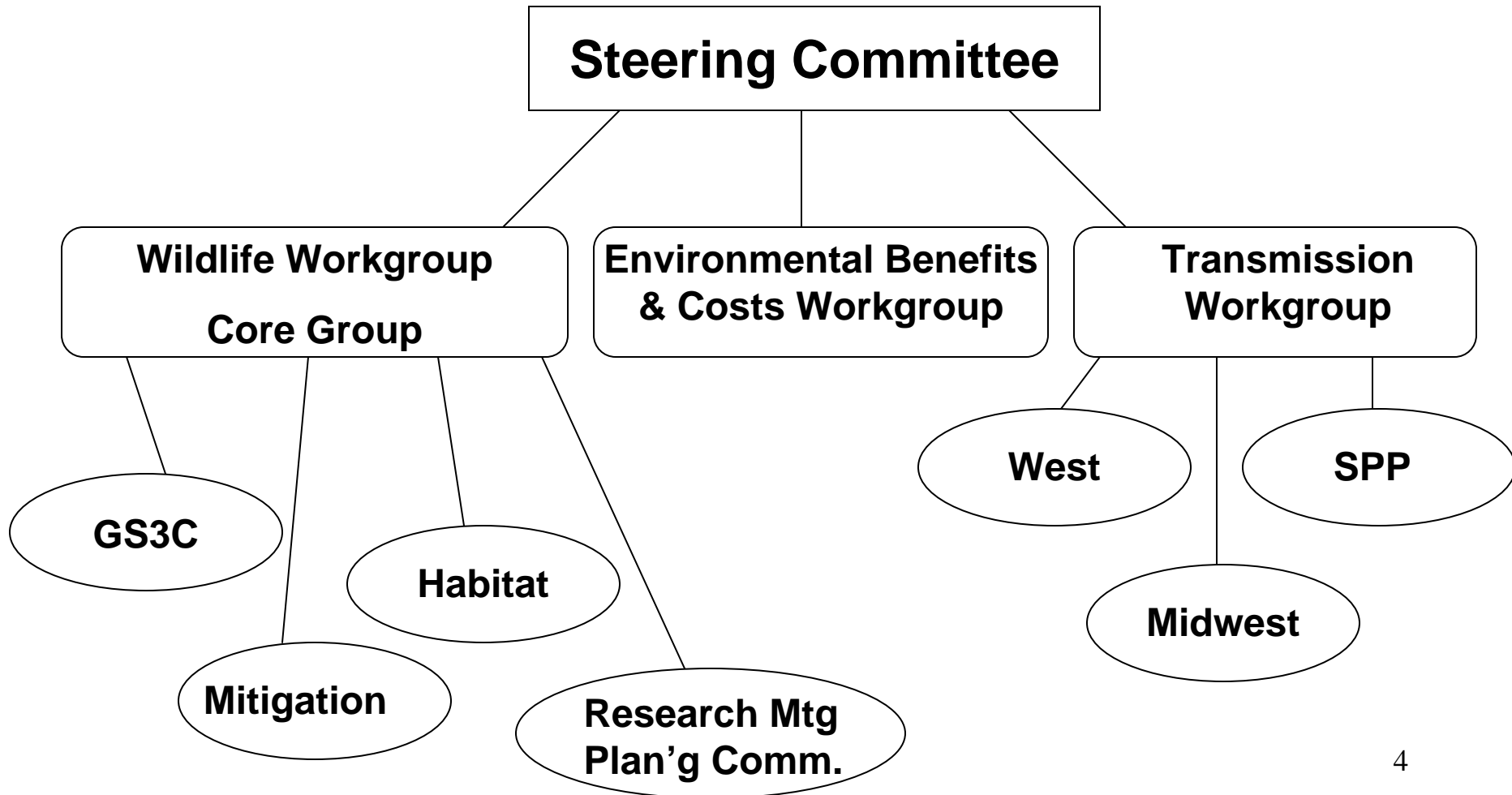
to
reduce



Adversarial
proceedings later

**Broad stakeholder involvement is
critical**

NWCC Structure





NWCC Transmission Workgroup Members*



WESTERN GOVERNORS' ASSOCIATION



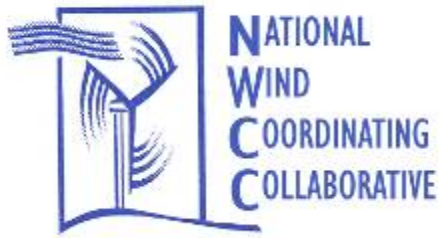
NATIONAL CONFERENCE of STATE LEGISLATURES

The Forum for America's Ideas



WESTERN RESOURCE ADVOCATES

* Representative of groups involved, not complete list



NWCC Transmission Workgroup Mission Highlights

- Ensure wind stakeholder engagement in transmission planning activities; develop and share solid information about wind
- Focus on regions with the greatest wind potential and the greatest transmission needs (currently the West, Midwest, and Southwest Power Pool regions); engage in national arena as well
- Encourage longer-term proactive planning that anticipates future transmission needs and likely locations of new wind generation
- Encourage the best use of existing transmission capacity
- Assure that wind power's unique characteristics are considered and that wind has fair and balanced access to the transmission grid

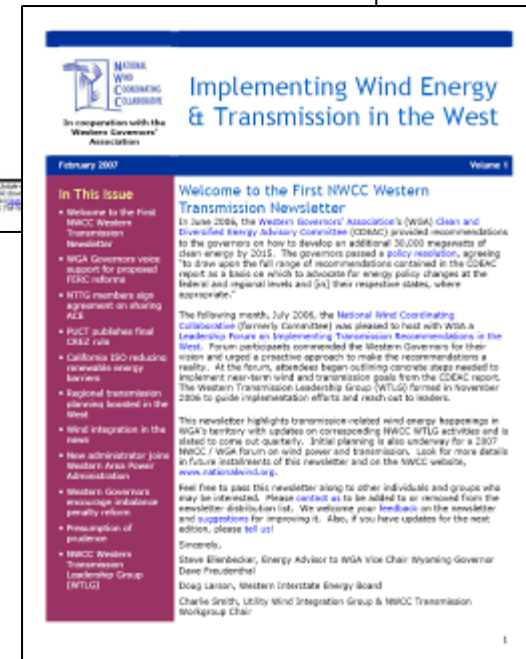
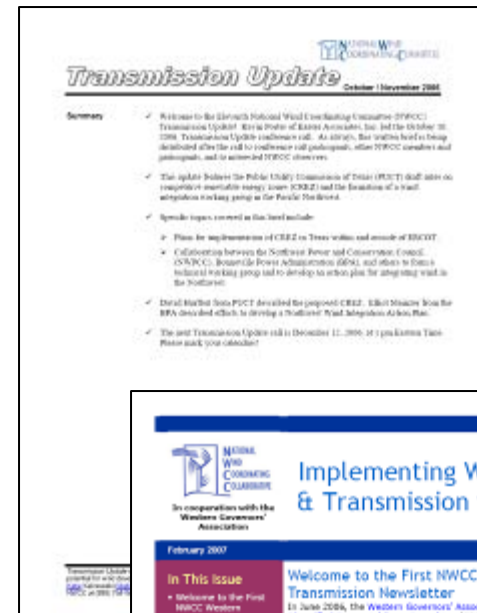
Regional Workshops

- Identify regions with greatest wind prospects and greatest transmission needs
- Conduct workshops and follow-up activities to facilitate regional alliances
 - Midwestern Governors Association and Midwest ISO
 - Midwestern Wind Energy: Moving It to Markets*, July 31 – Aug 1, Dearborn, MI
 - Western Governors' Association
 - Southwest Power Pool



Briefings and Newsletters

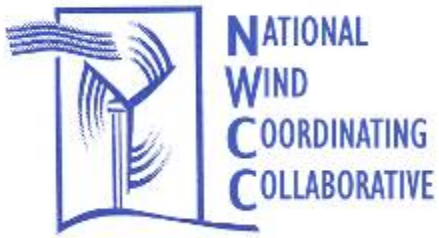
- Phone and web forums for timely education on key developments and issues
- Recent Webcasts and Transmission Updates
 - Interconnection Queues
 - NERC Long-Term Reliability Assessment & WestConnect Activities
 - State Transmission Infrastructure Authorities
 - PUCT CREZ docket & CAISO locationally constrained resources transmission category
 - FERC Order 890 Webinar
 - Transmission Products Webcast
- Quarterly newsletter *Implementing Wind Energy & Transmission in the West*



NWCC Wildlife Workgroup Project Overview

- NWCC is the only ongoing national technical forum for the full spectrum of stakeholders to identify wind-related wildlife concerns & discuss how to address them
- Challenges
 - Remaining questions about the potential impacts of wind power on wildlife and their habitats and the magnitude of impacts
 - Uncertainty about the predictive power of pre-construction study for evaluating post-construction impacts
- NWCC Response
 - Foster cross-sector conversation about uncertainties & research priorities
 - Document methods and metrics for studying wind energy & wildlife
 - Support initiatives for studying wind-wildlife interaction & provide opportunities to share results
 - Develops products that have buy-in of all key stakeholders





NWCC Wildlife Workgroup Members*



NATIONAL CONFERENCE
of STATE LEGISLATURES
The Forum for America's Ideas



WESTERN RESOURCE
ADVOCATES

Canadian Wildlife Service

* Representative of groups involved, not complete list

Approach: Improve Science



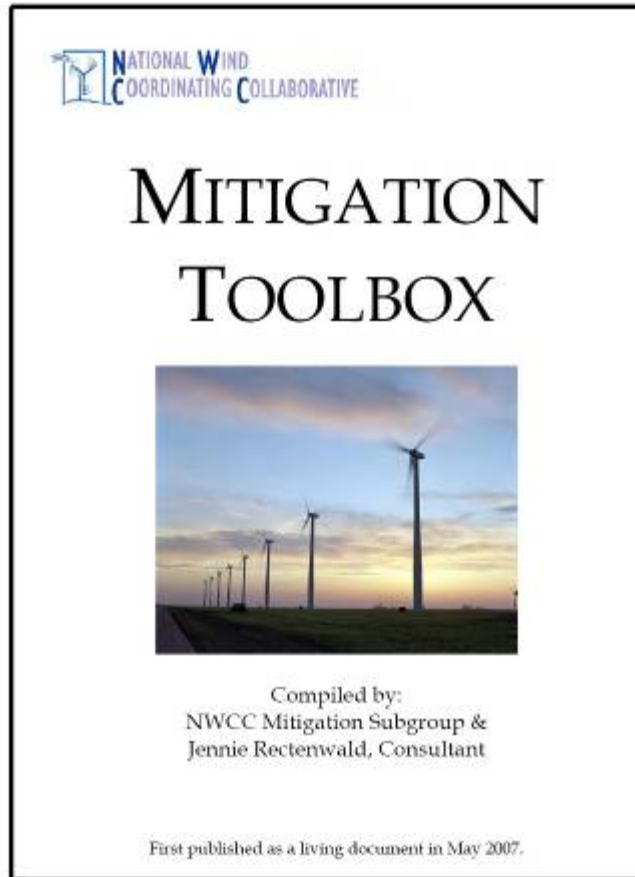
- Dialogue through focused subgroup work leading to:
- Peer Reviewed Products
 - Biennial Research Meetings
 - Research and Policy Update Calls/Webcasts
 - Wildlife Activities & Events Table
 - Website

NWCC Wildlife Research Meetings

- 6th meeting held Nov 14-15, 2006 in San Antonio, TX, convening U.S. and international wildlife and wind power researchers, and other interested stakeholders, to discuss the state of the science; proceedings available online at <http://www.nationalwind.org/events/wildlife/2006-3/proceedings.pdf>
- Planning for 7th meeting has begun
 - October 27 - 30, 2008; Milwaukee, WI
 - Request for abstracts; accepting abstracts until June 30th
 - Topics will include: wind energy policy and deployment; direct impacts to birds & bats; habitat and behavioral impacts; and research and mitigation techniques & technology



Mitigation Toolbox



- A “living” resource document providing mitigation policies, guidelines, and research that are directly or indirectly applicable to the wind industry
- **Purpose:** To provide direction for future wind development efforts by providing an assortment of mitigation measures that can be used in minimizing or eliminating negative impacts to wildlife
- Available on the NWCC website; subgroup establishing process for submitting updates
- Online at [http://www.nationalwind.org/publications/wildlife/Mitigation Toolbox.pdf](http://www.nationalwind.org/publications/wildlife/Mitigation_Toolbox.pdf)

Grassland / Shrub Steppe Species Collaborative (GS3C)

- 4-year, \$890K study on *Effects of Wind Power on the Demography and Population Genetics of the Greater-Prairie Chicken*
- Critical literature review on avian grassland/shrub steppe species and wind projects (*on NWCC website*)
- Grassland songbirds monitoring protocol, (*on NWCC website*)
- GS3C Overview at http://www.nationalwind.org/workgroups/wildlife/gs3c_overview.pdf



Habitat

- Subgroup hosting webcasts on habitat in 2008 and will develop a session on habitat for the Wind Wildlife Research Meeting in October.
 - Texas Habitat Initiatives Webcast, Mar 2008 - Heather Whitlaw, TX Parks & Wildlife Dept., described state study initiatives examining lesser prairie chicken habitat and grassland ecology in relation to wind energy development. Summary and presentation on the NWCC website.

Completed in 2007

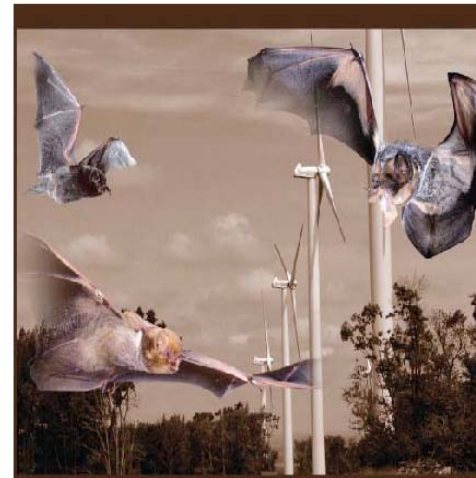
Nocturnal Methods & Metrics

Created a companion document to the existing *Studying Wind Energy/Bird Interactions: A Guidance Document* with expanded information on methods & metrics for nocturnal species

Assessing Impacts of Wind-Energy Development on Nocturnally Active Birds and Bats: A Guidance Document

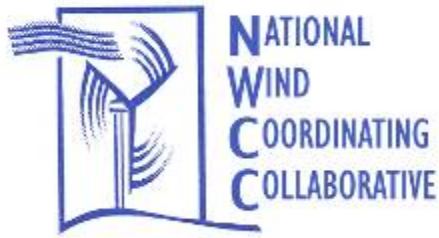
http://www.nationalwind.org/pdf/Nocturnal_MM_Final-JWM.pdf

Assessing Impacts of Wind-Energy Development
on Nocturnally Active Birds and Bats:
A Guidance Document



Thomas H. Kunz, Edward B. Arnett, Brian M. Cooper, Wallace P. Erickson, Ronald P. Larkin, Todd Mabee, Michael L. Morrison, M. Dale Strickland, and Joseph M. Szewczak

Journal of Wildlife Management 71(8): 2449–2486; 2007



New NWCC Activity.... Environmental Benefits and Costs Workgroup

- The initial purpose of the workgroup will be to create a forum where NWCC members and other leaders can learn about the full array of environmental analyses of wind power. This forum will provide a platform to:
 - Identify existing reputable studies and information that address the environmental effects of wind power;
 - Learn about how wind is characterized in the studies, what methods were used, and the credibility of the results;
 - Identify information needs, study gaps, and possible collaborations;
 - If appropriate, develop recommendations to advance further useful, objective studies that document environmental benefits and costs of wind power and responsible use of study results; and
 - Learn about what kinds of studies or models have been developed that compare environmental effects of wind power and other energy generation technologies and, where appropriate, identify how wind development compares with other energy generation.

Who to Contact

- Katie Kalinowski: kkalinowski@resolv.org
- Abby Arnold: aarnold@resolv.org
- Taylor Kennedy: tkennedy@resolv.org

www.nationalwind.org