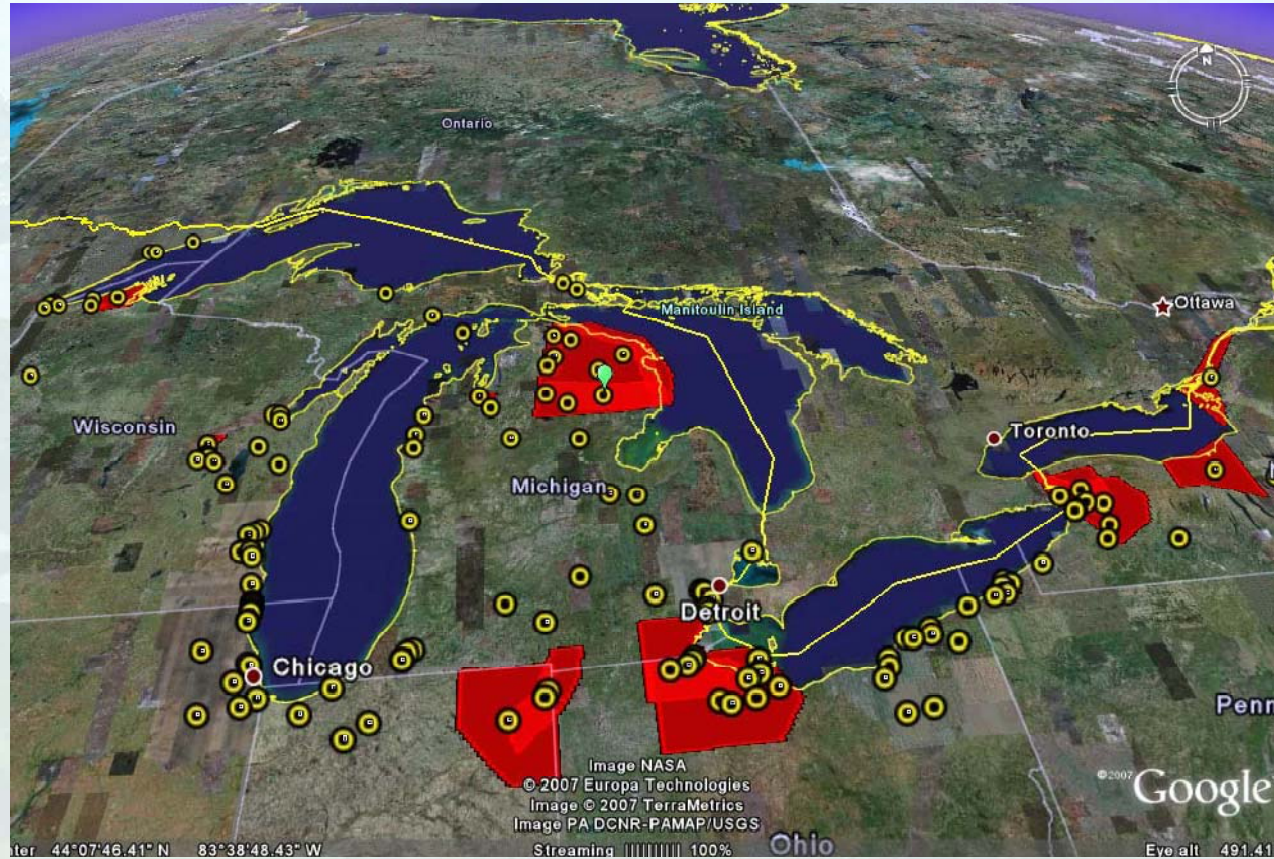


GLRC Habitat/Species Subcommittee Restoration/Protection Web Tools



An aerial photograph of a winding river flowing through a lush green landscape. The river meanders across the terrain, creating a complex pattern of curves and loops. The surrounding land is covered in dense vegetation, with varying shades of green. In the background, a line of trees or a distant shore is visible under a pale, hazy sky. The word "Background" is superimposed in the center of the image in a large, black, sans-serif font.

Background

Web Tools Purposes

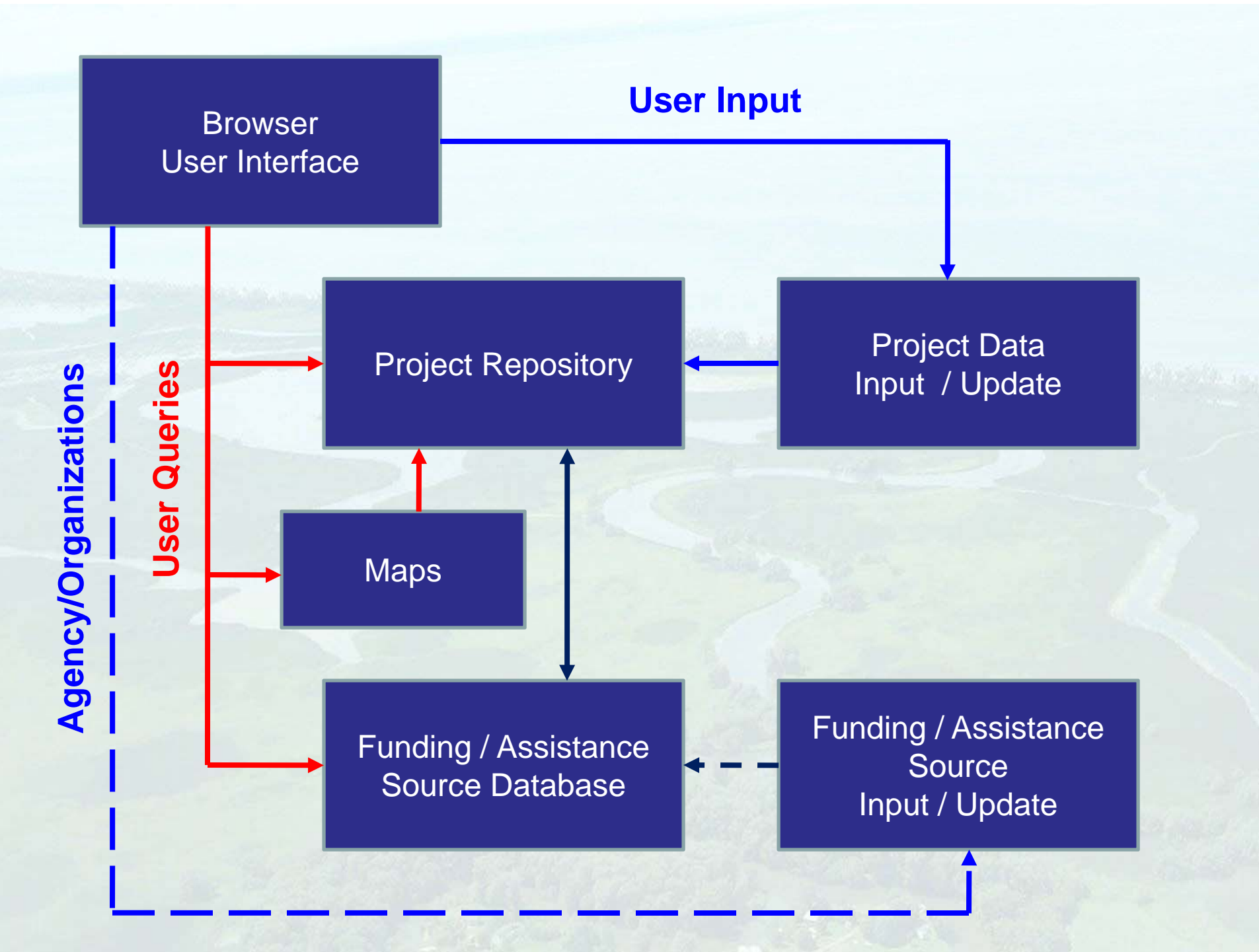
- Web-based entry/query tools designed to collect information about potential restoration projects and applicable funding / assistance programs
- Three key objectives:
 - Enhance collaboration between potential project sponsors at all levels of government to advance projects from one phase to the next
 - Provide consistent and comprehensive information to help agencies to prioritize resource allocations
 - Help define unmet funding needs under specific authorities to advance advocacy efforts by the Great Lakes Commission

Web Tools Features

- Consistent, comparable data and information about habitat protection and restoration projects across a state and/or entire Great Lakes basin
- Version 1.0 of the tools has about 240 prospective projects and 130 funding sources identified
- Version 2.0 includes improved “look and feel,” project benefit assessments, greater emphasis on project phases, enhanced query capabilities and a link between projects and most likely funding sources

An aerial photograph of a river delta, showing a large body of water branching into several smaller channels that flow through a green, forested landscape. The text "Components of Web Tools" is overlaid in the center of the image.

Components of Web Tools



An aerial photograph of a river delta system, showing a main river channel that branches out into several smaller channels and ponds. The surrounding land is a mix of green fields and dense forests. The text "Project Repository" is overlaid in the center of the image in a bold, black, sans-serif font.

Project Repository

Online Project and Funding Databases



Habitat/Species Subcommittee Protection/Restoration Web Tools

Search Projects

Map Viewer

Login

Register

Welcome to the Great Lakes Habitat / Species Subcommittee's web-based tools. The information contained in the project repository and funding assistance databases are being used to promote more integrated and comprehensive restoration activities across the region.

The details contained in these web tools are updated by a wide variety of potential project collaborators who are working to advance the Great Lakes Regional Collaboration Strategy report published in 2005. The information collected in these databases will be shared between various project collaborators to promote advancement of common habitat restoration goals. This information also will be used by various fundings and assistance sources to prioritize resource allocation decisions. Your input to this collaborative process will help the Great Lakes community to improve efficiencies and achieve results more rapidly.



US Army Corps
of Engineers



U.S. Fish &
Wildlife Service



<http://gis.glin.net/habitat>



Project Entry – Tabbed Structured



Projects

My Projects

Enter New Project

Full Project Database

Query the Database

Download the Database

Map Projects

Demo Projects

Home

Contact

Logout

Basic Information | Partners | Geography | Benefits | Costs | Other | Funding Match

[save](#) | [reset](#) | [help](#)

Title

Official title of project, inclusive of location and type of restoration work being done. Title limited to 255 characters.

Example

Abstract

Brief narrative summary of the project. Abstract limited to 6000 characters.

Example

Project Type

Select primary function

- Restoration/Rehabilitation/Creation ?
- Enhancement/Improvement ?
- Protection ?
- Other (eg education, monitoring, research) ?



Input Tabs:

Basic Information

Project Partners

Geographic Coverage

Anticipated Benefits

Anticipated Costs

Other Details (Monitoring Needs, etc.)

Suggested Funding or Assistance Sources

Project Phases

Proposed - These projects should be part of a formal plan, grant application, or other official document and must include specified geographic areas, restoration objectives and identified anticipated benefits.

Planning Initiated – A formal planning study is underway but not yet complete

Design Initiated – Engineering design work has begun and/or non-structural preparations (land acquisition, conservation easements, biologic methods) are being investigated

Preparations Completed - Planning/design activities for the project have been completed but no on-the-ground restoration activities have begun.

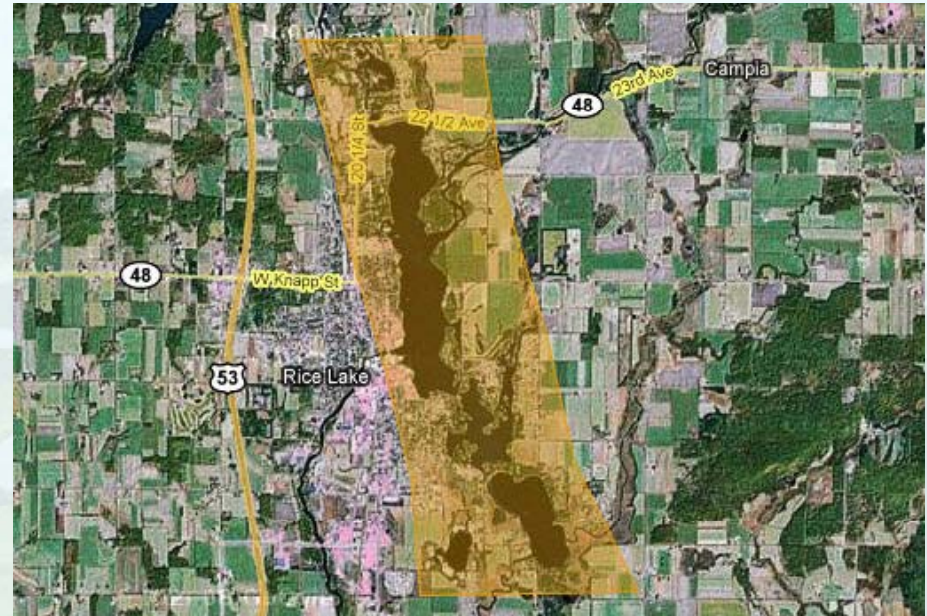
Implementation Started - On-the-ground protection or restoration activities have begun

Post-Completion - On-the-ground implementation activities such as major construction and planting are completed. Project monitoring, adaptive management, and other project management activities may be ongoing.

Geographic Coordinate Capture Tool

Automatically harvests:

- State
- County
- Township
- Congressional District
- Project acreage
- 8-digit watershed code
- NHD line segment
- Current land cover/habitat types
- Wetlands mapping (NWI, etc.)
- Soil types
- Rare, unique or protected species or habitats
- Part of TNC Conservation Blueprint
- Other available GIS features



Rice Lake, WI

An aerial photograph of a river delta system. The river branches out into several smaller channels, creating a complex network of waterways. The surrounding land is a mix of green fields and dense forests. In the background, a large body of water, possibly a bay or a large lake, is visible under a clear sky. The overall scene is a natural, undisturbed landscape.

Funding / Assistance Sources

Great Lakes Funding Programs

ID **Program name:** **Agency information:**

Program description: **Statutory authority:**

Geographic focus:

Project activities: *Check all that apply.*

<input type="checkbox"/> Aquatic invasive species	<input type="checkbox"/> Habitat restoration/improvement	<input type="checkbox"/> Public information	<input type="checkbox"/> Toxic pollutants
<input type="checkbox"/> Areas of concern / sedimentation	<input type="checkbox"/> Indicators and information	<input type="checkbox"/> Research/Monitoring	<input type="checkbox"/> Other
<input type="checkbox"/> Great Lakes coastal health	<input checked="" type="checkbox"/> Nonpoint source pollution	<input type="checkbox"/> Sustainable development	
<input checked="" type="checkbox"/> Habitat conservation and species management	<input checked="" type="checkbox"/> Habitat protection	<input type="checkbox"/> Terrestrial invasive species	

Financial Information

Applicant eligibility:

Funding authorization:

Award cap:

Funding authorizations are contained in statutory language and reflect the maximum amount that can be appropriated. Actual monies appropriated to carry out activities under a statute vary depending on budget constraints and are often less than the authorized amount.

Match required

Match amount (%):

In-kind Match:

In-kind property

In-kind services

2003-2006 Average Annual:

Expenditures:

Number of projects:

Deadlines:

Application process:

Assistance type:

Selection process:

Program notes:

[Save](#) [Add a Program](#) [Exit](#)

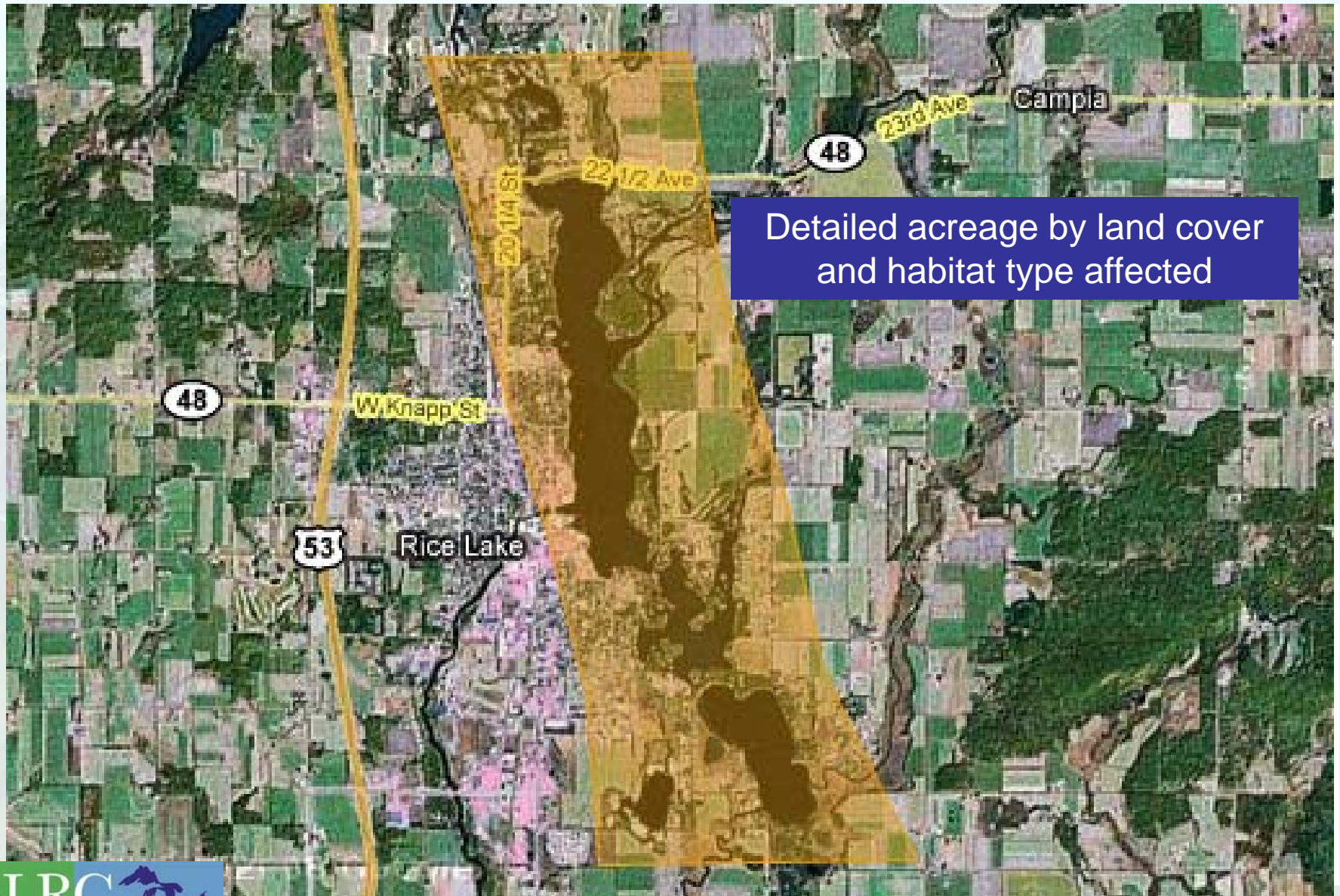


An aerial photograph of a meandering river flowing through a lush green landscape. The river winds in a series of loops and curves across the terrain, which is covered in dense vegetation. The background shows a hazy horizon under a light sky.

Database Queries

1. Keyword Searches
2. Web Mapping Tool

Map Queries

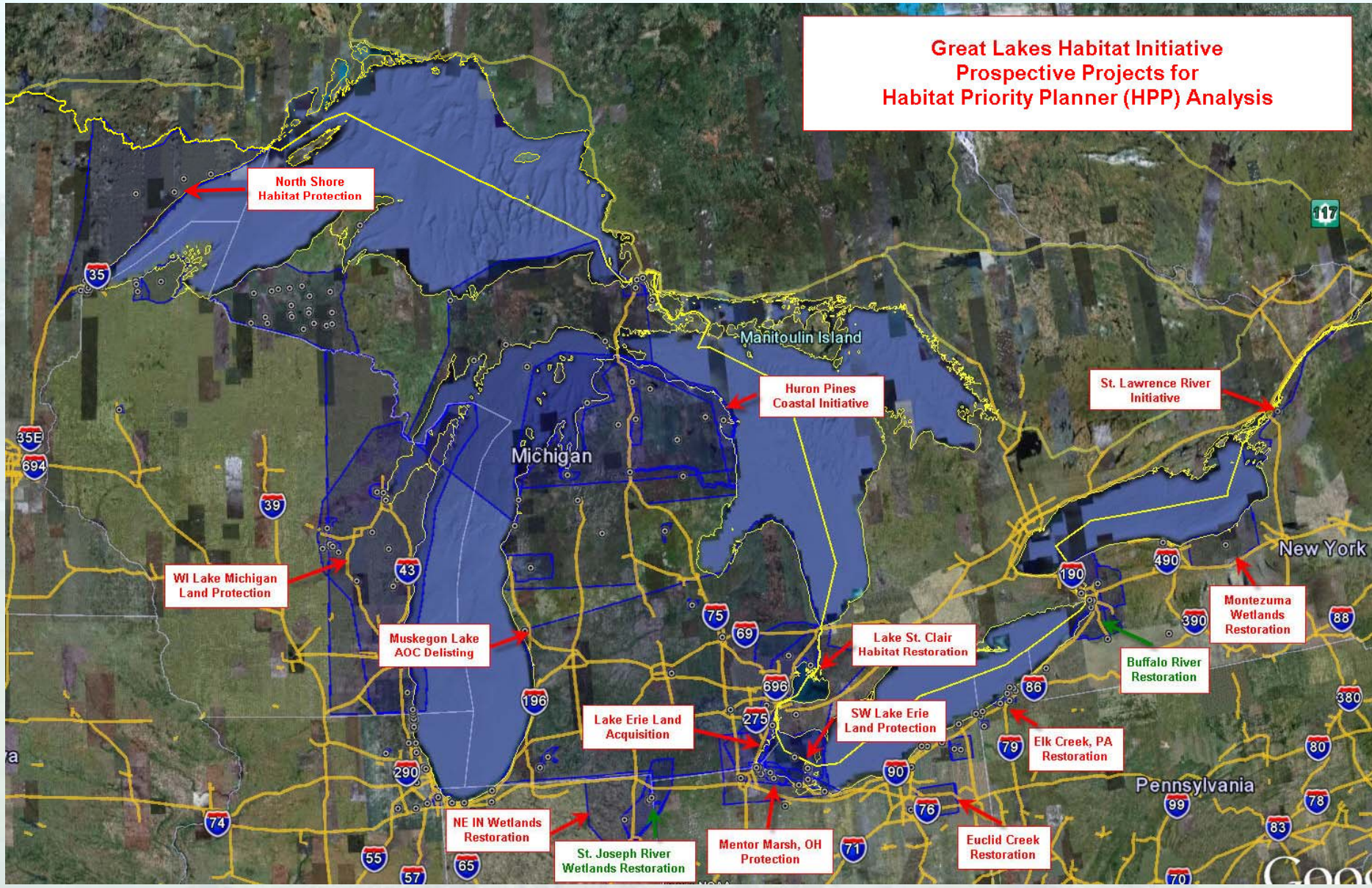


Detailed acreage by land cover and habitat type affected

Follow-On Activities

- Continue to improve ease of use
- Add linear feature capability (e.g. dam removal)
- Improve acreage estimation for end targets
- Seek continued support from states, tribes and NGOs to enter new projects and update entries
- Promote federal agencies to enter projects and utilize database in resource allocation decisions
- Link to higher resolution online GIS resources
- Support broader wetlands tracking accounting system

**Great Lakes Habitat Initiative
Prospective Projects for
Habitat Priority Planner (HPP) Analysis**



An aerial photograph of a river delta system. The river branches out into several smaller channels, creating a complex network of waterways. The surrounding land is a mix of green fields and dense forests. In the background, a large body of water, possibly a bay or a large lake, is visible under a hazy sky. The overall scene is a natural landscape with significant water features.

Questions / Comments???