

# Stepping Down the GLRC: Restoration Strategies at the State Level

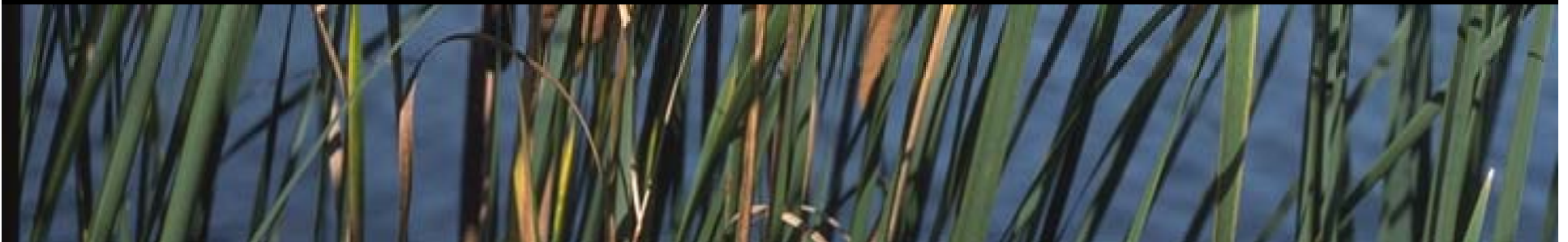
Ducks Unlimited, Inc.  
Great Lakes/Atlantic Regional Office  
Ann Arbor, Michigan



# Great Lakes Regional Collaboration Strategy to Protect and Restore the Great Lakes

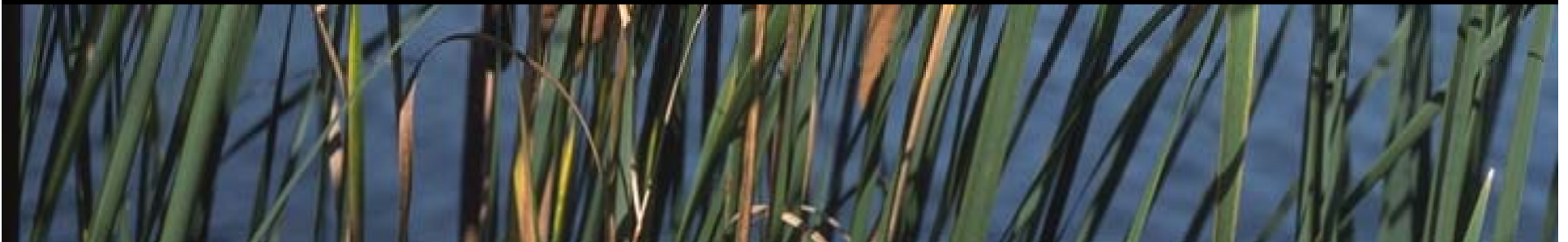
Most Comprehensive Great Lakes Restoration and Protection Plan

- Documents the most critical problems
- Recommends tangible solutions
- Identifies programs to implement those solutions
- Recommends the funding needed for those programs to succeed



# Great Lakes Regional Collaboration Restoration Strategy

- Since December 2005
  - Substantial progress through existing programs
  - Not necessarily led by the plan
- Challenge
  - Converting the plan into on-the-ground results
- Step-down implementation of the Strategy
  - Need some organizational structure to coordinate efforts, roles, and initiatives among federal, state, and local agencies and private organizations in the basin
  - Empower local efforts
  - Many options for how this might be done
  - Consider the “Joint Venture Model”



# “Joint Venture Model”



- North American Waterfowl Mgmt Plan (NAWMP)
  - International plan with broad goals and objectives
  - Identified focus areas
  - Plan Committee composed of stakeholders (USFWS)
- Joint Ventures
  - Stepped-down planning to regional focus areas
  - Guided by a Management Board composed of stakeholders
- Local implementation
  - Various self-directed efforts to achieve JV goals at the local level
  - Empowered to build partnerships, seek funding and *get things done!*

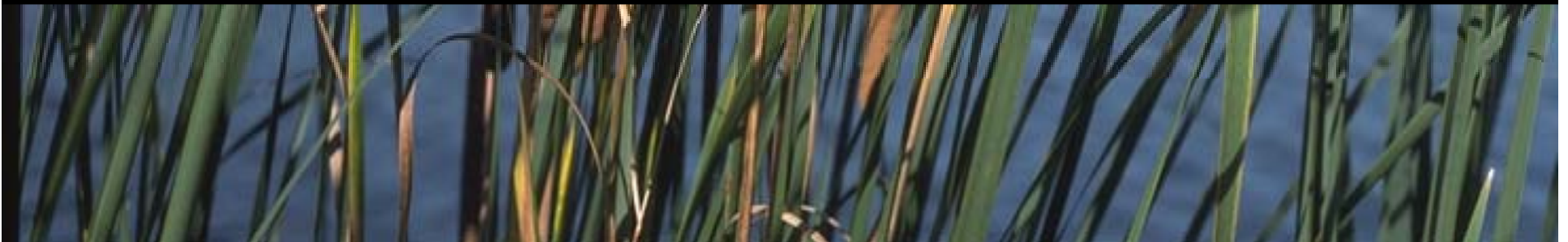
# Synergy

- NAWMP Plan provides the overall vision
- Each JV Implementation Plan provides the roadmap
- Individual focus area Implementation Committees rally the local interests to organize funding and actually get the habitat on the ground
- Accountability exists back to the overall plan

**This serves as one possible model for how to successfully achieve implementation of the GLRC restoration strategy.**

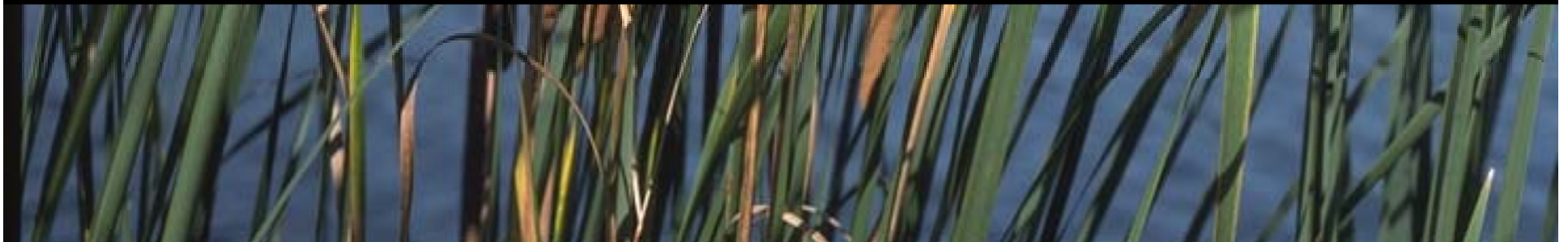
# GLRC Missing Link

- Establish a successful mechanism to step down implementation of the GLRC restoration strategy
  - Broad support and buy-in
  - Cooperation and collaboration
  - Encourage increased public and private investment
  - *RESTORE THE GREAT LAKES!!*



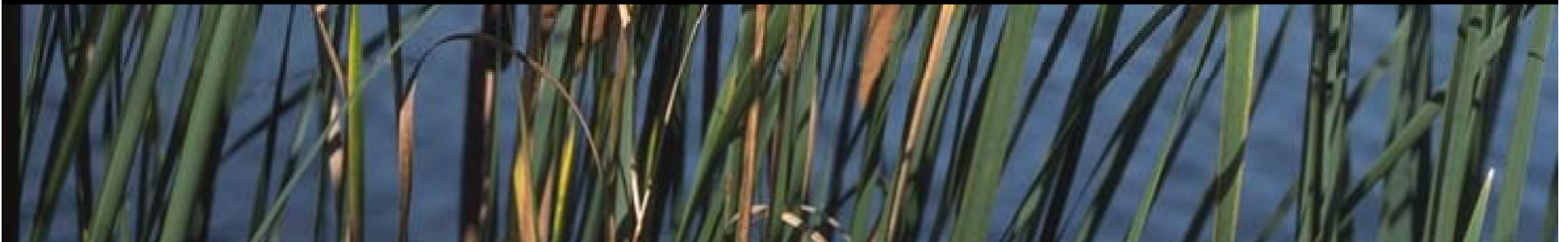
# Michigan Great Lakes Restoration and Protection Initiative

- The GLRC Strategy reflects the efforts needed throughout the Great Lakes basin
- The Michigan Initiative provides specific direction to address the recommendations **of the GLRC in Michigan**
- Cooperative effort led by
  - MDEQ Office of the Great Lakes
  - Michigan United Conservation Clubs
  - Lt. Governor Cherry
- Steering Committee of diverse, interested stakeholders



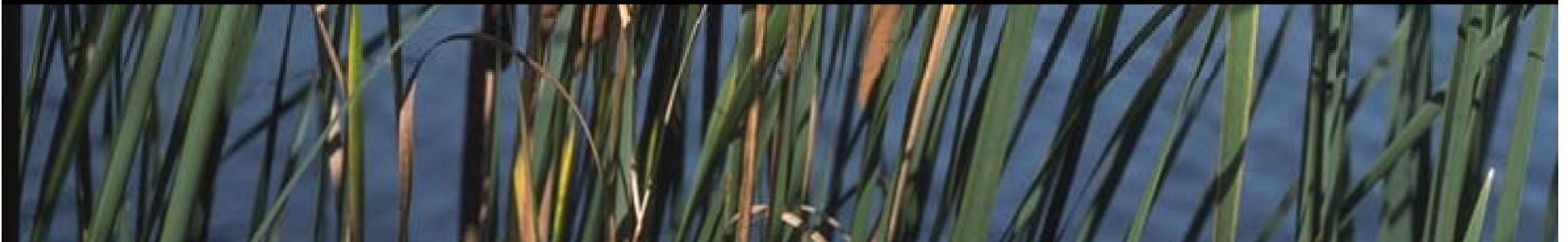
# Desired Result

- A process where Michigan stakeholders can all work together collectively and collaboratively towards restoring and protecting the Great Lakes



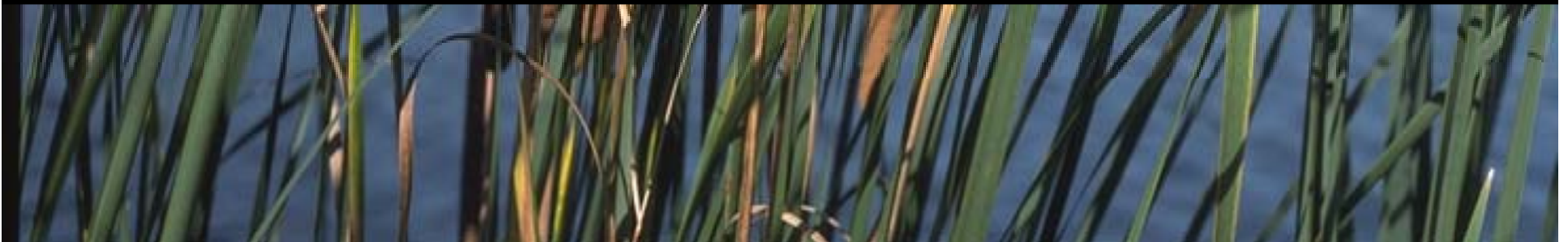
# Outcomes

- Integrated collaborative plan for moving Michigan forward toward restoring and protecting the Great Lakes
- Priority restoration and protection programs identified along with funding sources
- Action plans still to be developed

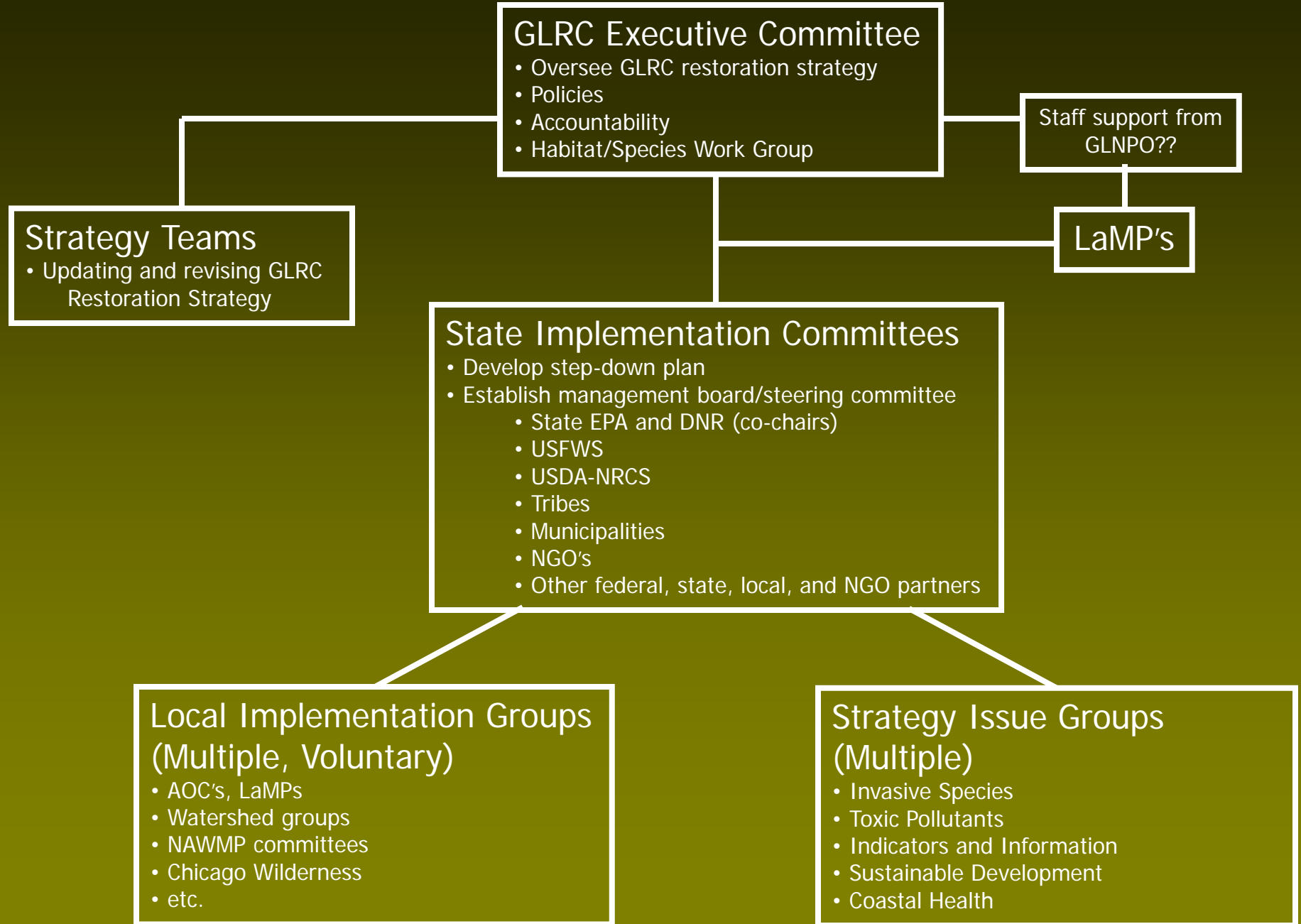


# Critical Needs

- Continued emphasis on the follow-up implementation to ensure action on the ground through local efforts
- Assign accountability for end results
  - State agency leaders
- Engage a steering committee to shepherd the process



# Organizational Proposal



Together we can achieve the  
Vision of a restored, sustainable  
Great Lakes ecosystem.



# Thank you!



Ducks Unlimited, Inc.  
Great Lakes/Atlantic Regional Office  
Ann Arbor, Michigan  
*734-623-2000*



[www.ducks.org](http://www.ducks.org)

