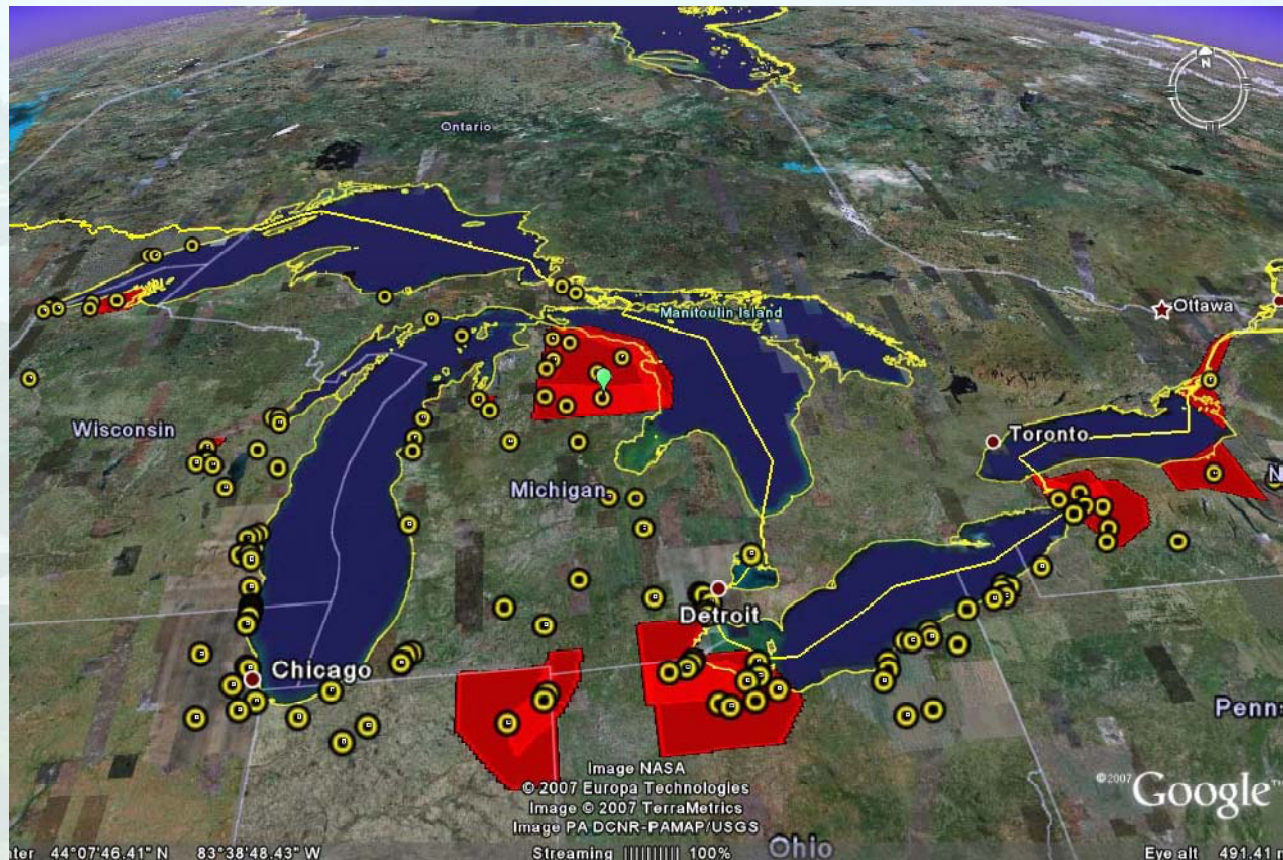


# GLRC Habitat/Species Subcommittee Restoration/Protection Web Tools



An aerial photograph of a winding river flowing through a lush green landscape. The river meanders across the scene, surrounded by dense vegetation and fields. In the background, a large body of water is visible under a hazy sky. The word "Background" is overlaid in the center of the image in a large, black, sans-serif font.

**Background**



# Web Tools Purposes

- Web-based entry/query tools designed to collect information about potential restoration projects and applicable funding / assistance programs
- Three key objectives:
  - Enhance collaboration between potential project sponsors at all levels of government to advance projects from one phase to the next
  - Provide consistent and comprehensive information to help agencies to prioritize resource allocations
  - Help define unmet funding needs under specific authorities to advance advocacy efforts by the Great Lakes Commission

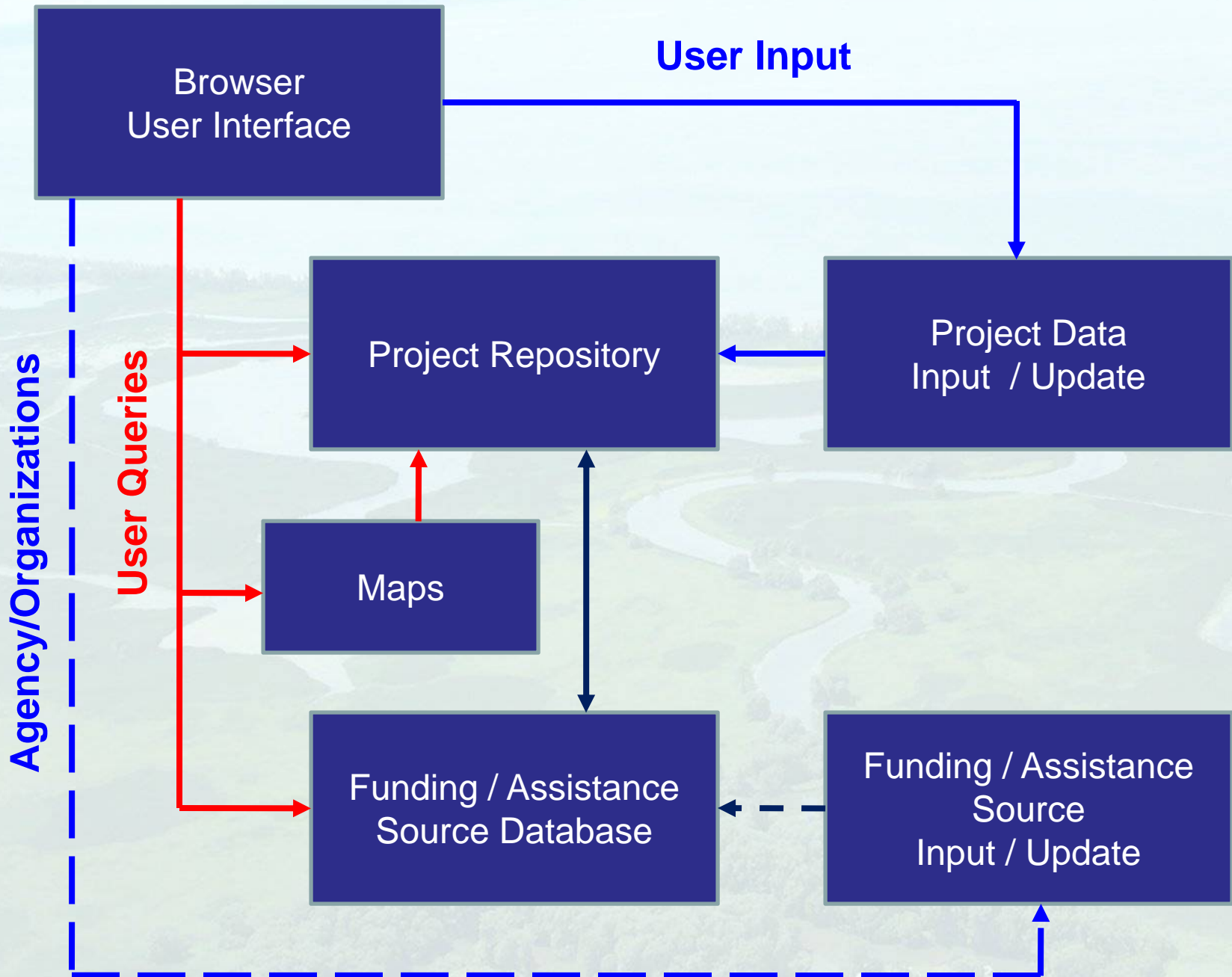


# Web Tools Features

- Consistent, comparable data and information about habitat protection and restoration projects across a state and/or entire Great Lakes basin
- Version 1.0 of the tools has about 240 prospective projects and 130 funding sources identified
- Version 2.0 includes improved “look and feel,” project benefit assessments, greater emphasis on project phases, enhanced query capabilities and a link between projects and most likely funding sources

An aerial photograph of a lush green landscape. A winding river flows through the center, surrounded by dense vegetation and fields. In the background, a large, calm lake stretches across the horizon under a clear sky. The overall scene is peaceful and scenic.

# Components of Web Tools



An aerial photograph of a river delta system, showing a main river channel that branches out into several smaller channels and ponds. The surrounding land is green and appears to be a mix of forest and open fields. The text "Project Repository" is overlaid in the center of the image in a large, black, sans-serif font.

# Project Repository

# Online Project and Funding Databases



## Habitat/Species Subcommittee Protection/Restoration Web Tools

Welcome to the Great Lakes Habitat / Species Subcommittee's web-based tools. The information contained in the project repository and funding assistance databases are being used to promote more integrated and comprehensive restoration activities across the region.

The details contained in these web tools are updated by a wide variety of potential project collaborators who are working to advance the Great Lakes Regional Collaboration Strategy report published in 2005. The information collected in these databases will be shared between various project collaborators to promote advancement of common habitat restoration goals. This information also will be used by various fundings and assistance sources to prioritize resource allocation decisions. Your input to this collaborative process will help the Great Lakes community to improve efficiencies and achieve results more rapidly.



Search Projects

Map Viewer

Login

Register



US Army Corps  
of Engineers



U.S. Fish &  
Wildlife Service



# <http://gis.glin.net/habitat>



# Project Entry – Tabbed Structured



## Projects

My Projects

Enter New Project

## Full Project Database

Query the Database

Download the Database

Map Projects

Demo Projects

Home Contact Logout

Basic Information

Partners

Geography

Benefits

Costs

Other

Funding Match

[save](#) | [reset](#) | [help](#)

### Title

Official title of project, inclusive of location and type of restoration work being done. Title limited to 255 characters.

⊕ Example

### Abstract

Brief narrative summary of the project. Abstract limited to 6000 characters.

⊕ Example

### Project Type

Select primary function

- Restoration/Rehabilitation/Creation ?
- Enhancement/Improvement ?
- Protection ?
- Other (eg education, monitoring, research) ?



## Input Tabs:

Basic Information

Project Partners

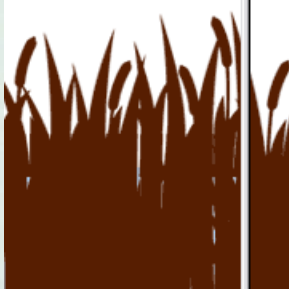
Geographic Coverage

Anticipated Benefits

Anticipated Costs

Other Details (Monitoring Needs, etc.)

Suggested Funding or Assistance Sources



# Project Phases

**Proposed** - These projects should be part of a formal plan, grant application, or other official document and must include specified geographic areas, restoration objectives and identified anticipated benefits.

**Planning Initiated** – A formal planning study is underway but not yet complete

**Design Initiated** – Engineering design work has begun and/or non-structural preparations (land acquisition, conservation easements, biologic methods) are being investigated

**Preparations Completed** - Planning/design activities for the project have been completed but no on-the-ground restoration activities have begun.

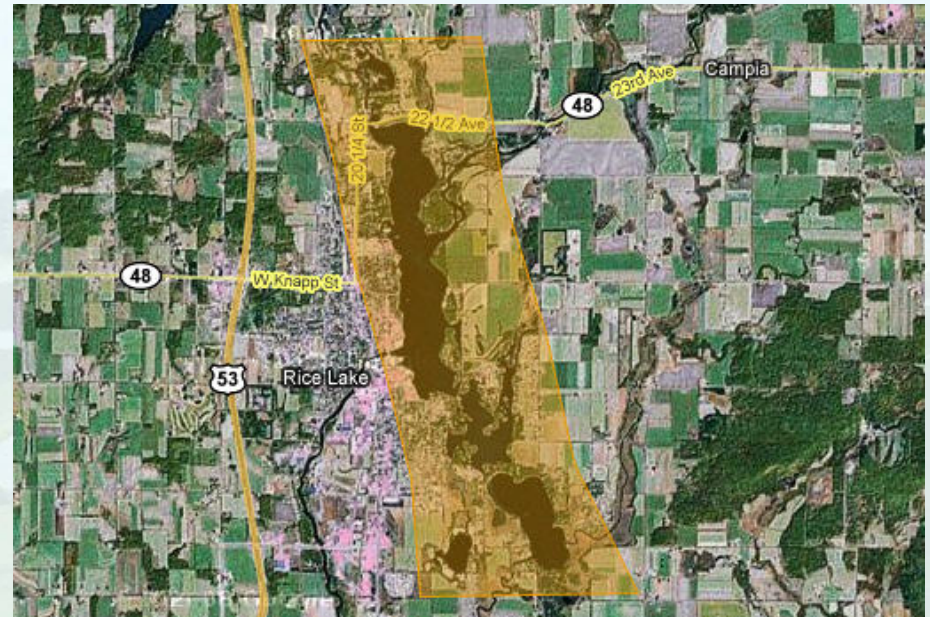
**Implementation Started** - On-the-ground protection or restoration activities have begun

**Post-Completion** - On-the-ground implementation activities such as major construction and planting are completed. Project monitoring, adaptive management, and other project management activities may be ongoing.

# Geographic Coordinate Capture Tool

Automatically harvests:

- State
- County
- Township
- Congressional District
- Project acreage
- 8-digit watershed code
- NHD line segment
- Current land cover/habitat types
- Wetlands mapping (NWI, etc.)
- Soil types
- Rare, unique or protected species or habitats
- Part of TNC Conservation Blueprint
- Other available GIS features



Rice Lake, WI

An aerial photograph of a winding river flowing through a lush green landscape. The river meanders from the top center towards the bottom right. To the left of the river, there is a large, irregularly shaped pond or reservoir. The surrounding area is a mix of green fields and dense forests. The overall scene is bright and clear, suggesting a healthy natural environment.

# Funding / Assistance Sources

# Suggested Funding and Assistance Sources



- My Projects
- Enter New Project
- Demo Projects
- Map Viewer
- Edit My Profile
- Search the Database
- Search Funding Sources

Home Logout

## Funding sources

### Funding Program Name

[Cooperative Conservation Initiative Conservation Challenge Cost Share](#)

[Cooperative Conservation Initiative Conservation Challenge Cost Share - NPS](#)

[Cooperative Endangered Species Conservation Fund](#)

[Environmental Regulatory Enhancement](#)

[Great Lakes Fish and Wildlife Restoration](#)

[Migratory Bird Management](#)

[NFWF/NACo Coastal Counties Restoration Initiative](#)

[Pennsylvania Grow Greener II Bond Issue](#)

[Planning Assistance to States](#)

[Targeted Watersheds - State and Tribal Assistance Grant](#)

[Tribal Partnership Program](#)

[Aquatic & Wetlands Habitats Associated with Dredging for Authorized Navigation Projects \(Beneficial Use of Dredged Material\)](#)

[Aquatic Plant Control Program](#)

[Coastal Program](#)

[Cooperative Conservation Partnership Initiative \(CCPI\)](#)

[Ecosystem Health and Sustainable Fish Populations](#)

[Great Lakes Remedial Action Plans \(RAPs\)](#)

[Great Lakes Watershed Restoration Program](#)

[Restoring Natural Flow Regimes](#)

[State Wildlife Grants \(SWG\)](#)

[Challenge Cost Share Grants Program](#)

[Coastal Zone Management Program](#)

[Estuary Habitat Restoration Program](#)

[Fish and Wildlife Management Assistance](#)

[Fisheries Habitat Restoration/Community-based Restoration Program](#)

[National Fish Passage Program](#)

[National Fish and Wildlife Foundation](#)

### Relevancy

★★★★★★★☆☆☆ 70%

★★★★★★★☆☆☆ 70%

★★★★★★★☆☆☆ 70%

★★★★★★★☆☆☆ 70%

★★★★★★★☆☆☆ 70%

★★★★★★★☆☆☆ 70%

★★★★★★★☆☆☆ 70%

★★★★★★★☆☆☆ 70%

★★★★★★★☆☆☆ 70%

★★★★★★★☆☆☆ 70%

★★★★★★★☆☆☆ 70%

★★★★★★★☆☆☆ 70%

★★★★★★★☆☆☆ 65%

★★★★★★★☆☆☆ 65%

★★★★★★★☆☆☆ 65%

★★★★★★★☆☆☆ 65%

★★★★★★★☆☆☆ 65%

★★★★★★★☆☆☆ 65%

★★★★★★★☆☆☆ 65%

★★★★★★★☆☆☆ 65%

★★★★★★★☆☆☆ 65%

★★★★★★★☆☆☆ 60%

★★★★★★★☆☆☆ 60%

★★★★★★★☆☆☆ 60%

★★★★★★★☆☆☆ 60%

★★★★★★★☆☆☆ 60%

★★★★★★★☆☆☆ 60%

★★★★★★★☆☆☆ 60%

# Great Lakes Funding Programs

**ID**  
7

**Program name:**  
Conservation Reserve/Enhancement Program (CRP/CREP)

**Agency information:**  
U.S. Department of Agriculture

**Program description:**  
The CRP and CREP is a voluntary program that provides funding to reduce soil erosion and sedimentation, improve water quality, maintain fish and wildlife habitat by restoring upland and grassland habitats.

**Statutory authority:**  
Public Law 107-171, Farm Security and Rural Investment Act, Title II, Amended 2002

**Geographic focus:** National

**Project activities:** *Check all that apply.*

<input type="checkbox"/> Aquatic invasive species	<input type="checkbox"/> Habitat restoration/improvement	<input type="checkbox"/> Public information	<input type="checkbox"/> Toxic pollutants
<input type="checkbox"/> Areas of concern / sedimentation	<input type="checkbox"/> Indicators and information	<input type="checkbox"/> Research/Monitoring	<input type="checkbox"/> Other
<input type="checkbox"/> Great Lakes coastal health	<input checked="" type="checkbox"/> Nonpoint source pollution	<input type="checkbox"/> Sustainable development	
<input checked="" type="checkbox"/> Habitat conservation and species management	<input checked="" type="checkbox"/> Habitat protection	<input type="checkbox"/> Terrestrial invasive species	

## Financial Information

**Applicant eligibility:**

**Funding authorization:**

**Award cap:**

*Funding authorizations are contained in statutory language and reflect the maximum amount that can be appropriated. Actual monies appropriated to carry out activities under a statute vary depending on budget constraints and are often less than the authorized amount.*

Match required

**Match amount (%):**

50

**In-kind Match:**

In-kind property  
 In-kind services

**2003-2006 Average Annual:**

**Expenditures:** \$1,907,666,667.00

**Number of projects:**

**Deadlines:**  
Contact agency

**Application process:**  
Producers can offer land for C

**Assistance type:**  
Cooperative Agreement

**Selection process:**

**Program notes:**  
Federal pass through money to states. Each state administers the program differently. For information regarding state programs, please contact the individual state program. Funding is based on a cap of 39.2 million acres, not an annual budget.

Save

Add a Program

Exit



## GLHI Database Query

You may query the Great Lakes Habitat Initiative Database by utilizing the below drop down menus ar

The corresponding SQL code for each query is below results.

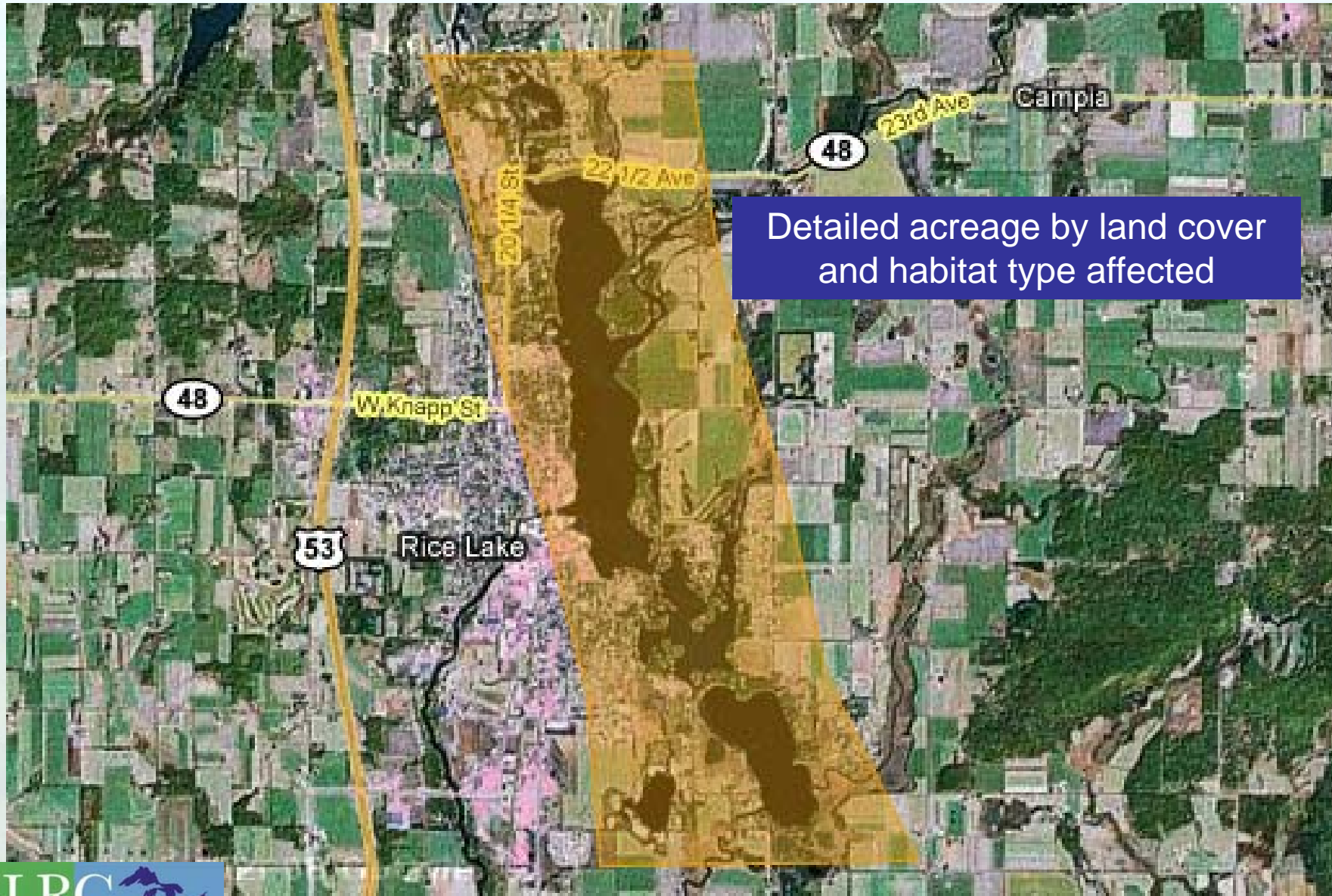
\*Results are viewable to registered GLHI users only.

### Basic Search

#### Basic Search

Search:	<input type="text" value="Completely submitted projects"/>
Project Phase	<input type="text" value="All"/>
Project Type	<input type="text" value="All"/>
Project Area Within State	<input type="text" value="All"/>
Project Area Within Congressional District	<input type="text" value="All"/>
Achievement toward restoration goals:	<input type="text" value="Restoration goals completely met"/>
Project area within <a href="#">Area of Concern</a> :	<input type="text" value="Select AOC"/>
Project Duration (in months, if full funding were available):	<input type="text" value="&gt;="/> <input type="text"/>
Acres:	<input type="text" value="&gt;="/> <input type="text"/>
Total Cost:	<input type="text" value="&gt;="/> \$ <input type="text"/>
Project Area Within Conservation Blueprint Area ( <a href="#">Map It</a> )	<input type="checkbox"/>
Project Area Within <a href="#">Areas of Concern</a>	<input type="checkbox"/>

# Project Queries – Geographic Perspective



# Follow-On Activities

- Continue to improve ease of use
- Improve listings of project stakeholders
- Add linear feature capability (e.g. dam removal)
- Improve acreage estimation for end targets
- Seek continued support from states, tribes and NGOs to enter new projects and update entries
- Promote federal agencies to enter projects and utilize database in resource allocation decisions
- Link to higher resolution online GIS resources
- Support broader wetlands accounting system



Questions / Comments???