

# Wisconsin's Habitat Protection and Restoration Strategy

Wisconsin Great Lakes Regional Collaboration  
Habitat and Species Workshop  
March 17, 2009  
University of Wisconsin – Sheboygan  
Cynthia Moore  
WDNR- Office of Great Lakes  
[Cynthia.moore@wisconsin.gov](mailto:Cynthia.moore@wisconsin.gov)

# Overview

- ◆ Overview of WI Strategy 2006 and relation to LaMP
- ◆ Overview revisions on State habitat strategy
- ◆ Process
  - Present key strategies- what's missing
  - Review by strategy- what's missing or needs to be changed
  - Your general comments/recommendations

# A Wisconsin Great Lakes Strategy to Implement GLRC

Translate WI specific actions

- Build on Wisconsin plans and initiatives
- ◆ Serve as a framework
  - Planning & implementation
  - economic stimulus, federal funding
- ◆ Enhance funding opportunities
  - Comprehensive plan
- ◆ Engage/educate stakeholders
  - Informed citizenry committed to act and support
  - Examples are Lake Superior and Lake Michigan stakeholder groups

## Great Lakes Regional Collaboration



A Strategy to Restore and Protect the Great Lakes



Draft Action Plan

July 2005

# Wisconsin's Strategy

**Goal** : a STATE strategy that will be used by federal, state and local gov't agencies and environmental and nonprofits in planning for implementation of actions to Protect and Restore WI's Great Lakes

## Immediate use

a framework for economic stimulus project proposals

## Longer term

coordinate allocation of resources

- ◆ WI Strategy 2006
  - Stakeholder input
  - DNR draft
  - Stakeholder review
- 2009 Update
  - Final draft summer 2009
  - Review March-June



# Wisconsin Priorities

Consistent with GLRC

- ◆ Invasive Species
- ◆ **Habitat and Species**
- ◆ Coastal Health
- ◆ Persistent Bioaccumulative Toxins (PBTs)
- ◆ Nonpoint Source Pollution
- ◆ Areas of Concern
- ◆ Sustainable Development
- ◆ Information and Indicators

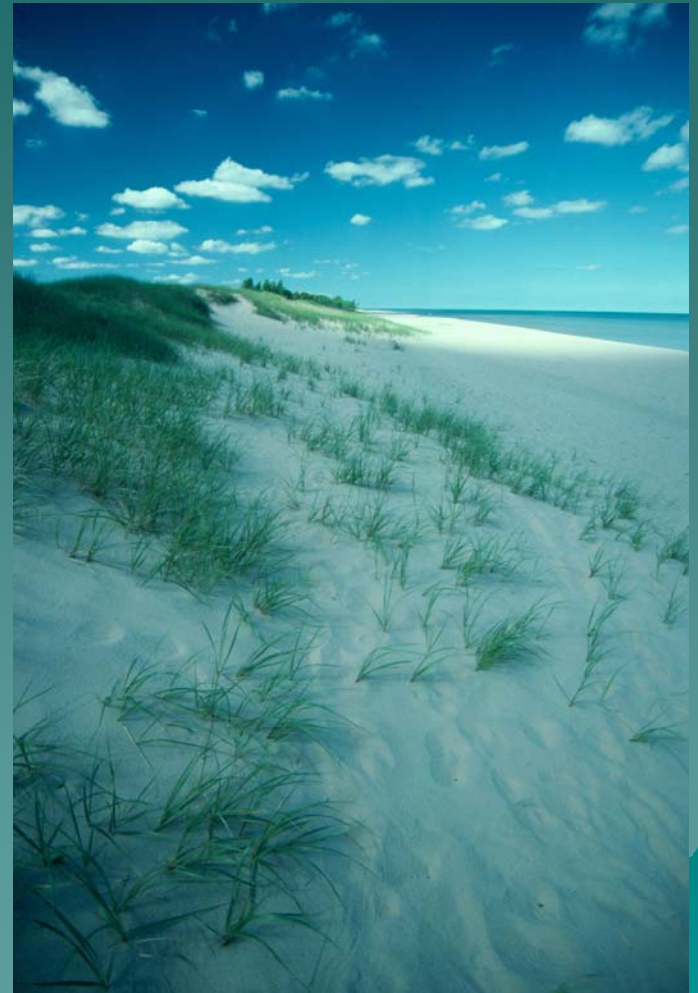


# Habitat and Species Goal

Protect and restore habitats critical for  
“species of greatest conservation need”

Approach: Use Existing Plans

- ◆ WI Comprehensive Wildlife Conservation Plan -Endangered species recovery plans
- ◆ No. American Waterfowl Plan/Joint Venture
- ◆ Fisheries Joint Strategic Plan
- ◆ Migratory Bird Accord
- ◆ Lake Superior Binational Program
- ◆ Lake Area Management Plans (LaMP) and Remedial Action Plans (RAP)



# “Species Of Greatest Conservation Need”

- ◆ “Native wildlife species with low/declining population & most at risk of no longer being part of Wisconsin’s fauna and their habitats” (Wisconsin's Wildlife Action Plan)
  - Lake trout
  - Lake sturgeon
  - Great Lakes spotted musky Tern populations
  - Brook trout in Lake Superior
  - Walleye
  - Trumpeter Swans
  - Increasing breeding pairs of waterfowl

# LaMPs

## Lake Area Management Plans

- Plan of action to assess, restore, protect and monitor the ecosystem health of a Great Lake.
- Used to coordinate the work of all the government, tribal, and non-government partners working to improve the Lake ecosystem. Coordinated by GLNPO/EPA
- Public consultation process used to ensure that the LaMP is addressing the public's concerns.

# LaMP Key Elements

- ◆ **Fish**
- ◆ Drinking water
- ◆ Swimable
- ◆ **Habitat**
- ◆ Public access
- ◆ Sustainability
- ◆ Contaminants
- ◆ Nuisance species
- ◆ **Stewardship**
- ◆ Collaborative ecosystem management
- ◆ Data analysis / management
- ◆ Subwatershed status report

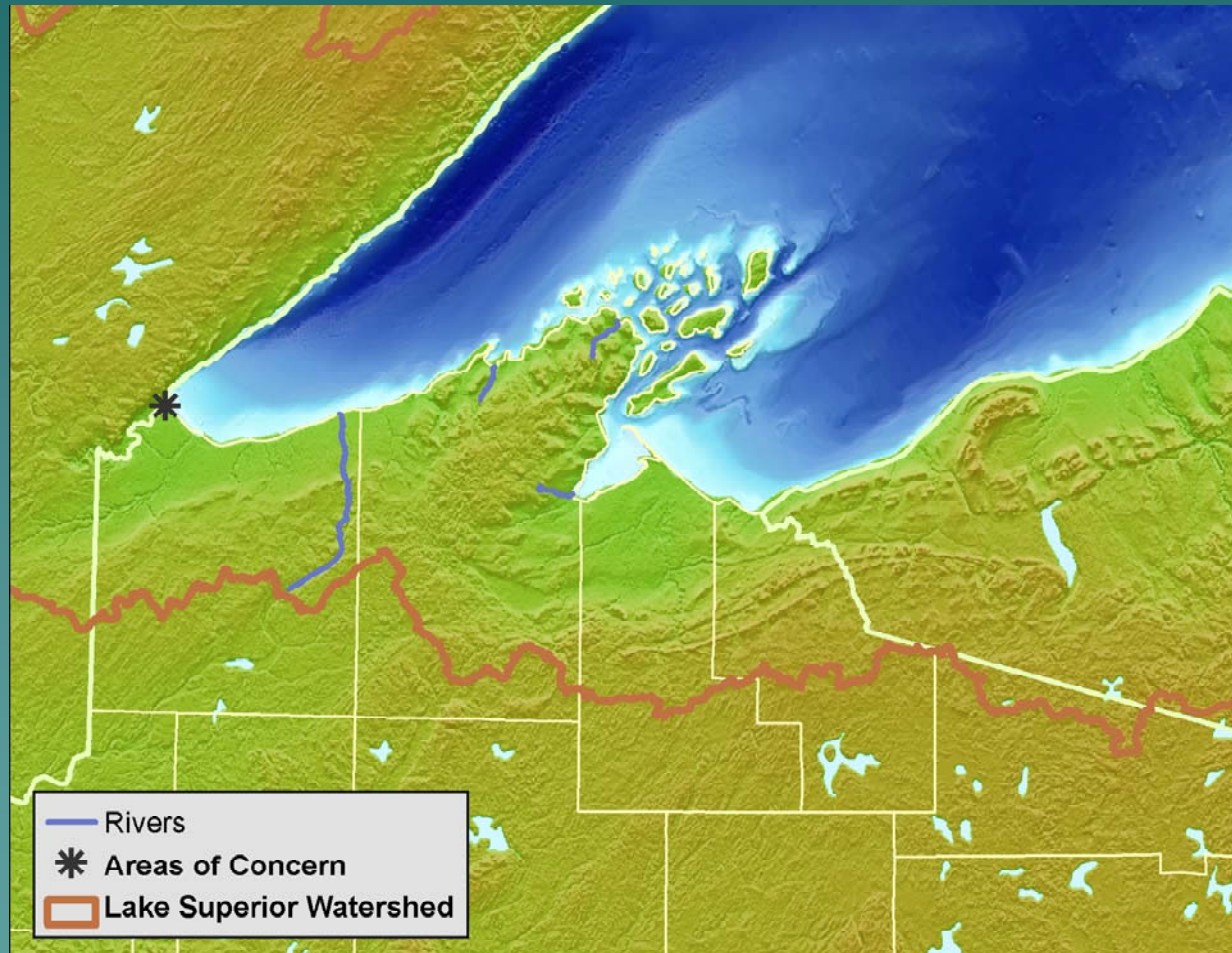
# Status of Wisconsin GL LaMPs

- ◆ Both Updated in 2008
  - Status of lake ecosystem
  - Summary of recent activities, goals and next steps
- ◆ Lake Superior LaMP
  - Model for binational cooperative ecosystem management of the Great Lakes
    - ◆ Lake Superior Binational Program
    - ◆ Zero Discharge Demonstration Program

# Lake Michigan Watershed



# Lake Superior Watershed



# Wisconsin Habitat Strategies

- ◆ Lake Trout Restoration
  - consistent with Joint Strategic Plan
- ◆ Wetlands Protection/Restoration
  - 55,000 acres coastal, riparian, wetland, associated uplands
- ◆ Tributary Restoration
  - restore at least 8 of listed target areas
- ◆ Public sector education and outreach
  - Goal: informed and active participants

Develop Basin specific action plans



# Strategy: Lake Trout Restoration

- ◆ Support restoration strategies consistent with Joint Strategic Plan
- ◆ Restoration Plans for each lake
  - Lake Superior Restoration Plan
  - Lake Michigan Rehabilitation Mgt Plan

## Key elements on Plans

- ◆ Stocking appropriate strains
- ◆ Maintaining protective fishing regulations
- ◆ Support of GLFC sea lamprey control



# Strategy: Wetlands Protection and Restoration

Protect and restore 55,000 acres of coastal, riparian, and wetland habitat and associated uplands in Wisconsin.

- ◆ Address statewide needs and resources – undeveloped shorelines, scattered natural areas, large working forests, prairies and savannas
- ◆ Identify and plan for short and long terms impacts of climate change



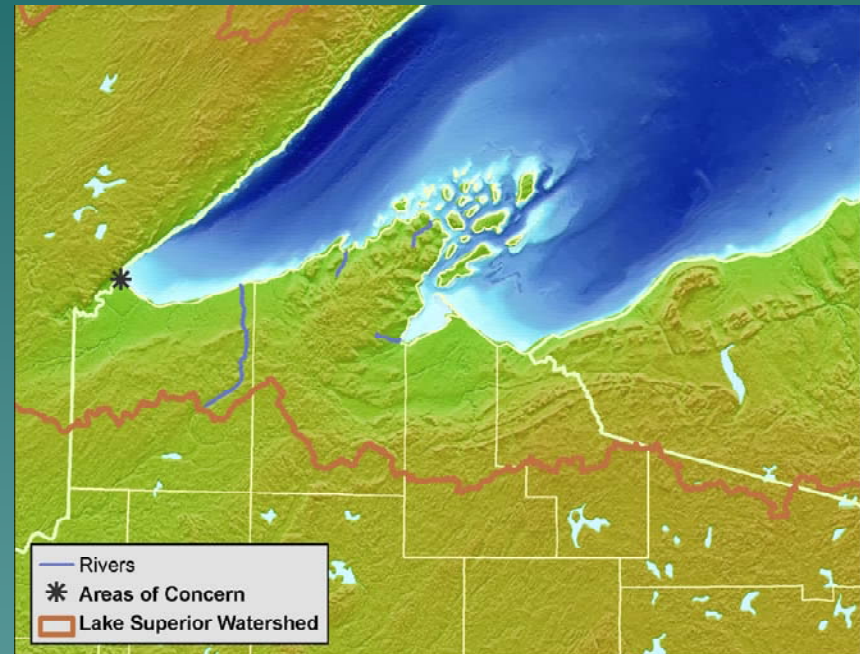
# Lake Michigan Basin Wetland Protection target areas

- West Shore of Green Bay - 7000 wetland acres for birds
- Lake Winnebago System (nest colony area for endangered Common Tern and Forster's Tern)
- Islands (Green Bay and Tip of Door County)
- Northern pike spawning habitat



# Lake Superior Basin Wetland Protection target areas

- Chequamegon Point and Long Island (nesting areas for endangered Piping Plover)
- Wisconsin Point
- Allouez Bay
- the Kakagon Sloughs
- the Lower Nemadji River Marshes
- Proposed National Estuary Reserve site
- Other ecosystems goals consistent with Binational Program



# Strategy: Tributary Restoration

Goal- Restore at least 8 tributaries

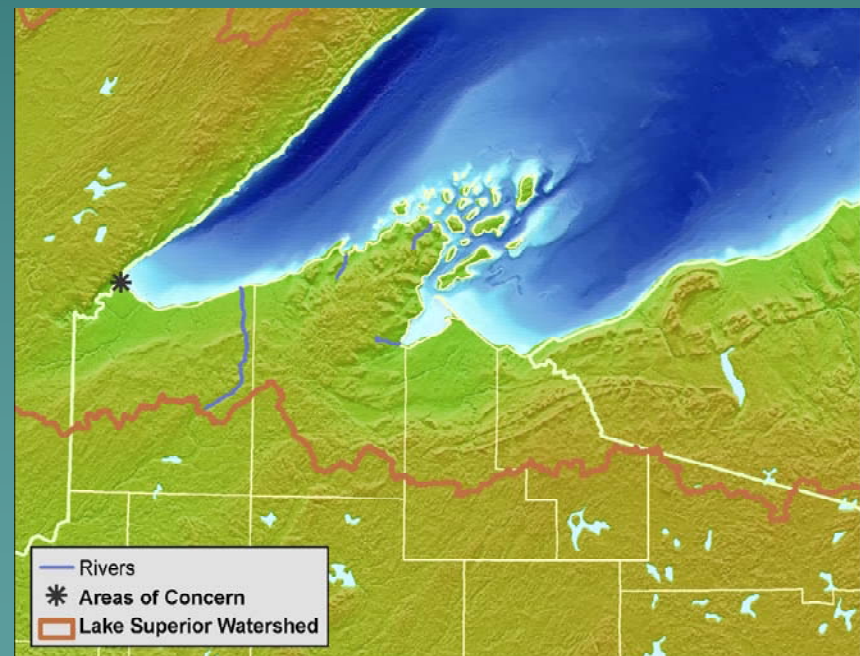
Criteria for selection of target tributaries

- ◆ Criteria
- ◆ Criteria
- ◆ Criteria



# Lake Superior Basin WMU Tributary Protection Target Areas

- ◆ Whittlesey Creek
- ◆ Raspberry River
- ◆ Bois Brule River
- ◆ Bark River Saxine Creek
- ◆ Flag River
- ◆ Sioux River
- ◆ Cranberry River
- ◆ Iron River
- ◆ Onion River
- ◆ St. Louis River
- ◆ Fish Creek
- ◆ Bad River & tributaries



# Lake Michigan Basin Tributary Protection Target Areas (by WMU)

## Green Bay

Menominee River  
Peshtigo River

## Manitowoc

Manitowoc River  
Stony Brook

## Milwaukee

Milwaukee River  
Mole Creek  
Ulao Creek

## Twin-Door-Kewaunee

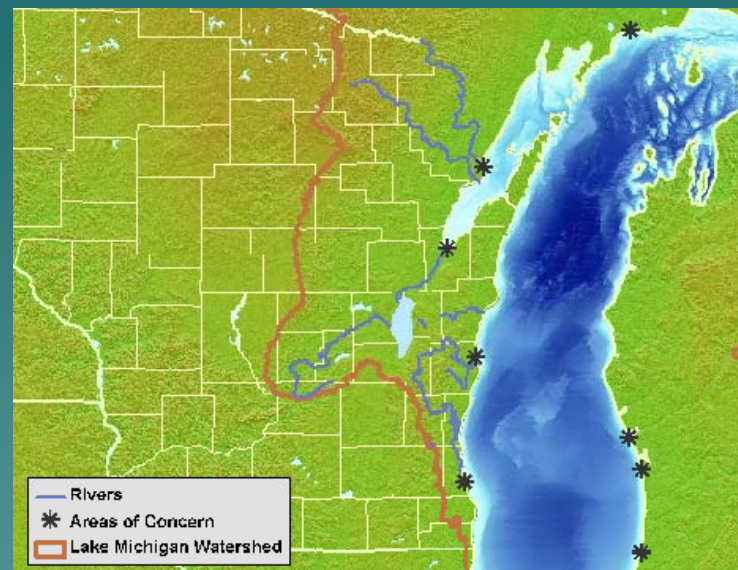
Kewaunee River

## Wolf

Willow River

## Upper Fox WMU

## Root Pike WMU



## Sheybogan

Sheybogan River  
Onion River  
Otter Creek  
Willow Creek

# Strategy: Public sector education and outreach

**Goal:** informed and engaged participants actively support wetland habitat restoration and protection

- ◆ Educate about functions and value of coastal and interior wetlands
- ◆ Education about wetland regulations (what, why, how)