

State Wildlife Grants Program and the Comprehensive Wildlife Conservation Strategy

Amy Mahar and Jenny Landry
Diversity Biologists
Southeast and Southwest Lake Ontario Basins

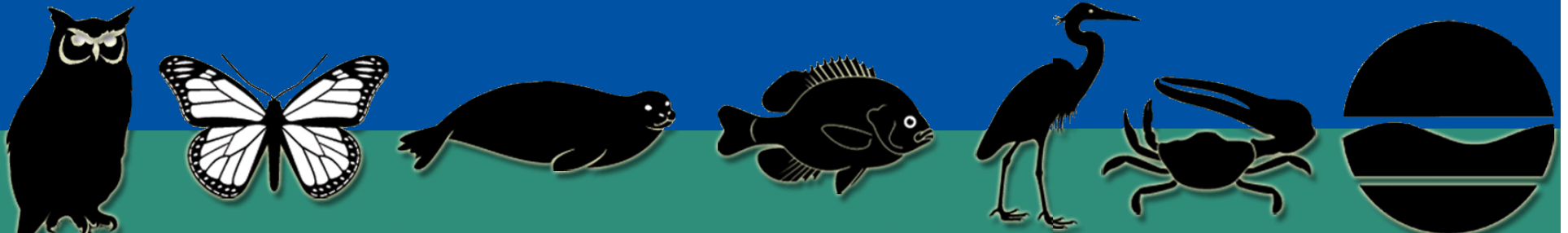
new york state



WILDLIFE GRANTS PROGRAM

State Wildlife Grants Program Background

- The program was first authorized by congress in 2002
- Program grew out of Conservation and Reinvestment Act compromise language
- Program is subject to annual congressional legislation



What does the program do?

- SWG program is intended to assist states in **biodiversity preservation**
 - Tied to “species in greatest need of conservation”
 - These are species which have not traditionally received funding for management
 - Intended to avoid new listings of endangered species



How does the program work?

- States must write a Comprehensive Wildlife Conservation Strategy (CWCS)
- Funds apportioned to states
- States apply for their apportionment annually from USFWS
- The program funds species focused research, inventory, planning, management and restoration projects

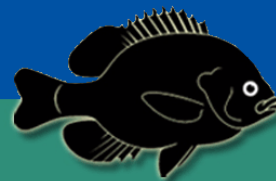


Match required - 50%

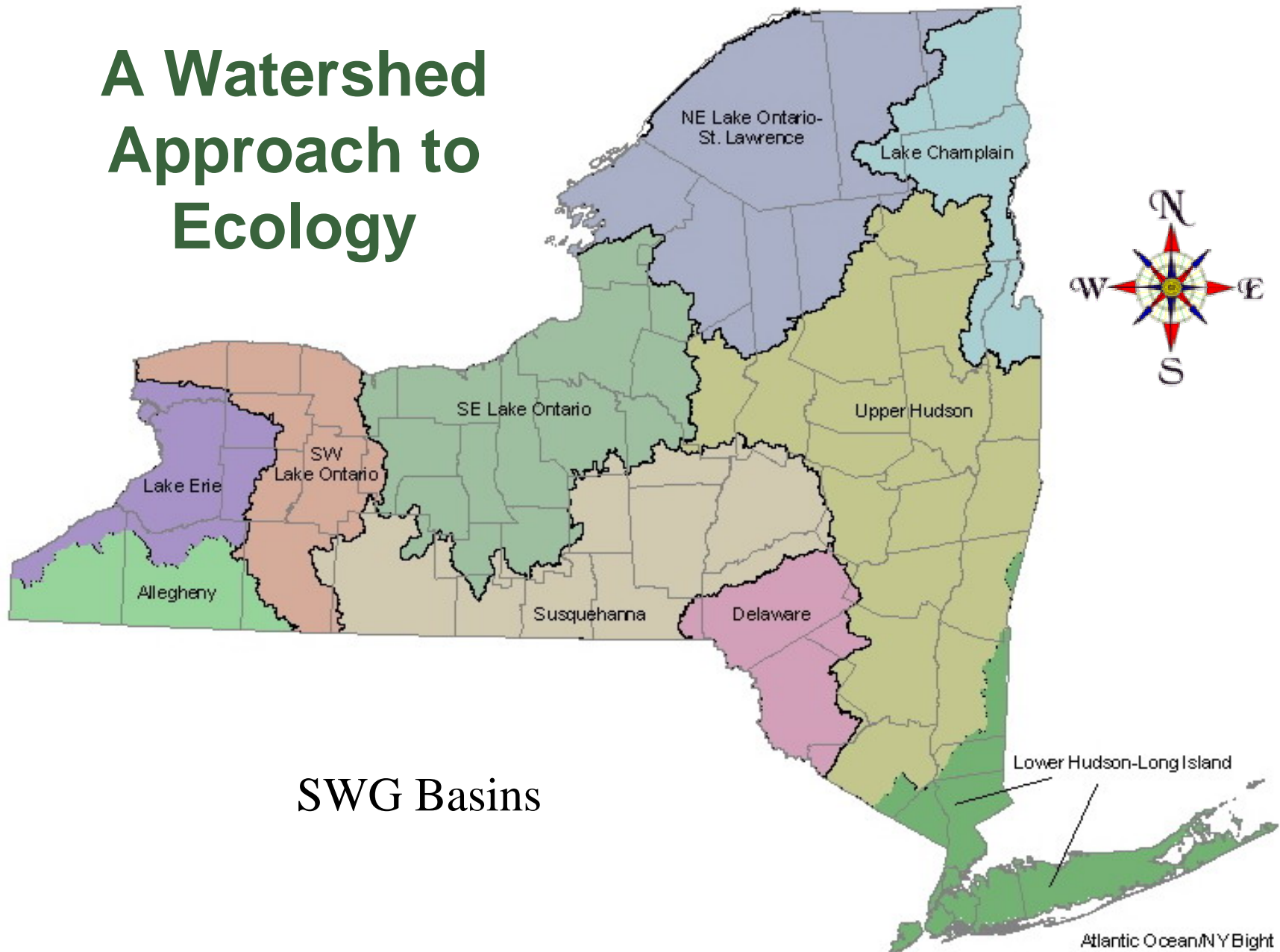


NY's SWG funding so far...

Federal Fiscal Year	National Total	NY Allocation
FFY 2001 (WCRP)	\$50 M	\$2.33 M
FFY 2002	\$85 M	\$3.73 M
FFY 2003	\$65 M	\$2.78 M
FFY 2004	\$70 M	\$2.95 M
FFY 2005	\$69.12 M	\$2.94 M
FFY 2006	\$68.5 M	\$2.90 M
FFY 2007		



A Watershed Approach to Ecology



SWG Basins

Comprehensive Wildlife Conservation Strategy

- Compilation of what we know about the distribution and abundance of species and habitats in New York State.
- Identifies threats to species of Greatest Conservation Need and provides recommendations for how we should proceed in their conservation.



Comprehensive Wildlife Conservation Strategy Structure

- Organized by major watersheds of the state
- Species information analyzed by each watershed
 - List species occurring in the basin
 - List critical habitats of the basin
 - Priority conservation actions in the basin
- Information from other planning documents reviewed and included.



Monitoring Recommendations

- Current information on distribution, abundance, life history, minimum viable population size, and habitat requirements is needed to implement effective management actions for many SGCN in this basin.
- Continue and expand collection of information on the concentration of persistent toxic substances in SGCN and their habitats in the basin, especially for wetland and aquatic species, such as piscivorous birds.
- Continue monitoring for Type E Botulism in birds and fish found along the entire Lake Ontario shoreline.



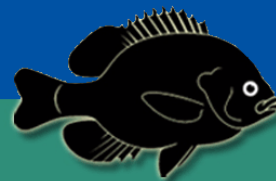
Monitoring Recommendations Cont.

- Establish long-term monitoring programs for marsh-nesting birds, aquatic herps and wetland-associated invertebrates.
- Monitor effects of water level controls on wetland and aquatic species habitats adjoining Lake Ontario. Particular issues to monitor include:
 - The effects of human-influenced water level controls on freshwater marsh nesting birds, especially black tern, least bittern, and pied-billed grebe;
 - Relationship of water level controls to distribution of invasive species, including purple loosestrife; and
 - The effects of water level controls on habitat suitability for various turtles (especially Blanding's turtle, Bog turtle, spiny softshell and spotted turtle) and salamanders (especially blue-spotted and Jefferson).
- Comprehensive water quality monitoring in lakes and streams should be implemented in priority water bodies that have potential habitat for aquatic SGCN.



Species of Greatest Conservation Need

- Statewide
 - 538 Species of which:
 - 20 are federally threatened or endangered
 - 146 are NYS threatened, endangered or special concern



Highlights of Species of Greatest Conservation Need

- Birds (118)
- Freshwater fish (40)
- Marine & Diadromous fish (51)
- Invertebrates
 - Mollusks (59)
 - Insects (197)
 - Crustacea (7)
- Mammals (21)
- Herpetofauna (44)



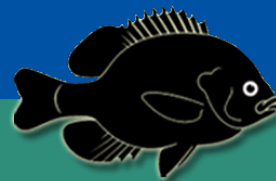
Fish SGCN:

- Iowa darter
- Pugnose shiner
- Western pirate perch
- Blackchin shiner



Freshwater Marsh Nesting Bird SGCN

- Black-crowned night-heron
- American bittern
- Black tern
- King rail
- Least bittern
- Pied-billed grebe
- Yellow rail



Amphibian and Reptile SGCN:

- Western chorus frog
- Spiny softshell
- Snapping turtle
- Blanding's turtle
- Bog turtle
- Spotted turtle
- Musk turtle
- Four-toed salamander



Invertebrates:

- Moths and butterflies
- Dragonflies and damselflies
- Mayflies and stoneflies
- Mussels



Questions?

For more information see:

www.dec.ny.gov/animals/30483.html

