



---

## 2012 Annual Report



# 2012 Board of Directors



The Town of Newfane Marina on Lake Ontario in Olcott, N.Y. | Cover image: Lake Superior, Pictured Rocks National Lakeshore in Alger County, Mich.

Kenneth G. Johnson, Chair  
Administrator, Water Division | Wisconsin Department of Natural Resources

Kelly Burch, Vice Chair  
Regional Director, Northwest Regional Office | Pennsylvania Department of Environmental Protection

James M. Tierney, Immediate Past Chair  
Assistant Commissioner for Water Resources | New York State Department of Environmental Conservation

Marc Miller  
Director | Illinois Department of Natural Resources

Kari Bennett  
Commissioner | Indiana Utility Regulatory Commission

Jon W. Allan  
Director, Office of the Great Lakes | Michigan Department of Environmental Quality

Hon. Thomas E. Huntley  
State Representative | Minnesota Legislature

Joseph Martens  
Commissioner | New York State Department of Environmental Conservation

James Zehringer  
Director | Ohio Department of Natural Resources

William Carr  
Manager, International Relations Policy | Government of Ontario Office of International Relations and Protocol

Eric Marquis  
Québec Government Representative in Chicago | Government of Québec



# GLRI has been a game changer



Lake Superior from the top of Mount Josephine in Grand Portage, Minn.



Kenneth G. Johnson Tim A. Eder

In thinking about progress under the Great Lakes Restoration Initiative (GLRI), “steady and sure” is an apt description. We are moving forward and making real improvements in the health and ecological integrity of our Great Lakes. Progress isn’t always as fast as we’d like and some improvements may not show immediate results, but what’s important is that we’re moving in the right direction and making positive progress to improve and protect our Great Lakes.

In 2012, the GLRI focused on three key priorities and the Great Lakes Commission (GLC) was pleased to contribute to the progress:

**Accelerating the cleanup of Areas of Concern.** Knowing that AOC cleanups are complex and expensive, the goal of delisting five Areas of Concern by the end of FY2014 is a worthy challenge. But it’s happening. Tremendous progress in cleaning up these legacy pollution sites is being made throughout the basin, most notably at Sheboygan River in Wisconsin, Presque Isle Bay in Pennsylvania (officially delisted in February 2012!) and Muskegon Lake in west Michigan. Over the past several years, the GLC has proudly led a large-scale project to support restoration activities aimed at delisting the Muskegon Lake AOC. Funded by the American Recovery and Reinvestment Act (via NOAA), the

project has restored 24 acres of coastal wetlands and more than a mile of shoreline at multiple sites along the south shore of Muskegon Lake. It also funded removal of more than 180 tons of degraded lake fill to restore lake bottom and shallow water areas.

**Reducing harmful algae in three priority watersheds.** Phosphorus runoff is contributing to high levels of harmful algae (especially in warmer, shallow embayments) that chokes aquatic life, creating “dead zones” devoid of oxygen in areas throughout the Great Lakes. These harmful algal blooms, or HABs, threaten coastal economies, human health and the ecological health of our lakes. GLRI efforts have focused on protecting three “priority watersheds” from phosphorus runoff: Lower Fox River (WI), Saginaw River (MI) and the Maumee River (OH). With several long-running nonpoint source pollution programs, the GLC is poised to assist as Wisconsin sets nutrient standards and addresses priority sources. Fox P Trade, a new GLC-led project with funding from USDA-NRCS, will adapt and apply water quality trading principles to help alleviate high nutrient levels in the lower Fox River watershed.

**Preventing the introduction of new invasive species.** The GLRI continues to advance the Obama Administration’s “zero tolerance policy” toward invasive

species. In early 2012, the GLC and the Great Lakes and St. Lawrence Cities Initiative released “Restoring the Natural Divide,” a high-profile report to identify engineering options for Chicago’s waterway system to prevent interbasin movement of aquatic invasive species, including Asian carp. With support from six funders, the ultimate goals of the project are to accelerate progress toward a permanent solution that protects the Great Lakes against invasive species from the Mississippi and demand more urgency in the federal response. The time to act is now.

In summary, the GLRI has truly been a game changer for our region, and is one of the few programs that continues to receive strong bipartisan support in Congress. Perhaps the moral of the story is that sometimes we should all plant a tree that we may not ever sit under. What we do today is going to affect those who walk after us. Protecting our Great Lakes for future generations is just the right thing to do.

Kenneth G. Johnson, Chair

Tim A. Eder, Executive Director

# 2012 Funders and Supporters



Sailing on Lake Michigan near Chicago, Ill.



Lake Erie sport fishing in Erieau, Ont.

The great majority of Commission programs and projects are pursued in partnership with other agencies and organizations, and benefit from their funding support. A listing of 2012 funders and supporters is provided below. Thanks to all for their assistance!

---

*Note: the funders listed at right provided support to the GLC in calendar year 2012. The financial report on page 5 covers the GLC's fiscal year only, which concluded June 30, 2012.*

- American Recovery and Reinvestment Act – EPA
- American Recovery and Reinvestment Act – NOAA
- C.S. Mott Foundation
- Commonwealth of Pennsylvania
- Council of Great Lakes Governors
- Douglas-Westwood
- Ducks Unlimited
- Ecology & Environment Inc.
- Frey Foundation
- Government of Ontario
- Government of Québec
- Grand Valley State University
- Great Lakes Fishery Trust
- Great Lakes Observing System
- Great Lakes Protection Fund
- Industrial Economics, Inc.
- International Joint Commission
- Joyce Foundation
- LimnoTech, Inc.
- Michigan Department of Environmental Quality  
(formerly Michigan Department of Natural Resources and Environment)
- Michigan State University
- Michigan Technological University
- Navigant Consulting
- New York Power Authority
- New York State Department of Environmental Conservation
- National Oceanic and Atmospheric Administration
- (NOAA) Coastal Services Center
- NOAA National Sea Grant College Program
- NOAA Restoration Center
- State of Illinois
- State of Indiana
- State of Michigan
- State of Minnesota
- State of New York
- State of Ohio
- State of Wisconsin
- Superior Watershed Partnership
- U.S. Army Corps of Engineers
- U.S. Department of Agriculture, Natural Resources Conservation Service
- U.S. Department of Energy, National Renewable Energy Laboratory
- U.S. Environmental Protection Agency (U.S. EPA), Great Lakes National Program Office
- U.S. EPA, Region 5, Air and Radiological Division
- U.S. EPA, Region 5, Superfund Division
- U.S. Fish and Wildlife Service
- USGS – Great Lakes Science Center
- Wege Foundation

# FY 2012 Revenues and Expenses



Paragliding over Lake Michigan and Indiana Dunes National Lakeshore near Dune Acres, Ind.



U.S. Coast Guard Cutter *Hollyhock* on the St. Clair River.

The Great Lakes Commission concluded FY 2012 in sound financial condition, with operating revenues of over \$9.4 million. Expenses exceeded revenues by \$297,885, or approximately three percent. This was in part due to buyout payments to several employees being recognized in this fiscal year.

Overall, the Commission continues to effectively manage its general and restricted funds to achieve the goals and objectives of the organization.

These figures were confirmed by an independent audit, which is conducted each year to examine the Commission's financial operations. The 2012 fiscal year ended June 30, 2012.

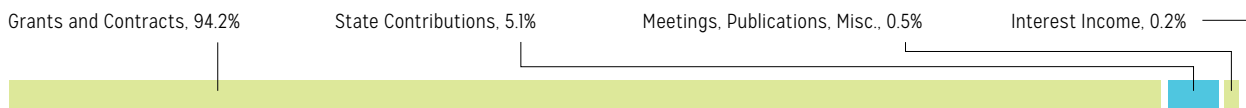
## Revenues

Grants and contracts	\$ 8,888,140	94.2%
State contributions	480,000	5.1%
Meetings, publications, misc.	47,770	0.5%
Interest income	17,091	0.2%
<b>Total</b>	<b>\$9,433,001</b>	<b>100.0%</b>

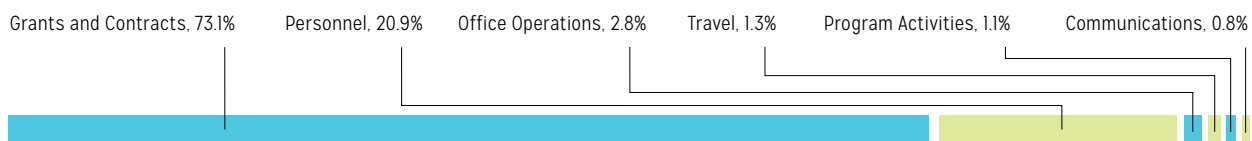
## Expenses

Grants and contracts	\$ 7,114,883	73.1%
Personnel	2,034,946	20.9%
Office operations	275,758	2.8%
Travel	123,241	1.3%
Program activities	101,771	1.1%
Communications	80,287	0.8%
<b>Total</b>	<b>\$ 9,730,886</b>	<b>100.0%</b>

## Revenues



## Expenses



Graphic is not to scale



# 2012 Commissioners, Alternates and Observers



Lake Michigan in Door County, Wis.



The St. Lawrence River in Québec City, Québec.

## Illinois

**Marc Miller**, *Illinois Dept. of Natural Resources*  
Joe Deal, *City of Chicago*  
Steven M. Powell, *United Food and Commercial Workers*  
Gov. Patrick Quinn  
Kimberly J. Walz, *Illinois Fifth Congressional District*

### Alternates

Dan Injerd, *Illinois Dept. of Natural Resources*  
Todd Main, *Illinois Dept. of Natural Resources*

## Indiana

**Kari Bennett**, *Indiana Utility Regulatory Commission*  
Robert E. Carter, Jr., *Indiana Dept. of Natural Resources*  
Thomas W. Easterly, *Indiana Dept. of Environmental Management*  
Ron McAhrn, *Indiana Dept. of Natural Resources*  
Jody W. Peacock, *Ports of Indiana*

## Michigan

**Patricia Birkholz**, *Michigan Dept. of Environmental Quality*  
Bruce Rasher  
Hon. Bill Schuette, *Attorney General*  
Helen Taylor, *The Nature Conservancy*  
Hon. Rebekah Warren, *State Senator*

### Alternates

S. Peter Manning, *Dept. of the Attorney General*  
Dr. Roger Eberhardt, *Michigan Dept. of Natural Resources and Environment*

## Minnesota

**Hon. Thomas Huntley**, *State Representative*  
Hon. Carolyn McElfratrick, *State Representative*  
Lt. Gov. Yvonne Prettner Solon  
Hon. Ann Rest, *State Senator*

### Alternates

Dick Lambert, *Minnesota Dept. of Transportation*

## New York

**Joseph Martens**, *New York State Dept. of Environmental Conservation*  
James M. Tierney, *New York State Dept. of Environmental Conservation*  
Donald Zelazny, *New York State Dept. of Environmental Conservation*

## Ohio

**James Zehringer**, *Ohio Dept. of Natural Resources*  
Hon. John Eklund, *State Senator*  
Scott J. Nally, *Ohio Environmental Protection Agency*  
Hon. Dennis Murray, *State Representative*  
James Weakley, *Lake Carriers' Association*

### Alternates

John D. Baker, *International Longshoremen's Association*  
Gail Hesse, *Ohio Lake Erie Commission*

## Ontario

**William Carr**, *Office of International Relations and Protocol*  
Rosalyn Lawrence, *Ministry of Natural Resources*  
Paul Evans, *Ministry of the Environment*  
Scott Thompson, *Ministry of Transportation*

### Alternates

Sharon Bailey, *Ministry of the Environment*  
Eric Boysen, *Ministry of Natural Resources*  
Linda McAusland, *Ministry of Transportation*  
Ranissah Samah, *Office of International Relations and Protocol*

## Pennsylvania

**Kelly Burch**, *Pennsylvania Dept. of Environmental Protection*  
Robert W. Light, *Penn State Behrend*  
Pat Lupo, *Earth Action*

### Alternates

John Booser, *Pennsylvania Dept. of Environmental Protection*  
Lori A. Boughton, *Pennsylvania Dept. of Environmental Protection*  
John T. Hines, *Pennsylvania Dept. of Environmental Protection*

## Québec

**Eric Marquis**, *Québec Government Representative in Chicago*  
Danielle Provost, *Division of Intergovernmental Affairs*  
Nathalie Camden, *Ministère des Ressources naturelles et de la Faune*  
Marc Gagnon, *Fednav Limited*  
Josée Hallé, *Ministry of Transportation*

### Alternates

Marcel Bernard, *Ministère des Ressources naturelles et de la Faune*  
Eve Joseph, *Ministère des Transports du Québec*  
Louise Lapierre, *Ministry of Sustainable Development, Environment and Parks*

## Wisconsin

**Kenneth Johnson**, *Wisconsin Dept. of Natural Resources*

### Alternate

Steve Galarneau, *Wisconsin Dept. of Natural Resources*

---

Commissioners as of December 2012.  
Delegation chairs are in bold.



Great Lakes Commission staff in Ann Arbor, Mich.

## Observers

Alliance for the Great Lakes, Joel Brammeier  
Canadian Embassy, Christina Jutzi  
Chippewa Ottawa Resource Authority, Mike Ripley  
Coastal States Organization, Kristen Fletcher  
Council of Great Lakes Governors, David Nafziger  
Council of Great Lakes Industries, George Kuper  
Ducks Unlimited, Gildo M. Tori  
John G. Shedd Aquarium, Jim Robinett  
Great Lakes and St. Lawrence Cities Initiative, David Ullrich  
Great Lakes Environmental Law Center, Nick Schroeck  
Great Lakes Fishery Commission, Christopher Goddard  
Great Lakes Observing System, Jennifer Read  
Great Lakes Sea Grant Network, Jeff Gunderson  
Great Lakes United, Jennifer Nalbome  
Helsinki Commission, Anne Christine Brusendorff  
International Joint Commission, Dr. Saad Y. Jasim  
Maritime Administration, Great Lakes Region, Floyd Miras  
National Association of Conservation Districts, Donald Lloyd  
National Oceanic and Atmospheric Administration,  
Great Lakes Environmental Research Laboratory, Marie C. Colton  
NOAA Office of Ocean and Coastal Resource Management, David Kennedy  
National Park Service, Gary Vequist  
National Wildlife Federation, Andy Buchsbaum  
St. Lawrence Seaway Development Corp., Collister (Terry) Johnson, Jr.  
The Nature Conservancy (Michigan Chapter), Richard Bowman  
U.S. Army Corps of Engineers, Jan Miller  
U.S. Coast Guard, Ninth Coast Guard District, Radm. Michael N. Parks  
U.S. Department of Agriculture, Natural Resources Conservation Service,  
Terry Cosby  
U.S. Department of Energy, John R. Gasper  
U.S. Environmental Protection Agency, Great Lakes National  
Program Office, Chris Korleski  
U.S. Fish and Wildlife Service, Craig Czarnecki  
U.S. Geological Survey, Russell Strach

## Great Lakes Commission staff

Front row (from left): Geneviève Layton-Cartier, Christine Manninen, Guan Wang, Amanda Sweetman, Heather Braun, Laura Kaminski, Erika Jensen, Becky Pearson, Pat Gable.  
Middle row: Joe Bertram, Frank Cardone, Matt Doss, Michael Schneider, Stuart Eddy, Sophie Taddeo, Gary Overmier, Tim Eder, Vitaly Peker, Victoria Pebbles, Laura Andrews.  
Back row: Dave Knight, Jeff McAulay, Tom Crane.

---

## Credits

Copyright ©2013 Great Lakes Commission

*Designer:* Laura Andrews

*Managing Editor:* Christine Manninen

*Photo credits:* page 1 (cover), Lake Superior ©Gregory Bozick. Page 2, Newfane Marina ©[wikimedia/ Ad Meskens](#). Page 3, Lake Superior ©[flickr/ Mark Kortum](#). Pages 4-5, sailing ©[flickr/ Ian Iott](#); sport fishing ©[flickr/ Daryll T](#); paragliding ©[picasa/ Indiana Dunes Paragliding](#); USCG *Hollyhock* ©[flickr/ pverdonk](#). Pages 6-7, Door County ©Door County, Wis.; St. Lawrence River ©[wikimedia/ Datch78](#). Page 8 (back cover), Lake Ontario ©Eric Haberfellner.

---

The Great Lakes Commission is committed to minimizing the environmental impact of printed materials by using recycled paper with high post-consumer content and vegetable-based inks.

---





Sailing Lake Ontario from Port Dalhousie, Ont.

## About the Commission



The Great Lakes Commission was established in 1955 with a mandate to “promote the orderly, integrated and comprehensive development, use and conservation of the water resources of the Great Lakes basin.”

Founded in state law with U.S. federal consent, with membership consisting of the eight Great Lakes states and associate member status for the provinces of Ontario and Québec, the Commission pursues four primary functions: communication and education, information integration and reporting, facilitation and consensus building, and policy coordination and advocacy.

Each Member jurisdiction is represented by a delegation consisting of three to five members who are appointees of the respective governor or premier, legislators or senior agency officials. A board of directors, consisting of the chair of each delegation, is the Commission's executive body.

In carrying out its initiatives, the Commission works in close cooperation with many partner organizations, including U.S. and Canadian federal agencies, binational institutions, tribal/First Nation governments and other regional interests. Representatives appointed by partner entities participate extensively in Commission activities through a formal Observer program. The Commission is supported by a professional staff in Ann Arbor, Mich.