



# **Great Lakes Green Infrastructure Champions Mini-Grant RFP**

**RFP OVERVIEW AND Q&A WEBINAR • JUNE 13 AND JULY 10, 2017**

---



Fred A. and Barbara M.  
Erb Family Foundation

# Great Lakes Green Infrastructure Champions Program and Mini-Grants--Overview

- Purpose: to increase green infrastructure implementation capacity in the Great Lakes Basin by supporting selected emerging communities with grants up to \$20,000 USD.
  - \$20,000 is the maximum; no minimum
- Mini-grants are part of a larger project called the [Great Lakes Green Infrastructure Champions Pilot Program](#)
  - Purpose: to catalyze the adoption of green infrastructure (GI) practices and policies across the region by providing mid-sized municipalities with resources they frequently lack.

# Definition

***Green infrastructure:*** the use of natural systems to manage stormwater and mitigate water quality issues

# Definitions cont'd

- ***Pioneer champions (mentors)***: individuals have been successfully implementing green infrastructure in their community
  - Has a dedicated stormwater management professional
  - has completed multiple GI installation projects; or
  - Has implemented policy initiatives (e.g., by-laws or ordinances) to advance green infrastructure
- ***Emerging Champion (mentees)***: individuals that are eager and able (e.g., through their job) to remove barriers and build capacity for green infrastructure
  - Small to mid-sized community
  - Not previously engaged in GI
  - Known challenges to advancing GI in their community

# Eligibility

- Applicants:
  - U.S. or Canadian municipalities with fewer than 500,000 people
  - Regional authorities or registered non-profit organizations serving eligible municipalities (i.e., regions with population less than 500,000)
    - Must show how you plan on working with the eligible communities you serve
  - MS4 communities in the United States *if the requested project funding does not cover regulated actions*
  - Demonstrate a commitment to participate in the Champions Peer-to-Peer Mentorship Network
- Geography: must be located within the binational Great Lakes basin, (United States and Canada)

# Eligible Projects

- Pilot installations (e.g., rain gardens, vegetated roofs, rainwater harvesting systems, bioswales, porous pavement, street trees, etc.)
  - Development of strategic partnerships and/or alliances
  - Removal of institutional or policy barriers
    - assessment and clarification of local roles and responsibilities
    - development or review of local design standards, by-laws, or ordinances
- ***Policy, planning or educational programming is ok if .....***
- ✓ ***it demonstrates how the project will overcome actual barriers and facilitate GI installation in the community.***

# ***Not Eligible***

- Projects that are required as part of permit obligations or legal judgement
- State and provincial government agencies
- Outside binational Great Lakes basin
- Communities with population over 500,000

# Looking For Projects That....

Are proposed by **Emerging Champions** who are eager to remove barriers and build capacity expanding GI implementation in their community/sphere of influence and will be mentees in the Champions Network



# Looking For Projects That....

- Respond to known GI implementation challenges
- Have broad stakeholder support
- **Will benefit from being paired with a GI Pioneer Champion as part of a Great Lakes Green Infrastructure Peer-to-Peer Mentoring Network**
- Will have lasting impact after grant funding ends
  - maintenance or monitoring plan (for implementation projects)
  - A timeline for phased implementation of a larger green infrastructure planning effort; or
  - continued dissemination of educational materials through municipal websites or workshops (for other projects).

# More about the Mentoring Program

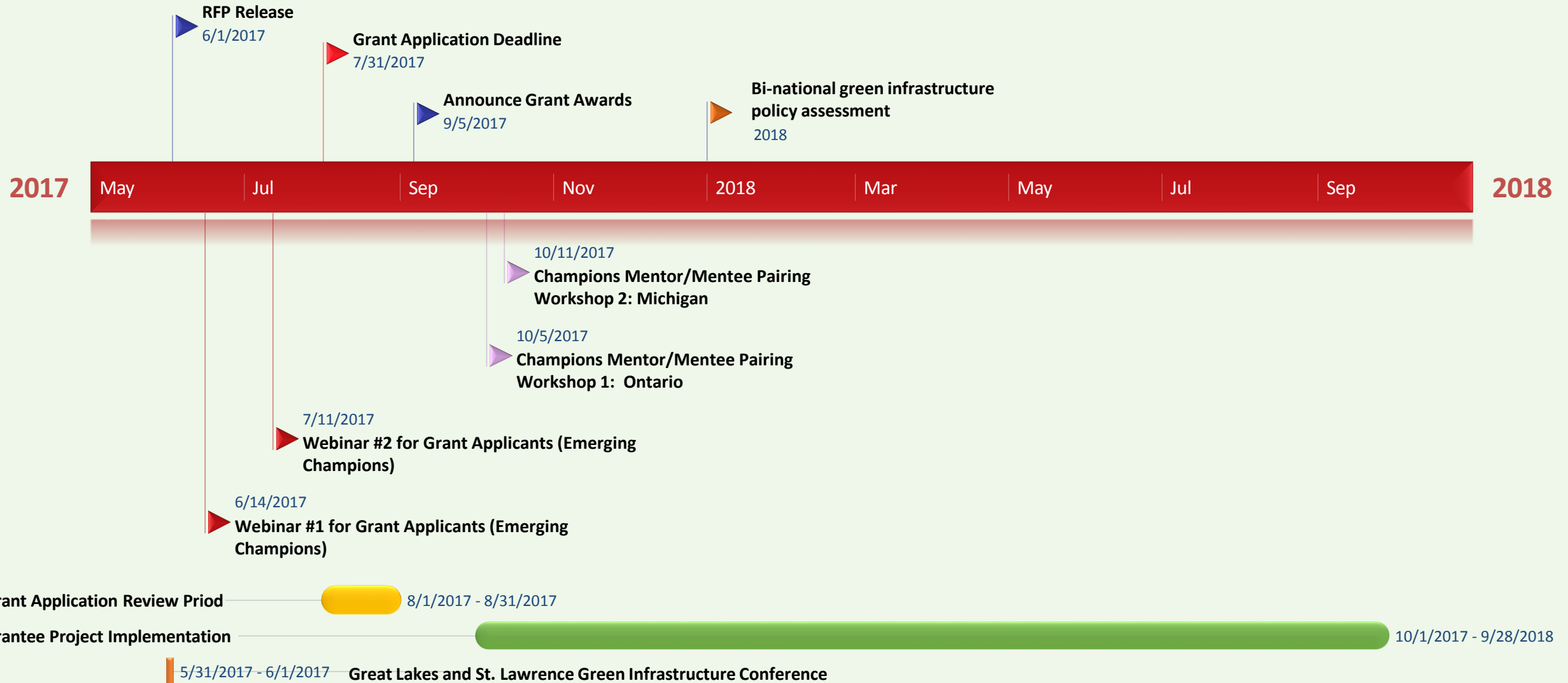
- Must agree to be a mentee if receive mini-grant
- Can still be a mentee (Emerging Champ) without a mini-grant
- How It Works
  1. Emerging Champions complete an [Emerging Champion Needs](#) Form
  2. GLC pairs Emerging Champion with one or more Pioneer Champions based on needs
  3. Mentors and Mentees sign a [Mentoring Agreement](#) that:
    - describes the type of mentoring services that will be provided
    - Runs through August 2018

# Emerging Champions/mentees agree to:

- Share technical, institutional, political and/or financial challenges to GI implementation with their mentor at least once a month through email
- Schedule periodic (e.g., monthly) call with their mentor to discuss the challenges identified in email, ask specific questions, and get advice and guidance on how to overcome those challenges
- Participate in quarterly webinars to share their mentoring experience with others in the Champions Network

# Pioneer Champions/mentors agree to:

- Respond to regular monthly emails from mentee in writing
- Respond to periodic calls, emails, or texts as agreed to with mentee
- Participate in periodic conference calls with their mentee to discuss challenges, answer questions, provide guidance and feedback as desired by mentee.
- Participate in quarterly webinars to share their mentoring experience with others in the Champions Network
- Provide feedback on written materials, such as proposals, talking points, articles, power point presentations, etc. to assist mentee with GI implementation
- Complete a quarterly report to the GI Champions Network and provide a 2-page assessment and recommendation for mentee at the end of the mentorship agreement that recommends next steps for scaling up GI in that community



# Questions?

<http://www.glc.org/work/champions/network>

Contact: [gichampions@glc.org](mailto:gichampions@glc.org)