



Walnut Creek: Bridging the gap between Environmental Quality and Community Development

Walnut Creek Restoration Project



Sport Fishery



Community Water Supply



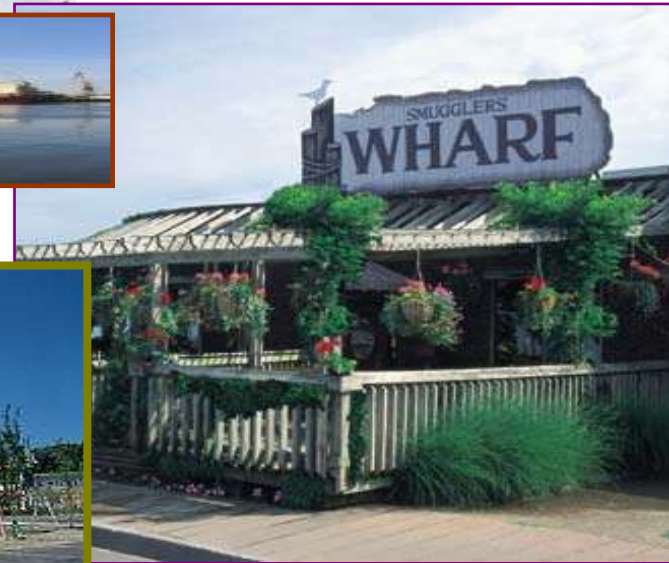
Tributary to Lake Erie



Public Recreation



Economic Engine



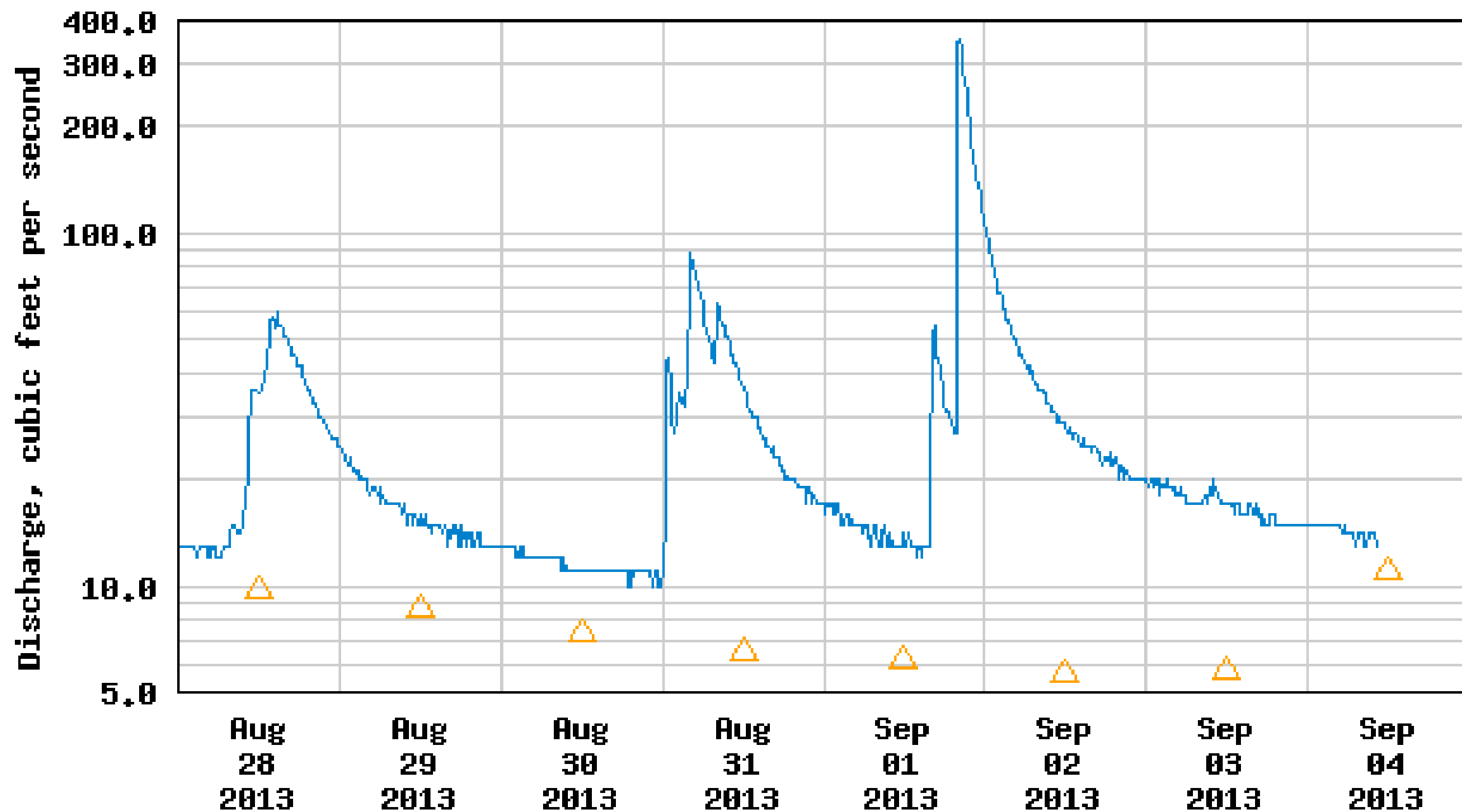




Watershed Assessment



USGS 04213152 Walnut Creek Upstream Pool, near Erie, PA



----- Provisional Data Subject to Revision -----

△ Median daily statistic (5 years) — Discharge

Restoration Plan Goals

1. Reduce *E. coli* bacteria levels;
2. Implement Source Water Protection Programs;
3. By 2019, attain all designated stream uses and water quality standards;
4. Restore wetlands and stream riparian areas to predevelopment conditions, and;
5. Reduce the overall rate, volume and pollutant loading of urban stormwater runoff.

Restoration Plan



PENNVEST

Pennsylvania Investment Authority

Independent Authority formed in 1988 to provide financial aid to help solve water quality issues in Pennsylvania.

\$130,334,049 has been awarded in Erie County to date for drinking water, wastewater, storm water, and non-point sources projects.

Viable solution to address legacy stormwater problems in the Walnut Creek watershed.

Results





Kelly Burch

PA Department of Environmental

Protection