

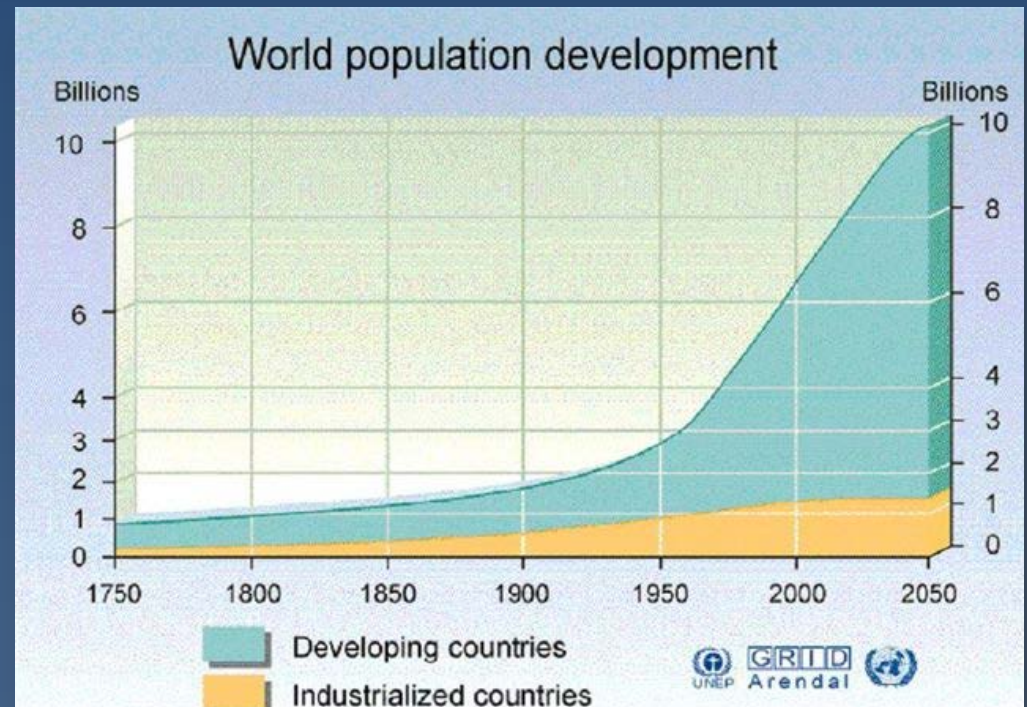
Conservation Through Partnerships in the Great Lakes

Ann Mills
Deputy Under Secretary for Natural
Resources
And
Environment

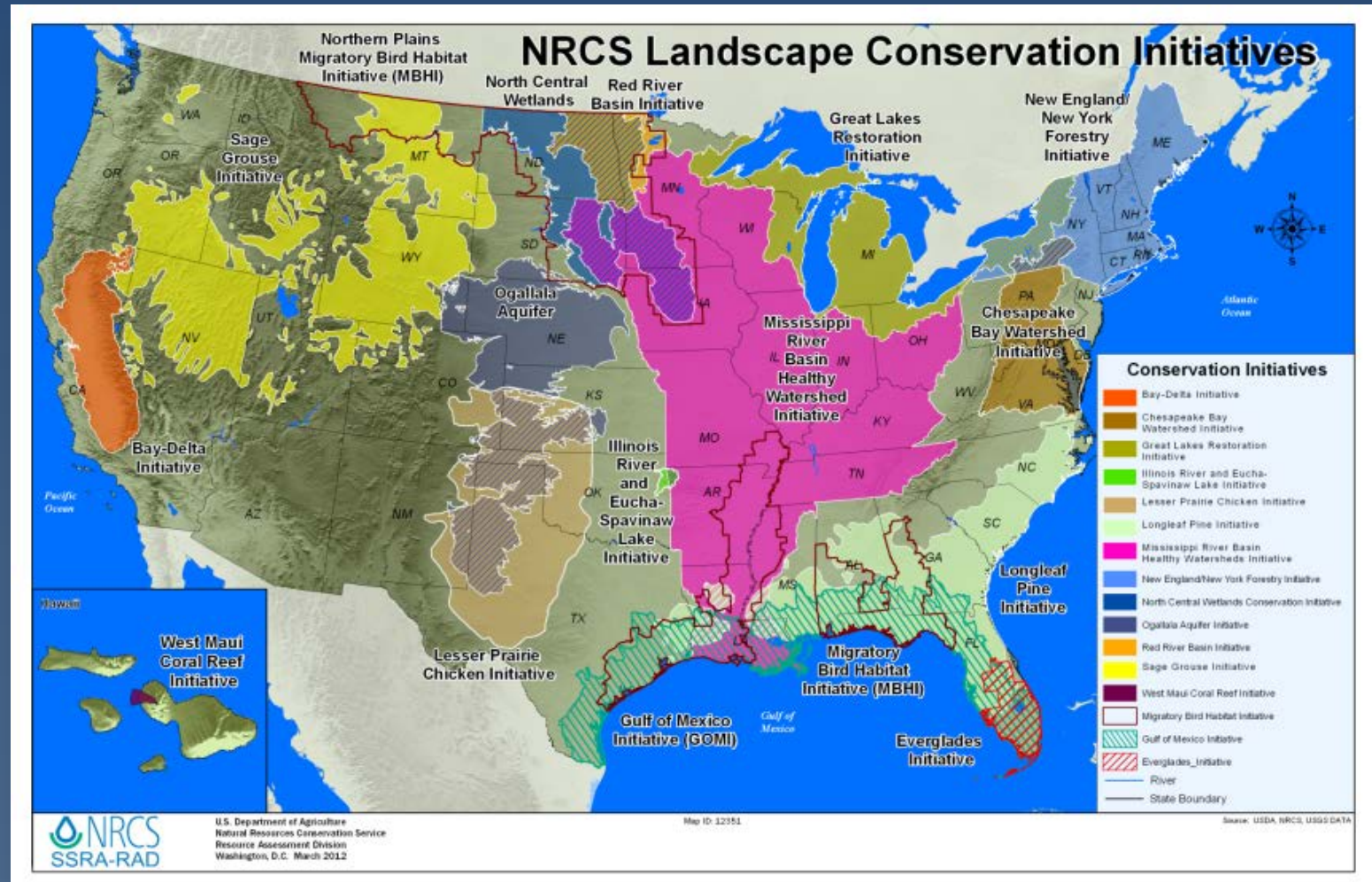
Food for thought...

- 2.4 B more people by 2050
- 63 M fewer acres since 1982
- 70% increase in ag output

Challenge:
Sustainable
intensification of
agricultural production



GLRI is one of 19 Landscape Conservation Initiatives implemented by NRCS



Great Lakes Restoration Initiative

<u>USDA Agency</u>	<u>FY 10</u>	<u>FY11</u>	<u>FY12</u>	<u>Total</u>
APHIS	\$1,885,000	\$637,000	\$1,100,000	\$3,622,000
FS	\$15,458,000	\$8,890,000	\$6,700,000	\$31,048,000
NRCS	\$34,092,000	\$16,788,000	\$24,200,000	<u>\$75,080,000</u>
TOTAL				\$109,750,000

Great Lakes Commission 2010 - 2012

- 3 Cooperative Agreements to implement GLRI priorities through GLC's **Soil Erosion and Sediment Control Project.**
- Total funding > \$10 million



Great Lakes Commission (NRCS GLRI)

GLC has granted \$ 8.7 million (M) to 29 projects through the Soil Erosion and Sediment Control Program

- 2010 - \$4.3 M to 9 Projects
- 2011 - \$2.3 M to 7 Projects
- 2012 - \$2.07 M to 13 Projects



Great Lakes Commission

- Results:
 - 1.6 M tons of soil prevented from entering the Great Lakes and tributaries
 - 1.6 M pounds of phosphorus prevented from entering the Great Lakes & tributaries.
 - 3.2 M pounds of nitrogen prevented from entering the Great Lakes & tributaries.

NRCS Success stories from the GLRI Area



Before

Field Border (Buffer)
installed in Michigan



After

NRCS Success stories from the GLRI Area



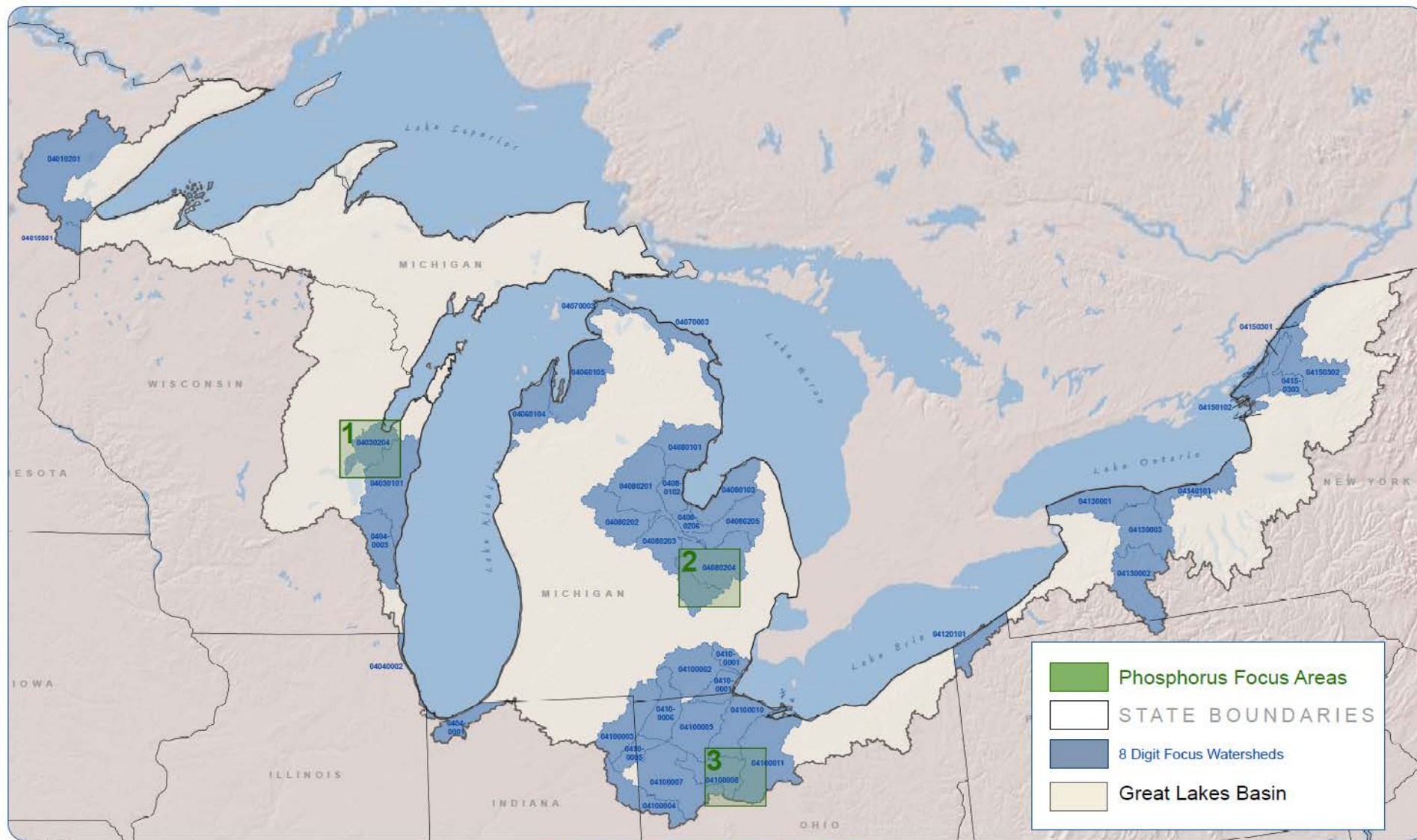
Before

Barnyard project
installed in New York



After

Great Lakes Restoration Initiative (GLRI) Priority Watersheds Fiscal Year 2012



GLRI 2012 8 digit Priority Watershed Locations

Phosphorus Reduction Watersheds

Collaboration with NRCS, EPA and USGS

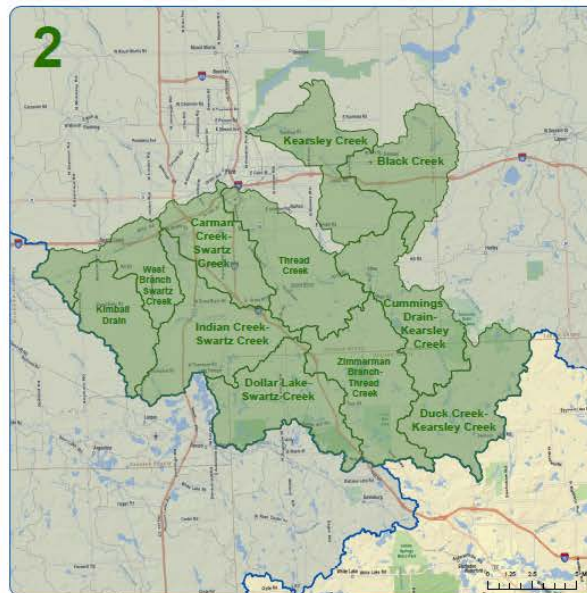
Watersheds selected based on existing water quality among other factors

Progress in 2012:

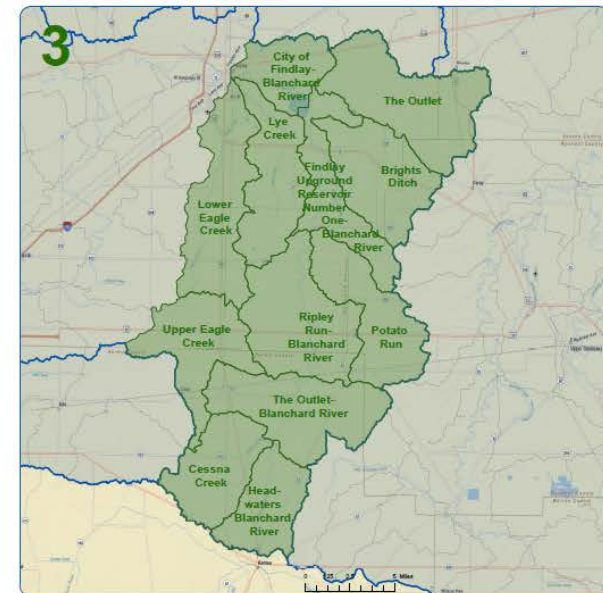
- ⦿ We have had two ranking periods for NRCS's programs.
- ⦿ We have established edge-of-field monitoring sites.
- ⦿ We have started discussions about expanding watershed areas for implementation



Lower Fox River 12 digit HUC Phosphorus Reduction Focus Areas



Saginaw River 12 digit HUC Phosphorus Reduction Focus Areas



Blanchard River 12 digit HUC Phosphorus Reduction Focus Areas

National Water Quality Initiative (NWQI)

- **Goal:** Remove streams and other water bodies
 - from 303d list, or
 - from threatened status, or
 - from contributing to impairments, or
 - to adequately address a TMDL plan.
- NWQI addresses agricultural sources of pollution that NRCS can effectively address through voluntary action of producers:
 - Nutrients
 - Sediment
 - Pathogens (new for FY 2013)

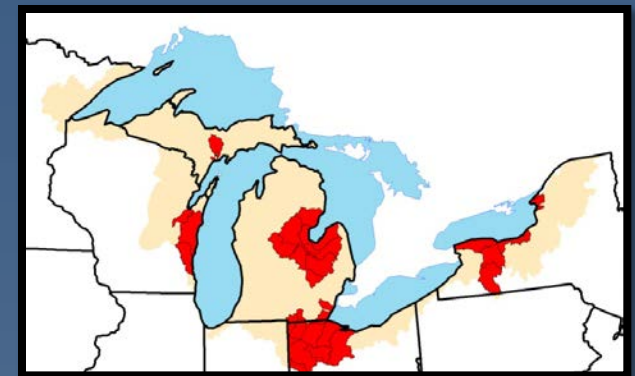


Progress Through NWQI (FY 2012)

- > **750 agreements** with landowners
- **154 small watersheds (12-digit HUC)**
 - 128 have water quality monitoring stations
 - 82 have 319 projects
 - 68 within Landscape Conservation Initiatives
- **160,000 acres** of targeted conservation under contract or agreement in FY 2012
- > **\$38 million** obligated in FY 2012

Strategic Watershed Action Teams (SWATS)

- Six SWATs
- \$1.1 million USDA + \$366,684 (25%) partner match in Contribution Agreements
- > 30 staff years over several years



Monitoring & Assessment :

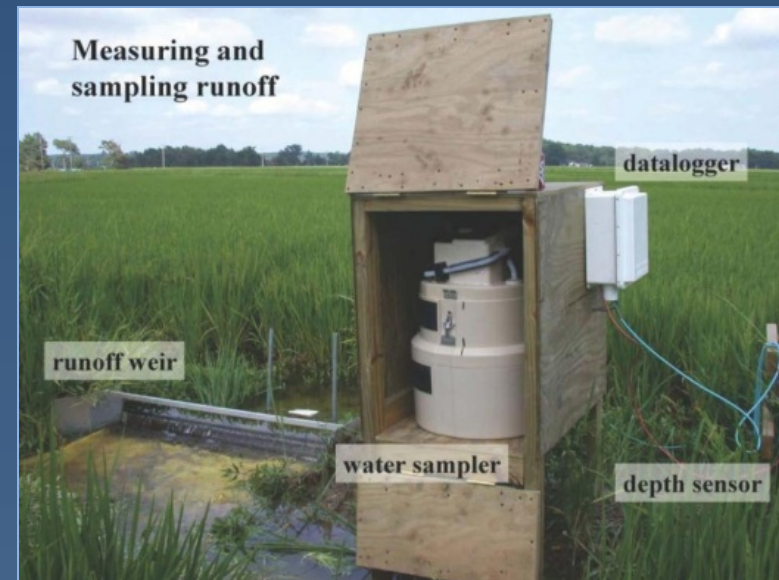
New 3-Tiered monitoring and evaluation activity

- To assess environmental outcomes
- Help farmers use adaptive management
 1. Edge-of-field
 2. In-stream
 3. Watershed level (Pour point)
- NRCS cost-shares on edge-of-field monitoring
- Partners help with monitoring stations
- Partners help cover producers' share of cost
- Partners perform the in-stream and watershed-level monitoring and evaluation

NRCS Edge-of-Field Monitoring and Evaluation

Purposes of Practice

- Provide site-specific field data for input into models to predict practice/system performance and to validate the models
- Sample and measure practice/system performance
- Collect and evaluate data for adaptive management by producer



USGS NRCS Edge-of-Field Monitoring and Evaluation

USGS and NRCS worked together to get monitoring installations on-the-ground and collaborating to get producer buy-in for this effort.



Certainty is a partnership tool to:

- Accelerated voluntary conservation
- Provide reasonable assurance that conservation systems will satisfy current or future regulations for a prescribed timeframe
- Recognize sound environmental stewardship
- Foster innovation



Certainty Progress Across the Country

- ◎ Certainty programs for water quality existing or in progress: Minnesota, Virginia, Texas, Michigan, Maryland and Delaware
- ◎ Under consideration: Vermont, Oregon, Oklahoma, Arkansas and Louisiana



Benefits to Producer

- Improve natural resource sustainability (on-and off-farm)
- Provide piece of mind for fixed period of time
- Maintain priority access to technical and financial assistance
- Increase recognition of farmers role in conservation
- Marketability (labeling)
- Environmental services opportunities
- Reduced insurance rates? Improved access to loans?



The U.S. Department of Agriculture (USDA) prohibits discrimination in all its programs and activities on the basis of race, color, national origin, sex, religion, age, disability, political beliefs, sexual orientation, and marital or family status. (Not all prohibited bases apply to all programs.) Persons with disabilities who require alternative means for communication of program information (Braille, large print, audiotape, etc.) should contact USDA's TARGET Center at (202) 720-2600 (voice and TDD). To file a complaint of discrimination write USDA, Director, Office of Civil Rights, Room 326-W, Whitten Building, 14th and Independence Avenue, SW, Washington, DC 20250-9410 or call (202) 720-5964 (voice or TDD). USDA is an equal opportunity provider and employer.