

Great Lakes Coastal Wetlands Consortium: Inventory and Mapping

Ric Lawson

GLCWC Coordinator

Great Lakes Commission

October 16, 2002

Overview

- Background
- Inventory compilation
- Classification
- Change in area
- Next steps



Background

- Consortium determined the inventory to be a priority need
- Inventory of wetlands needed for:
 - Geographic reference for monitoring
 - Foundation of geographic database
 - Starting point for landscape analysis (change in area and land use indicators)

Background

- No currently complete inventory for the Great Lakes
- Several sub-regional inventories
- Data ownership and use issues


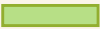
Inventory Compilation

- Inventory sources:
 - National Wetlands Inventory (MI, IL, IN, PA, NY)
 - Wisconsin Wetlands Inventory
 - Ohio inventory
 - Various federal and provincial sources in Canada
- GLC worked to secure inventory datasets from all sources

Inventory Compilation

- Limited data sharing arrangement with Wisconsin and Canadian data sets
- Gaps in coverage
- Variety in original data source resolution and timeframe

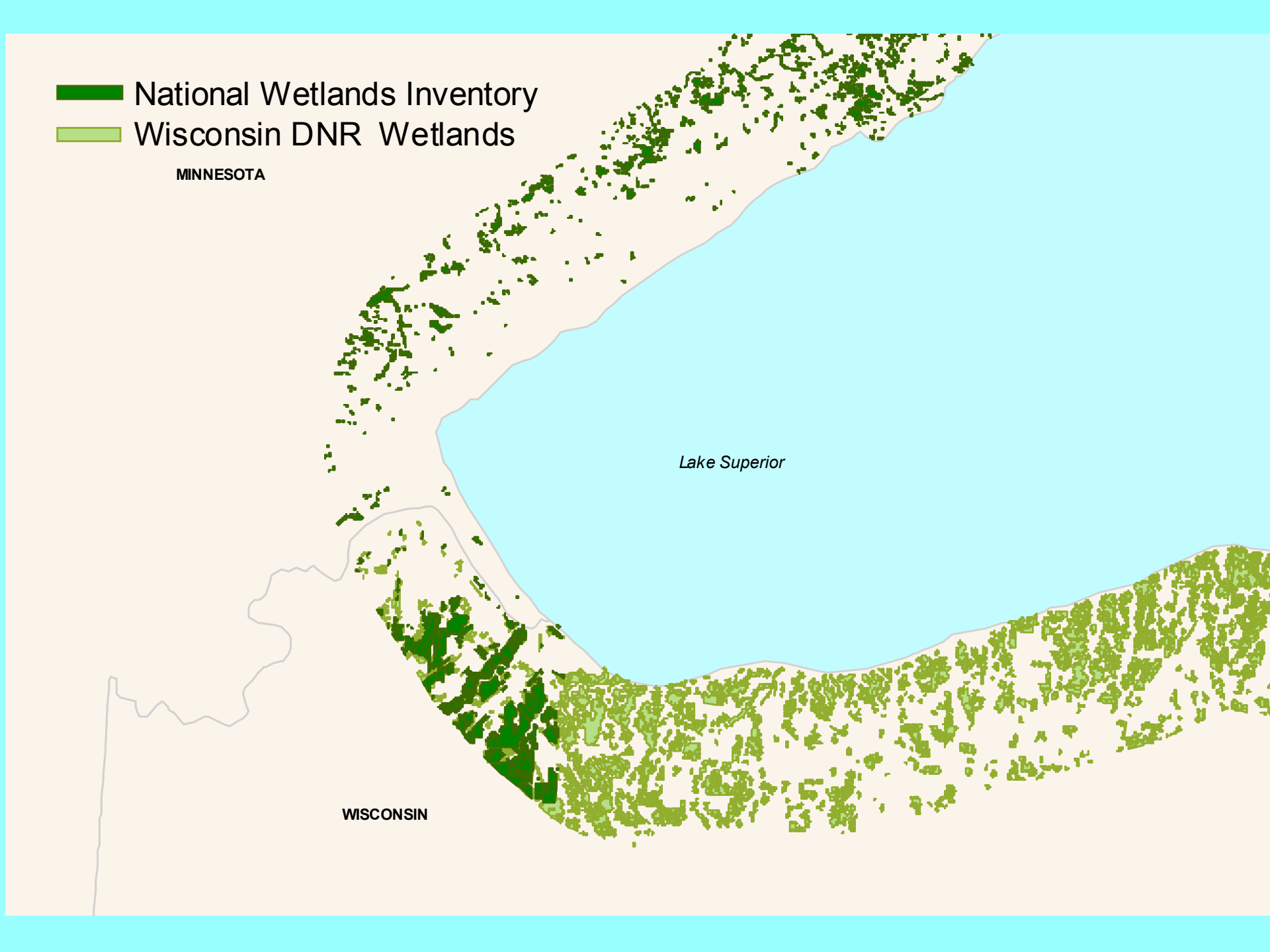


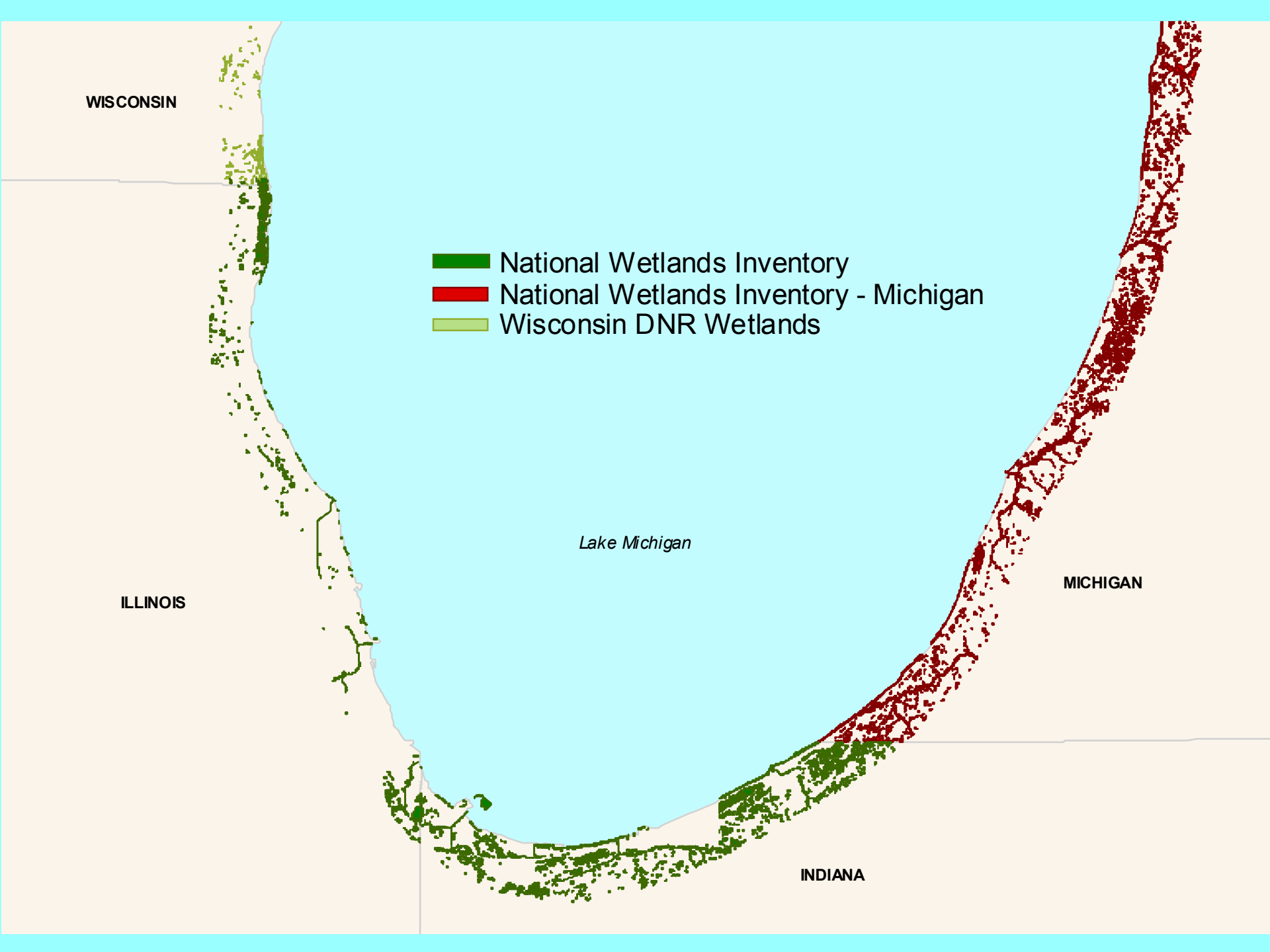
-  National Wetlands Inventory
-  Wisconsin DNR Wetlands

MINNESOTA

Lake Superior

WISCONSIN





WISCONSIN

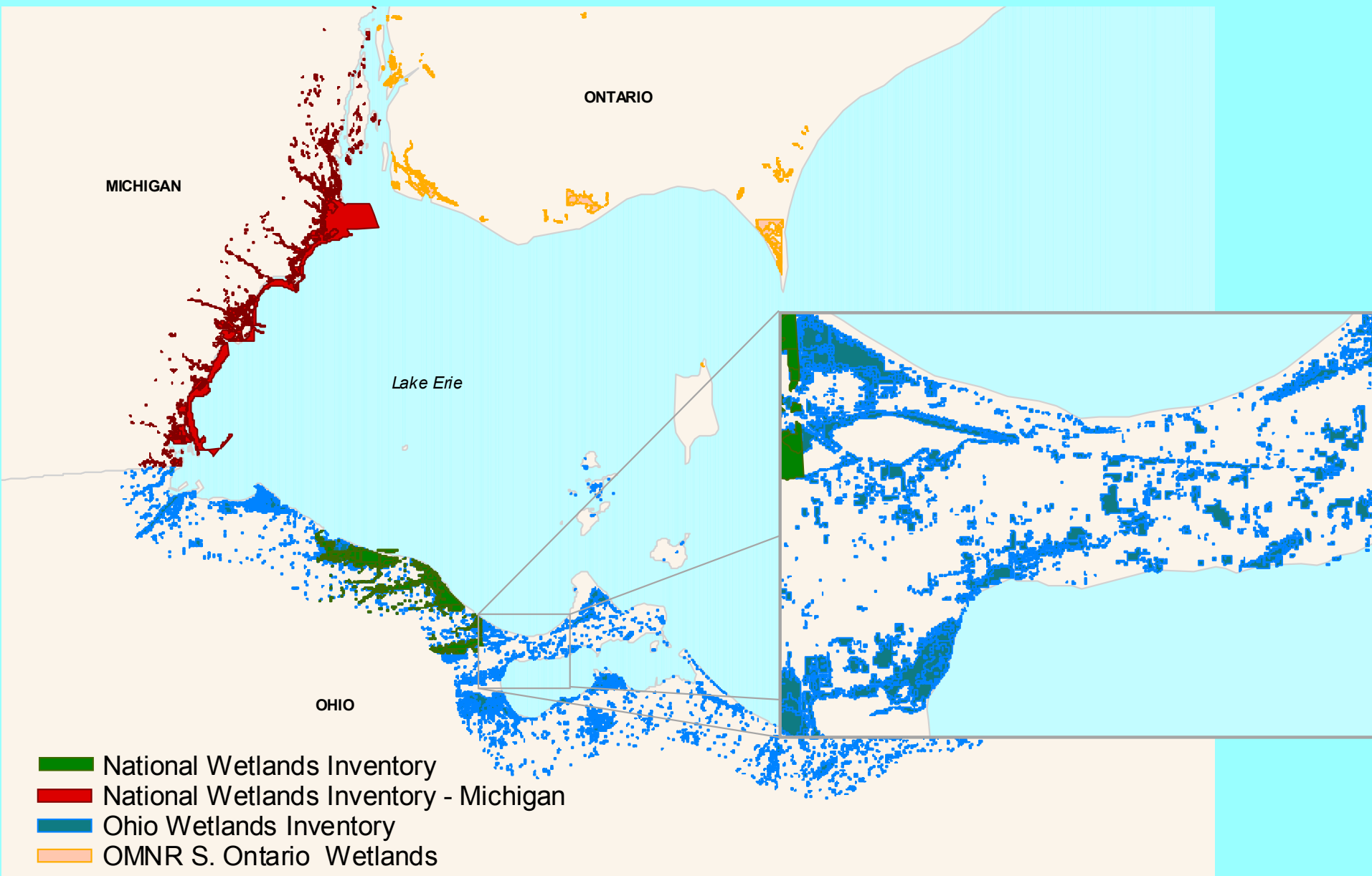
- National Wetlands Inventory
- National Wetlands Inventory - Michigan
- Wisconsin DNR Wetlands

Lake Michigan

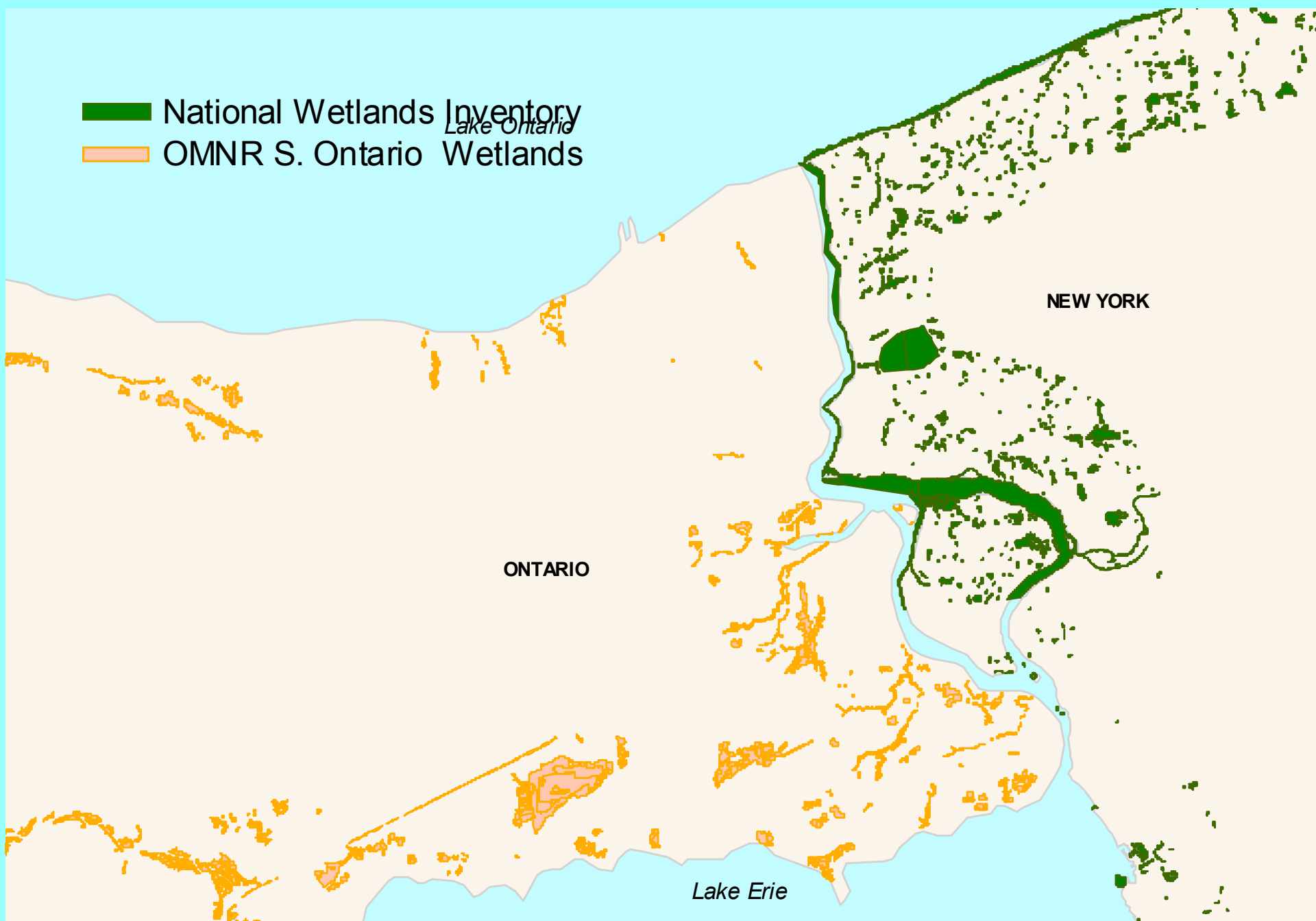
ILLINOIS

MICHIGAN

INDIANA



 National Wetlands Inventory
 OMNR S. Ontario Wetlands



Wetlands Classification

- Existing inventories utilize different classification systems
- Based on physical and biological components
- Consortium agreed to use a standard hydrogeomorphic (HGM) classification that includes 10 types
- This classification has not been applied to existing inventories
- Classification will allow for comparative analyses

Change in Area

- Important indicator for SOLEC and Consortium
- Current estimates of wetland area lack precision
- Requires repeated collection and analysis of remotely sensed information
- Can be referenced to and create update of the compiled inventory
- Data processing likely costly and time intensive

Next Steps

- Finalize project to classify inventory and fill in gaps
- Assess technologies and methods for estimating wetland area
- Determine funding and resource needs
- Conduct pilot test of selected methods