



Aquatic Invasive Species Annex 6 Implementation Update

**Great Lakes Panel
April 30, 2014 – Notre Dame University**

**Todd Turner – U.S. Fish and Wildlife Service
Gavin Christie – Fisheries and Oceans Canada**



GLWQA Annex 6 Aquatic Invasive Species Purpose

- Through this Annex the Parties shall establish a binational strategy to **prevent the introduction** of Aquatic Invasive Species (AIS), to **control or reduce the spread** of existing AIS, and to **eradicate, where feasible**, existing AIS within the Great Lakes Basin Ecosystem.

Subcommittee Membership

Subcommittee members *	Extended Subcommittee members
U.S. Fish and Wildlife Service Fisheries and Oceans Canada U.S. Environmental Protection Agency Ontario Ministry of Natural Resources Michigan Dept. Environmental Quality Minnesota Dept. of Natural Resources Ohio Dept. of Natural Resources New York Dept. of Environmental Conservation Great Lakes St. Lawrence Cities Initiative Great Lakes Indian Fish and Wildlife Commission Chippewa-Ottawa Resource Authority 1854 Treaty Authority First Nation / Metis – Chiefs of Ontario	National Oceanographic and Atmospheric Administration Great Lakes Commission Great Lakes Fisheries Commission Invasive Species Centre Canadian Aquatic Invasive Species Network Ontario Federation of Anglers and Hunters The Nature Conservancy

* Includes members from the **Great Lakes Panel on ANS** and the **Council of Lake Committees**

Subcommittee Structure

Annex 6 Subcommittee
Extended Subcommittee



Annex 6: Aquatic Invasive Species

Priorities for Action:

- By 2015, develop and implement an early detection and rapid response initiative that coordinates effective domestic and, when necessary, binational response to prevent AIS from becoming established in the Great Lakes.

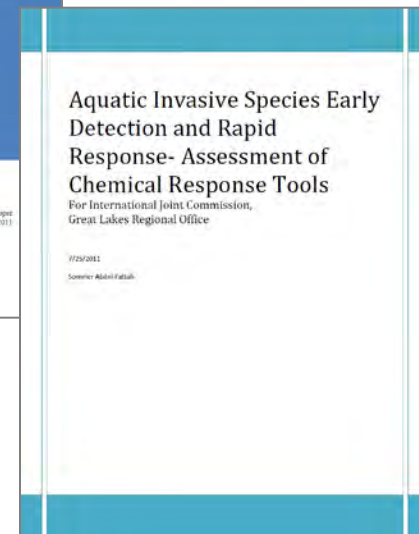
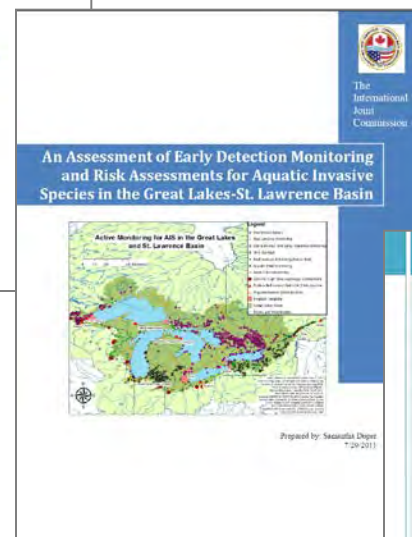
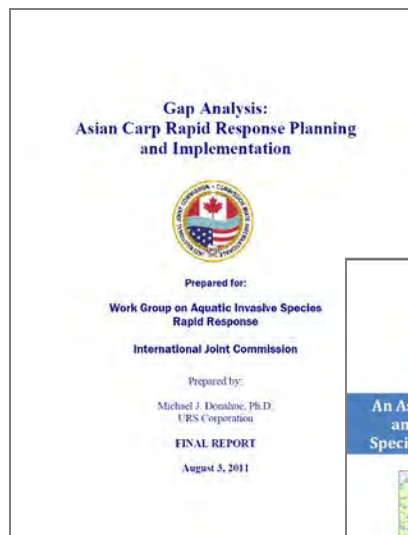


Update on Annex 6 Tasks

Priority / GLWQA commitment: *A comprehensive response initiative for the Great Lakes by 2015*

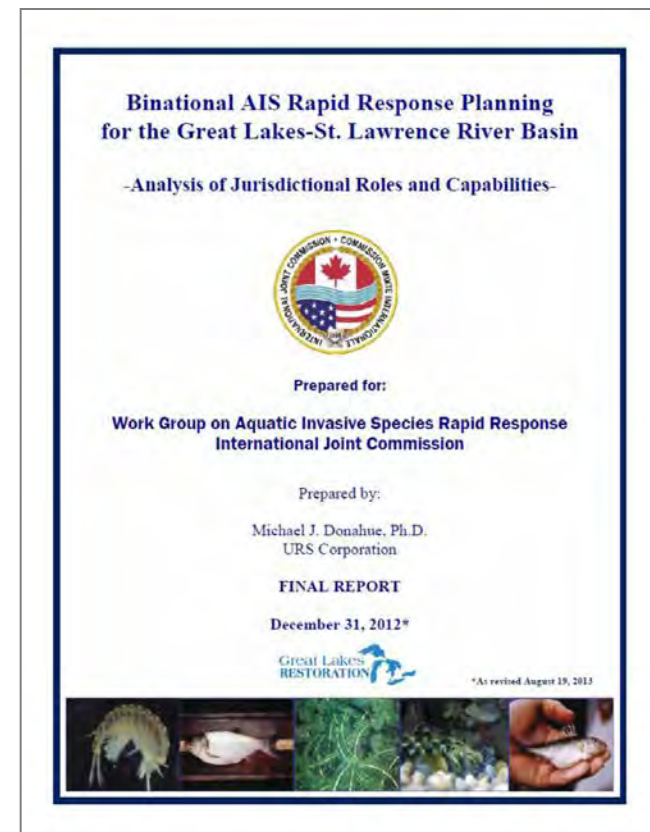
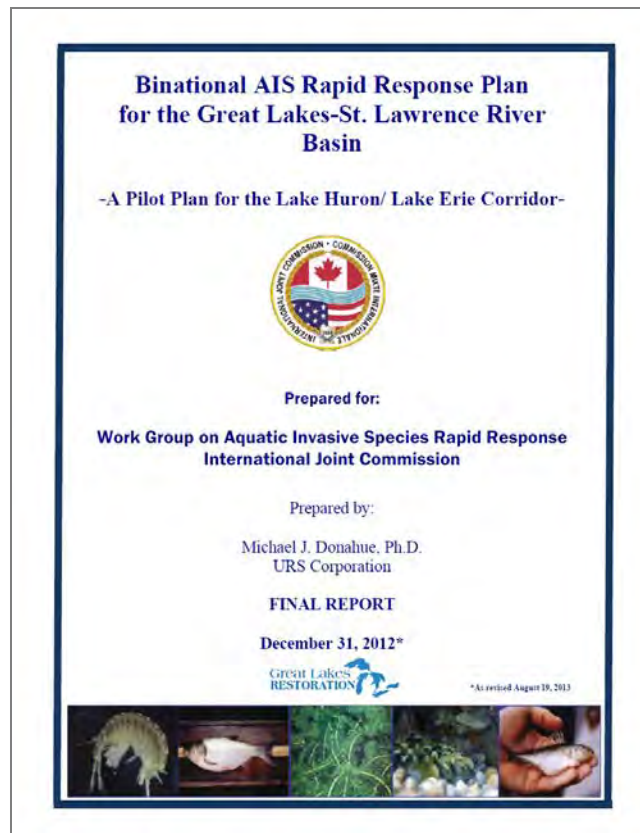
Activity	Status and Next Steps
Response plan development – Pilot Plan	<ul style="list-style-type: none">• Developed through GLRIS/IJC• Test / Develop basin-wide framework
Exercise options -	<ul style="list-style-type: none">• Huron-Erie – Asian carps• St. Lawrence – Invertebrate / vessel• Lake Michigan / CAWS - Ruffe
Binational response plan exercise – Huron-Erie Corridor	<ul style="list-style-type: none">• Asian carps• May 21-22, 2014
Inventory of response plans by jurisdiction	
Governors and Premiers Mutual Aid agreement	<ul style="list-style-type: none">• Foundation for shared response
Reporting of results of response planning exercises or actual response actions	

IJC Aquatic Invasive Species Rapid Response - 2009-2011 Priority Cycle



Binational Response Plan

a pilot approach



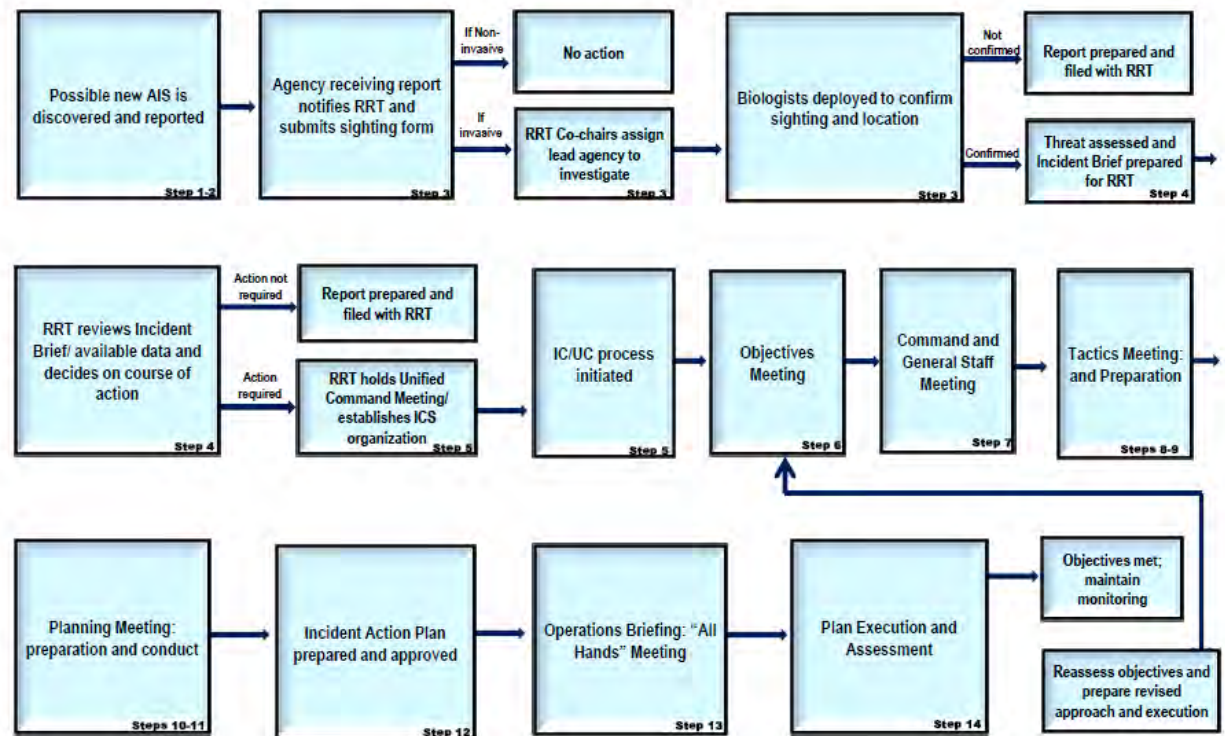
Binational Response Plan

a pilot approach

Planning Process



Figure 1
AIS Rapid Response Flow Chart
(Process Overview with Planning "P" Steps Identified)

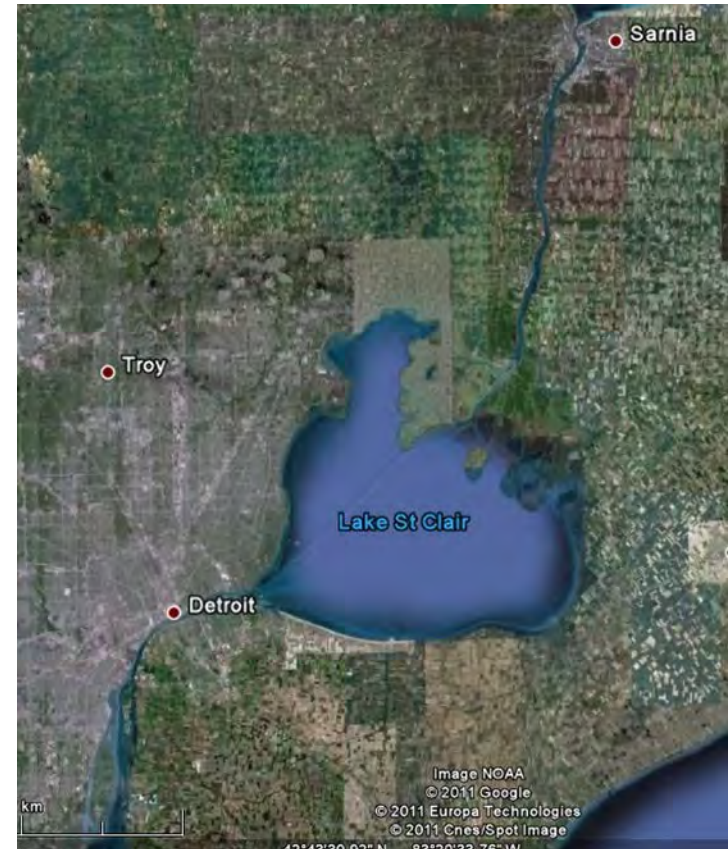




Binational Response Plan

a pilot approach

- Huron-Erie Corridor
 - High risk
 - Multi-jurisdictions
- May 21-22 Exercise
 - ACRCC / GLRI / Annex 6
 - Pilot Response Plan
 - Incident Command and Planning P process
 - Context - Ontario and Michigan Response Plans



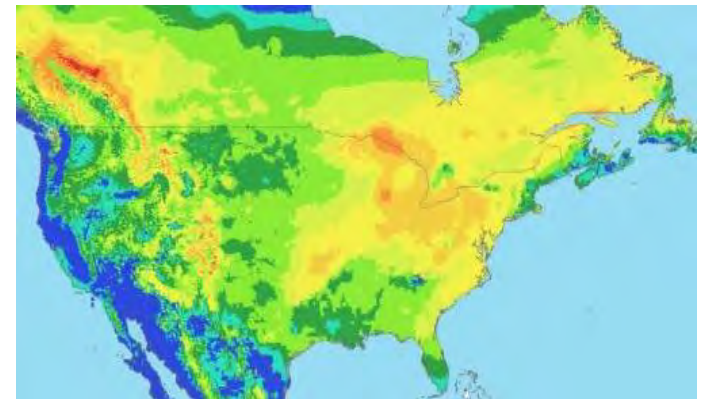
Annex 6: Aquatic Invasive Species

Priorities for Science:

- Undertake ecological assessments of Aquatic Invasive Species (AIS) prevention programs.
- Develop and evaluate early AIS detection technologies and methods.
- Research and develop technologies and methods for control and eradication of AIS.
- Determine the effects of habitat and climate change on risks of AIS establishment.
- Implement and evaluate risk assessments of species, pathways, and vectors of AIS.



eDNA for early detection



Climate change and invasion risk through 2080

Update on Annex 6 Tasks

Priority / GLWQA commitment: *Prevent introduction through outreach and communication programs*

Activity	Status and Next Steps
Share education and outreach programs and materials	<ul style="list-style-type: none">• Success of GL Panel Information and Education Committee• Ontario / Invasive Species Centre Compendium• Stop Aquatic Hitchhikers!• Habitattitude
Conduct an evaluation of education and outreach efforts in the Great Lakes Basin	<ul style="list-style-type: none">• I&E major program evaluation tool• Member input – review at next Panel meeting• Published and unpublished surveys and analyses – e.g. MN and MI
Identify shared efforts or new initiatives to enhance education and outreach	



A satellite image of Earth from space, showing the Gulf of Mexico and surrounding landmasses. The Gulf is a large, light blue body of water, and the surrounding land is a mix of green and brown. The Earth's curvature is visible at the top of the image, with a thin blue line representing the atmosphere.

Thank you

Image courtesy of the Image Science & Analysis Laboratory, NASA Johnson Space Center