

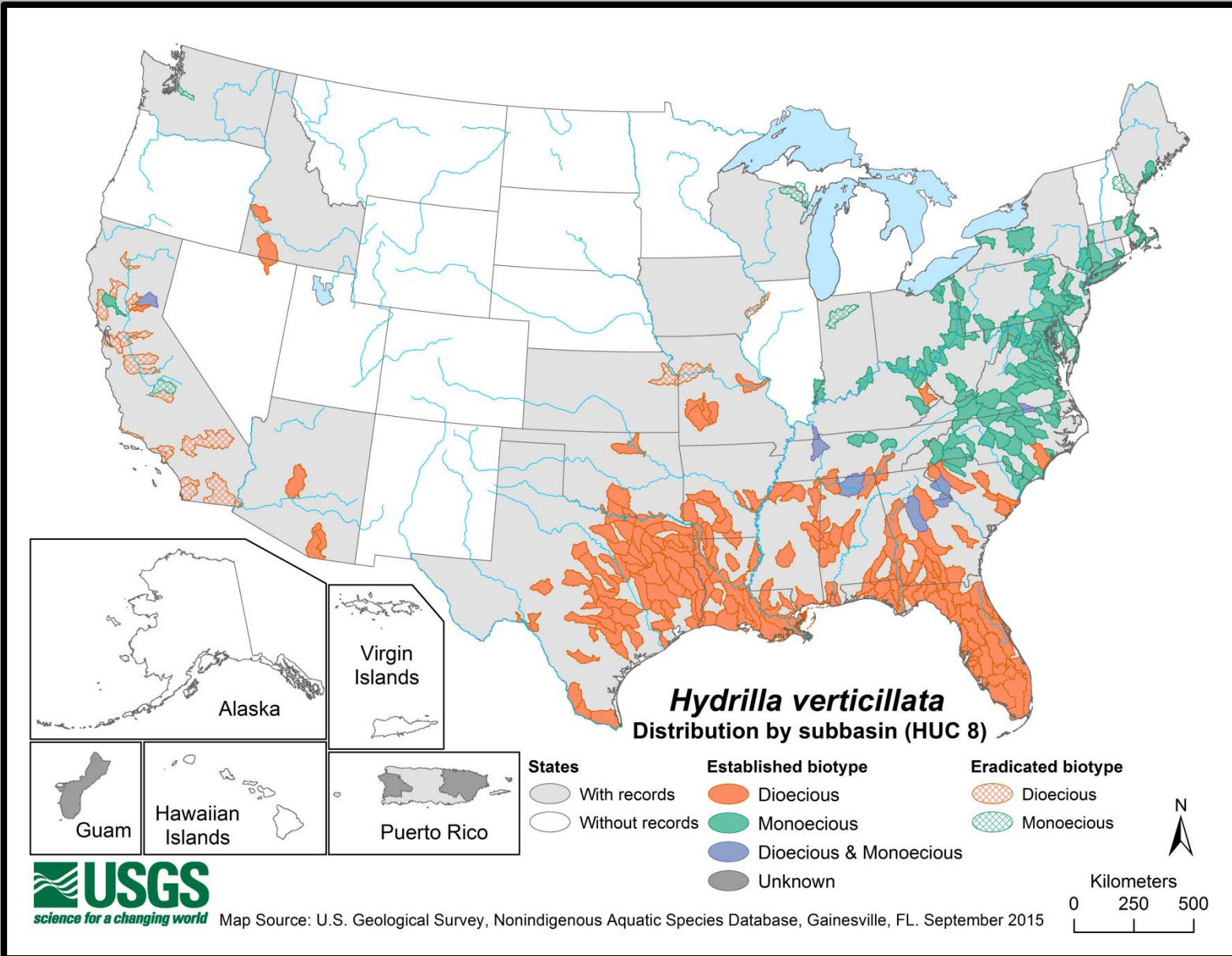
Ohio's Response to Hydrilla

To Conserve and improve **Fish** and **Wildlife** resources and their **Habitats** for sustainable use and appreciation by all



John Navarro
Fish Management and Research

Current Distribution



Three Hydrilla Scenarios

1. **Ohio River:** Large open system outside Lake Erie watershed
2. **Pymatuning Lake:** Large closed system close to Lake Erie watershed
3. **Cleveland Metroparks:** Small closed systems within Lake Erie watershed



Ohio River



jimgrey.net

TNC – Rapid Assessment for Invasive Plants



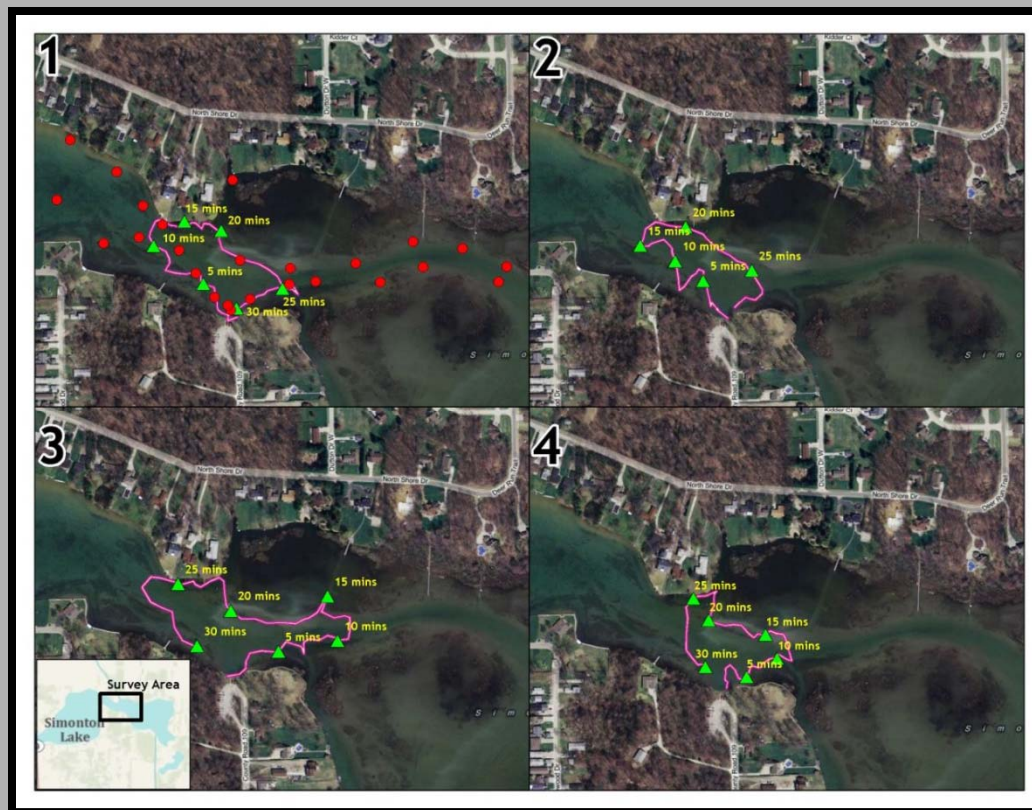
- 838 sites - principally boat landings
- 581 inland lakes surveyed
- 119 Ohio River public landings
- Invasive plants, mussels, and snails
- Indiana, Michigan, Illinois and Ohio

- Compared rake toss and snorkel
- Snorkel more accurate
- Snorkel detects rare species better



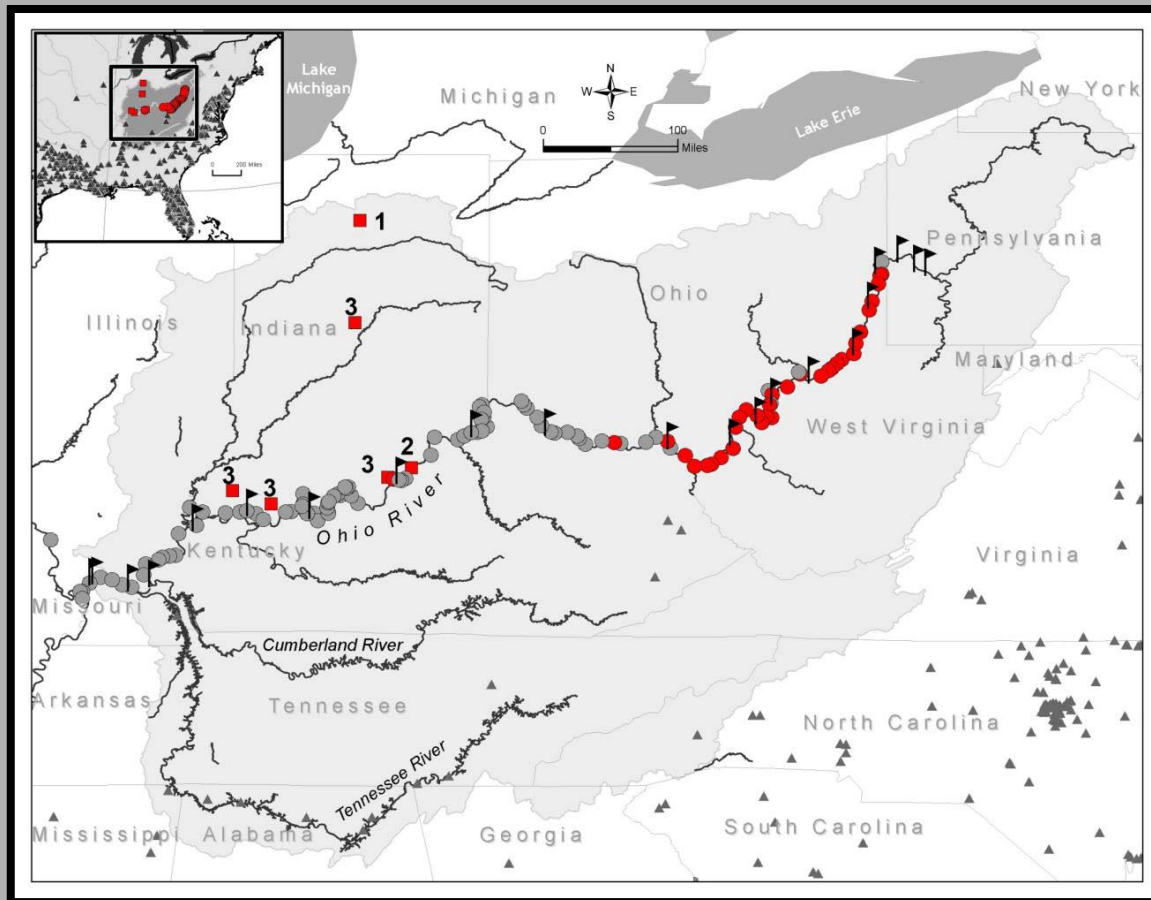
Results of Inland Lake Surveillance

- Recorded the presence of invasive and native plants
- Generated distributional data for 12 invasive plant
- Generated distributional data for 72 native plants
- No new populations of Hydrilla, Brazilian elodea, or parrots feather



Results of Ohio River Surveillance

- Hydrilla was found to be well established in the upper Ohio River
- Further downstream (IN and IL) - fragments found
- Establishment in the lower river is imminent



Response to Ohio River Hydrilla

BOATERS HELP...



**Prevent the Spread
of Invasive
Plants and Animals**

Invasives Hurt All Of Us

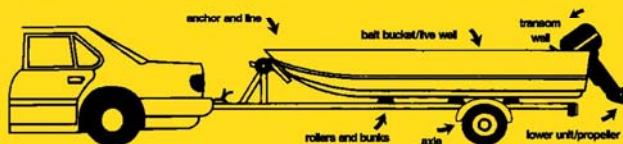
BEFORE leaving launching area:

- Remove aquatic plants and animals from boat and equipment.
- Drain river or lake water from boat.
- Dispose of unwanted bait in trash.

BEFORE launching in another area:

- Rinse your boat and equipment with hot (>104F) tap water; or
- Spray your boat and equipment with high pressure water; or
- Dry your boat and equipment for at least 5 days.

Where to look for invasive plants and animals:



For more information, contact
ODNR - Division of Wildlife

www.wildohio.com



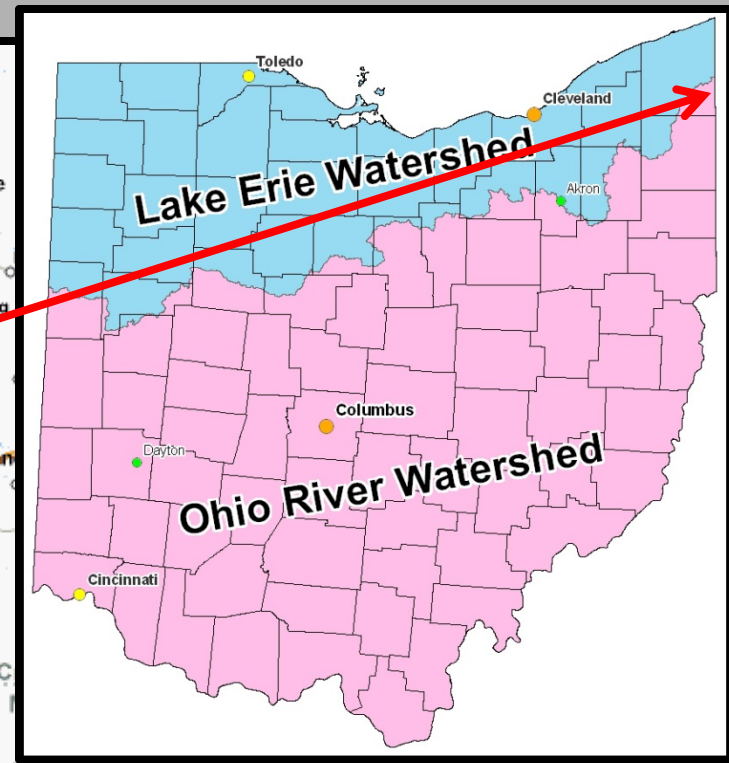
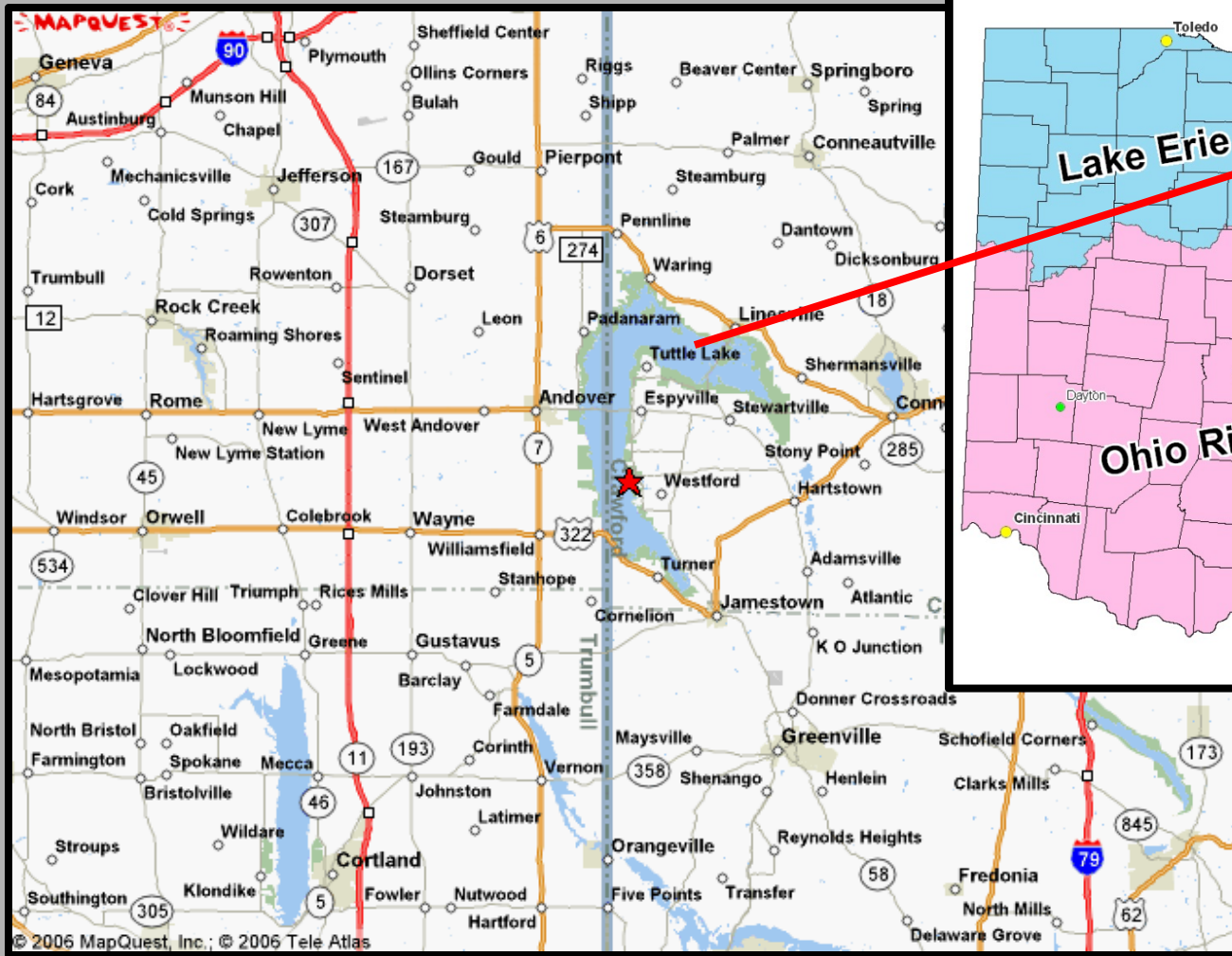
- Outreach
- Surveillance



Pymatuning Lake

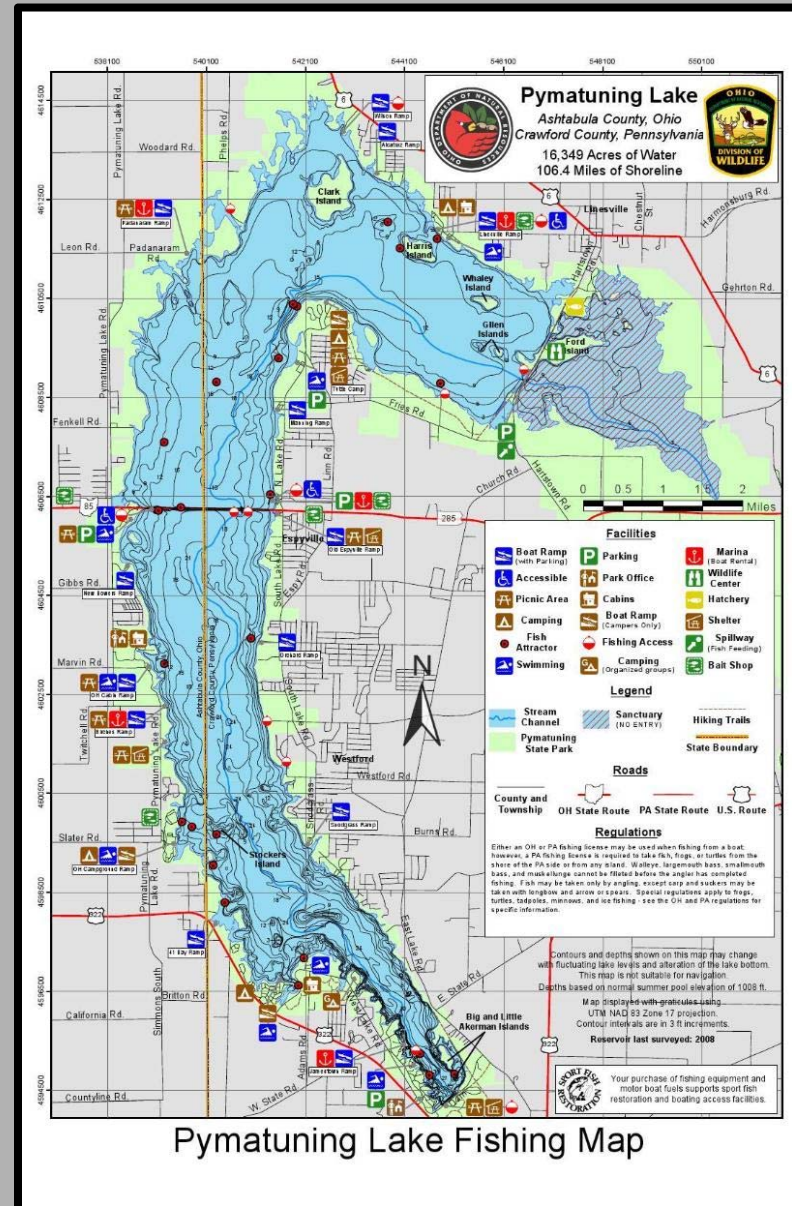


Pymatuning Lake (16,350 acres) Within five miles of Lake Erie Watershed



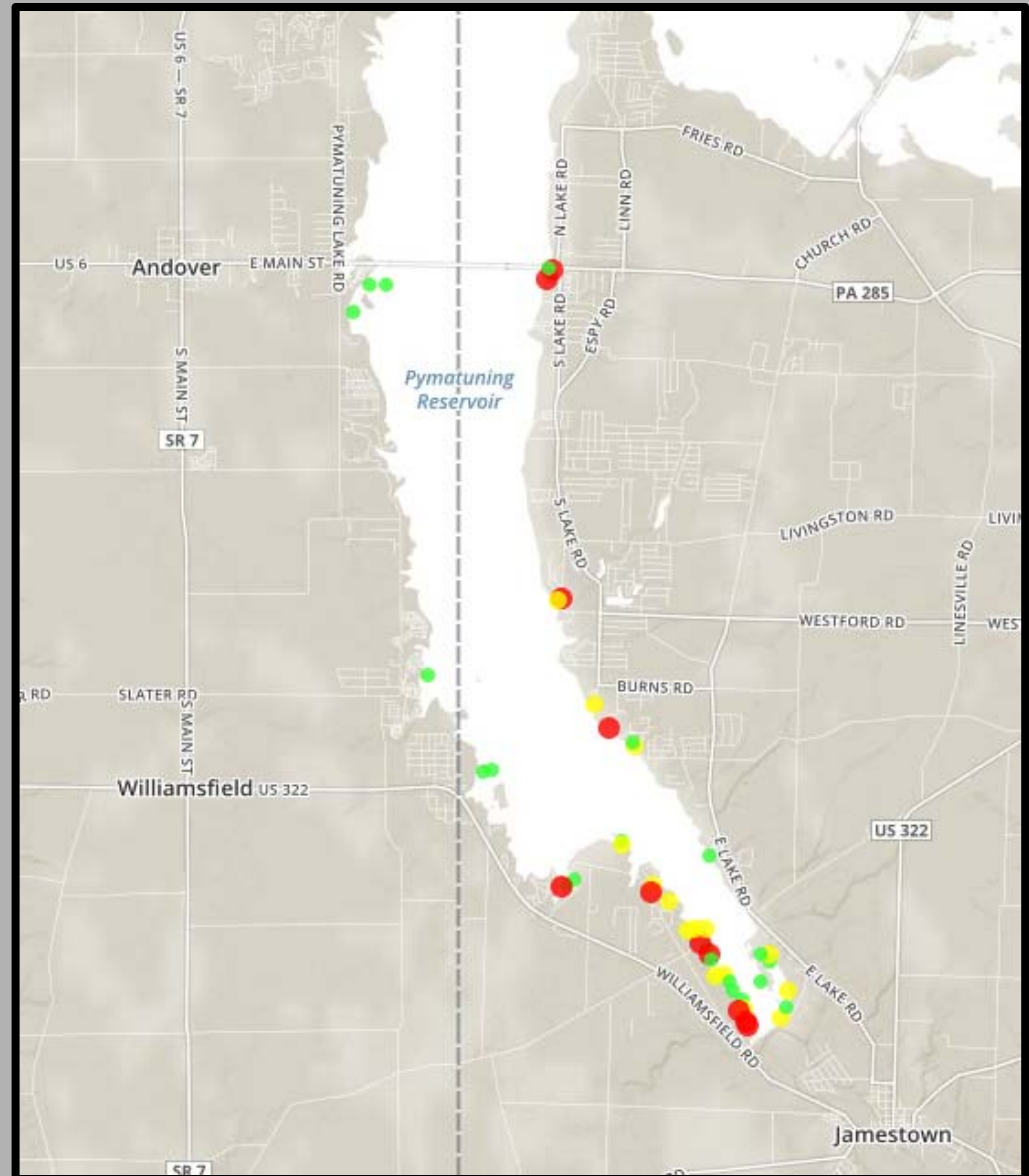
Popular Boating Spot on Lake Erie's Doorstep

- Large lake - 16,349 acres
- Interjurisdictional (OH and PA)
- Popular boating and fishing
- Within 5 miles of Lake Erie
- 16 boat ramps total
- 5 boat ramps on Ohio side



Hydrilla found at Several Locations

- 433 points surveyed
- 10% frequency occurrence
- Green = sparse
- Yellow = moderate
- Red = dense



Response to Pymatuning Lake Hydrilla

BOATERS HELP...



**Prevent the Spread
of Invasive
Plants and Animals**

Invasives Hurt All Of Us

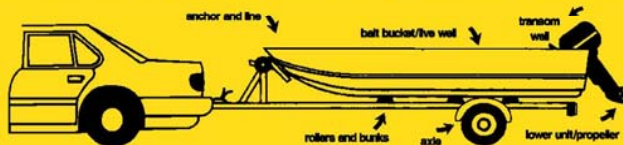
BEFORE leaving launching area:

- Remove aquatic plants and animals from boat and equipment.
- Drain river or lake water from boat.
- Dispose of unwanted bait in trash.

BEFORE launching in another area:

- Rinse your boat and equipment with hot (>104F) tap water; or
- Spray your boat and equipment with high pressure water; or
- Dry your boat and equipment for at least 5 days.

Where to look for invasive plants and animals:

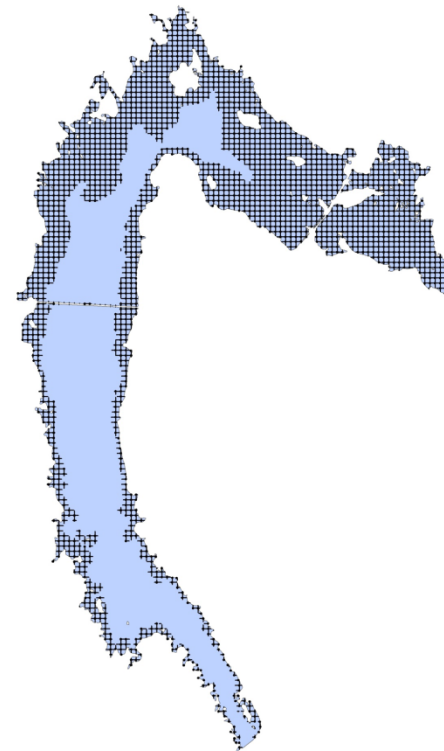


**For more information, contact
ODNR - Division of Wildlife**

www.wildohio.com



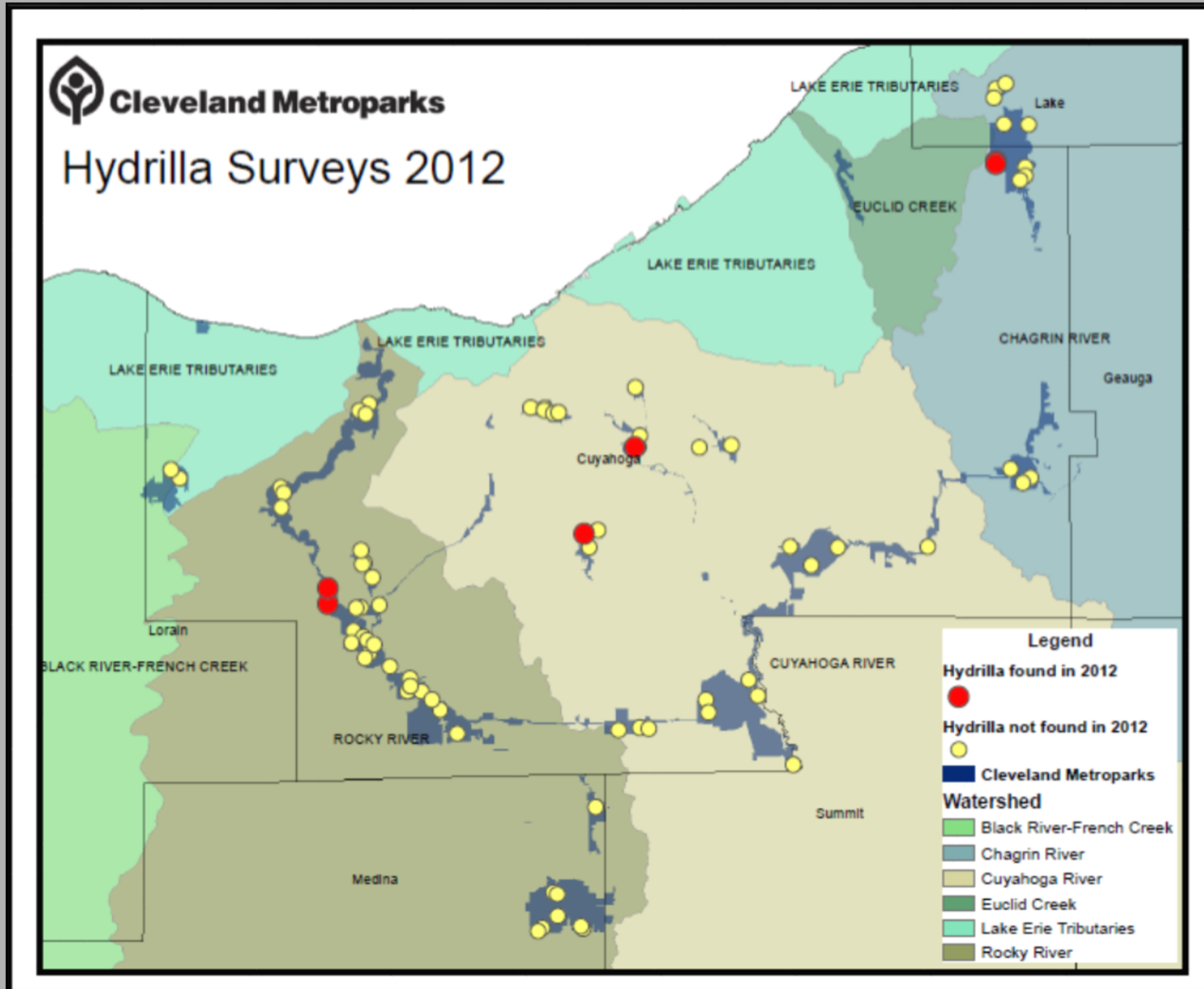
- Outreach
- Surveillance
- Spot Treatment



Cleveland Metroparks Lakes



Hydrilla found at Five Locations



Wallace Lake – Adjacent to Rocky River



Response to Cleveland Metro Parks Hydrilla

- Outreach
- Surveillance
- Eradication



Lake/Pond Use Restrictions

Use of this body of water is currently restricted due to ongoing Natural Resources management activities. Please observe the guidelines listed below.

Boating: This area is closed to all types of boating from 7/27 to ____.

Fishing: This area is closed to all fishing from 7/27 to 8/27.

Swimming: This area is closed to swimming from ____ to ____.

Cleveland Metroparks staff is conducting important management activities in this lake/pond.

Thank you for your cooperation. If you have any questions please call Cleveland Metroparks at 216-635-3200. Thank you.

Ohio's Response Based on Risk - Reward

1. Ohio River:

- Large open system
- Outside Lake Erie watershed
- Extensive infestation
- Outreach and surveillance



2. Pymatuning Lake:

- Large closed system
- Within 10 miles of Lake Erie watershed
- Early in infestation
- Outreach, surveillance, and spot treatments



3. Cleveland Metroparks:

- Small closed systems
- Inside the Lake Erie watershed
- Manageable situation
- Outreach, surveillance, and eradication



Questions

