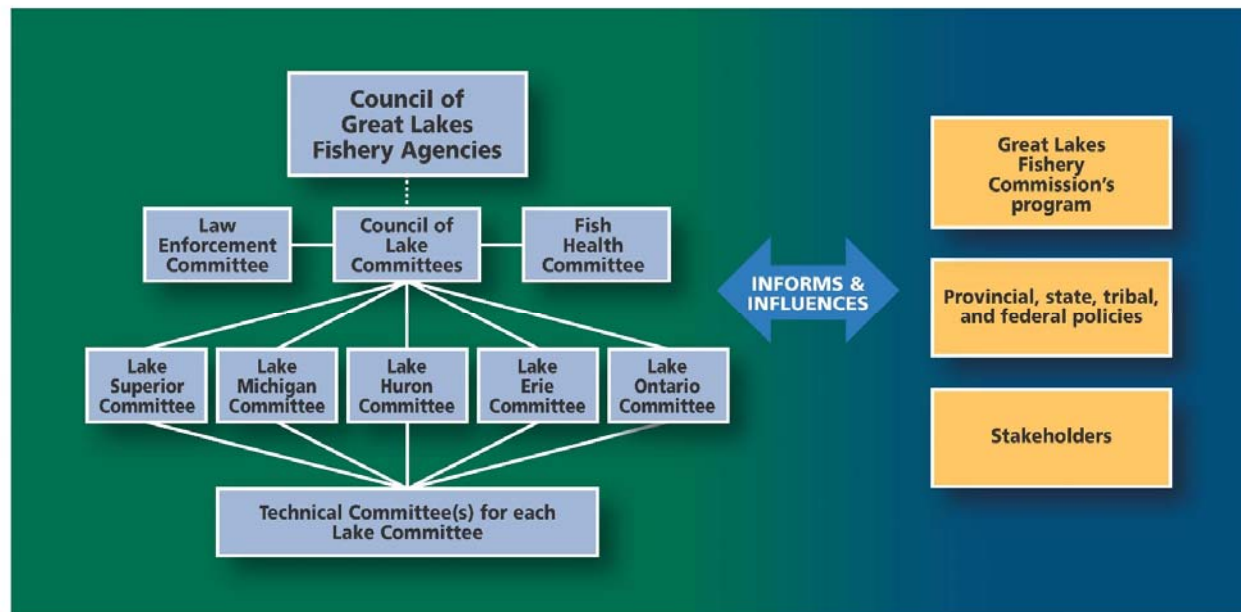


Council of Great Lakes Fishery Agencies

Invasive Fish Committee

A Joint Strategic Plan for Management of Great Lakes Fisheries



Signatories of the JSP

Lake Committee Membership by Lake

LAKE SUPERIOR COMMITTEE
 1854 Treaty Authority
 Chippewa-Ontario Resource Authority
 Great Lakes Indian Fish & Wildlife Commission
 Michigan Dept. of Natural Resources
 Minnesota Dept. of Natural Resources
 Ontario Ministry of Natural Resources
 Wisconsin Dept. of Natural Resources

LAKE MICHIGAN COMMITTEE
 Chippewa-Ontario Resource Authority
 Illinois Dept. of Natural Resources
 Indiana Dept. of Natural Resources
 Michigan Dept. of Natural Resources
 Wisconsin Dept. of Natural Resources

LAKE HURON COMMITTEE
 Chippewa-Ontario Resource Authority
 Michigan Dept. of Natural Resources
 Ontario Ministry of Natural Resources

LAKE ERIE/LAKE ST. CLAIR COMMITTEE
 Michigan Dept. of Natural Resources
 New York State Dept. of Environmental Conservation
 Ohio Dept. of Natural Resources
 Ontario Ministry of Natural Resources
 Pennsylvania Fish and Boat Commission

LAKE ONTARIO COMMITTEE
 New York State Dept. of Environmental Conservation
 Ontario Ministry of Natural Resources

FEDERAL AGENCIES SIGNATORY TO THE PLAN

Canada
 Fisheries & Oceans
 Pêches et Océans
 Canada

NOAA
 National Marine
 Fisheries Service

U.S. Fish & Wildlife Service

USGS
 U.S. Geological
 Survey Biological
 Resources Division

The Great Lakes Fishery Commission facilitates the Joint Strategic Plan process.

Invasive Fish Committee Terms of Reference

- Established to provide guidance to multiple jurisdictions on invasive fish issues
 - Result of Grass carp study in Lake Erie
- CGLFA manages fisheries of the Great Lakes under JSP umbrella
 - Not to replace other entities, ACRCC, GLP, Annex 6, CGLG Mutual Aid Agreement, etc.
- Membership – At least 3 CGLFA members and CLC Chair
 - CGLFA chair – Bill Mattes, GLIFWC; CLC Chair – Brian Locke, OMNRF; Rich Carter, OH DNR; Todd Turner, USFWS
 - Other non CGLFA members as necessary

Invasive Fish Committee Terms of Reference

- Charge from CGLFA
 - Coordination among JSP members and between members and others
 - Information, Communication, and Outreach to and from the CGLFA
 - Prioritization of programs, projects, and funding
- Schedule
 - Meet at least once per year
- Reports
 - Report back to CGLFA
- TOR will be reviewed every 3 years

Invasive Fish Committee Initial Focus

- Grass carp as a threat to Great Lakes fisheries
 - What rules and regulations does your agency have to manage grass carp?
 - Does your agency have a management plan that directs activities related to grass carp? If so, is it publically available?
 - Are there any grass carp management gaps, issues, or needs you have?
 - Are there management differences among different jurisdictions that you are concerned about? If so, what are they?
 - Are there any grass carp research needs you have?
 - What grass carp management projects are you currently involved in? If you are involved in a management project, who are the collaborators?
 - Do you have any grass carp outreach or education needs?

Invasive Fish Committee Initial Focus

- Bait fish importation, sale, and distribution as a threat to Great Lakes Fisheries
 - What rules and regulations does your agency have to regulate the importation, sale, and distribution of bait fish?
 - Are there any bait fish management gaps, issues, or needs you have?
 - Are there management differences among different jurisdictions that you are concerned about? If so, what are they?
 - Are there any bait fish research needs you have?
 - Are you involved in any bait fish management projects? If so, who are the collaborators?
 - Do you have any bait fish outreach or education needs?

Invasive Fish Committee Initial Focus

- Communication and coordination needs for agencies dealing with invasive fish issues
 - Are you currently coordinating and communicating with other state, federal, or tribal jurisdictions regarding invasive fish issues? If so, how and with whom are you coordinating with?
 - Do you believe there is a need for enhanced cross jurisdictional communication and coordination regarding invasive fish issues? If so, what are your specific needs or suggestions?

Invasive Fish Committee Initial Focus

- **General Questions**
- Which of the three focus areas currently represents the biggest challenge to your agency? Why?
- Which of the three focus areas does not warrant the committee's attention? Explain why you believe this.
- Is there a primary person or office responsible for overseeing all invasive fish issues within your agency? If so, who are the contact people?
- Do you see any of these focus areas as important emerging issues? (rather than ones you have already been working on for a long time?)
- Are there focus areas not on the list that you think the committee should be looking at?

Questions?