

Status of Red Swamp Crayfish *Procambarus clarkii*

To Conserve and improve Fish and Wildlife resources and their Habitats for sustainable use and appreciation by all

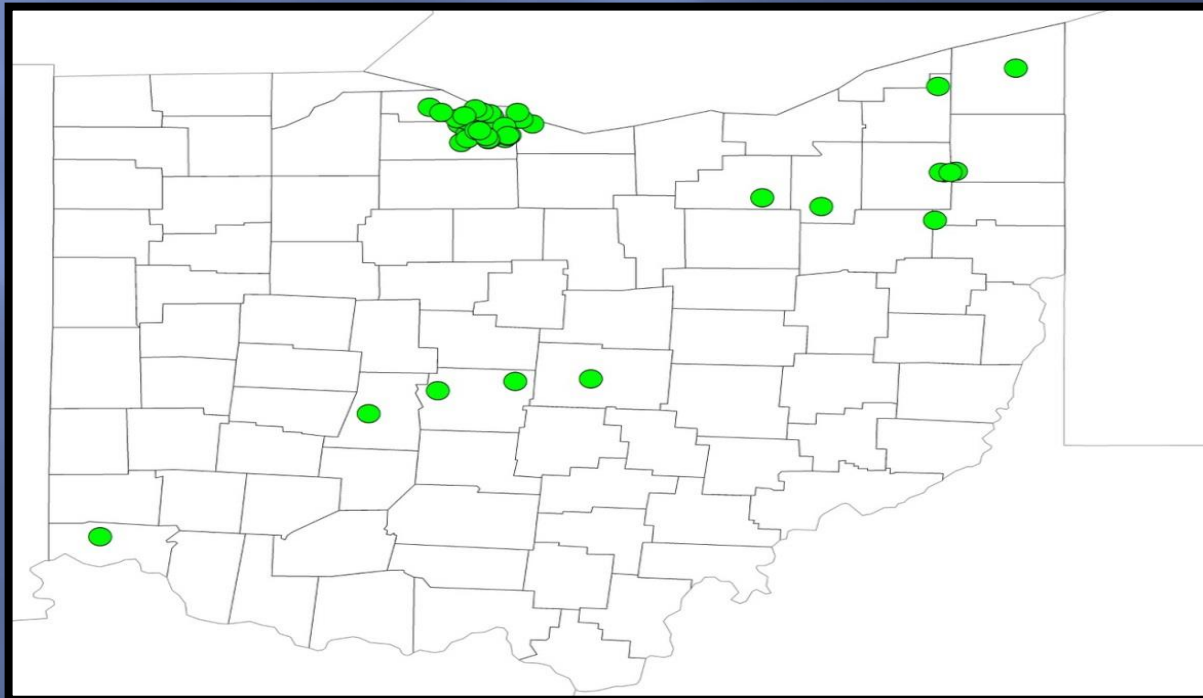


John Navarro
Aquatic Invasive Species Program Administrator



Current Status

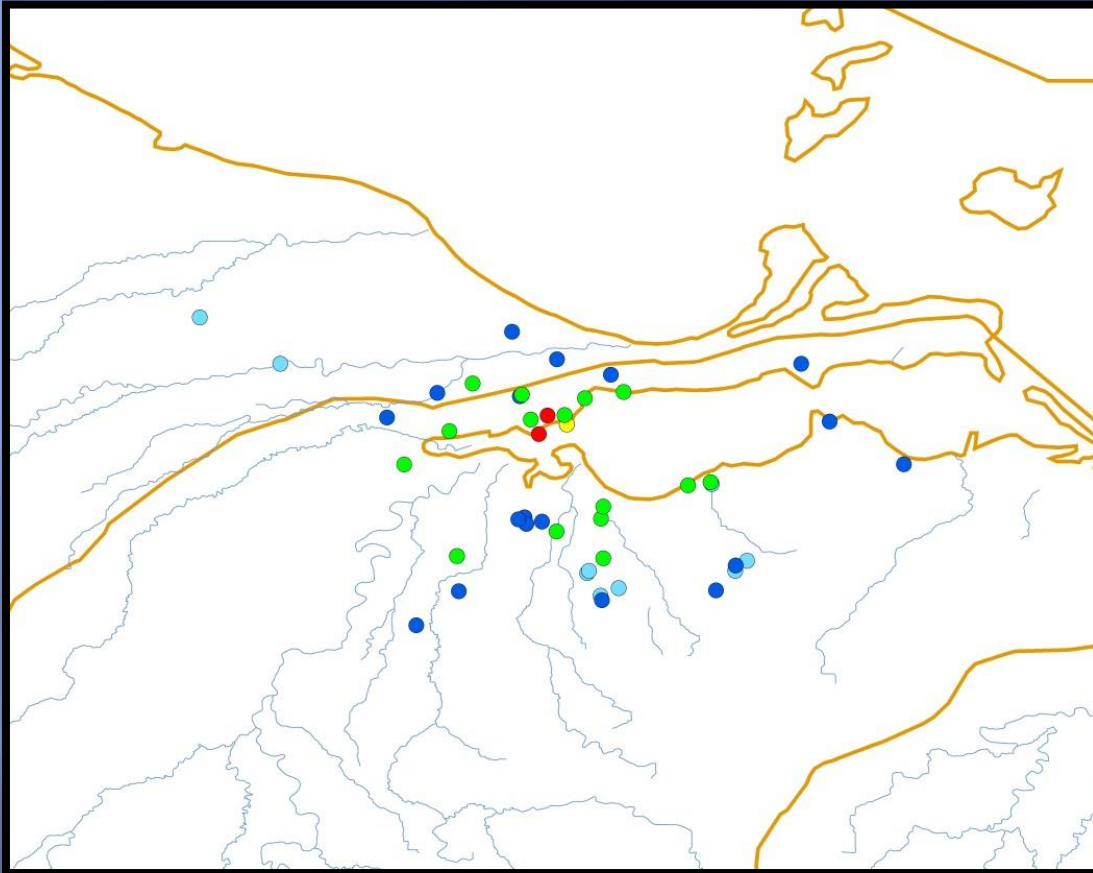
- Main invasion: Lake Erie – Sandusky Bay
- Winous Point Shooting Club - Epicenter
- Present for approximately 50 years
- Throughout SB and along coast (750 km²)



High Risk Pathway?



Ground Zero



Red - 1960s
Yellow - 1970s
Green - 1980s
Light Blue - 1990s
Dark Blue - 2000s

81 sites were sampled in 2017 - RSC at 14 sites

What We Know

- Widespread, established, and abundant
- Prefer soils with high organic content
- Low gradient ditches are a dispersal route
- Six other burrowing crayfish encountered
- Out competing other burrowing crayfish



What Can We Do?

- Too wide spread for effective action
- Trapping is not feasible
- Nuking will kill native crayfish
- Not likely to expand beyond organic soils





