



# **Great Lakes Green Infrastructure Champions Mini-Grant RFP**

**RFP OVERVIEW AND Q&A WEBINAR • APRIL 18, 2019**

---



Fred A. and Barbara M.  
Erb Family Foundation

# Webinar Preview

- Overview of GI Champions Program
- Mini-Grant Program and RFP
  - Program overview
  - Eligibility
  - Components of successful proposals
  - Example project activities
- Overview of Mentoring Network
- Project Timeline
- Q/A





# Great Lakes Green Infrastructure Champions--Overview

- Purpose: catalyze adoption of green infrastructure (GI) practices and policies by providing small to mid-sized municipalities with resources they frequently lack
  - **Funding:** mini-grants
  - Capacity building: mentoring network, workshops
  - Address barriers: policy analysis – completed September 2018



Dequindre Cut, Detroit, MI

# Great Lakes Emerging Champions Mini-Grants Program--Overview

- Purpose: to increase green infrastructure (GI) implementation capacity in small to mid-sized communities in the Great Lakes Basin by supporting selected communities with grants up to \$15,000 USD.
- Grants support community projects that focus on **developing strategies to overcome key institutional barriers** to implementing GI in communities
- Recipients participate in the [Champions Peer-to-Peer Mentoring Network](#)
- RFP online at <https://www.glc.org/work/champions/mini-grants>

# Eligibility

- Applicants:
  - U.S. or Canadian communities with **fewer than 250,000 people**
  - Municipal government agencies, regional authorities or registered non-profit organizations serving eligible communities
  - Must show how you plan on working with the eligible communities you serve
  - Demonstrate a commitment to overcoming barriers and willingness to participate in the Champion Mentoring Network
- Geography: must be located within the binational Great Lakes basin (United States and Canada)





# Eligible Projects

Eligible projects **must fit into** one or more of the following focus areas:

1. Local code/ordinance review and revision
2. GI operations and maintenance training, procedures, and workforce development
3. Sustainable funding streams
4. Other projects that address barriers to GI implementation

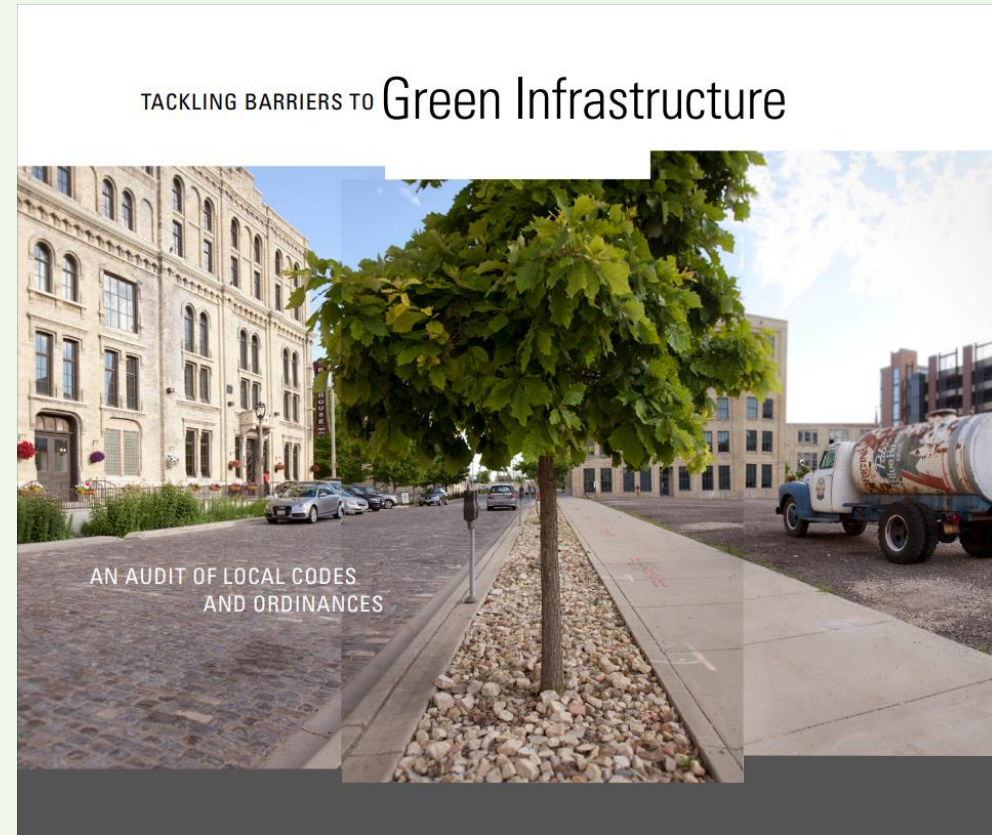
# Not Eligible

- Project where the primary component is direct GI installation (e.g. rain gardens, vegetated roofs, rainwater harvesting systems etc.)
  - Projects with a complementary installation component will still be considered
- Projects that are required as part of permit obligations or legal judgement
  - MS4 communities are still eligible if the project does not cover regulated actions
- State and provincial government agencies
- Projects outside binational Great Lakes basin
- Communities with population over 250,000



# Local code/ordinance review & revision – example project activities

- Performing an audit to identify and revise local codes/ordinances to allow for or support GI implementation
- Developing or reviewing local design standards
- Developing plans for engaging decisionmakers to change restrictive codes



# O&M training/procedures – example project activities

- Hosting workshops, webinars, and trainings for municipal staff
- Developing GI O&M manual or toolkit
- Creating a volunteer maintenance program



# Sustainable funding streams – example project activities

- Performing a feasibility study for establishing a stormwater utility
- Designing offset programs including stormwater credit trading programs
- Facilitating public/private partnerships for GI funding

## Calculate Non-Residential Fee Example:

Building and parking lot impervious area	6,168 sq. ft.
1 billing unit	2,062 sq. ft.
Total billing units	$6,168 / 2,062 = 3$
Multiply by rate for 1 billing unit	$3 \times \$140$
Total fee	\$420/yr



Impervious Area = 6,168 sq. ft.

# Other projects – example project activities

- Performing a GI feasibility study
- Developing stormwater BMP decision toolkits that include GI
- Targeted education and outreach toward developers, decisionmakers, and municipal staff
- Other innovative project ideas – creativity is encouraged!



# Looking For Projects That....

Are proposed by **Emerging Champions** who are eager to remove barriers and build capacity to expand GI implementation in their community/sphere of influence and will be mentees in the Champions Network

# Looking For Projects That....

- Respond directly to identifiable barriers to GI implementation in the community
- Have broad stakeholder support
- Will benefit from being part of the Green Infrastructure Peer-to-Peer Mentoring Network
- Will have lasting impact after grant funding ends
  - Example: Proposal includes a timeline for phased implementation of a larger green infrastructure planning effort made possible by removal of barriers
- Bonus points for financial match
- **Evaluation criteria are appended to the RFP**

# More about the Mentoring Program

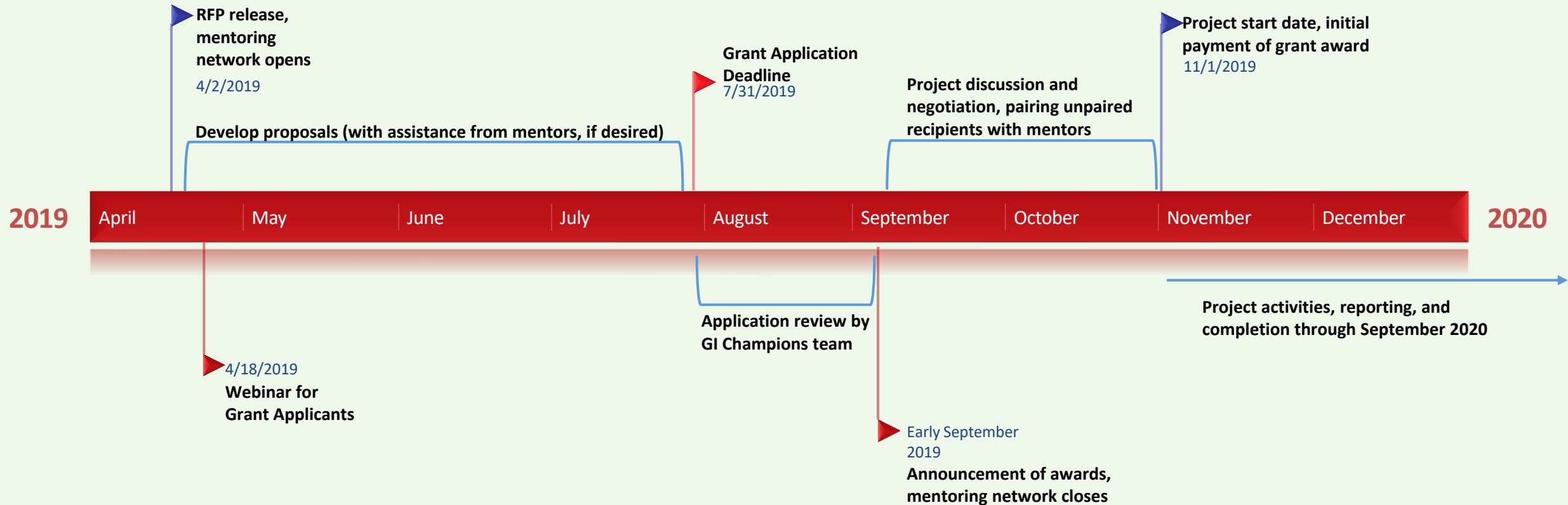
- Connects experienced GI practitioners (*Pioneer Champions*) with individuals that would like to bring GI to their communities (*Emerging Champions*)
- Fosters the transfer of knowledge from Pioneer Champions to the broader network of Emerging Champions who are eager to remove barriers and build capacity for GI but lack experience
- 1<sup>st</sup> phase of the network had 16 pairs of mentors/mentees

# More about the Mentoring Program

- Grant recipients must agree to participate as a mentee
- Communities that do not receive a grant are still encouraged to participate
- **Apply to the network early - mentors can serve as a resource for crafting a successful proposal!**
- How It Works
  1. Emerging Champions (mentees) complete an [Emerging Champion Needs](#) Form
  2. GLC pairs Emerging Champion with one or more Pioneer Champions (mentors) based on needs
  3. Mentors and Mentees sign a [Mentoring Agreement](#) that:
    - describes the type of mentoring services that will be provided
    - Runs through August 2020



# Mini-Grant Timeline



# Questions?

Please type your questions into the “chat” box. A summary of questions and responses will be available following the webinar.

<https://www.glc.org/work/champions/mini-grants>

Contact: [gichampions@glc.org](mailto:gichampions@glc.org)