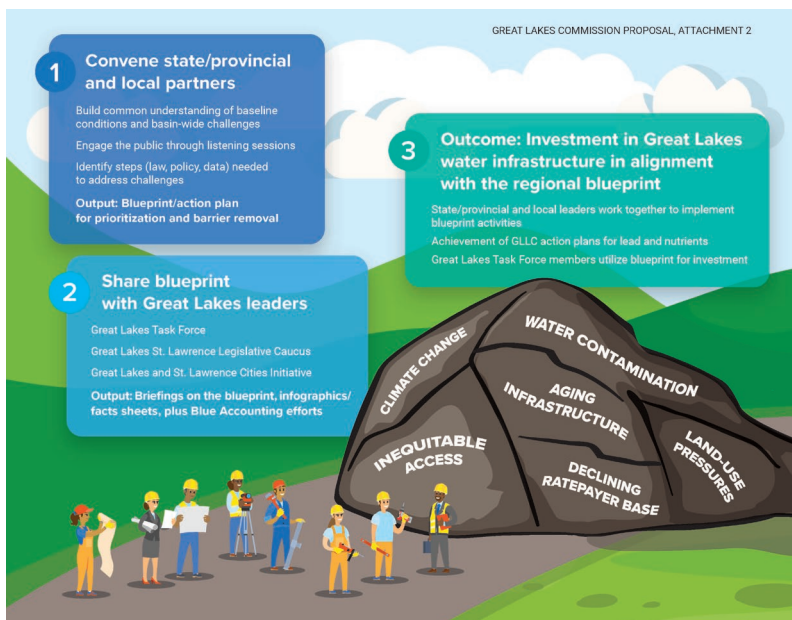


## Approaches for Improving Great Lakes Water Infrastructure



The Great Lakes Commission is working with diverse partners and stakeholders to identify approaches for improving water infrastructure in the Great Lakes region. The Regional Working Group on Water Infrastructure is building a common understanding of priority areas to be addressed, identifying opportunities to take action, and seeking feedback from the Great Lakes community on additional approaches and stories of successful efforts.

Questions considered by the Regional Working Group include: Who must participate to reflect needs and information representative of the Great Lakes basin's residents? What are the shared challenges, and what steps can help address them? How do we assure that approaches are equitable and further strengthen the region's resiliency to a changing climate?

By developing a common understanding of water infrastructure problems and outlining improved approaches to set the stage for progress, the Regional Working Group on Water Infrastructure continues to focus on these questions as it works toward a collaboratively-created document for consideration by the Great Lakes Commission, propelling actions to address the region's water infrastructure needs.

This project is funded by The Joyce Foundation.