

GLANSIS Update

Great Lakes Panel on ANS

November 1, 2022

Staff and Partnership Updates



Ashley Baldrige Elgin

Research Ecologist

NOAA-GLERL



Rochelle Sturtevant

GLANSIS Program Manager and
AIS Outreach

Michigan Sea Grant

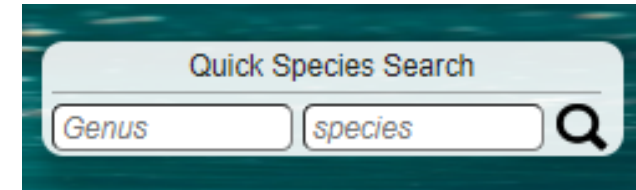


El Lower

Communications Specialist

Michigan Sea Grant

Changes to Species Lists



External Reviewers NEEDED!

Recent Updates:

- *Pseudorasbora parva*
- *Osmerus eperlanus*
- *Cyprinella analostana*
- *Anguilla rostrata*
- *Salmo trutta*

Aquatic Plants in Review:

- ***Salix atrocinerea* – established**
- *Hydrocotyle ranunculoides* – cryptogenic
- *Egeria najas* – Watchlist
- *Filipendula ulmaria* - Watchlist

Reptiles/Amphibians In final review:

- ***Trachemys scripta elegans* - Established**
- *Lithobates catesbeianus* – Range Expander
- *Xenopus laevis* – Watchlist
- *Kinosternon subrubrum* – Watchlist
- *Macrochelys temminckii* – Watchlist
- *Pseudemys concinna* – Watchlist
- *Trachemys scripta scripta* - Watchlist

In Review (Other new species?):

***Anguillicoloides crassus* – nematode parasite of eels – Established?**

Eriocheir sinensis

Cambarus bartonii

Orconectes virilis

Carassius gibelio

Fundulus diaphanous

Mendia beryllina

Morone saxatilis x *chrysops*

Rhodeus sericeus

Impact

Great Lakes Impacts:

Summary of species impacts derived from literature review. Click on an icon to find out more...



Morone americana has a high environmental impact in the Great Lakes.

Results per page: 25 ▾

Impact ID	Scientific Name	Impact Type	Study Type	Study Location	Impact Description	Geographic Location	Reference
5081	<i>Morone americana</i>	Disease/Parasite/Toxicity	Observational	Field	In the Chesapeake Bay, white perch is host to the novel coccidian parasite <i>Goussia bayae</i>	Chesapeake Bay, Virginia	37508

Currently showing impact type "**Disease/Parasite/Toxicity**".

[View all impact types for *Morone americana*](#)



Regulations Maps

Full species name:

Ctenopharyngodon idella

Map

Table

Common name:

None specific

Group:

None specific

Family:

None specific

Genus:

None specific

Species:

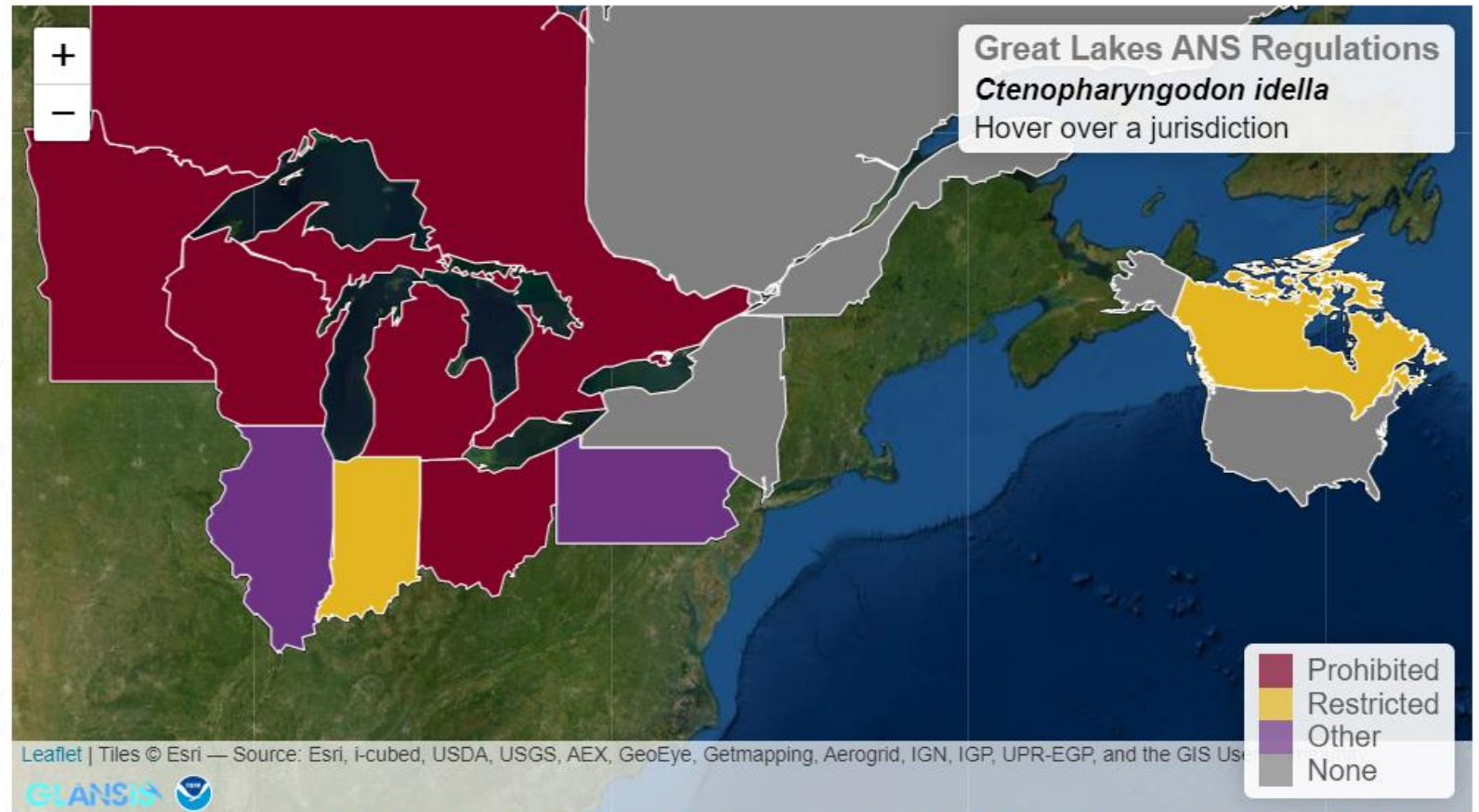
None specific

Method:

None specific

Search

Reset fields



Educator Hub



GREAT LAKES
AQUATIC NONINDIGENOUS SPECIES
INFORMATION SYSTEM



[Species List Generator](#)

[Map Explorer](#)

[Risk Assessments](#)

[Educator Hub](#)

[FAQ](#)

[Additional Resources](#)



Educator Hub



Story Maps



Use these interactive, multi-media ArcGIS Story Maps to learn more about Great Lakes invasive species, and for tutorials on how to use GLANSIS itself!

Printables



Find posters, infographics, food web diagrams, maps, and fact sheets to print and share here

AIS Video Content



Watch an animated video series on Great Lakes invaders here

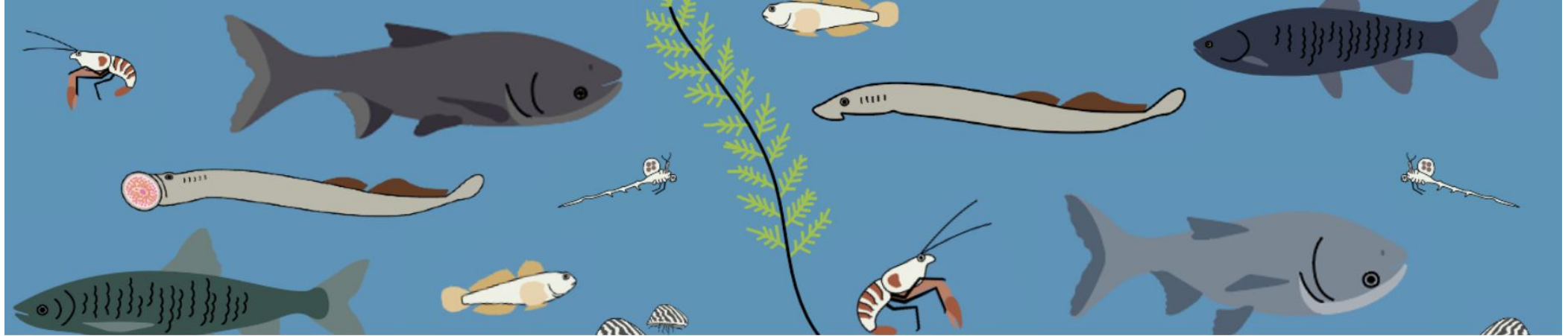
Education Affiliate Links



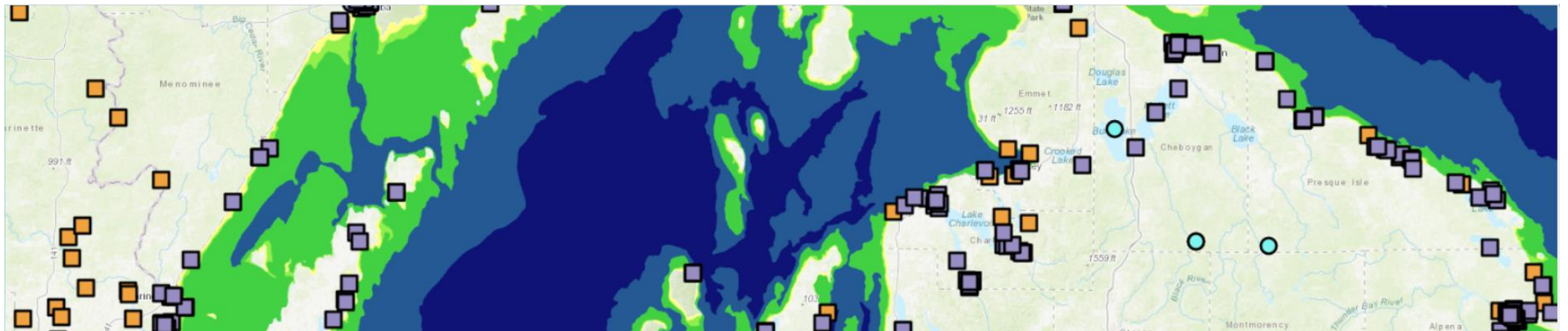
Additional invasive species resources provided by our partners throughout the region



Story Maps

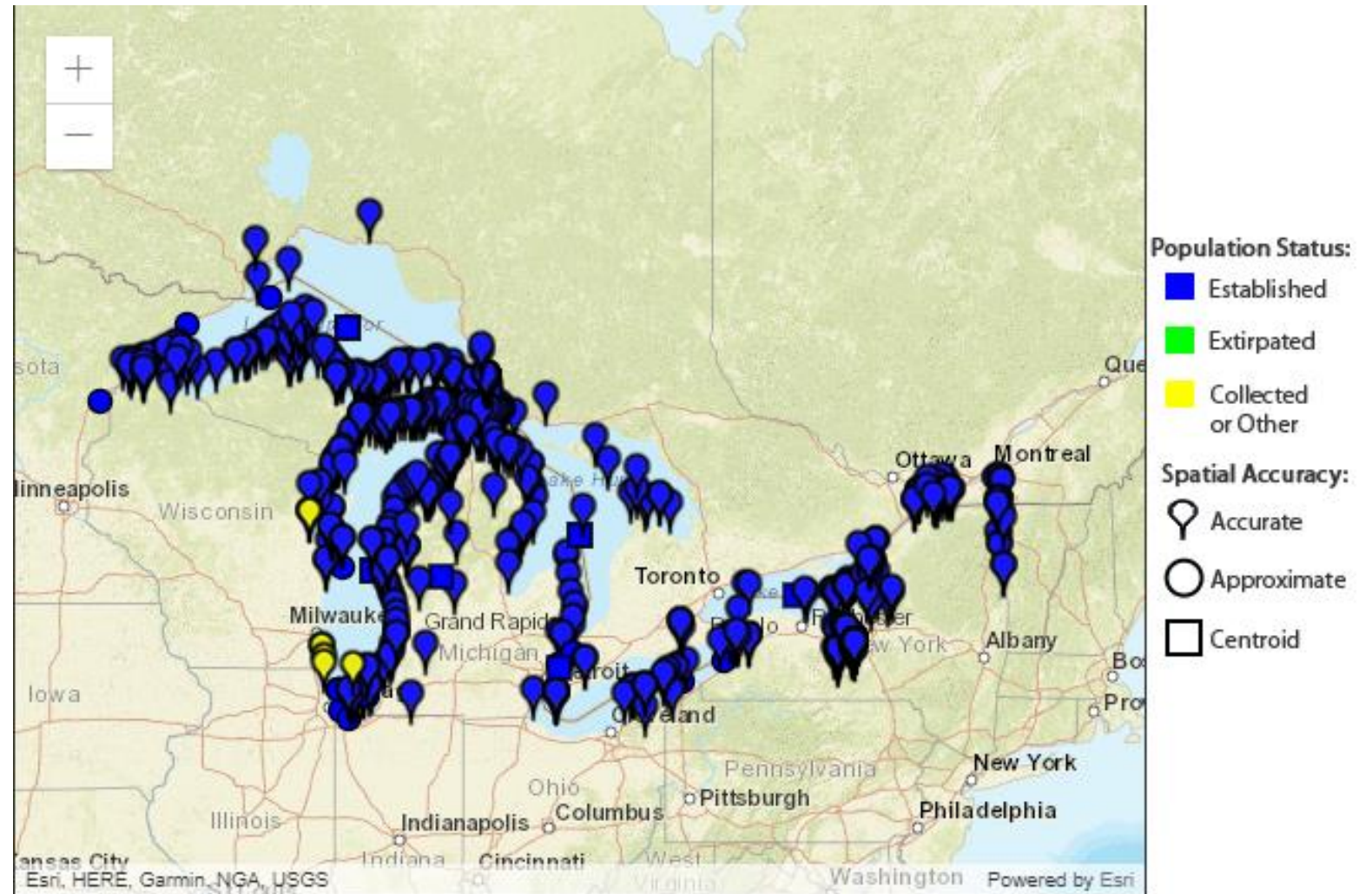


- Managing Great Lakes Invaders (Video Series with additional links)
- Using the GLANSIS Map Explorer (Walk-through instructions)



Reminder - Canadian data

- We now have capacity to bulk-upload Canadian data into the database AND serve that data.
Please send ALL distribution data for established species - current and historic - from the Canadian Great Lakes watershed.



This map only depicts Great Lakes introductions.
[Click here for Great Lakes region collection information](#)

[Click here for the national map](#)