

Closing Ohio's Direct Water Pathways

To Conserve and improve Fish and Wildlife resources and their Habitats for sustainable use and appreciation by all



John Navarro
Aquatic Invasive Species Program Administrator

Pathway - Canals and Waterways



Rankings

#1: Chicago Area Waterway (Illinois)

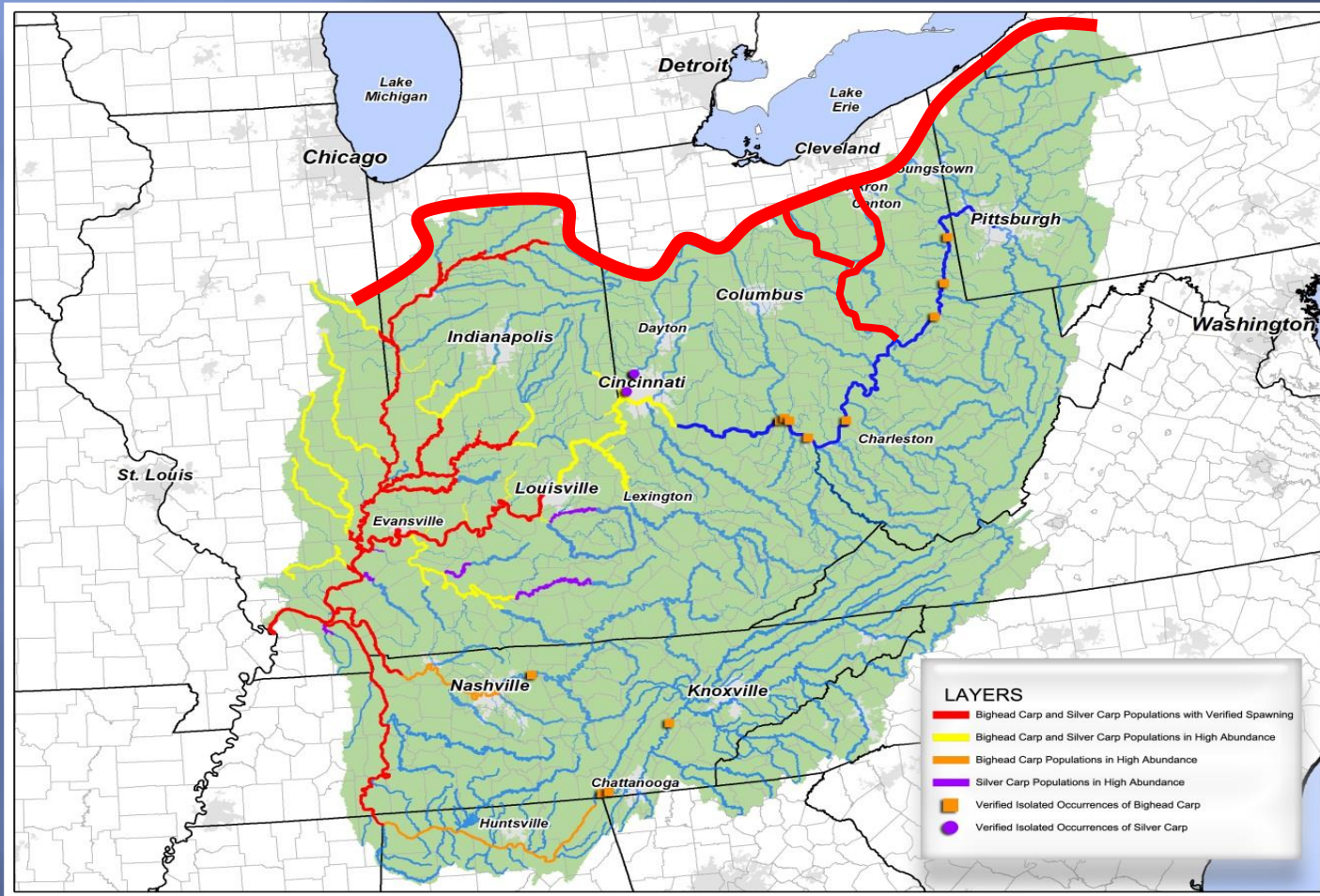
#2: Eagle Marsh (Indiana)

#3: Ohio Erie Canal (Ohio)

#3: Little Killbuck Creek (Ohio)



Our Line in the Sand





Ohio Erie Canal

**Ohio – Erie Canal
Lake Erie Watershed**

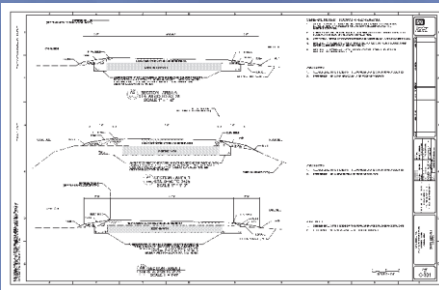
**Tuscarawas River
Ohio River Watershed**



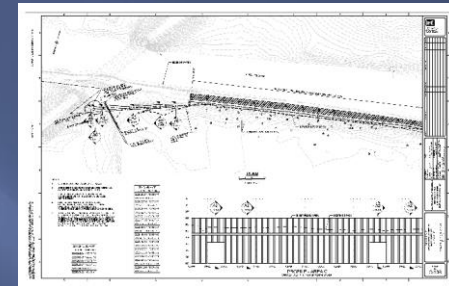
Low Spots Along the Tow Path



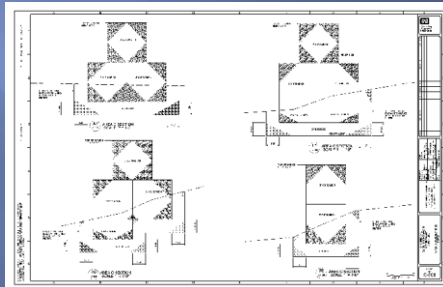
Topdressing



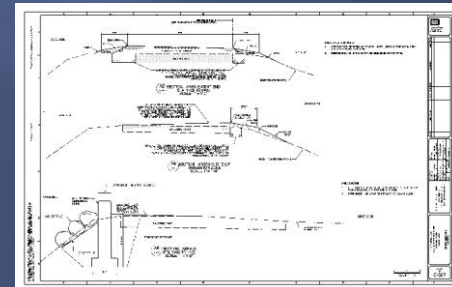
Sheetpile



Gabions



Curb



Gabions



Sheetpile



Curbing



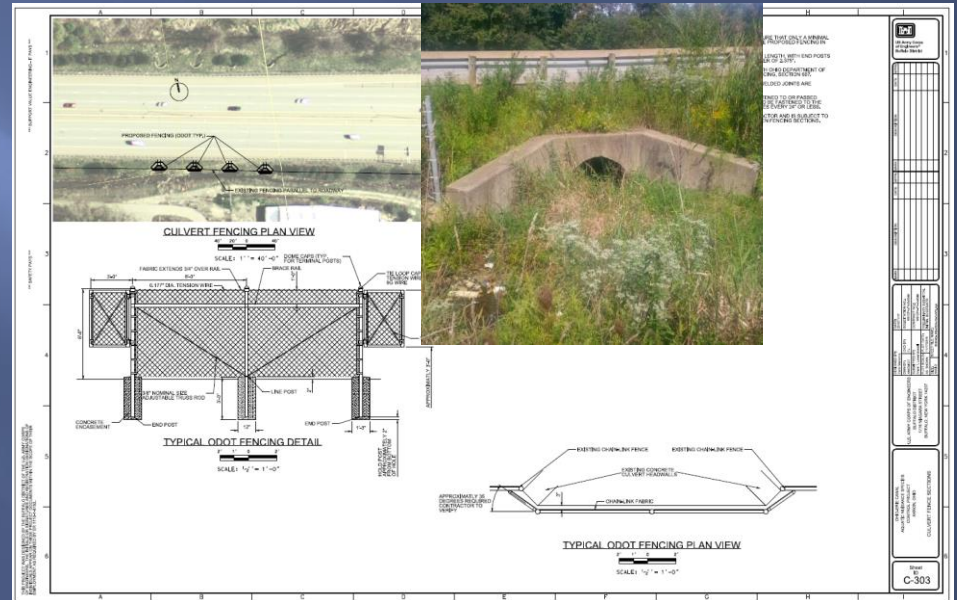
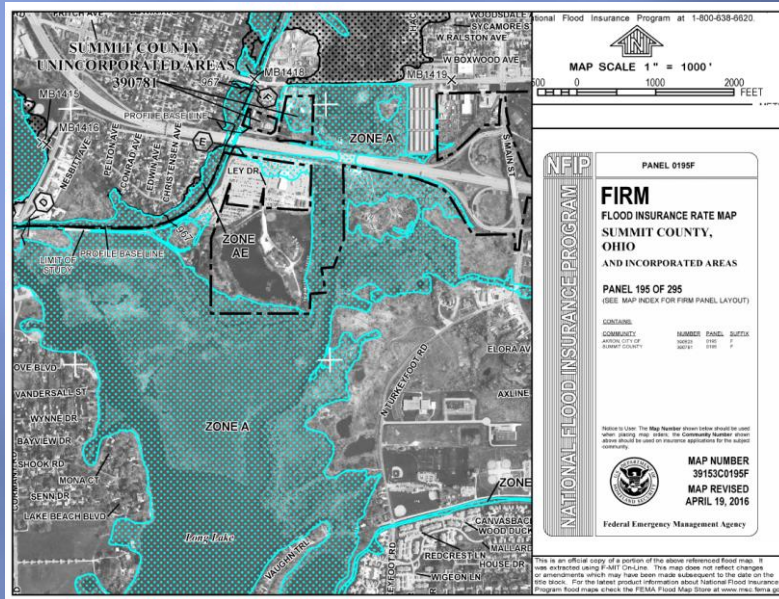
Canal Outlet at Wolf Creek



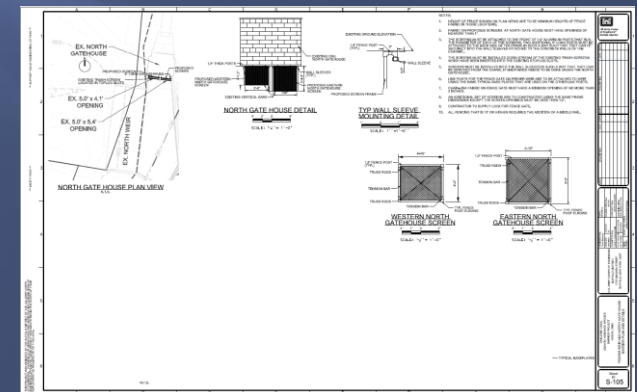
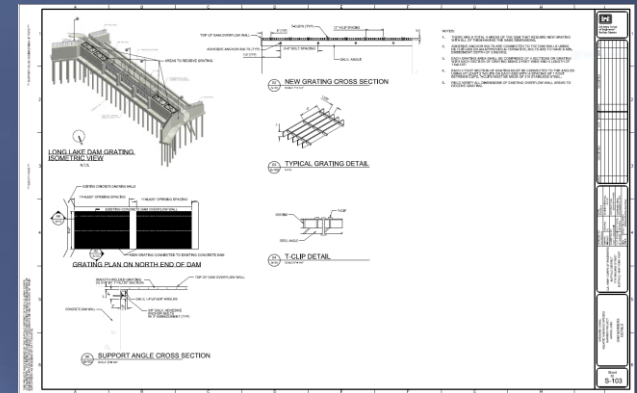
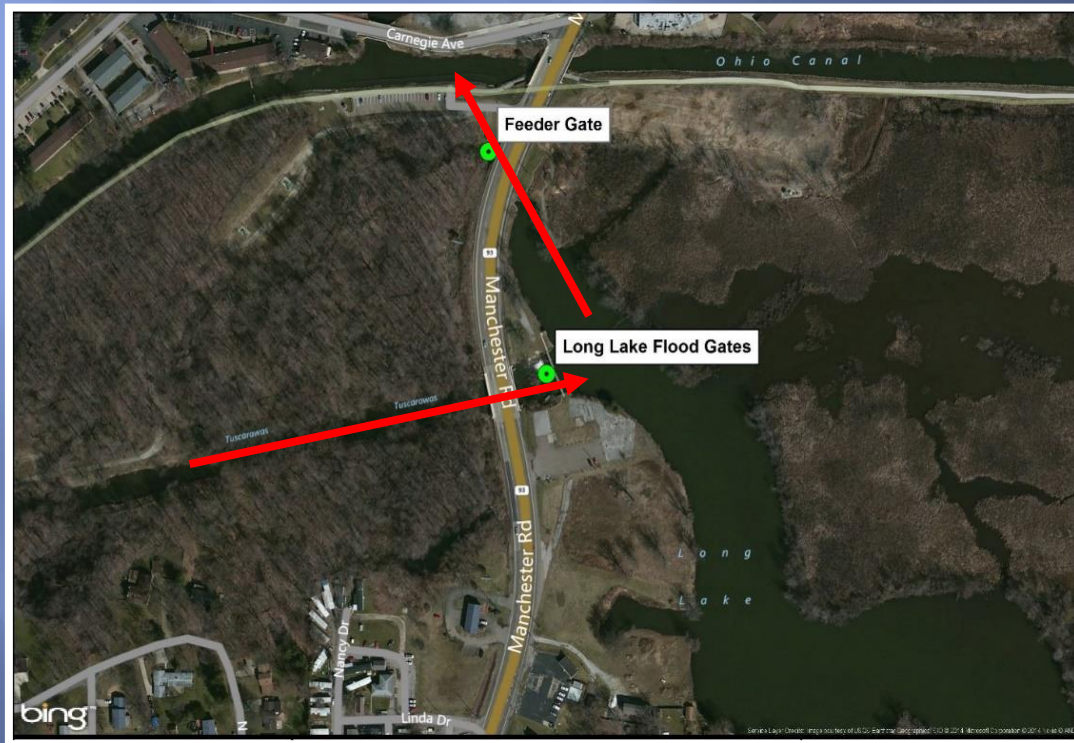
Lateral Overflow Weir



Culverts at I-277



Long Lake Measures



Long Lake Flood Gates



Canal Feeder Gate



Where Do We Go Now?

Cost

- USACE – 2.4 Million
- Ohio DNR - \$115,000

Funding Thru FY2018

- USACE - Phase I Construction
- Ohio DNR – SHPO and O&M

Future Funding FY2019

- USACE – O&M manual
- Ongoing O&M

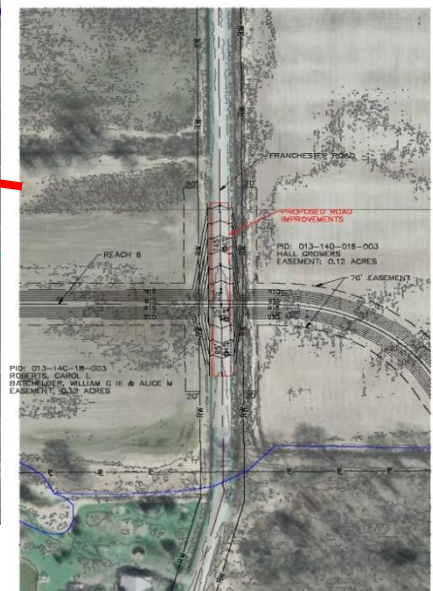
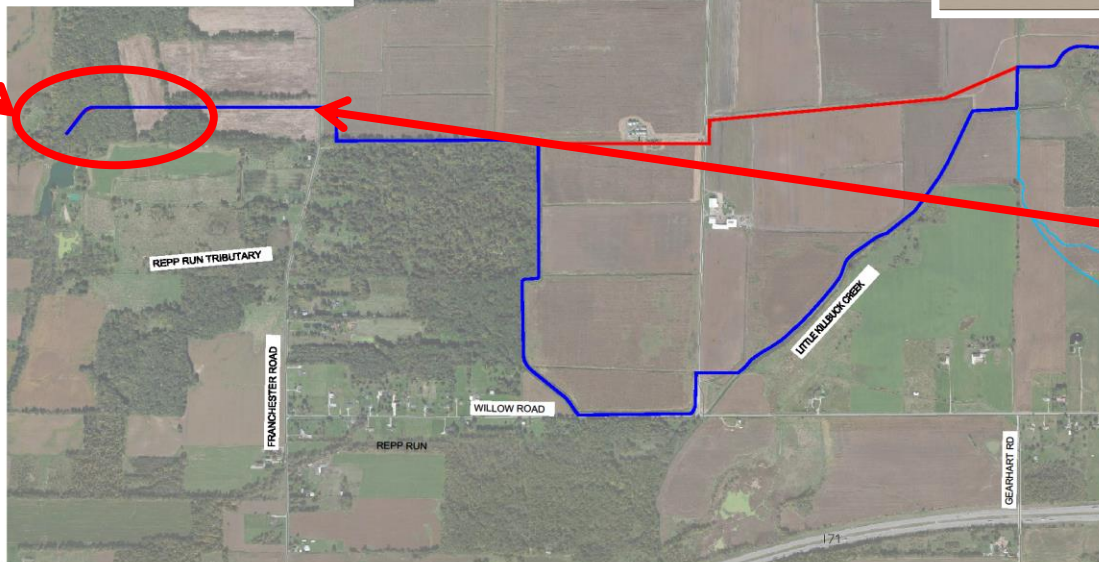
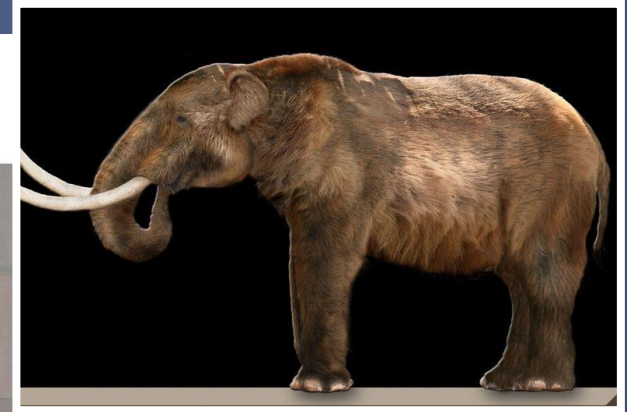
Little Killbuck Creek



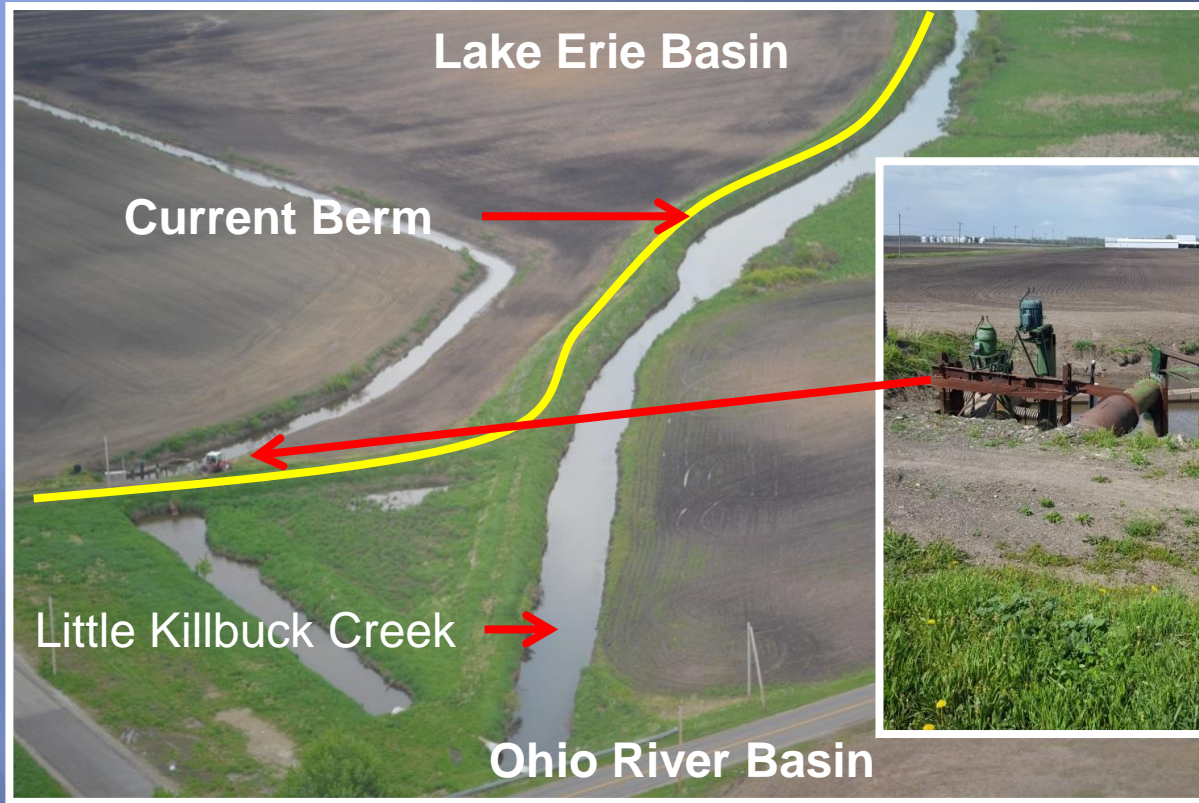
14,500-lineal feet (2.75 Miles)

19,800-lineal feet (3.75 Miles)

Dike Alignment Wetlands/Roadway/Cultural



Flooding/Drainage/Irrigation



Where Do We Go Now?

Cost

- \$4.4 Million - Original estimate
- \$12.16 Million - Option A
- \$16.04 Million - Option B

Funding Thru FY2018

- 25 Percent design – Study and Report
- Study and Report to USACE
- Determine alignment
- Property negotiations/acquisitions

Future Funding FY2019

- Final Design
- Acquire Borrow/Flood Mitigation Sites
- Construction in Stages