



GLANSIS Update

Rochelle Sturtevant, MISG

For the Great Lakes Panel on ANS
– November 17, 2020

GLANSIS is:

- A Great Lakes-specific **node** of the USGS Nonindigenous Aquatic Species (NAS) database
- A NOAA-led interagency **project** to enhance access to ANS information for the Great Lakes

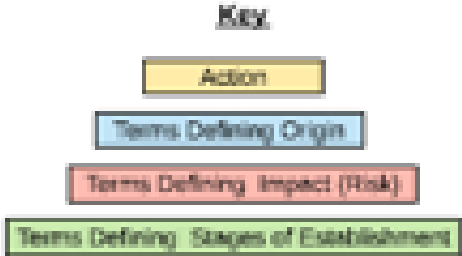
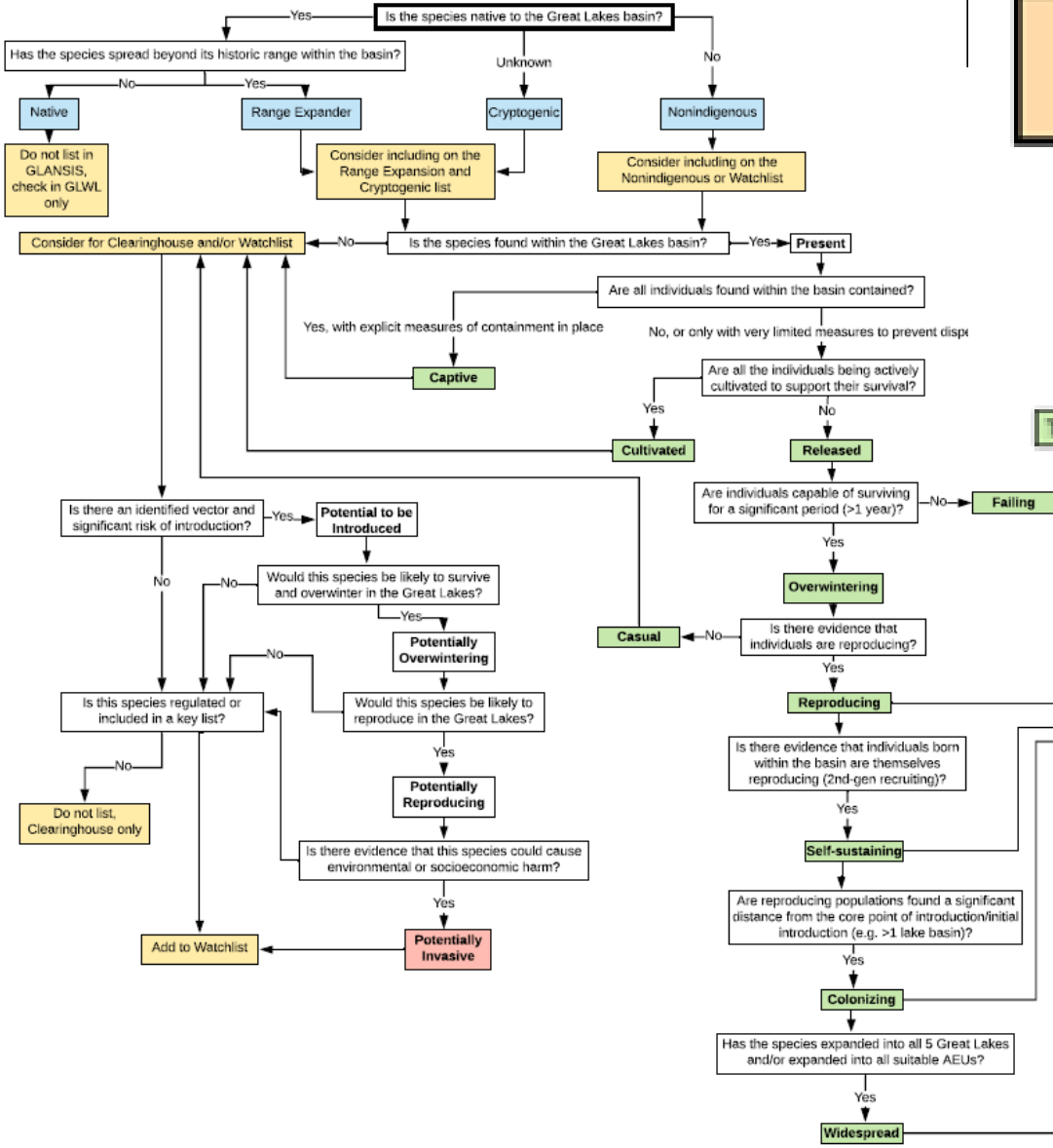
GLANSIS provides:

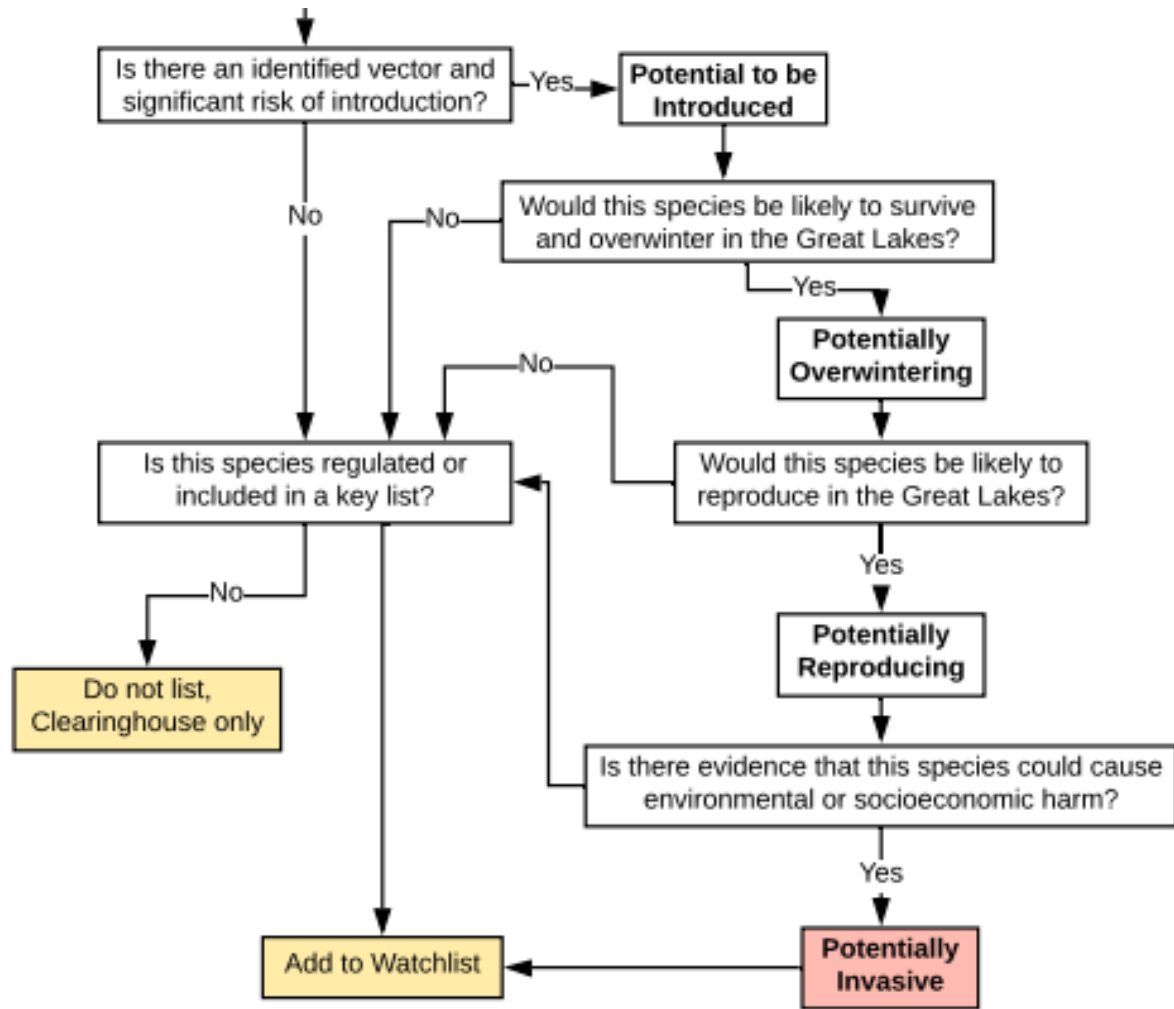
- Simple interface to access GLs specific content
- Advanced search capacity

GLANSIS contains:

- Comprehensive technical profiles on non-native species
- Detailed collection records of 1000s of reports of non-native species
- A Clearinghouse for Risk Assessments Relevant to the GL

GLANSIS Controlled Vocabulary for the Establishment Process





New Publications

Additional Resources



GLANSIS Resources



- Sharing Feedback, Sharing Screens: Videoconferencing as a Tool for Stakeholder-Driven Web Design
- [NOAA GLERL TM -161c – Impact Assessments](#)
- [NOAA GLERL TM-169c – Risk Assessments](#)
- Report on the FY2018 Pilot Projects
- [State of the Great Lakes 2019 Highlights Report](#)
- The Great Lakes' Most Unwanted: Characterizing the Impacts and Traits of the Top Great Lakes Invasive Species. Aquatic Invasions [submitted]
- [Competitive Impacts of Nonindigenous Aquatic Plants in the Laurentian Great Lakes. Plants \[in progress\]](#)
- NOAA TM-xx Gap Analysis [in progress]



New Features (for 2020+)

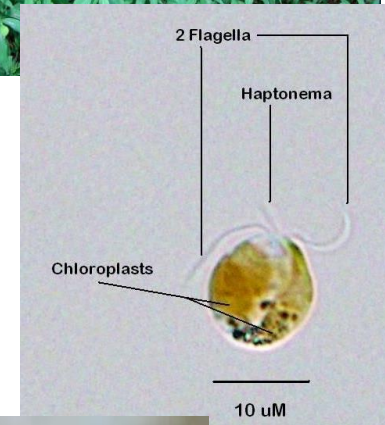
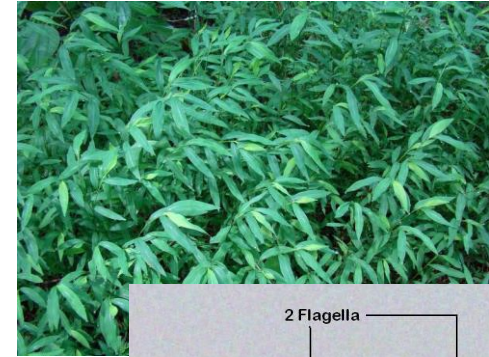
- Prioritized List of Species for Control
- Education Needs Assessment
- Clearinghouse Expansion – suggestions for additions? (promised two new methods)
- Impact Database
- GIS Expansion
- Canadian data – We should be able to start pulling in Canadian data by January!
- Lake Champlain – will hear about funding in April
- eDNA - > USGS anticipating a publication in November on the test data. Mockups of maps to follow.





New Watchlist Species Added!

- *Microstegium vimineum* – Japanese stiltgrass, established inland in IN, MI, OH, PA
- *Prymnesium parvum* – golden algae, bloom forming and toxin producing in the southern US
- *Lithoglyphus naticoides* – gravel snail, moderate probability of introduction via ballast water from the Ponto-Caspian





New Range Expansion Species Added!

- *Elimia livescens* – native to the St. Lawrence and Lake Champlain, cryptogenic/invasive farther west, but now found all the way to Lake Superior
- *Lymnaea palustris*





Profiles Updated

Established

- *Osmerus mordax*
- *Actinocyclus normanii fo. subsalsa*
- *Alosa pseudoharengus*
- *Echinogammarus ischnus*
- *Scardinius erythrophthalmus*
- *Petromyzon marinus*
- *Ictiobus cyprinellus*

Range Expansion & Cryptogenic

- *Labidesthes sicculus*
- *Aplodinotus grunniens*
- *Phenacobius mirabilis*

Watchlist

- *Monodacna colorata*

Contribute



Please consider sharing your data, direct us to additional resources or contribute to our peer review

Review

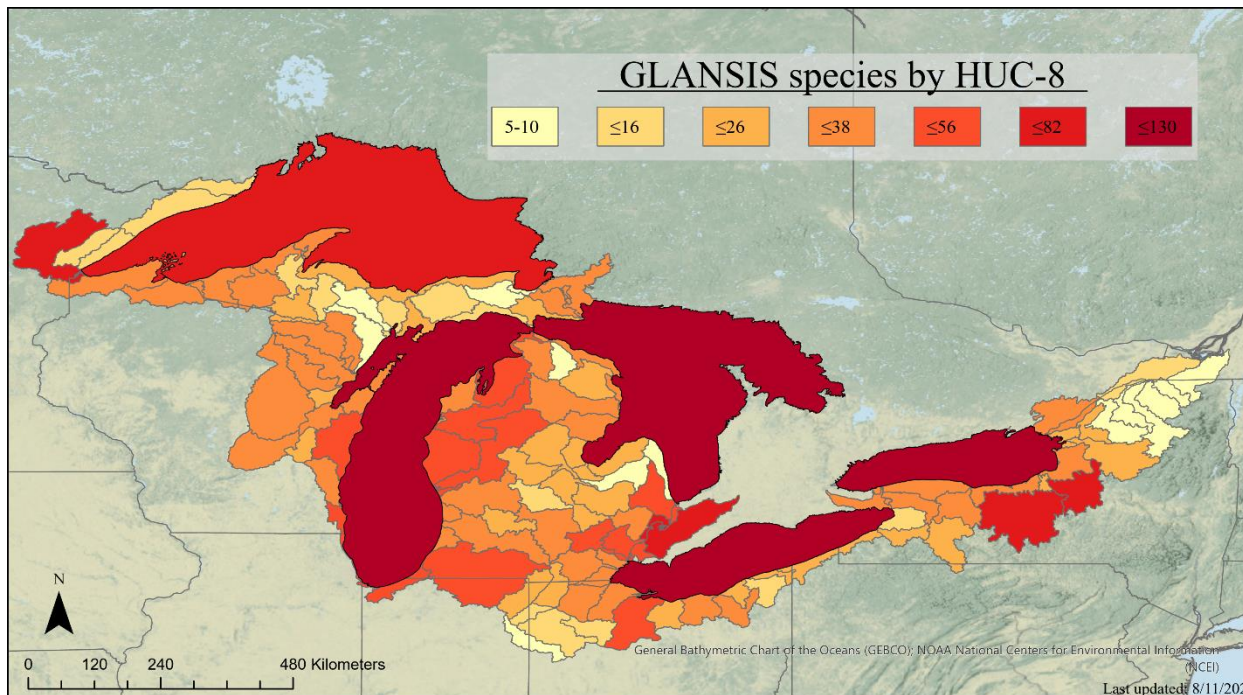


Have expertise in any aspect of invasive species biology or management? Please contribute to our peer review

oar.glerl.glansis@noaa.gov



Questions?



<https://www.glerl.noaa.gov/glansis/>

oar.glerl.glansis@noaa.gov

