

Used Watercraft as a Pathway For AIS

THOMAS WOOLF
AIS BUREAU CHIEF



Montana's AIS Program

- Mandatory inspection before launch entering the state.
- Roadside inspection.
- All taxa prevention, monitoring, outreach and management.
- Funded by:
 - Angling fee.
 - Hydroelectric fee.
 - Out of state boat fee.



AIS Program 2019

- 112,000 inspections
- 40 inspection stations.
- State and contracted stations:
 - Tribes, counties and Conservation Districts
- Other partner stations
 - Glacier NP, City of Whitefish
- Standard data collection
- Early detection monitoring.
 - Tiber Res: Dreissenid positive.
 - Limited AIS distribution.
- Outreach and education.
 - Partner delivered.



Montana Watercraft Inspection

FWP Watercraft Inspection and Decontamination Stations



2019 Season



Sources: Esri, HERE, Garmin, USGS, Intermap, INCREMENT P, NRCan, Esri Japan, METI, Esri China (Hong Kong), Esri Korea, Esri (Thailand), NGCC, (c) OpenStreetMap contributors, and the GIS User Community

- Decontamination Station
- Class I Inspection Station*
- Class II Inspection Station**
- Partner Agency Station
- Statewide Defense Perimeter
- Containment Zones
- Columbia River Basin Defense Perimeter
- Fishing District



BoatInspectionStations_FY2019_Public.pdf
7/15/2019 Created by Geographic Data Services
W:\Projects\S24_AIS\boatInspectionStations_FY2019_Public.mxd

* Class I - full inspection and decontamination capability
** Class II - risk assessment screening, inspection and routing as needed



Watercraft Movement Into Montana 2018 All Inspection Stations

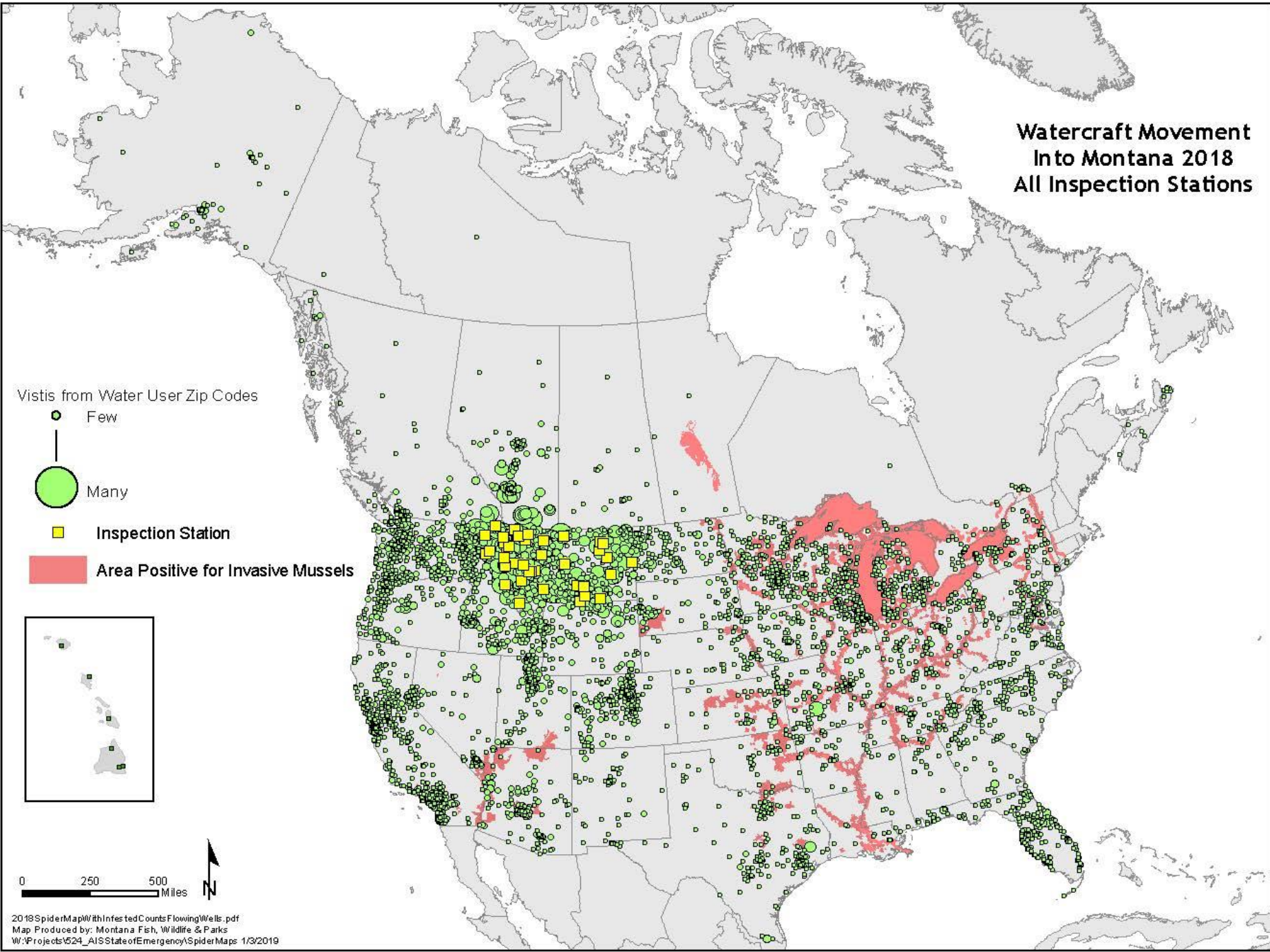
Vists from Water User Zip Codes

● Few

● Many

■ Inspection Station

■ Area Positive for Invasive Mussels



Watercraft Movement Into Montana 2018 Wibaux Inspection Station

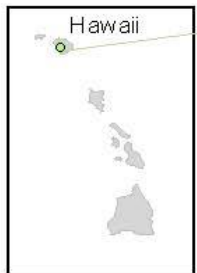
Vists from Water User Zip Codes

● Few

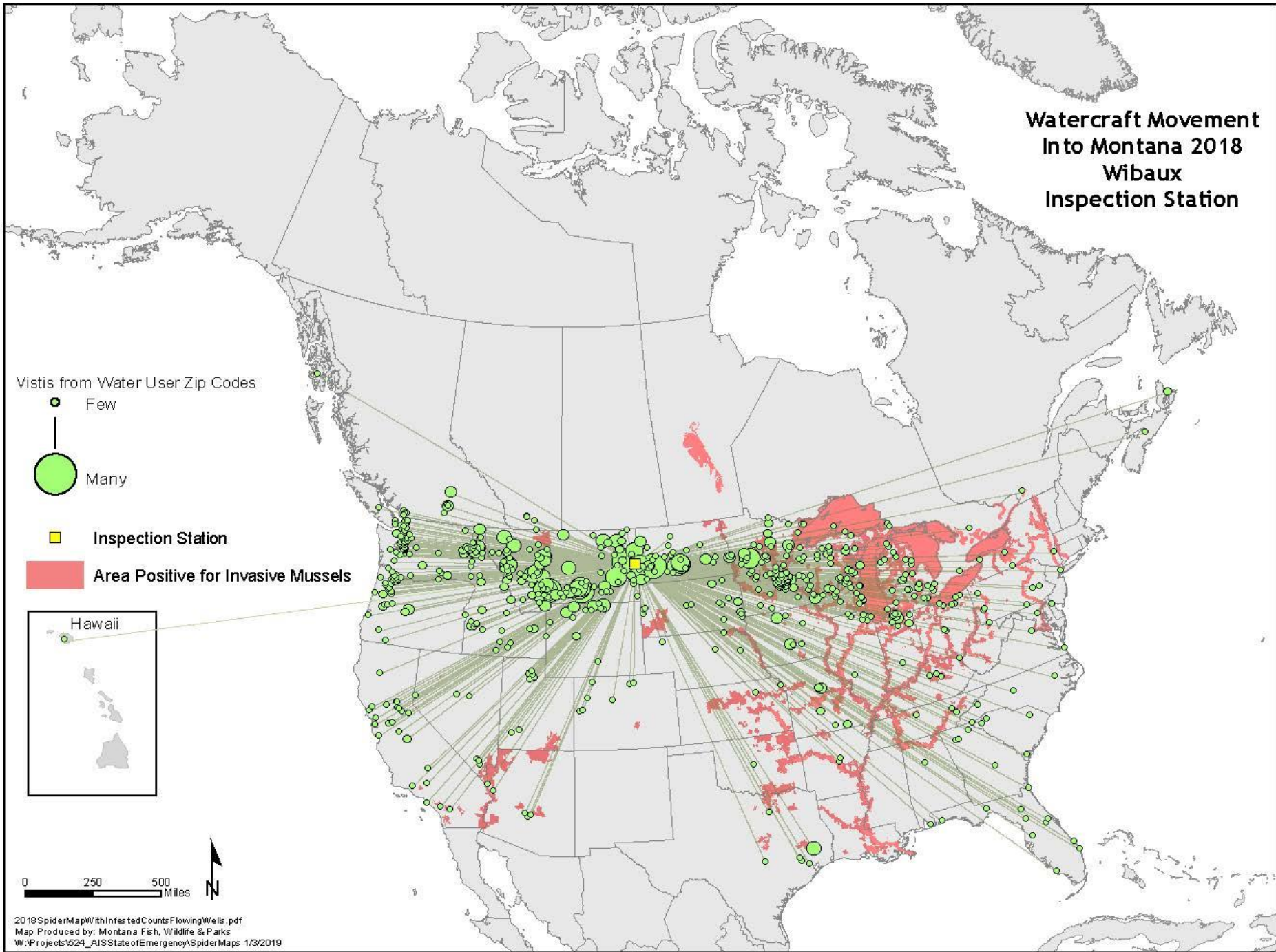
● Many

■ Inspection Station

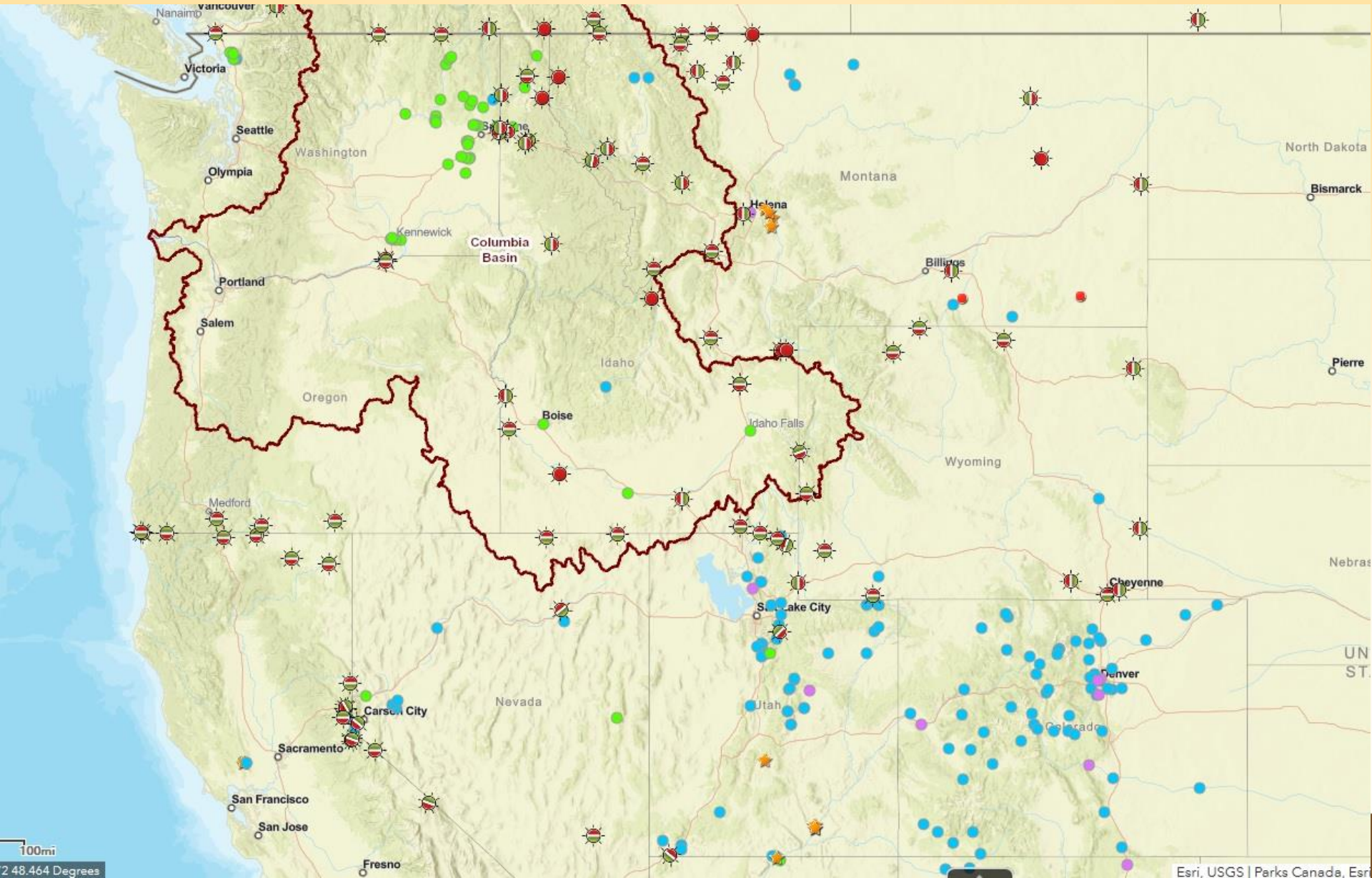
■ Area Positive for Invasive Mussels



0 250 500 Miles



Western Watercraft Inspection

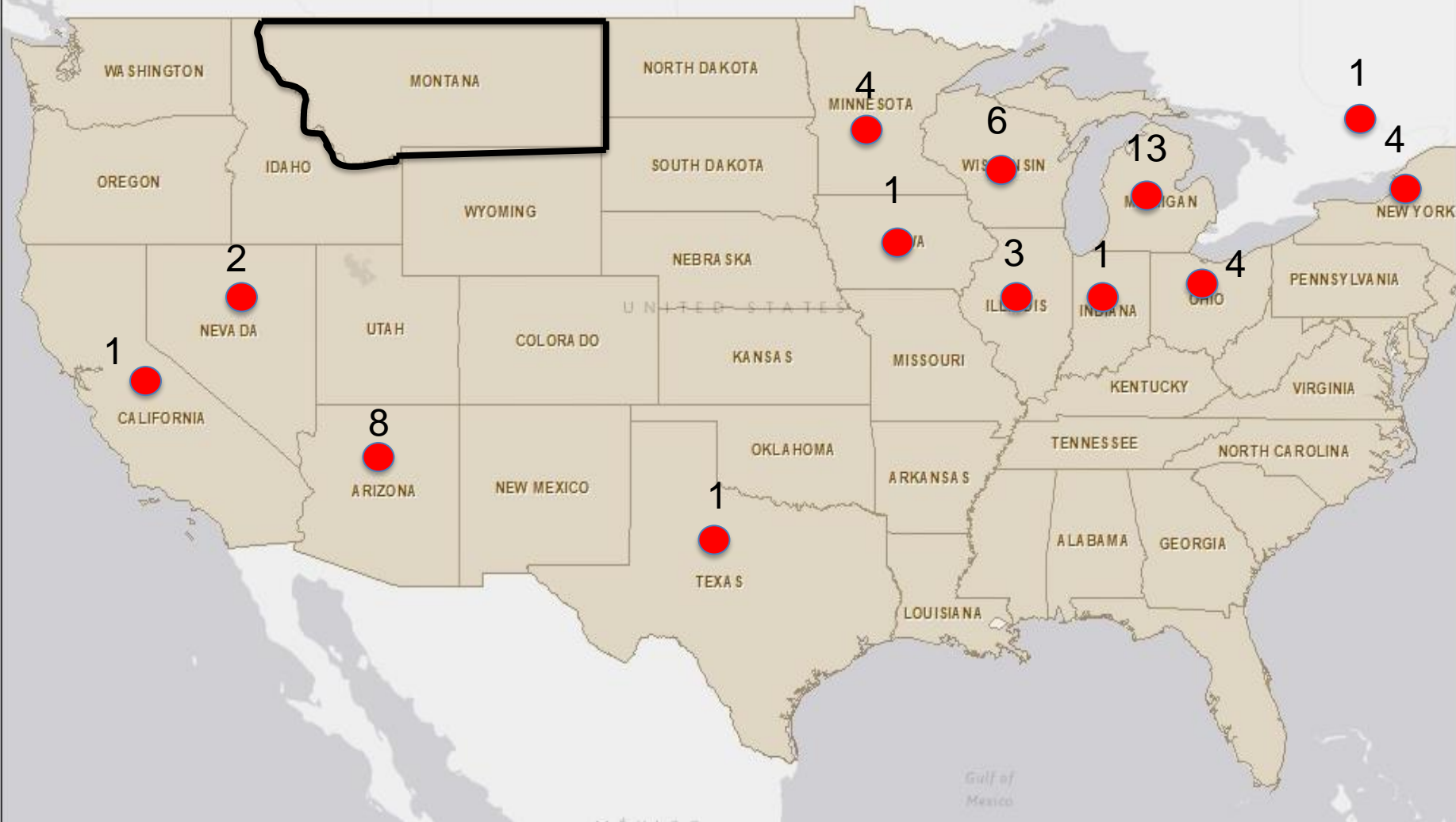


Vessels Transporting Mussels from Eastern Waters

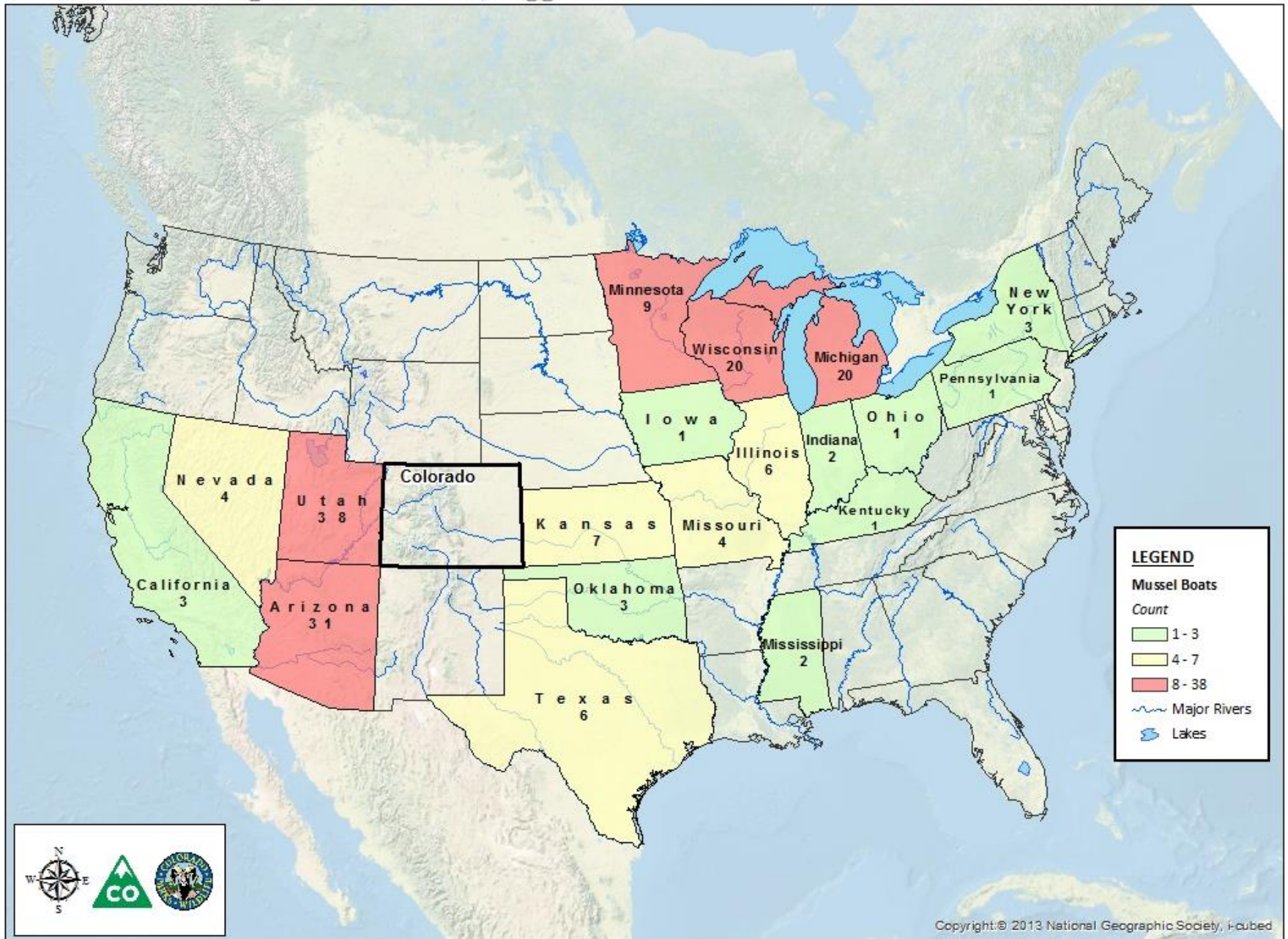
- Around 50 a year west-wide.
- Montana Eastern Interceptions:
 - 2017: 15
 - 2018: 11
 - 2019: 11
- Most moved from dry dock.
- Several every year recently removed from the water.



Zebra/Quagga Mussel Vessel Origin Montana 2017 to 2019



Boat Origin for Zebra & Quagga Mussel Positive Interdictions in Colorado



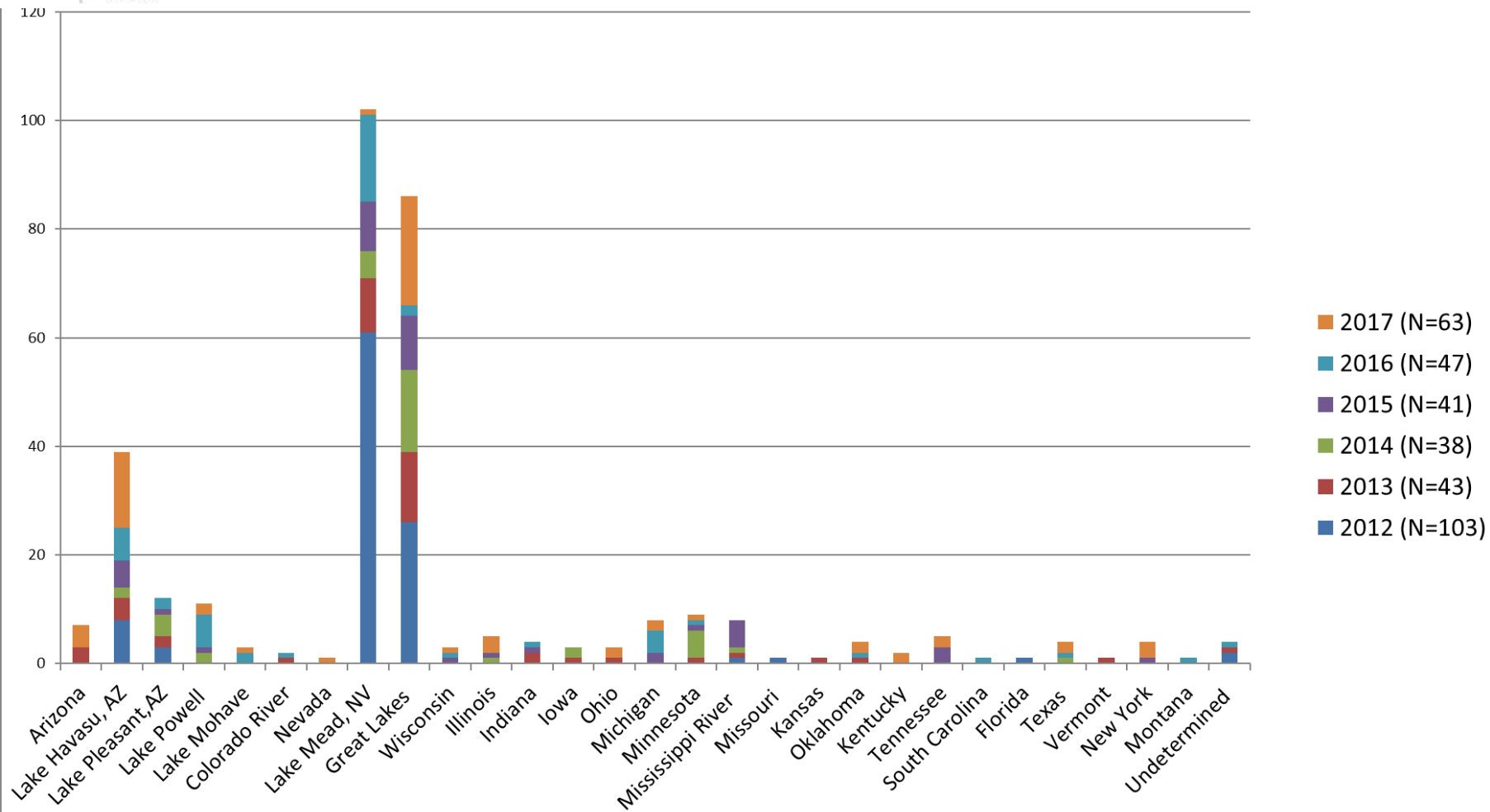


180

Mussel Intercepted Vessels by Source

(OR, ID, MT, WA, WY)

2012-2017



Requirements for Watercraft Moving West:

- Inspection before launch required in MT and WY
- All western states have clean, drained and dry requirements.
- Possession of dead mussels illegal in some states.
- Possession of other AIS prohibited.
- Boats may be inspected multiple times while traveling west.
- Contact destination state to arrange inspection.



Used Boats and Commercial Haulers Moving Mussels

- Most are recently purchased. (60 to 90%)
 - Craigslist or brokers.
- Many are commercially transported. (70 to 90%)
- Many have been “washed”.
- Some have been out of the water for a day or two.
- Used docks and boat lifts.



Western Support

- Western Regional Panel
- Columbia River Basin Team
- Pacific Northwest Economic Region (PNWER)
- Western Governor's Association



Need Your Help

- Seeking ideas and opportunities to address this issue.
- Targeted outreach.
 - Craigslist and brokers.
 - Commercial haulers.
- Promote clean boat sales and transport.





CleanDrainDryMT.gov

