

# Grass Carp Actions in Ohio

To Conserve and improve Fish and Wildlife resources and their Habitats for sustainable use and appreciation by all



John Navarro  
Aquatic Invasive Species Program Administrator

# **2018 Grass Carp Planned Action**

# It Pays to Know ICS Roles



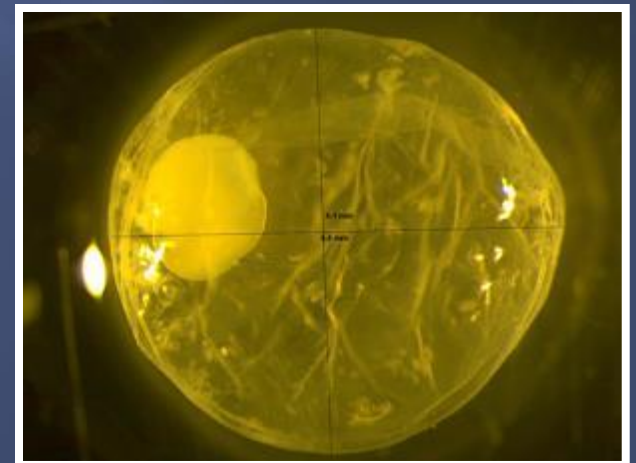


# Grass Carp Focus Area



# 2018 Ohio Targeted Response Action

- Locations were informed by telemetry and egg sampling
- Timing overlapped with suitable spawning conditions
- Increased capacity through Mutual Aid Agreement for AIS Response



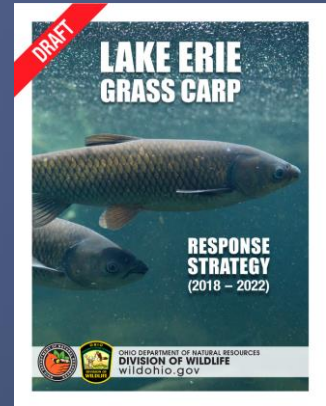


# 2018 Ohio Targeted Response

- High effort and participation
  - 63.7hrs TN; 70.5hrs EF
  - 71 people
- 31 captured – 21 removed
  - 28 Sandusky (1 recap)
  - 3 Maumee
- Tandem electrofishing was most effective
  - Captured 29 of 31 fish



# 5-Year Response Strategy



Prevent diploid Grass Carp from becoming further established in the Lake Erie basin and as the science develops, eradicate them from Lake Erie.

## Outcome 1: Prevent Further Introduction / Expansion

- Objective 1.1 – Secure Aquaculture (Triploid) Supply Chain
- Objective 1.2 – Insure Secure Bait Trade
- Objective 1.3 – Close Knowledge Gaps / Understand Life History

## Outcome 2: Implement Strategies to Manage Grass Carp Populations

- Objective 2.1 – Removal & Prevention
- Objective 2.2 – Engage Commercial Netters
- Objective 2.3 – Evaluate Use of Innovative Control Technologies

# Enforcement and Outreach



# AIS Risk Assessment Injurious List

## Classification Process

- Listed injurious by USFWS
- Categorized as high risk by the USFWS
- Determined high risk that by U.S. state or Canadian province
- Determined high risk by the Division of Wildlife

## Risk Assessment Procedure

- High - adverse impacts elsewhere and high climate match
- Low - not invasive elsewhere and low climate match
- Uncertain - information insufficient, need more data

## Responsibility for Conducting Risk Assessment

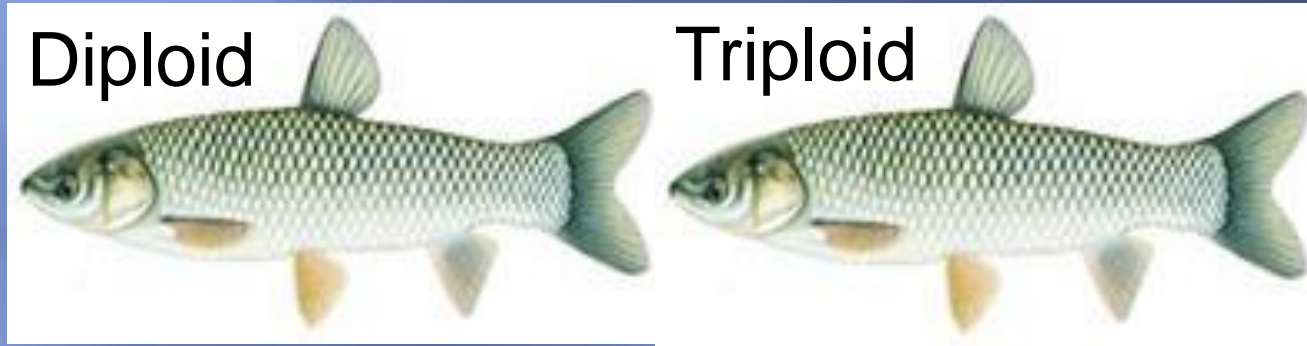
- USFWS
- Division of Wildlife or a designated contractor
- Entity requesting to possess





# Operation “Laundering”

## Grass Carp Supply Chain



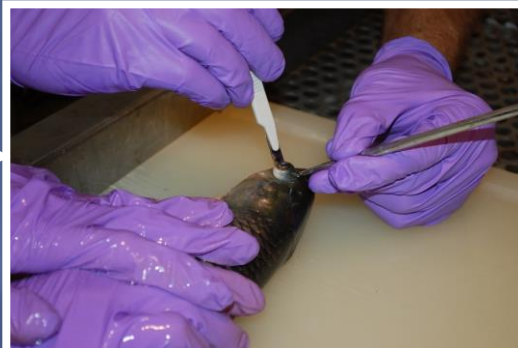
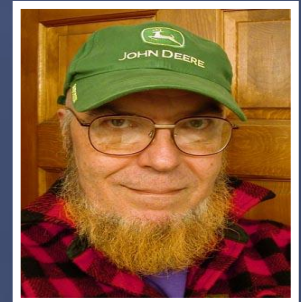
+



+



=





# Live Bait and Angling Bait Shop Surveillance



# Live Bait and Angling

## Quick ID Guide for Bait

OHIO DEPARTMENT OF NATURAL RESOURCES  
DIVISION OF WILDLIFE

### Quick ID Features for Baitfish

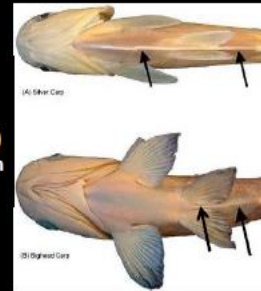
DEALER EDITION

PUB 5487-D



#### Silver Carp, Bighead Carp and Gizzard Shad

**Silver Carp**  
(Invasive)  
No scales on keel.



**Gizzard Shad**  
(Native)

Rounded snout,  
conspicuous  
dark spot  
behind head,  
keel with saw-  
like scales



Keel with saw-like scales

John Lyons



# Live Bait and Angling Outreach

**WHY do WE hunt?**



**For sustenance and pleasure**

**TRASH UNUSED BAIT.**

**HELP STOP INVASIVE SPECIES**

Great Lakes RESTORATION

CLEAN DRAIN DRY

U.S. FOREST SERVICE

www.CleanDrainDry.org

**DEALERS WANTED!**

**DOUBLE GRAVITY**

**RUGGED • DURABLE • M... THEY'RE RACCOON WILDERNESS**

It's A BUCK M...

**ORDER 1**

**407.620...**

**SO SATISFIED THEY ORDER**

Jo R. of FL: Bought 2, Now Owns 19  
Bobby B. of GA: Bought 2, Now Owns 8  
Charlie D. of LA: Bought 2, Now Owns 6  
Richard H. of OH: Bought 2, Now Owns 7  
Arthur L. of LA: Bought 1, Now Owns 5

**TRASH UNUSED BAIT.**

**MINNOWS & WORMS STOP INVASIVE SPECIES**

www.CleanDrainDry.org

LAMAR

**TRASH UNUSED BAIT.**

**HELP STOP INVASIVE SPECIES**

OHIO DEPARTMENT OF WILDLIFE

CLEAN DRAIN DRY

U.S. FOREST SERVICE

www.CleanDrainDry.org



# Ohio Field Guide to Aquatic Invasive Species

