

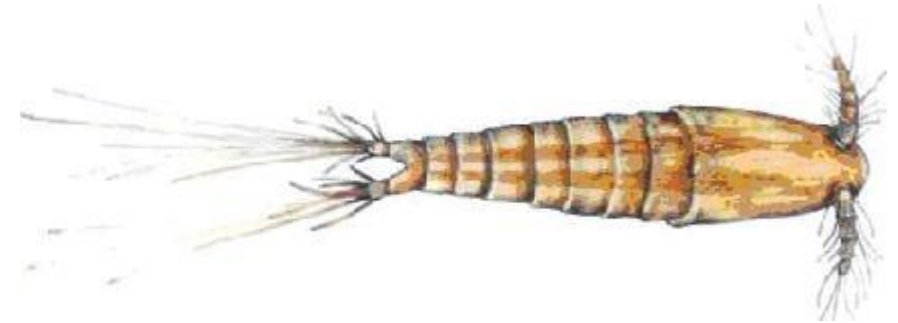
GLANSIS Update

Great Lakes Panel on ANS

October 26, 2021

“Retired and Reclassified” Species

- Removing from the Watchlist
 - *Ectinosoma abrau*
 - *Podonevadne trigona ovum*
 - *Paramysis (Metamysis) ullskyi*



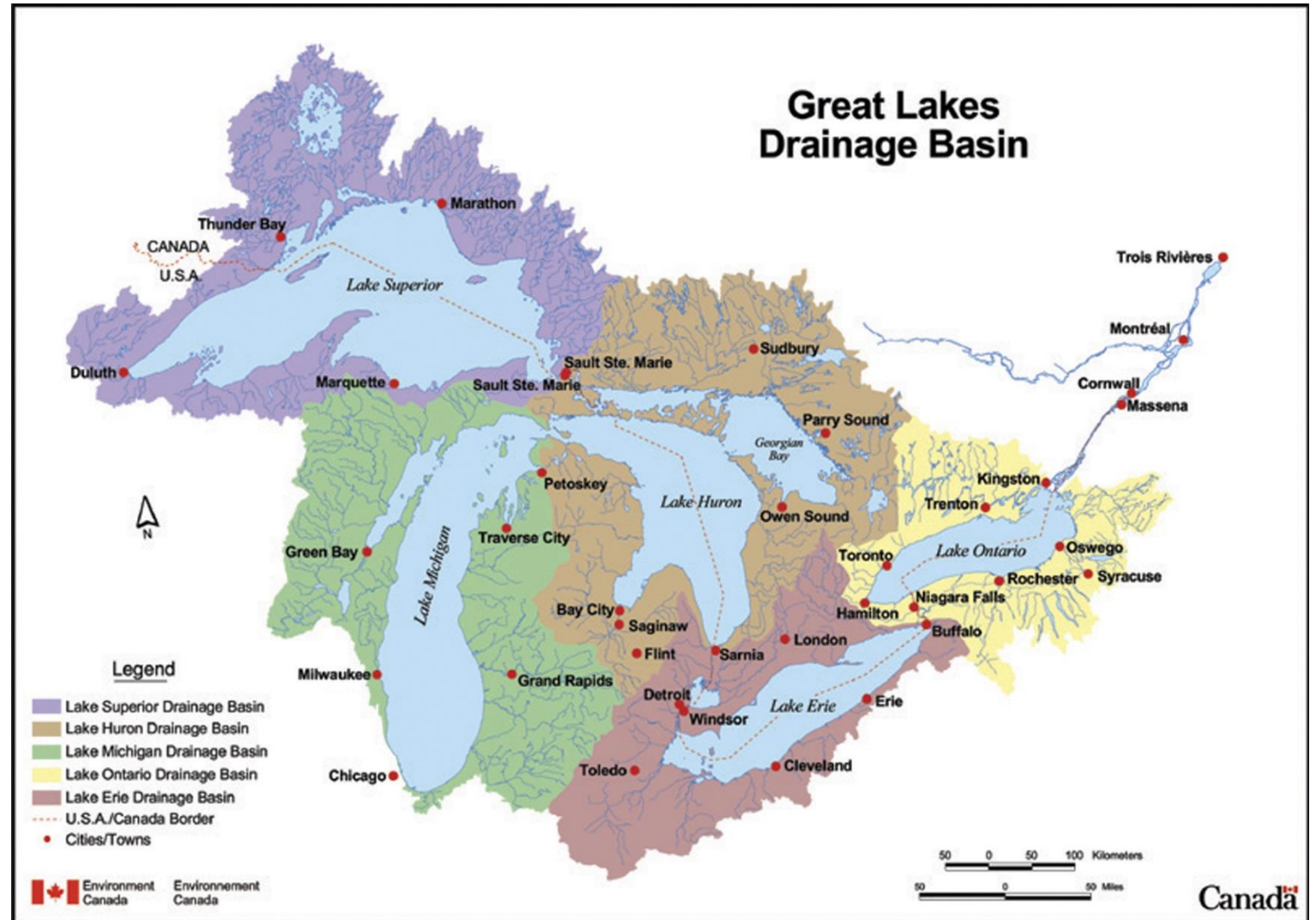
The assessments for these species which led to their removal from the lists will be placed in the NOAA TM-series and summarized in the Clearinghouse.

New Species

- New Nonindigenous
- New cryptogenic/Range Expander
- New Watchlist

Canadian data

- We now have capacity to bulk-upload Canadian data into the database.
Please send ALL distribution data for established species - current and historic - from the Canadian Great Lakes watershed.





Data download – via Map Explorer page

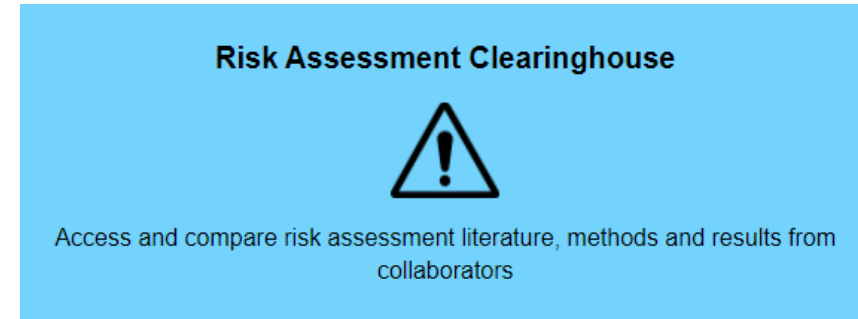
GLANSIS Database Download

Need more than 3 species? The entire current GLANSIS distribution data is updated weekly on Fridays to a text file. This dataset includes emergent plants, bacteria, viruses, and parasites.

[Download Data](#)

This data is formatted to Darwin core standard and automatically pushed by USGS weekly

Risk Assessment Clearinghouse



- MISAC Assessment
- MN Classification of Non-Native Species (Legislative)
- Canadian Ballast Risk Assessment

This brings the Clearinghouse (tier 3) to 4767 individual species assessments.

- **Suggestions welcome for additional assessments/methodologies.**

Adding Legislation to the RA Clearinghouse – Tier 2

Side-by-side comparison

Click the check box directly beneath the title of up to two risk assessments to compare them. Once you click a second, you will be directed to a table which will appear here.

Perform different comparison		
Title	MISAC (Minnesota Invasive Species Advisory Council)	MN Classification of Nonnative Species
Citation	Citation: Minnesota Invasive Species Advisory Council. 2020. Minnesota Invasive Species Advisory Council Ratings of Invasive Species of Concern to Minnesota Link: https://static1.squarespace.com/static/57539006044262fce01261c5/t/5e5e6c755eb6fa4a91ec9549/1583246456744/MISAC+Species+List.pdf	Citation: MN Statute 84D.04 Link: https://www.revisor.mn.gov/statutes/cite/84D.04
Is arrival considered?	Yes	No
Is survival considered?	No	Yes
Is establishment considered?	Yes	Yes
Is spread considered?	Yes - Risk of Spread	Yes
Are ecological considered?	Yes - Ecological Impacts	"No, or only indirectly"
Are socioeconomic considered?	"Yes - Threat to human health, state economies, and state infrastructure"	Yes
Is manageability considered?	Yes - Management	Yes
Geographic scope	Minnesota	Minnesota
Taxonomic scope	All	"aquatic plants and wild animals, including subspecies, genotypes, cultivars, hybrids, or genera"
Type of assessment	Qualitative	Qualitative (Regulation)
Type of results	"Categorical (High, Moderate, Low, Unknown)"	"Categorical (Prohibited, Regulated, Unlisted Nonnative, Unregulated Nonnative)"
Review methods	Reviewed twice Internally	Commissioner of MN DNR

Adding Legislation to the RA Clearinghouse – Tier 3

Educator Needs Assessment



Video Series

- **GOAL: This video series aims to underscore the importance of past, present, and ongoing work related to invasive species in the Great Lakes.**
- **Capstone (1 minute):** Federal agencies are making a difference in the fight against invasive species in the Great Lakes through monitoring, control technologies, and mitigation.
- **[Ballast Water](#) (<3 minutes):** Identifying and halting major invasion vectors can be more effective than controlling individual species.
- ***Dreissenid mussels* (<3 minutes):** Sometimes, eradication isn't an option, and control methods must focus on small-scale maintenance to keep necessary activities/infrastructure running.
- ***Sea lamprey* (<3 minutes):** Even long-established invasive species can be controlled, if not eradicated, and constant funding and vigilance are still necessary.
- ***Invasive carp* (<3 minutes):** When we know a species is an imminent invasion threat, research, monitoring, and advance mitigation efforts are crucial.

IF you do key work in these areas and want to provide input to the storyboard process, please let us know!



JASMS 2022

GRAND RAPIDS, MICHIGAN, MAY 14 - 20

- Understanding and Predicting Distribution and Impacts of Aquatic Invasive Species – Rochelle Sturtevant, Doran Mason and Wes Daniel
- What's in a (Species) Name? Language and Metaphor in Aquatic Ecology – El Lower