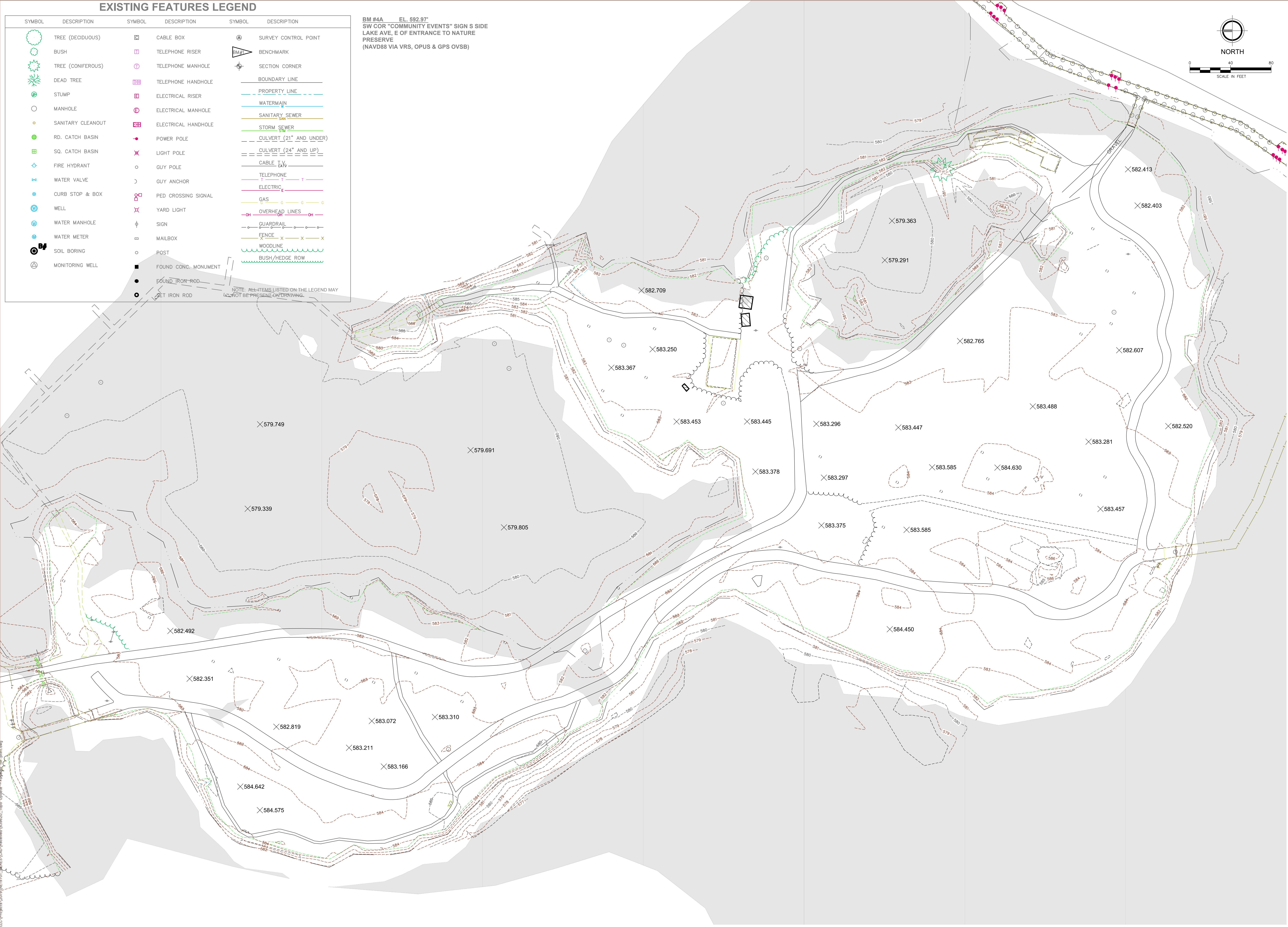
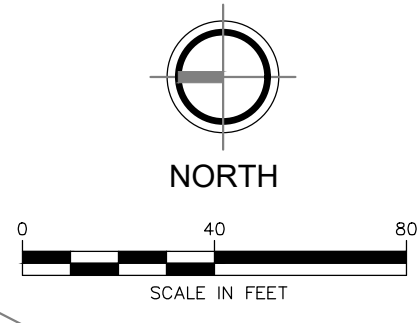


EXISTING FEATURES LEGEND

SYMBOL	DESCRIPTION	SYMBOL	DESCRIPTION	SYMBOL	DESCRIPTION
	TREE (DECIDUOUS)		CABLE BOX		SURVEY CONTROL POINT
	BUSH		TELEPHONE RISER		BENCHMARK
	TREE (CONIFEROUS)		TELEPHONE MANHOLE		SECTION CORNER
	DEAD TREE		TELEPHONE HANDHOLE		BOUNDARY LINE
	STUMP		ELECTRICAL RISER		PROPERTY LINE
	MANHOLE		ELECTRICAL MANHOLE		WATERMAIN
	SANITARY CLEANOUT		ELECTRICAL HANDHOLE		SANITARY SEWER
	RD. CATCH BASIN		POWER POLE		STORM SEWER
	SQ. CATCH BASIN		LIGHT POLE		CULVERT (21" AND UNDER)
	FIRE HYDRANT		GUY POLE		CULVERT (24" AND UP)
	WATER VALVE		GUY ANCHOR		CABLE
	CURB STOP & BOX		PED CROSSING SIGNAL		TELEPHONE
	WELL		YARD LIGHT		ELECTRIC
	WATER MANHOLE		SIGN		GAS
	WATER METER		MAILBOX		OVERHEAD LINES
	SOIL BORING		POST		GUARDRAIL
	MONITORING WELL		FOUND CONC. MONUMENT		FENCE
			FOUND IRON ROD		WOODLINE
			SET IRON ROD		BUSH/HEDGE ROW

BM #4A EL. 592.97'
 SW COR "COMMUNITY EVENTS" SIGN S SIDE
 LAKE AVE, E OF ENTRANCE TO NATURE
 PRESERVE
 (NAVD88 VIA VRS, OPUS & GPS OVS)

NOTE: ALL ITEMS LISTED ON THE LEGEND MAY
 NOT BE PRESENT ON DRAWING.



FLEISCHMANN & WANDENBRINK
 DESIGN. BUILD. OPERATE.
 316 Morris Avenue, Suite 230
 Muskegon, MI 49440
 P: 231.726.1000
 F: 231.726.2200

REVISION:
GEI
 NORTH MUSKEGON, MUSKEGON COUNTY, MICHIGAN
 MUSKEGON LAKE NATURE PRESERVE
TOPOGRAPHIC SURVEY

DESIGN TEAM:
 J.R. SAID, MREG
 CHECK BY:
 839620_Topo Update - altered
 for print
 wslw

MAY 2019
 FVJ PROJECT NO.
 839620