



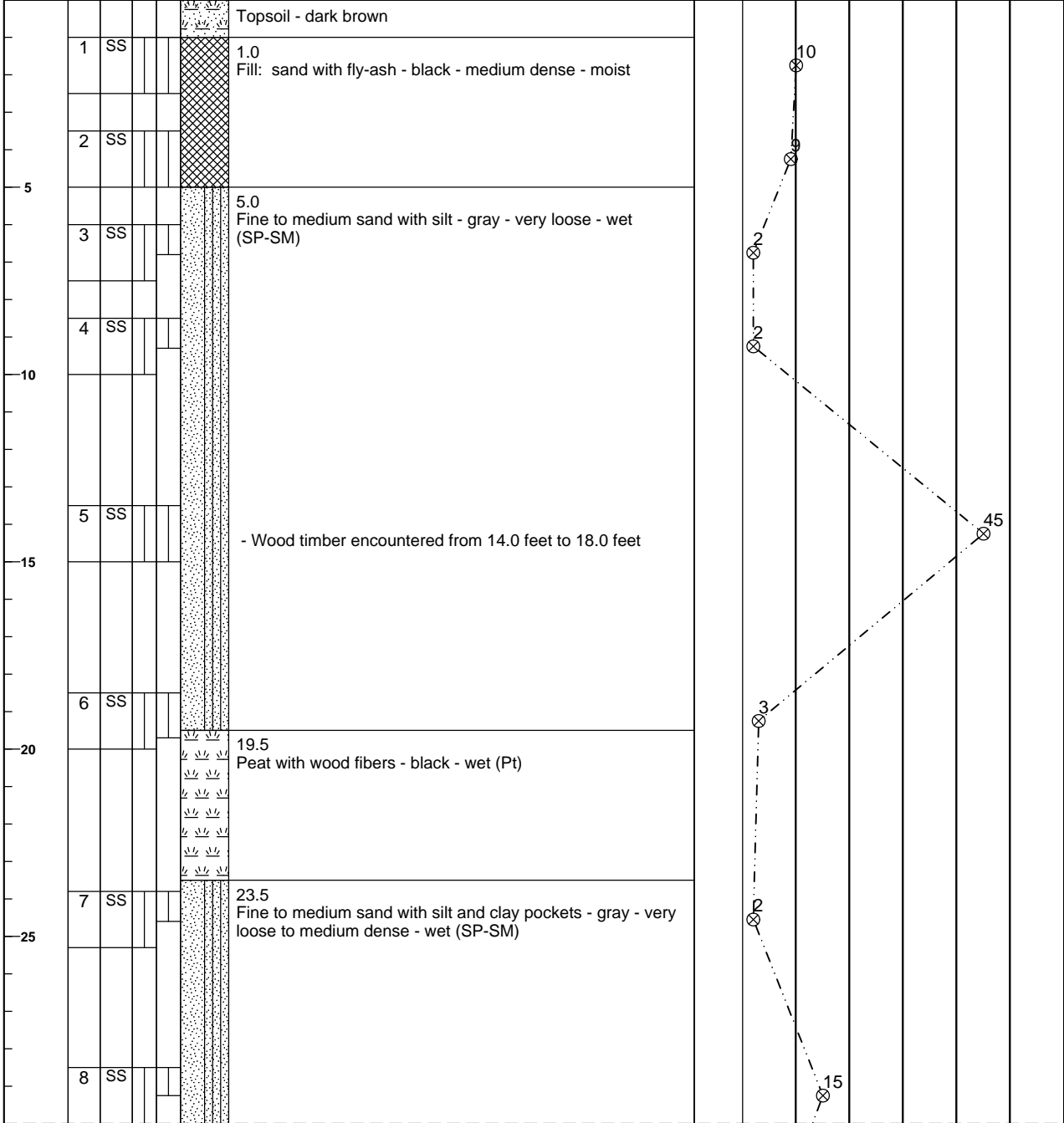
CLIENT:  
**WMSRDC**

PROJECT NAME:  
**Muskegon Lake - Veterans Park**

LOG OF BORING NUMBER **B-1**

ENGINEER  
**GEI Consultants of Michigan, P.C.**

DEPTH (FT) ELEVATION (FT)	SAMPLE NO.	SAMPLE TYPE	SAMPLE DISTANCE	RECOVERY	LOCATION: Muskegon, Michigan	Dry Unit Weight	○ UNCONFINED COMPRESSIVE STRENGTH TONS/FT <sup>2</sup>				
					DESCRIPTION OF MATERIAL		1	2	3	4	5
							PLASTIC LIMIT (%)	WATER CONTENT (%)	LIQUID LIMIT (%)		
10	20	30	40	50							
SURFACE ELEVATION (ft)						Dry Unit Weight	⊗ STANDARD PENETRATION BLOWS/FT				
							10	20	30	40	50



The stratification lines represent the approximate boundary lines between soil types: in situ, the transition may be gradual.

WATER LEVEL: 6.0 ft. WS		BORING STARTED 11/7/2016		GEI OFFICE Allendale, MI	
		BORING COMPLETED 11/7/2016		ENTERED BY ABY	
				APPROVED BY HEP	
NORTHING		EASTING		GEI PROJECT NO. 1414800	
		RIG/FOREMAN CME 55/Stearns (Mike)		PAGE NO. 1 OF 2	

MIDWEST BORING LOG 1414800 WMSRDC MUSKEGON LAKE - HEP - MARQUETTE.GPJ GEI DATA TEMPLATE.GDT 11/22/16



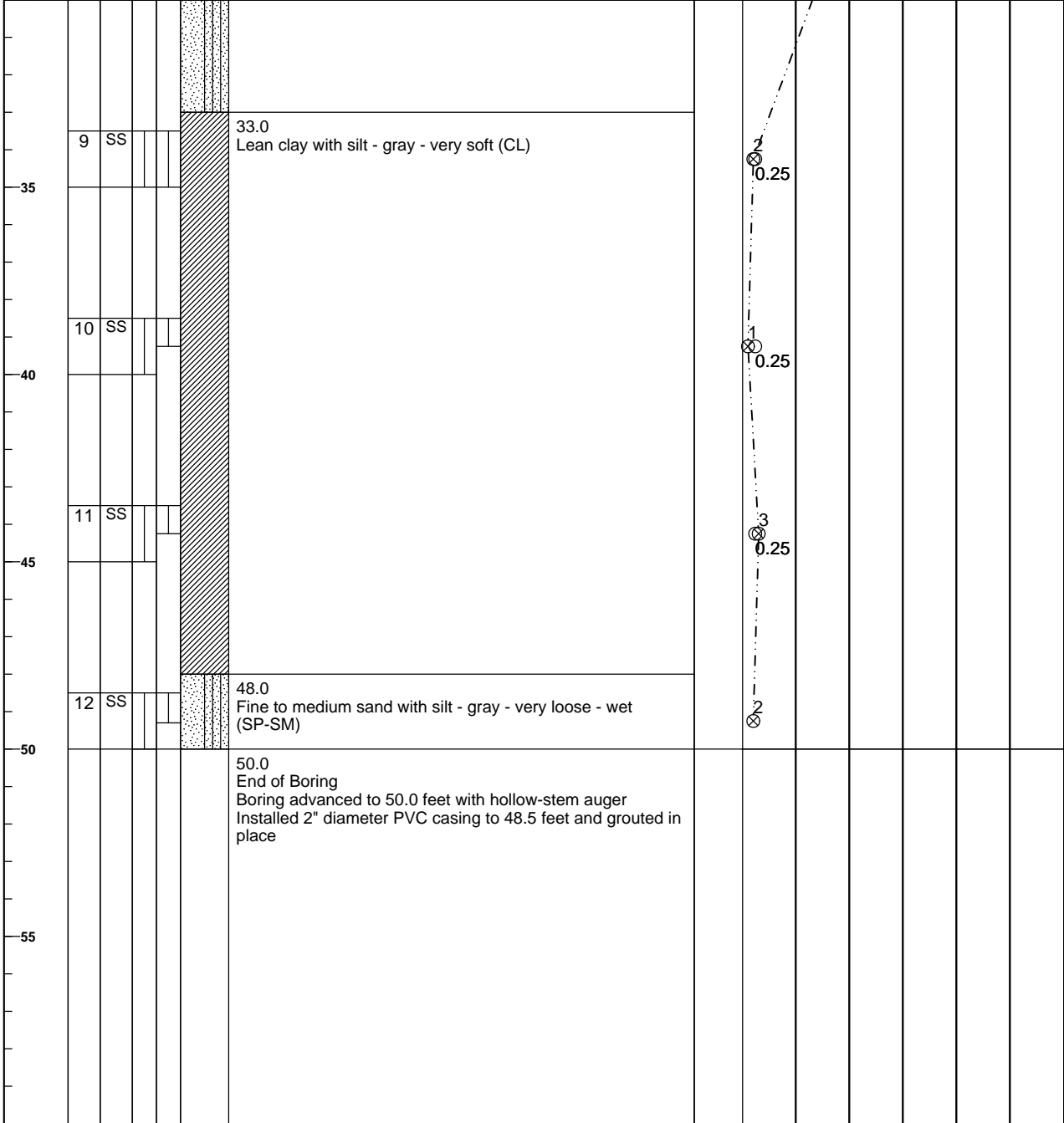
CLIENT:  
**WMSRDC**

LOG OF BORING NUMBER **B-1**

PROJECT NAME:  
**Muskegon Lake - Veterans Park**

ENGINEER  
**GEI Consultants of Michigan, P.C.**

DEPTH (FT) ELEVATION (FT)	SAMPLE NO.	SAMPLE TYPE	SAMPLE DISTANCE	RECOVERY	LOCATION: Muskegon, Michigan	Dry Unit Weight	○ UNCONFINED COMPRESSIVE STRENGTH TONS/FT <sup>2</sup>					
					DESCRIPTION OF MATERIAL		1	2	3	4	5	
							PLASTIC LIMIT (%)	WATER CONTENT (%)	LIQUID LIMIT (%)			
×	—	●	△									
					SURFACE ELEVATION (ft)		⊗ STANDARD PENETRATION BLOWS/FT					
							10	20	30	40	50	60



The stratification lines represent the approximate boundary lines between soil types: in situ, the transition may be gradual.

WATER LEVEL: 6.0 ft. WS	BORING STARTED 11/7/2016	GEI OFFICE Allendale, MI	
	BORING COMPLETED 11/7/2016	ENTERED BY ABY	APPROVED BY HEP
NORTHING	EASTING	RIG/FOREMAN CME 55/Stearns (Mike)	GEI PROJECT NO. 1414800
		PAGE NO. 2 OF 2	

MIDWEST BORING LOG 1414800 WMSRDC MUSKEGON LAKE - HEP - MARQUETTE.GPJ GEI DATA TEMPLATE.GDT 11/22/16



CLIENT:  
**WMSRDC**

LOG OF BORING NUMBER **B-2**

PROJECT NAME:  
**Muskegon Lake - Veterans Park**

ENGINEER  
**GEI Consultants of Michigan, P.C.**

DEPTH (FT) ELEVATION (FT)	SAMPLE NO.	SAMPLE TYPE	SAMPLE DISTANCE	RECOVERY	LOCATION: Muskegon, Michigan	Dry Unit Weight	○ UNCONFINED COMPRESSIVE STRENGTH TONS/FT <sup>2</sup>							
					DESCRIPTION OF MATERIAL		1	2	3	4	5			
							PLASTIC LIMIT (%)	WATER CONTENT (%)	LIQUID LIMIT (%)					
		10	20	30	40	50								
							⊗ STANDARD PENETRATION BLOWS/FT							
							10	20	30	40	50	60		

5					Topsoil - dark brown									
	1	SS			1.0 Fine to medium sand with silt - gray - very loose to loose - moist (SP-SM)									
	2	SS			- small roots at 3.5 feet - wet from 4.0 feet to 20.0 feet									
	3	SS												
	4	SS												
	5	SS			- dark brown clay pockets from 13.5 feet to 20.0 feet									
	6	SS												
					20.0 End of Boring Boring advanced to 20.0 feet with hollow-stem auger Boring backfilled with soil cuttings									

The stratification lines represent the approximate boundary lines between soil types: in situ, the transition may be gradual.

WATER LEVEL: 4.0 ft. WS		BORING STARTED 11/7/2016		GEI OFFICE Allendale, MI	
		BORING COMPLETED 11/7/2016		ENTERED BY ABY	
				APPROVED BY HEP	
NORTHING		EASTING		GEI PROJECT NO. 1414800	
		RIG/FOREMAN CME 55/Stearns (Mike)		PAGE NO. 1 OF 1	

MIDWEST BORING LOG 1414800 WMSRDC MUSKEGON LAKE - HEP - MARQUETTE.GPJ GEI DATA TEMPLATE.GDT 11/22/16