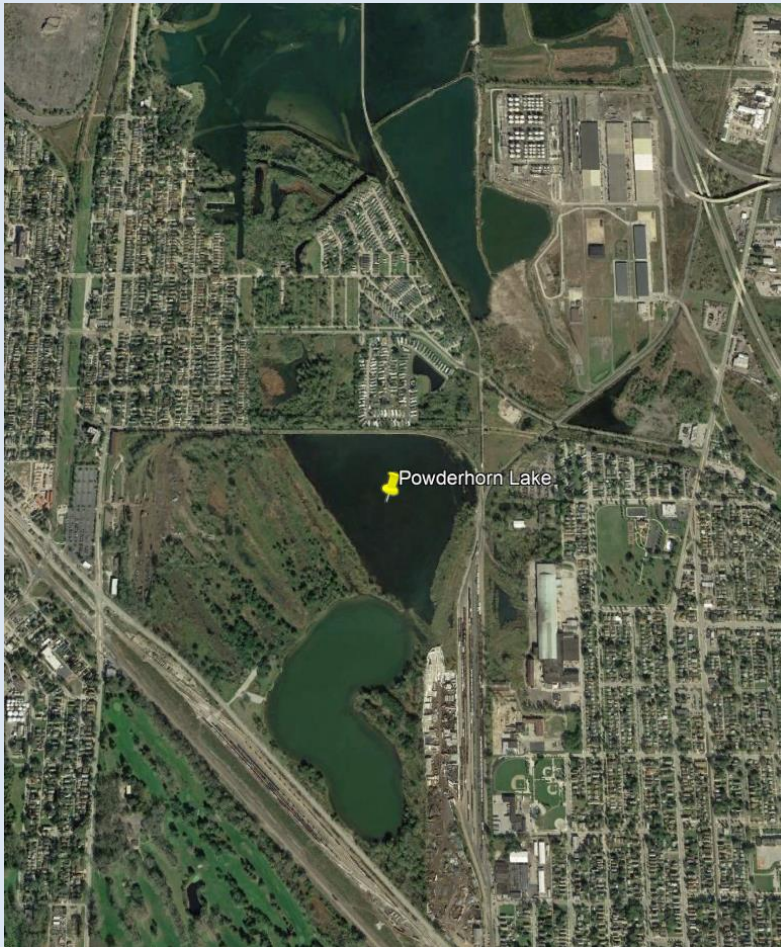




Powderhorn Lake Habitat Restoration

The **Powderhorn Lake** habitat restoration project will improve habitat for fish and wildlife in northeast Illinois by reestablishing fish passage to Wolf Lake and Lake Michigan.



Project location in southeast Chicago

Project Highlights

Reestablish hydrologic connectivity with Wolf Lake to the north and ultimately Lake Michigan

Reestablish emergent marsh habitat and shallow open water areas

Install water control structure to allow control of flooding

Conduct Pre- and post-restoration monitoring

Funding is provided by the Great Lakes Restoration Initiative (GLRI) and U.S. Environmental Protection Agency through the National Oceanic and Atmospheric Administration (NOAA)/Great Lakes Commission (GLC) Regional Partnership

Audubon Great Lakes is the local implementation partner

Environmental Benefits

Create fish and wildlife habitat

Improve hydrologic connectivity

Economic Benefits

Improve sport fishing

Improve tourism

Enhance recreation

Community Benefits

Improve fishing access

Control flooding

Improve birding

Powderhorn Lake Background



Aerial photo of Powderhorn Lake (Photo provided by Audubon Great Lakes)

Powderhorn Lake is a 50-acre freshwater lake with an adjacent 55-acre shallow pool, owned by the Forest Preserves of Cook County (FPCC), and located in Chicago, Illinois. To the north lies Wolf Lake, a 950-acre freshwater lake, owned by the Illinois Department of Natural Resources (IDNR). Powderhorn Lake is embedded within one of the few remaining examples of the dune and swale topography that once characterized the Calumet Region along the south shore of Lake Michigan. Once connected as part of a large collection of marshes, lakes, and rivers adjacent to Lake Michigan, these lakes have been isolated by urban and industrial development.

Despite their isolation, populations of aquatic species characteristic of the Great Lakes basin persist. However, the impacts of isolation threaten their future survival. Currently, Powderhorn Lake remains separated from its northern neighbor, Wolf Lake, which connects to Lake Michigan through the Indian Creek pathway to the Calumet River. The Great Lakes Commission, along with Audubon Great Lakes, is working to reconnect these lakes to allow for fish passage into and from the greater Lake Michigan ecosystem, and to allow for a water control structure to reestablish emergent marsh habitat and open water areas within Powderhorn Lake.

Project Progress

The engineering and design for this project has been completed and is being managed locally by Audubon Great Lakes. Construction is currently wrapping up and will be followed by post-monitoring in spring 2023.

Funding and Partners

Approximately \$1 million is available for this project through the GLRI, a regional program that is supporting implementation of a comprehensive restoration plan for the Great Lakes. The project funding comes from NOAA through a Regional Partnership with the Great Lakes Commission. The project is being managed locally by Audubon Great Lakes in collaboration with Forest Preserves of Cook County.

For More Information

Eric Ellis, Habitat Restoration Project Manager
Great Lakes Commission, 734-396-6089, eellis@glc.org

Andy Hinickle, Senior Manager, Wetland Conservation
Audubon Great Lakes
Andrew.Hinickle@audubon.org

