



Great Lakes Green Infrastructure Champions Program

KNOWLEDGE TRANSFER WORKSHOP – GARY, IN
JUNE 20, 2019



Fred A. and Barbara M.
Erb Family Foundation

Great Lakes Green Infrastructure Champions – overview from pilot program to today

- Purpose: catalyze adoption of green infrastructure (GI) practices and policies by providing mid-sized municipalities with resources they frequently lack
 - Funding: mini-grants
 - Capacity building: mentoring network, workshops
 - Address barriers: policy analysis (pilot only)



Flooding in Merrillville, Indiana
(Credit: Doug Lee, NWI Times)

Mini-Grant Program

- U.S. or Canadian municipalities within the binational Great Lakes
- Demonstrated commitment to participate as Emerging Champion in the Mentoring Network as mentees and will benefit from being paired with a Pioneer Champion
- Projects that remove barriers and build capacity expanding GI implementation in their community/sphere of influence

➤ *Want to have lasting impact after grant funding ends*

Awarded Mini-Grants - \$60,000 USD

- **City of Dearborn** Sustainable Lawns 50/50 Cost-share Program
- Improving Green Infrastructure Policy & Planning in Ohio's Central Lake Erie Basin (**Chagrin River Watershed Partners**)
- Rainwater Rewards for **Michigan City, Indiana**
- LID School Installations and Stream of Dreams Project (**Upper Thames River Conservation Authority**)
- Prairie Treatment System Installation (**Oshkosh, WI**)



Upper Thames River Conservation Authority

City of Dearborn, MI

- \$6,000 awarded
- 14 rain gardens through 50-50 cost sharing program
- Public outreach and education

“this project has sparked new life within our Rain and Native Plant Garden, our classrooms and the community”

– Henry Ford College, cost share participant

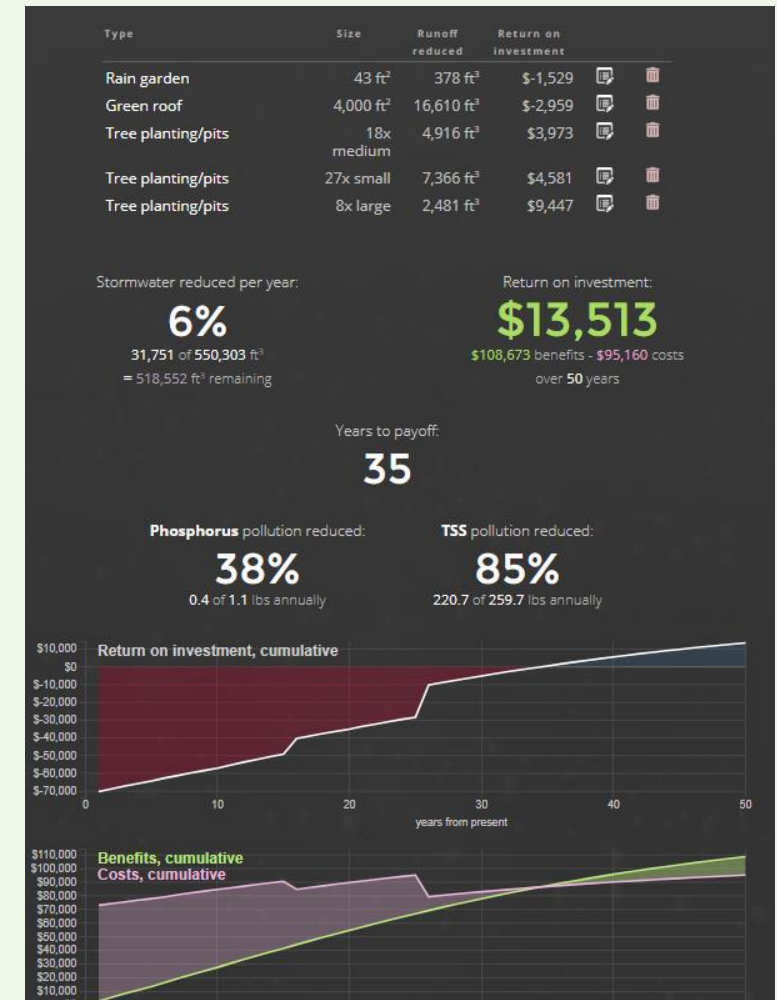


Chagrin River Watershed Partners (Ohio)

- \$12,000 awarded
- Mayfield Village:
 - Identify and address barriers in ordinances, plans, and policies
 - Encourage businesses to implement GI and use stormwater credit program
 - Assess feasibility of using cost-share funds to subsidize GI for homeowners
- City of Oberlin:
 - Identify and address barriers in ordinances, plans, and policies
 - Update comprehensive stormwater management regulations; adopt stormwater management ordinance
 - Develop incentive programs by establishing stormwater utility

Michigan City Sanitary District, IN

- \$12,000 awarded
- Rainwater Rewards calculator
 - GIS data updated and incorporated into calculator
 - Training on using calculator as decision-making support tool
 - Will help simplify process for future communities using Rainwater Rewards calculator



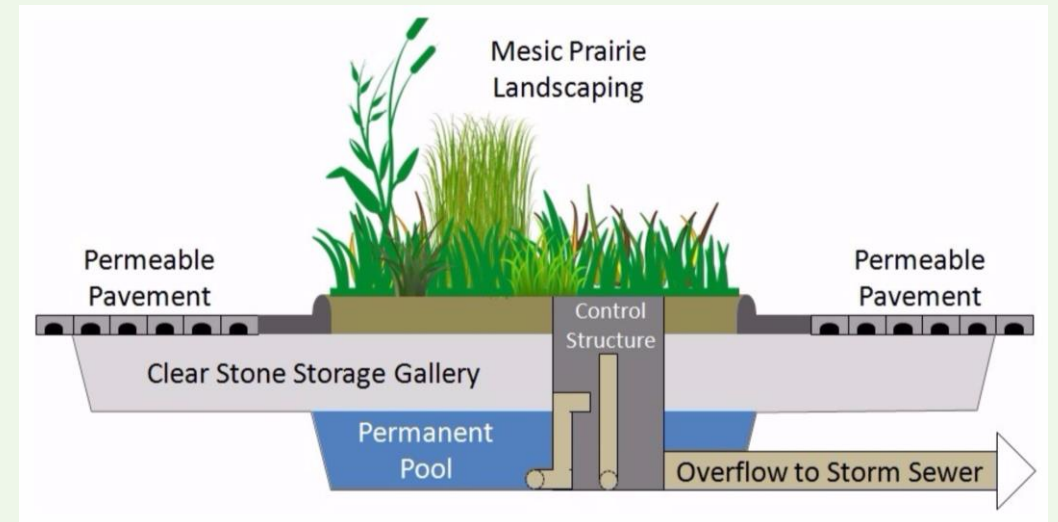
Upper Thames River Conservation Authority (Ontario)

- \$20,000 awarded
- Installations in schools-
 - Swale at Northbrae & Louise Arbor French Immersion Public Schools
 - Rain garden at Jeanne Sauve French Immersion Public School
- Stream of Dreams
- [Promotional video](#)



City of Oshkosh, Wisconsin

- Prairie Treatment System installation
- Design guidance documents developed



Phase 2 RFP: Addressing Champions feedback

Specifically funds community projects that focus on developing strategies to overcome key institutional barriers to implementing GI:

1. Local code/ordinance review and revision
e.g., audit to identify and revise codes to foster GI implementation
2. GI operations and maintenance training, procedures, and workforce development
e.g., O&M toolkit for GI with municipal training
3. Establishing sustainable funding streams
e.g., feasibility study for establishing stormwater utility
4. Other projects that address barriers to GI implementation
Creativity is encouraged!

Peer-to-peer mentoring network



Dequindre Cut, Detroit, MI

- Connects experienced green infrastructure practitioners with individuals that would like to bring green infrastructure to their communities
- Fosters the transfer of knowledge from experienced green infrastructure practitioners (***Pioneer Champions***) to a broader network of ***Emerging Champions*** who are eager to remove barriers and build capacity for GI but lack resources or experience

“The importance of a successful green infrastructure project to the goal of advancing green infrastructure in your community cannot be overstated. A failed project can have a crippling effect on subsequent green infrastructure initiatives”



Mentoring network - process

- Needs form for Emerging Champion
 - Skills form for Pioneer Champions
- } Used to match mentors with mentees, based on skills and expertise
- Additional mentor recruitment through Advisory Team
 - Mentoring agreement signed by both parties

Skills and Needs forms available at glc.org/work/champions or email

gichampions@glc.org

Quarterly webinars – engaging the network

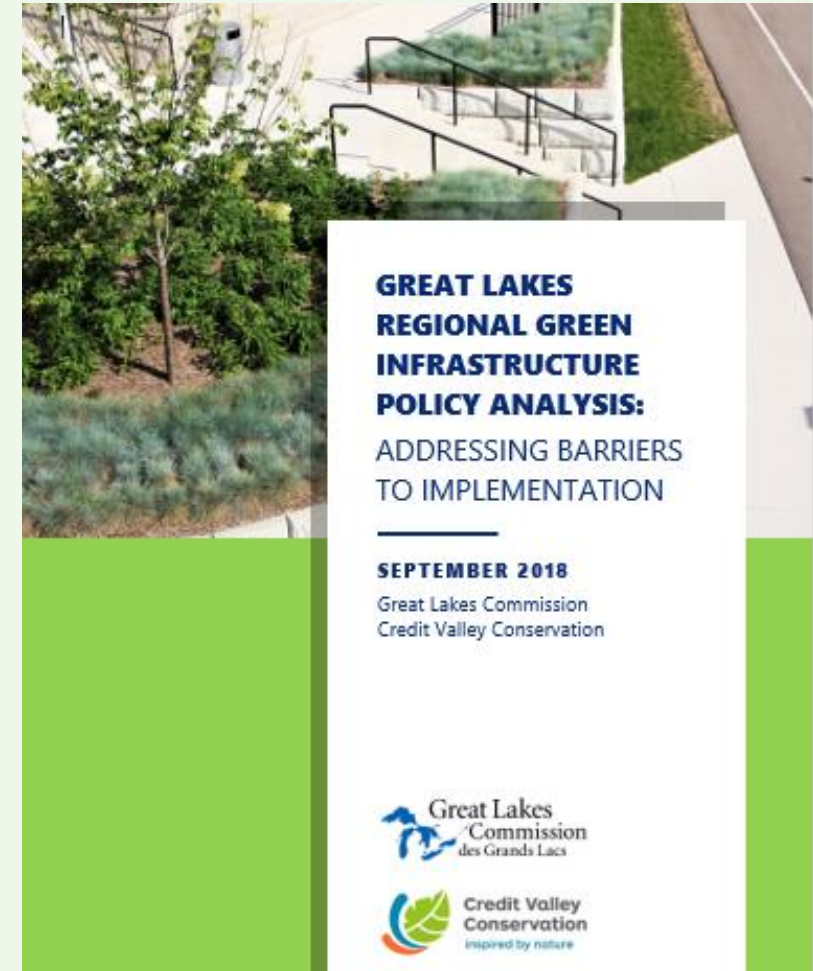
- Brings broader network together to connect Emerging and Pioneer Champions across the basin
- “Rose and Thorn” to identify status of Champions, seek input/resources from other network members



Upper Thames River Conservation Authority

Policy Analysis

- Targeted federal, state, and provincial policies that hinder or enable local GI adoption
- Pilot phase included research, report preparation, and outreach
 - Not formally included in Phase 2



Summary of U.S. State Recommendations

- Require consideration of GI to meet NPDES requirements
- Establish performance-based standards
- Dedicate funding and explicitly allow municipalities to establish stormwater utilities and/or levy fees



Memorial Park, Sturgis, MI
(Credit: FTCH)



Green Infrastructure Champions

www.glc.org/work/champions

Email: gichampions@glc.org

